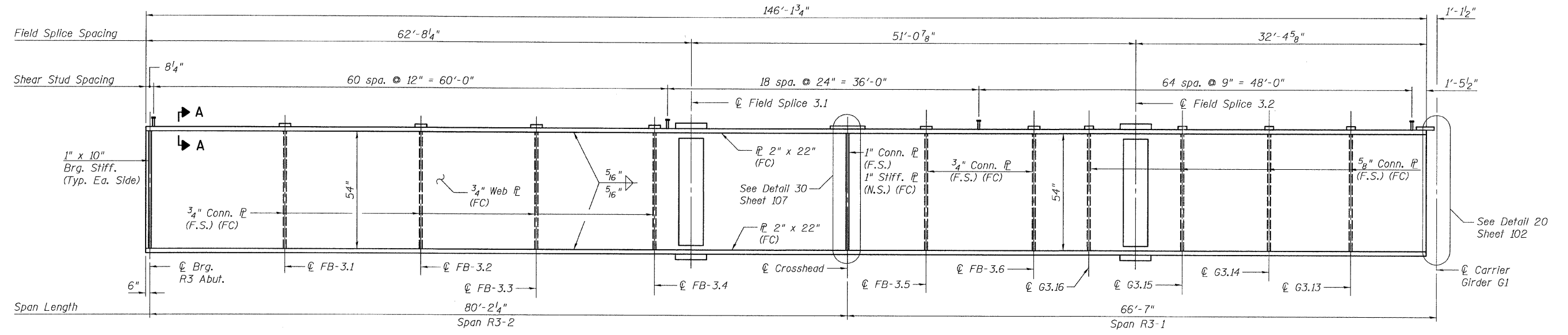
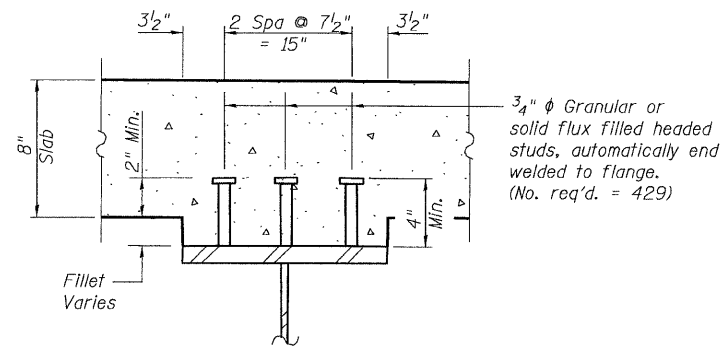


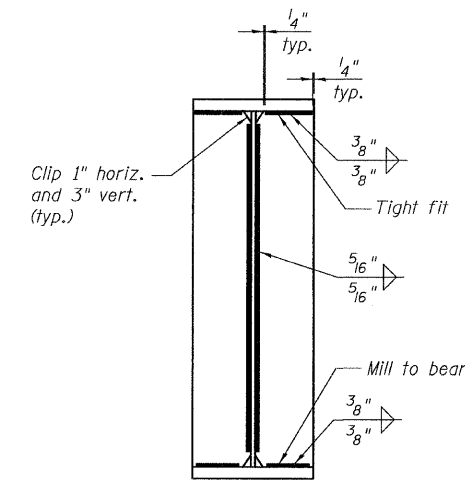
STATE OF ILLINOIS  
DEPARTMENT OF TRANSPORTATION



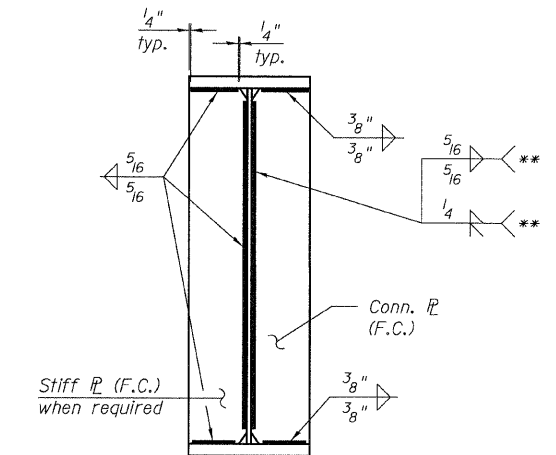
**GIRDER ELEVATION - G3.12**  
(Looking South)



**SECTION A-A**  
(Not in contract)



**BEARING STIFFENER**



\*\* Weld type based on angle between web and connection plate where angles warrant combination of fillet and groove welds. Fillet weld is acute angle and groove weld is obtuse angle.

**TYPICAL CONNECTION  
PLATE DETAIL**

**NOTES:**

1. All steel shown on this sheet shall be Conform to the requirements of AASHTO M270 GR 50.
2. F.C. denotes Fracture Critical Material, AASHTO Zone II.
3. For Field Splice details, See Sheet 111.

**GIRDER ELEVATIONS 3  
RAMP 3 FLARE  
STRUCTURE NO. 016-0724**

<b>TYLIN INTERNATIONAL</b>	DESIGNED - JPN	REVISIONS		SHEET NO. 98	F.A.I. RTE.	SECTION	COUNTY	TOTAL SHEETS	SHEET NO.	
	CHECKED - AMD,	NAME	DATE		137 SHEETS	55	0711.2R & 1011.1BR	COOK	200	128
	DRAWN - MAU				CONTRACT NO. 60L39					
	CHECKED - AMD,				FED. ROAD DIST. NO. 1   ILLINOIS   FED. AID PROJECT					
	DATE - 08/02/10									

p:\01345\beam\_and\_bearing\_fabrication\155f3f\framed\15.dgn 8/2/2010 2:07:12 PM