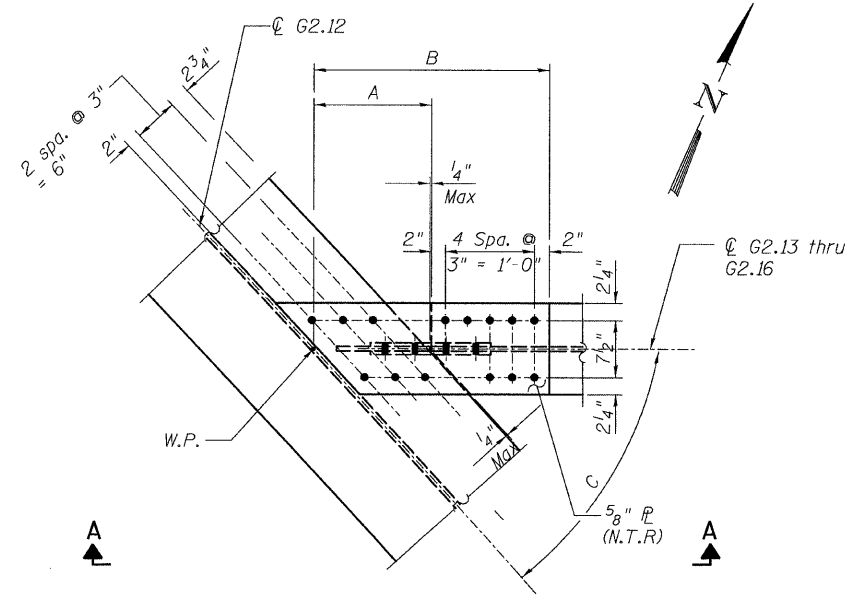
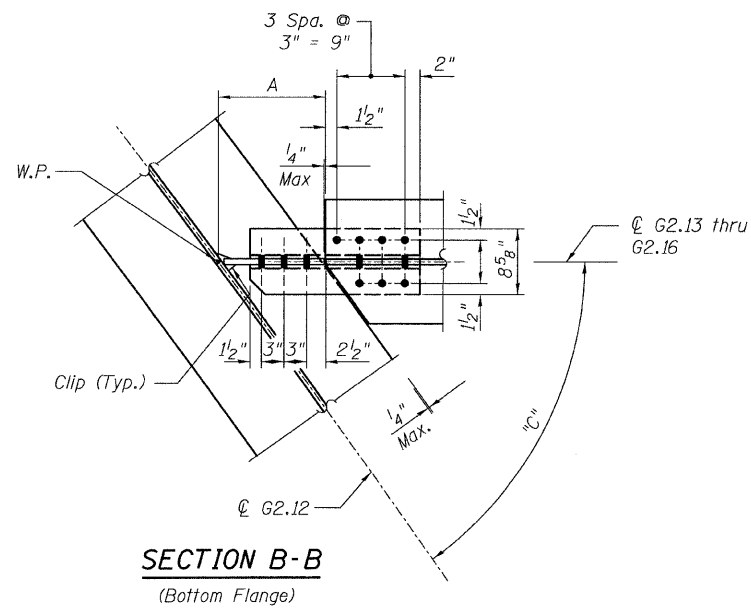


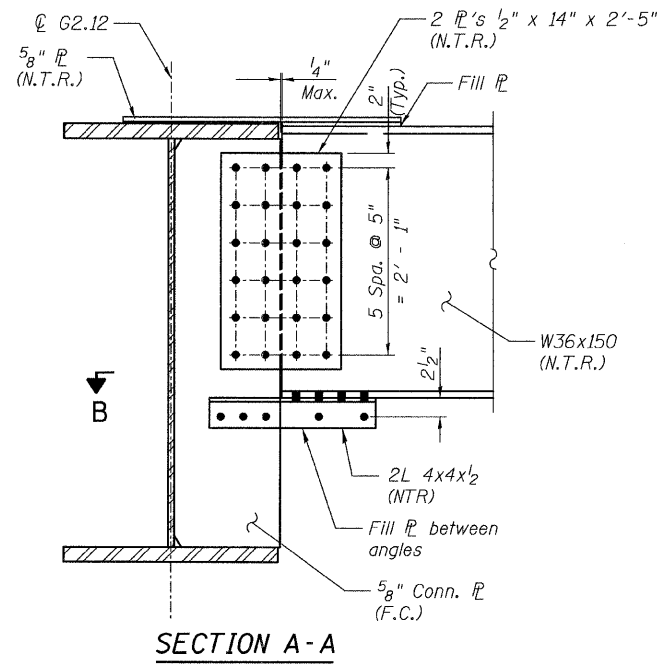
STATE OF ILLINOIS  
DEPARTMENT OF TRANSPORTATION



**DETAIL 25**  
(Top Flange)

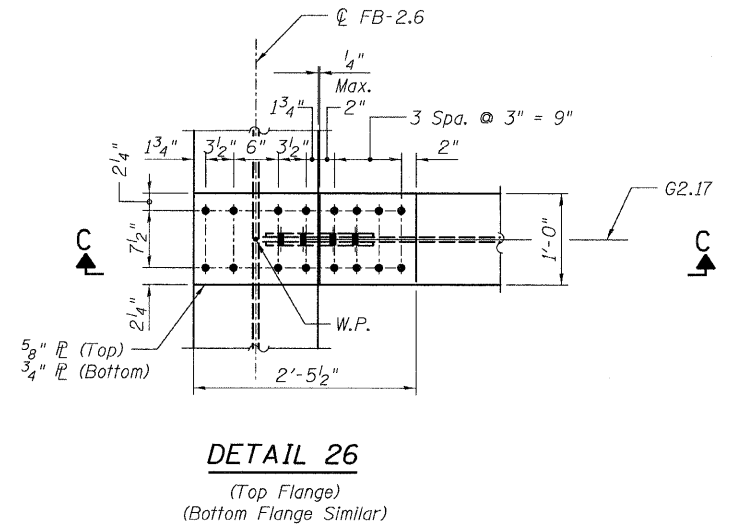


**SECTION B-B**  
(Bottom Flange)

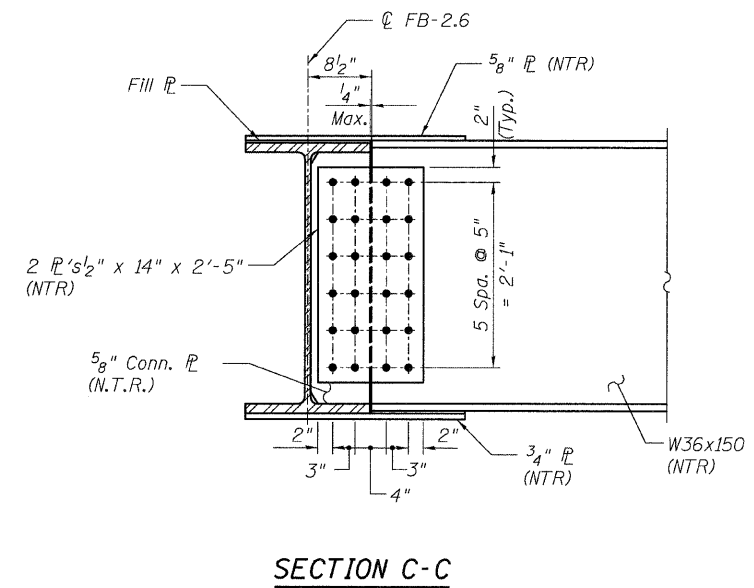


**SECTION A-A**

| Girder | Dimensions                          |                                      |           |
|--------|-------------------------------------|--------------------------------------|-----------|
|        | A                                   | B                                    | C         |
| G2.13  | 1'-3 <sup>5</sup> / <sub>8</sub> "  | 2'-7 <sup>3</sup> / <sub>4</sub> "   | 45°20'28" |
| G2.14  | 1'-4 <sup>9</sup> / <sub>16</sub> " | 2'-8 <sup>1</sup> / <sub>16</sub> "  | 42°16'0"  |
| G2.15  | 1'-5 <sup>1</sup> / <sub>16</sub> " | 2'-9 <sup>13</sup> / <sub>16</sub> " | 38°59'55" |
| G2.16  | 1'-7 <sup>1</sup> / <sub>8</sub> "  | 2'-11 <sup>5</sup> / <sub>16</sub> " | 35°28'54" |



**DETAIL 26**  
(Top Flange)  
(Bottom Flange Similar)



**SECTION C-C**

**NOTES:**

- All steel shall be AASHTO M 270 Grade 50.
- F.C. indicates Fracture Critical material, AASHTO Zone II.
- Load carrying components designated "N.T.R." shall conform to the supplemental requirements for Notch Toughness, Zone 2.

**CONNECTION DETAILS 25 & 26**  
**RAMP 2 FLARE**  
**STRUCTURE NO. 016-0724**

|                            |                |           |      |              |   |                            |             |                  |               |
|----------------------------|----------------|-----------|------|--------------|---|----------------------------|-------------|------------------|---------------|
| <b>TYLIN INTERNATIONAL</b> | DESIGNED - JPN | REVISIONS |      | SHEET NO. 86 | F.A.I. RTE. 55                                  | SECTION 0711.2R & 1011.1BR | COUNTY COOK | TOTAL SHEETS 200 | SHEET NO. 116 |
|                            | CHECKED - AMD, | NAME      | DATE |              |   |                            |             |                  |               |
|                            | DRAWN - JMA    |           |      |              |   |                            |             |                  |               |
|                            | CHECKED - AMD, |           |      |              |   |                            |             |                  |               |
| DATE - 08/02/10            |                |           |      | 137 SHEETS   | CONTRACT NO. 60L39                              |                            |             |                  |               |
|                            |                |           |      |              | FED. ROAD DIST. NO. 1 ILLINOIS FED. AID PROJECT |                            |             |                  |               |

p:\01345\beam and bearing\_fabrication\155f2framed\112.dwg 8/5/2010 2:47:10 PM