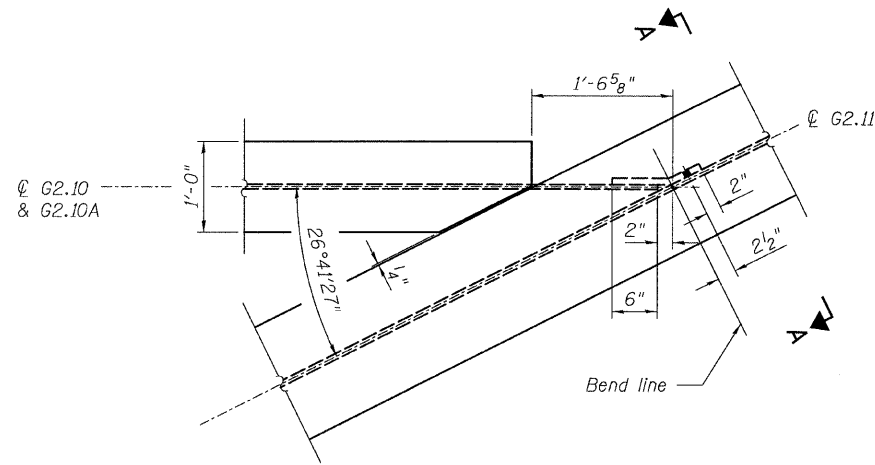
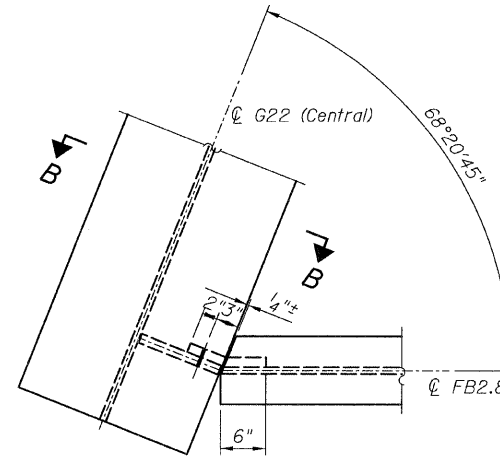


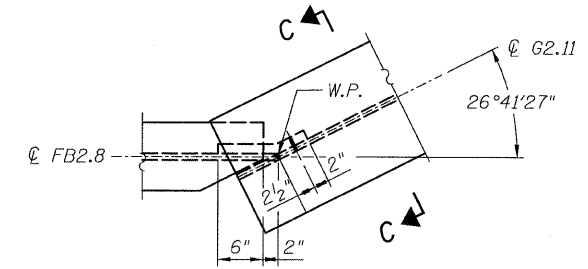
STATE OF ILLINOIS
DEPARTMENT OF TRANSPORTATION



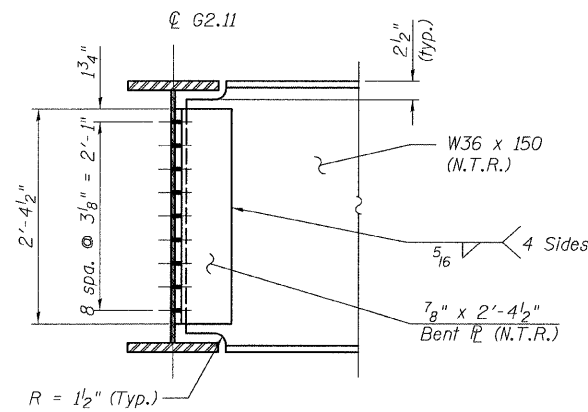
DETAIL 24A
(Top Flange)



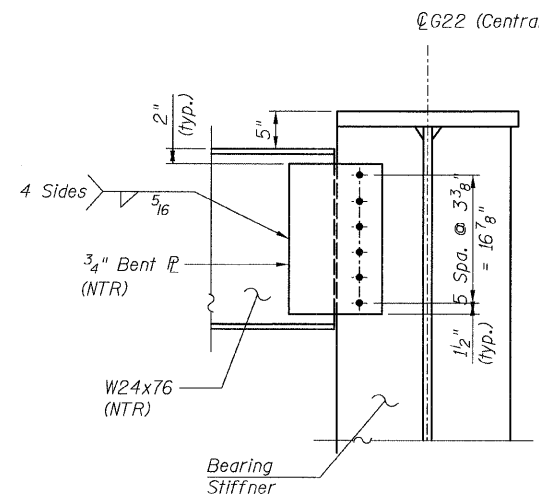
DETAIL 24B
(Top Flange)



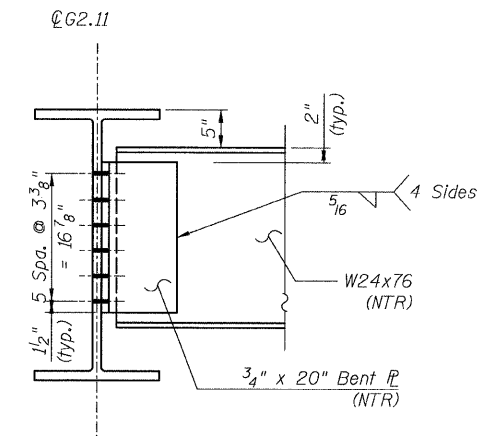
DETAIL 24C
(Top Flange)



SECTION A-A



SECTION B-B



SECTION C-C

NOTES:

- All steel shall be AASHTO M 270 Grade 50.
- Load carrying components designated "N.T.R." shall conform to the supplemental requirements for Notch Toughness, Zone 2.

CONNECTION DETAIL 24
RAMP 2 FLARE
STRUCTURE NO. 016-0724

TYLIN INTERNATIONAL	DESIGNED - JPN	REVISIONS		SHEET NO. 85	F.A.I. RTE.	SECTION	COUNTY	TOTAL SHEETS	SHEET NO.	
	CHECKED - AMD,	NAME	DATE		137 SHEETS	55	0711.2R & 1011.1BR	COOK	200	115
	DRAWN - MAU				CONTRACT NO. 60L39					
	CHECKED - AMD,				FED. ROAD DIST. NO. 1 ILLINOIS FED. AID PROJECT					
	DATE - 08/02/10									

8/2/2010 2:13:17 PM