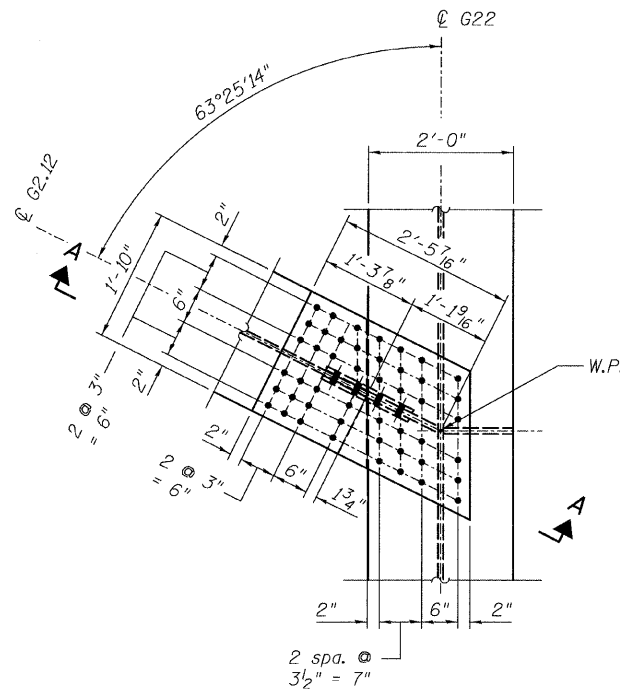
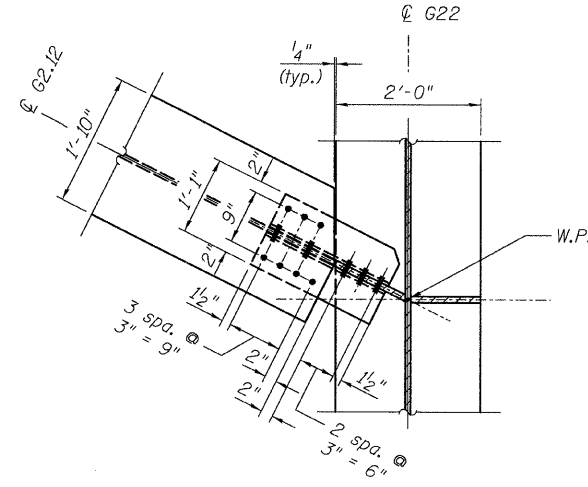


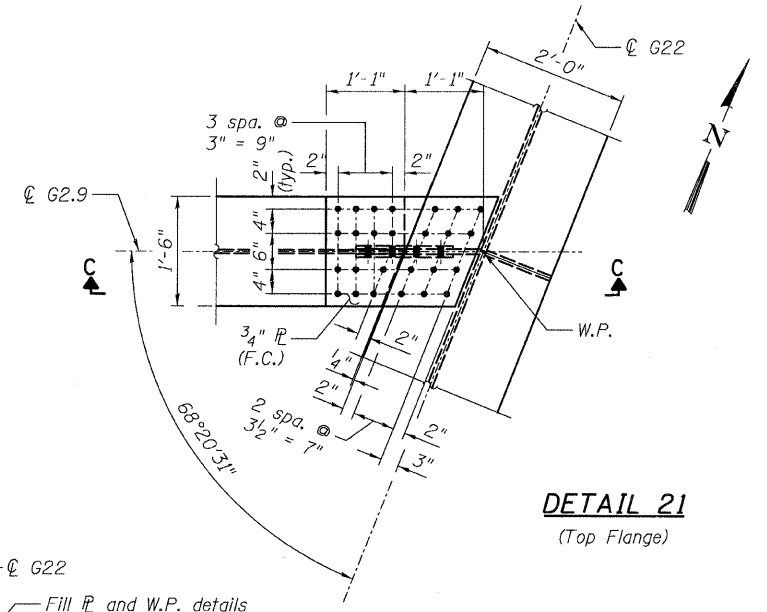
STATE OF ILLINOIS
DEPARTMENT OF TRANSPORTATION



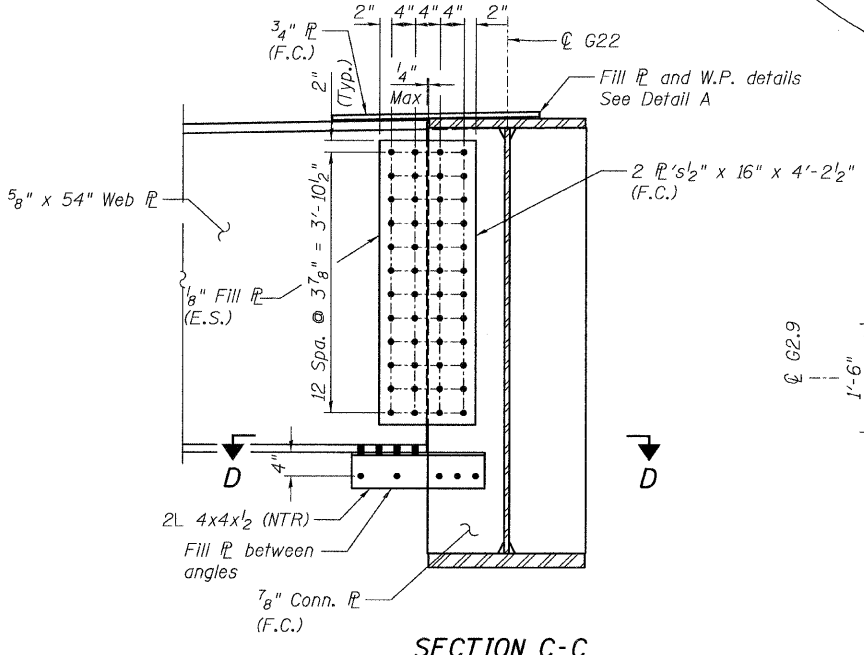
DETAIL 20
(Top Flange)



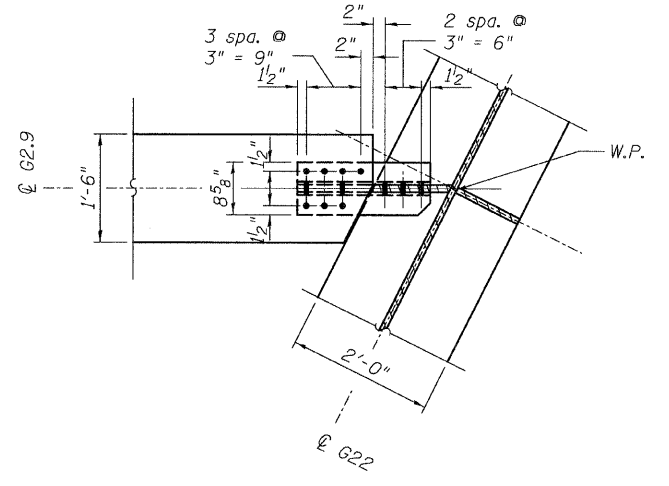
SECTION B-B
(Bottom Flange)



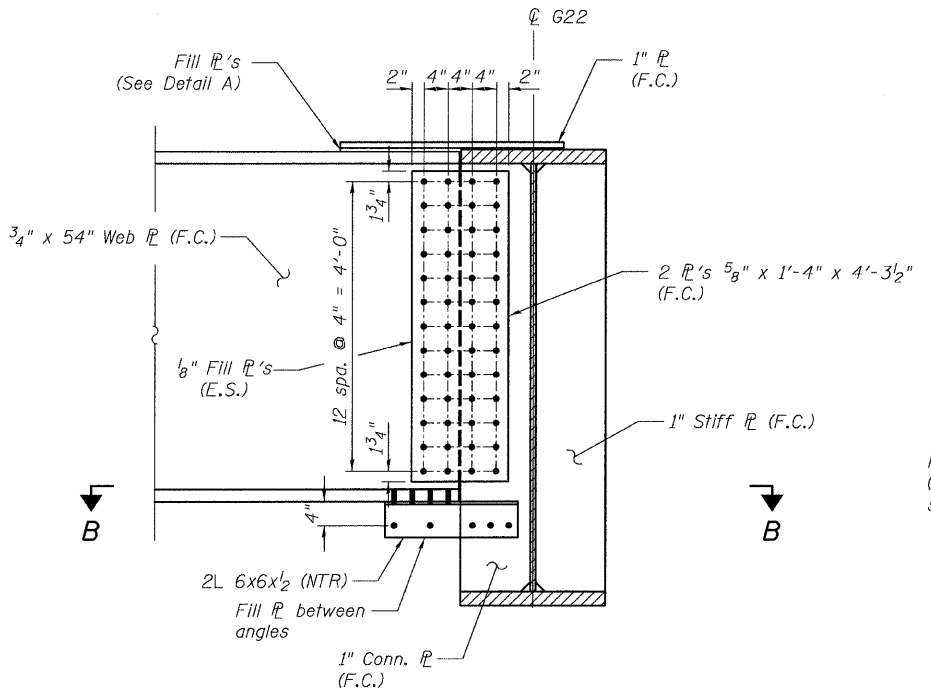
DETAIL 21
(Top Flange)



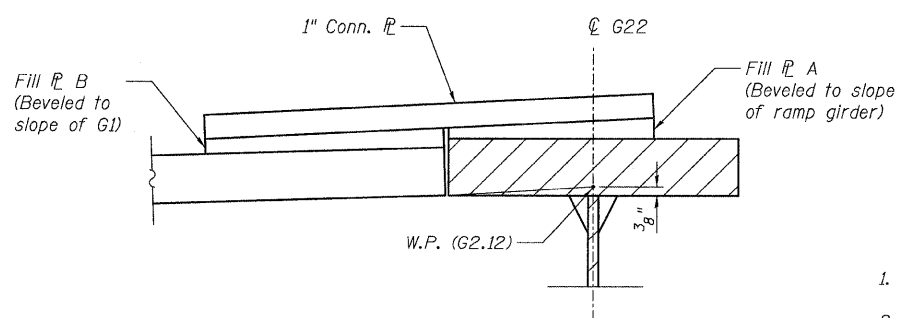
SECTION C-C



SECTION D-D
(Bottom Flange)



SECTION A-A



DETAIL A
(Not to scale)

NOTES:

- All steel shall be AASHTO M 270 Grade 50.
- F.C. indicates Fracture Critical Material, AASHTO Zone 2.
- Load carrying components designated "N.T.R." shall conform to the supplemental requirements for Notch Toughness, Zone 2.

CONNECTION DETAILS 20 & 21
RAMP 2 FLARE
STRUCTURE NO. 016-0724

TYLIN INTERNATIONAL	DESIGNED - JPN	REVISIONS		SHEET NO. 83	F.A.I. RTE.	SECTION	COUNTY	TOTAL SHEETS	SHEET NO.	
	CHECKED - AMD,	NAME	DATE		137 SHEETS	55	0711.2R & 1011.1BR	COOK	200	113
	DRAWN - MAU				CONTRACT NO. 60L39					
	CHECKED - AMD,				FED. ROAD DIST. NO. 1 ILLINOIS FED. AID PROJECT					
	DATE - 08/02/10									

p:\01345\beam and bearing fabrication\15512\framedtl9.dgn 2:47:08 PM 8/5/2010