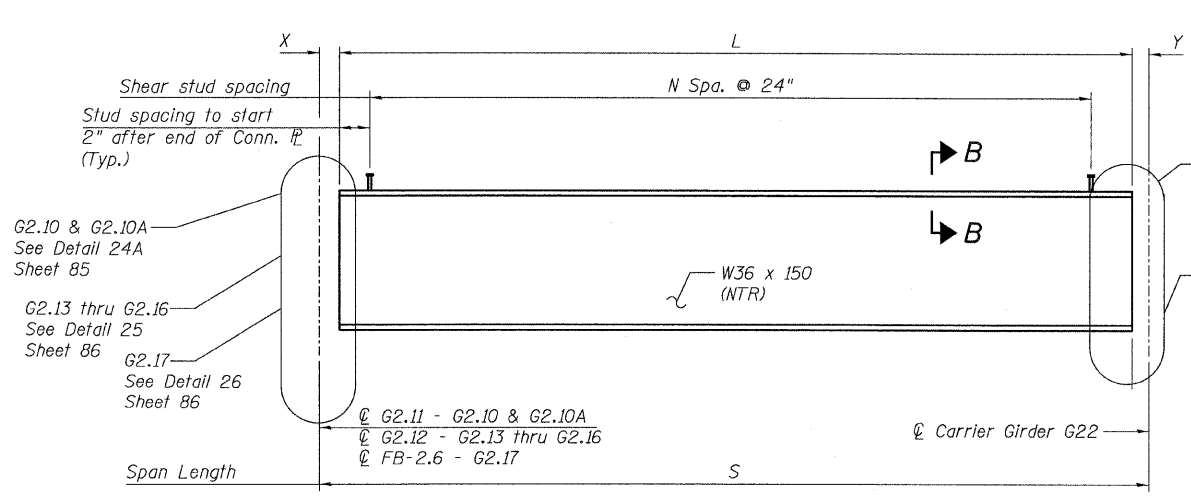
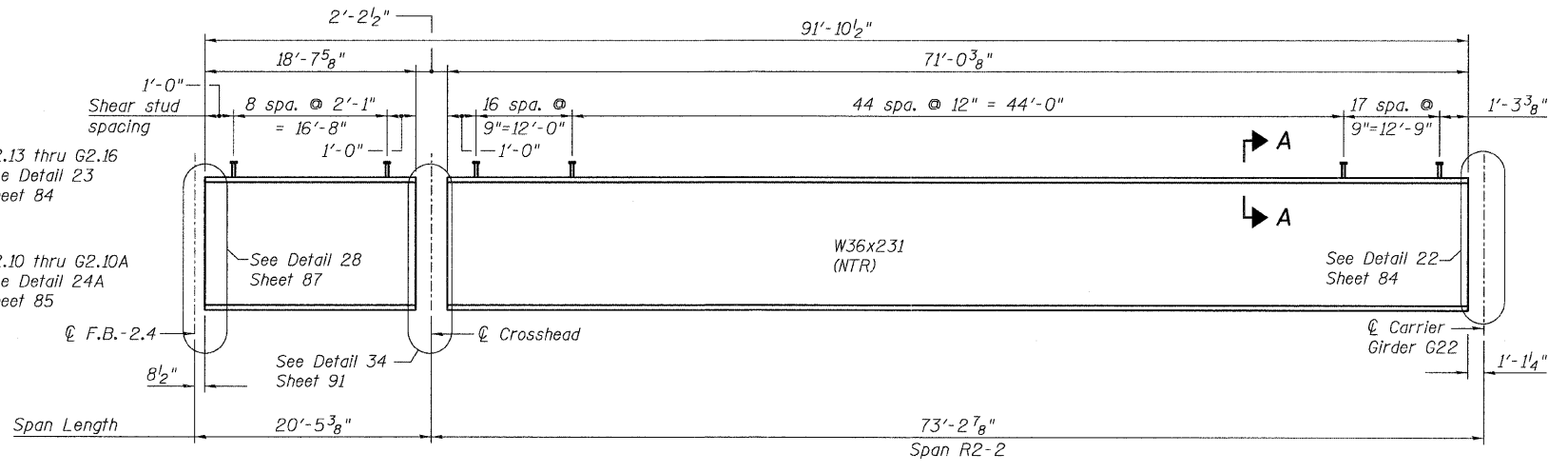


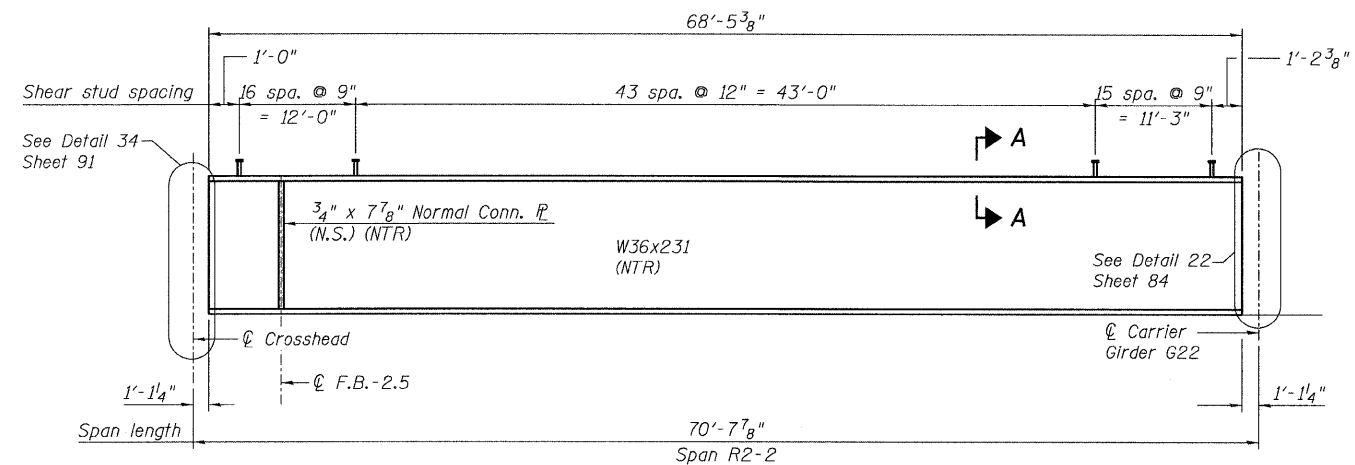
STATE OF ILLINOIS  
DEPARTMENT OF TRANSPORTATION



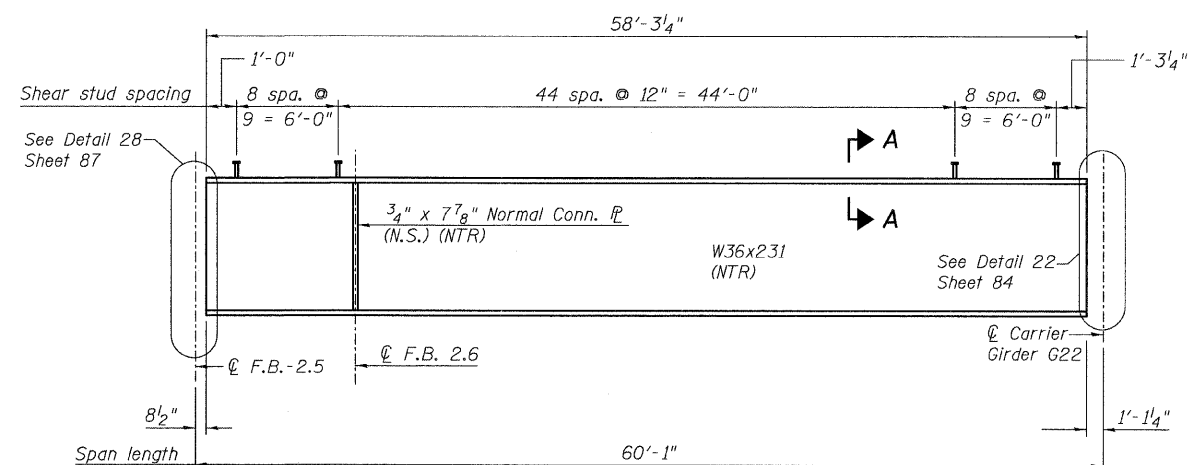
**GIRDER ELEVATIONS - G2.10, G2.10A & G2.13 THRU G2.17**  
(Looking North)



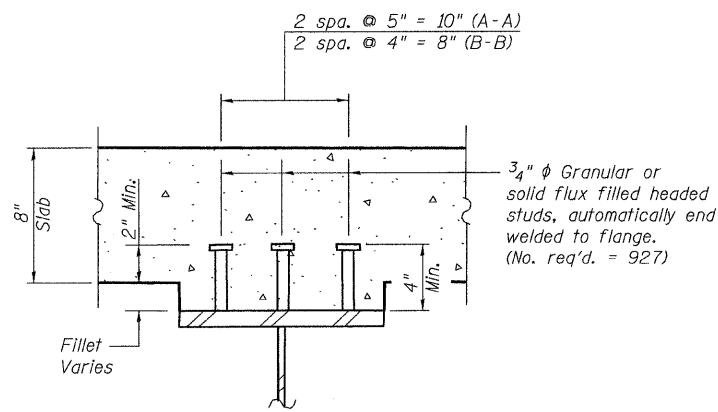
**GIRDER ELEVATION - G2.20**  
(Looking North)



**GIRDER ELEVATION - G2.19**  
(Looking North)



**GIRDER ELEVATION - G2.18**  
(Looking North)



**SECTION A-A & B-B**  
(Not in contract)

**TABLE OF GIRDER VALUES**

Girder	L	S	X	Y	N
G2.10	28'-3 1/4"	29'-6 3/8"	2"	1'-1 1/8"	12
G2.10A	17'-11 1/6"	19'-2 3/8"	2"	1'-1 1/8"	7
G2.13	6'-1"	8'-5 3/4"	1'-3 5/8"	1'-1 1/8"	2
G2.14	15'-4 3/8"	17'-10 1/8"	1'-4 9/16"	1'-1 1/8"	7
G2.15	25'-5 1/2"	27'-11 1/8"	1'-5 1/16"	1'-1 1/8"	12
G2.16	36'-5 1/4"	39'-1 1/2"	1'-7 1/8"	1'-1 1/8"	17
G2.17	45'-1 3/8"	46'-11"	8 1/2"	1'-1 1/8"	22

**NOTES:**

- All steel shown on this sheet shall be Conform to the requirements of AASHTO M270 GR 50.
- Load carrying components designated "NTR" shall conform to the Supplemental Requirements for Notch Toughness, Zone 2.
- For Connection Plate Detail see "Girder Elevations 1" Sheet 77.

**GIRDER ELEVATIONS 4**  
**RAMP 2 FLARE**  
**STRUCTURE NO. 016-0724**

<b>TYLIN INTERNATIONAL</b>	DESIGNED - JPN	REVISIONS		SHEET NO. 80	F.A.I. RTE.	SECTION	COUNTY	TOTAL SHEETS	SHEET NO.	
	CHECKED - AMD,	NAME	DATE		55	0711.2R & 1011.1BR	COOK	200	110	
	DRAWN - MAU				CONTRACT NO. 60L39					
	CHECKED - AMD,				FED. ROAD DIST. NO. 1 ILLINOIS FED. AID PROJECT					
	DATE - 08/02/10			137 SHEETS						

p:\01345\beam and bearing fabrication\55f2framed\6.dwg 8/5/2010 2:47:04 PM