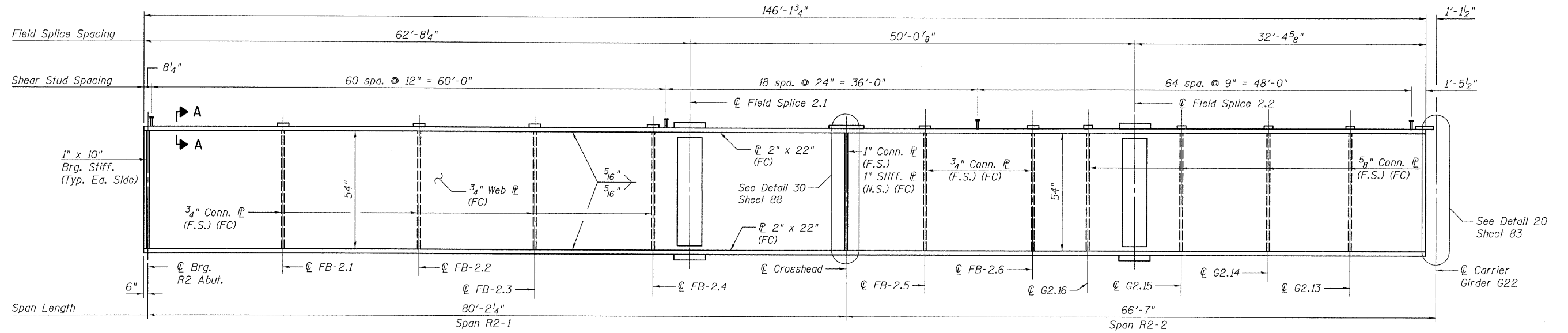
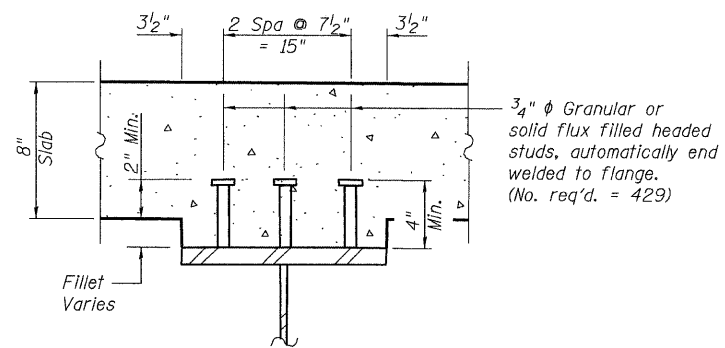


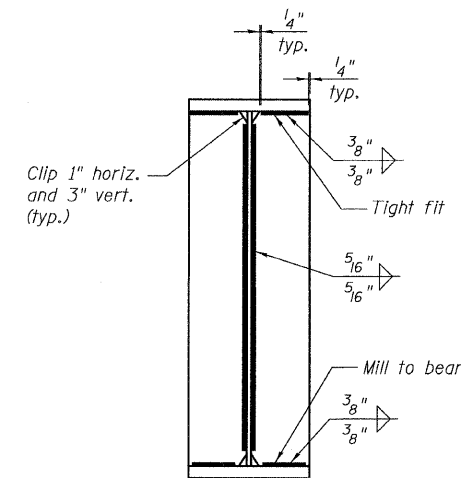
STATE OF ILLINOIS  
DEPARTMENT OF TRANSPORTATION



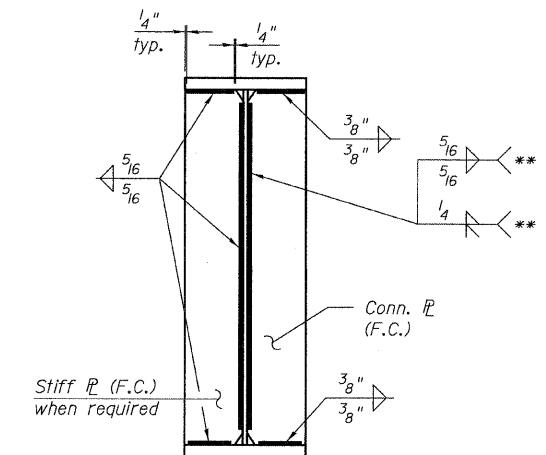
**GIRDER ELEVATION - G2.12**  
(Looking North)



**SECTION A-A**  
(Not in contract)



**BEARING STIFFENER**



\*\* Weld type based on angle between web and connection plate where angles warrant combination of fillet and groove welds. Fillet weld is acute angle and groove weld is obtuse angle.

**TYPICAL CONNECTION  
PLATE DETAIL**

**GIRDER ELEVATIONS 3  
RAMP 2 FLARE  
STRUCTURE NO. 016-0724**

**NOTES:**

- All steel shown on this sheet shall be Conform to the requirements of AASHTO M270 GR 50.
- F.C. denotes Fracture Critical Material, AASHTO Zone II.
- For Field Splice details, See Sheet 92.

<b>TYLIN INTERNATIONAL</b>	DESIGNED - JPN	REVISIONS		SHEET NO. 79	F.A.I. RTE.	SECTION	COUNTY	TOTAL SHEETS	SHEET NO.	
	CHECKED - AMD,	NAME	DATE		137 SHEETS	55	0711.2R & 1011.1BR	COOK	200	109
	DRAWN - MAU				CONTRACT NO. 60L39					
	CHECKED - AMD,				FED. ROAD DIST. NO. 1 ILLINOIS FED. AID PROJECT					
	DATE - 08/02/10									