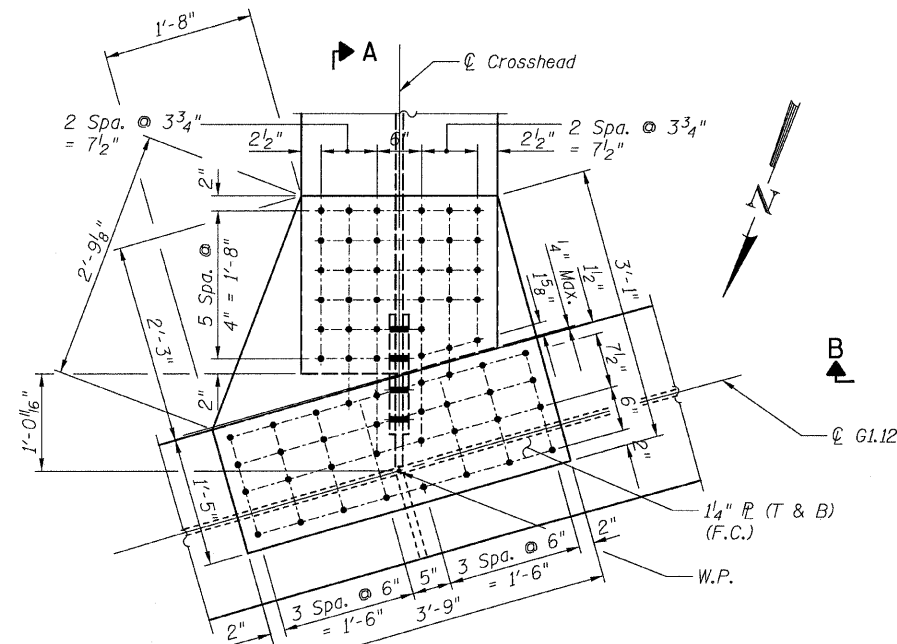
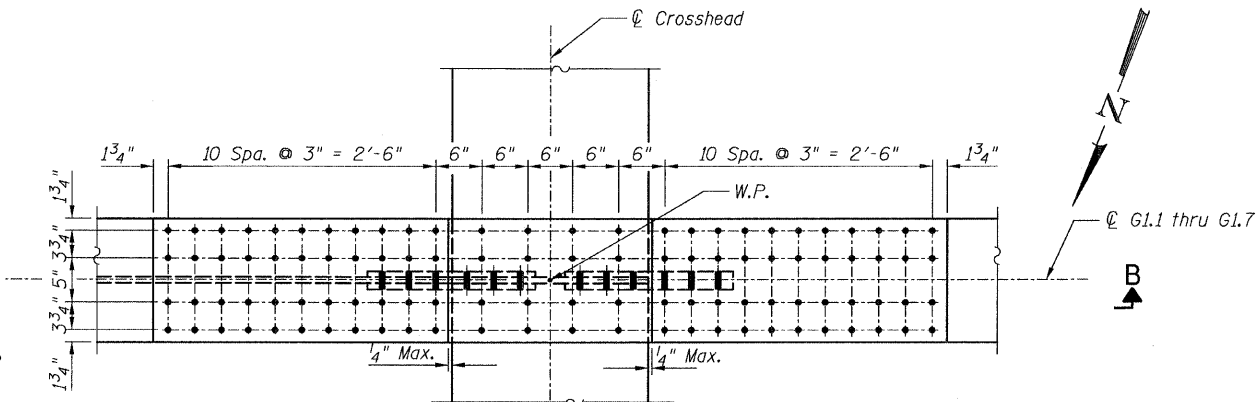


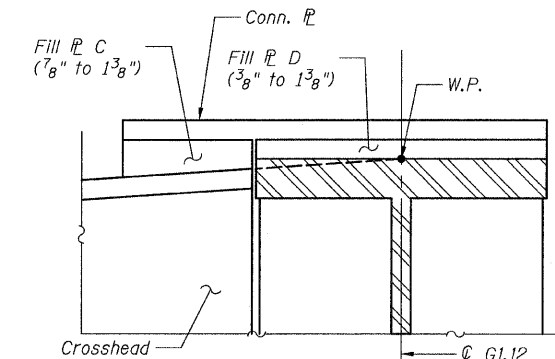
STATE OF ILLINOIS
DEPARTMENT OF TRANSPORTATION



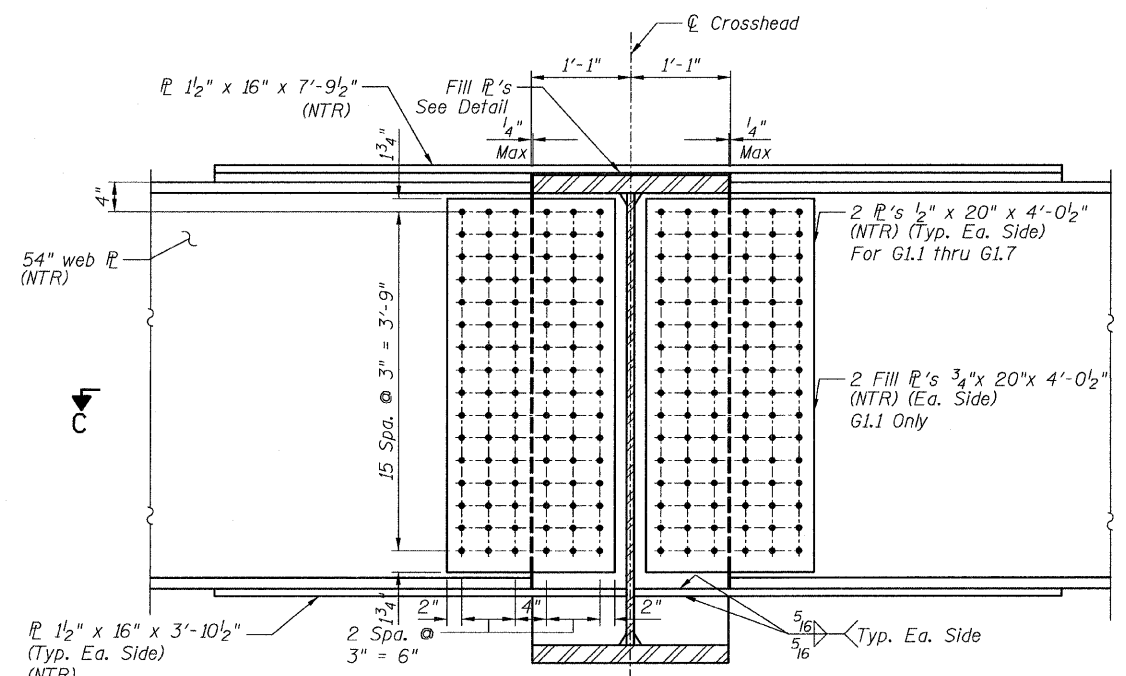
DETAIL 13
(Top Flange)
(Bottom Flange Similar)



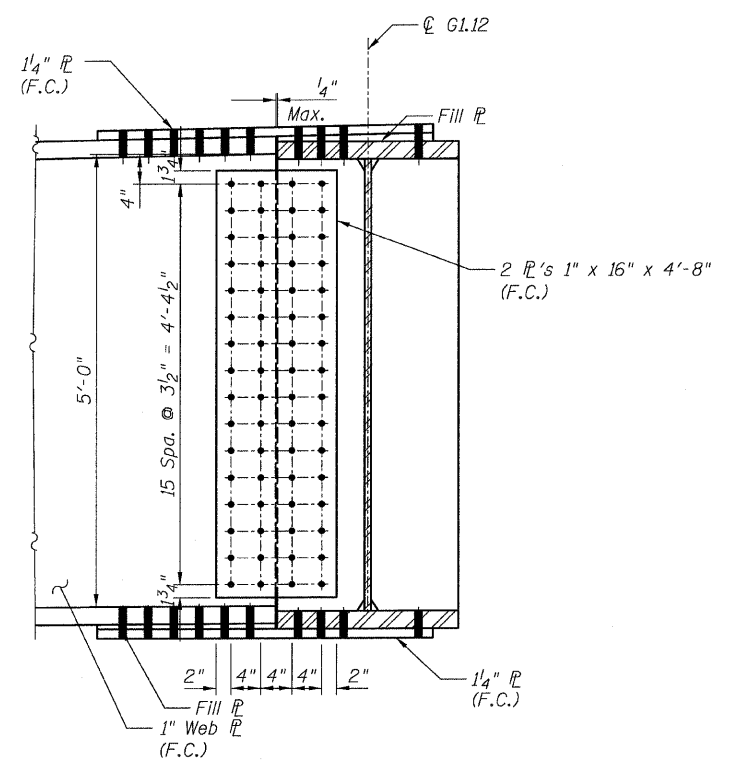
DETAIL 14
(Top Flange)



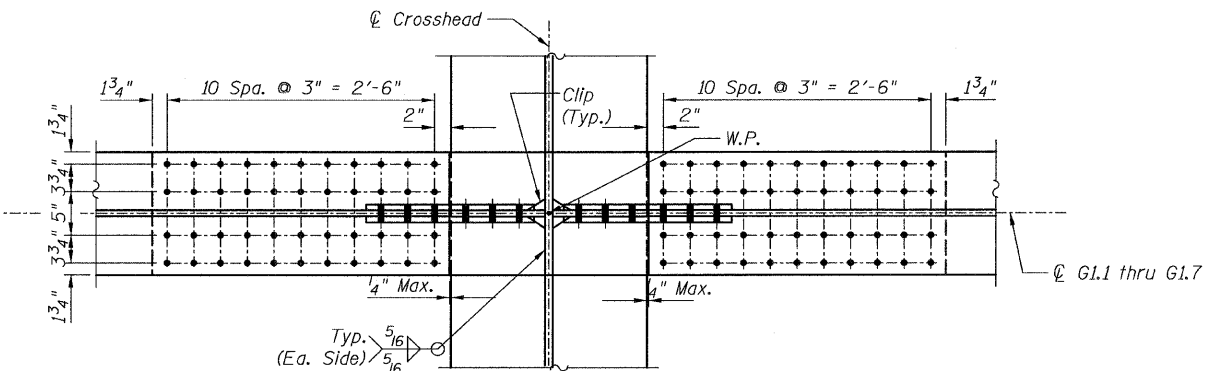
FILL P DETAIL G.1.12



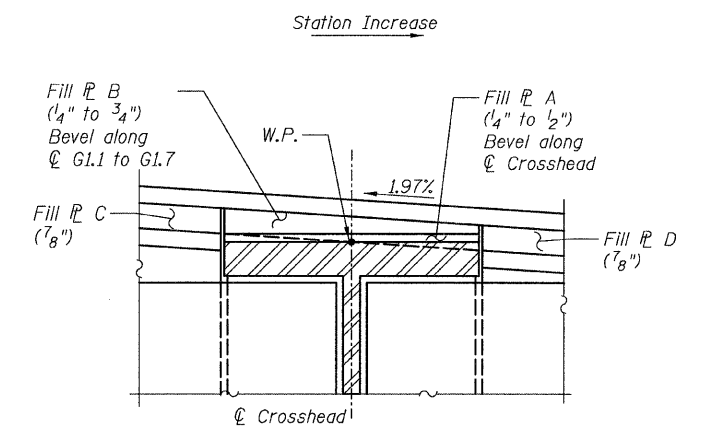
SECTION B-B
(Top & Bot. R Conn. Bolts
not shown for clarity)



SECTION A-A



SECTION C-C



FILL P DETAIL

NOTES:

- All steel shall be AASHTO M270 Grade 50.
- For Details 13 and 14 locations, see Sheet 41.
- F.C. - denotes Fracture Critical Material, AASHTO Zone II.
- Load carrying components designated "NTR" shall conform to the Supplemental Requirements for Notch Toughness, Zone 2.

CONNECTION DETAILS 13&14
RAMP 1 FLARE
STRUCTURE NO. 016-0724

TYLIN INTERNATIONAL	DESIGNED - EKH, JMA	REVISIONS		SHEET NO. 71	F.A.I RTE.	SECTION	COUNTY	TOTAL SHEETS	SHEET NO.					
	CHECKED - AMD,	NAME	DATE							55	0711.2R & 1011.1BR	COOK	200	101
	DRAWN - EKH, JMA									CONTRACT NO. 60L39				
	CHECKED - AMD,									FED. ROAD DIST. NO. 1 ILLINOIS FED. AID PROJECT				
	DATE - 08/02/10			137 SHEETS										

8/13/2010 5:34:16 PM p:\01345\beam and bearing fabrication\155f1\frameedit17.dwg