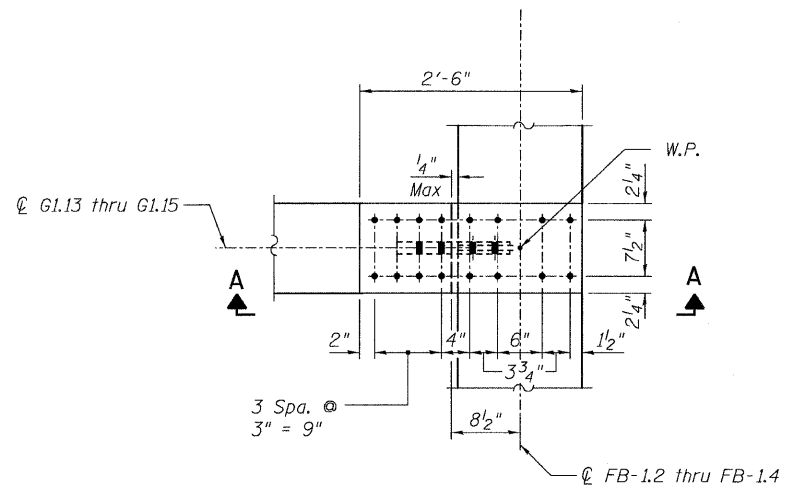
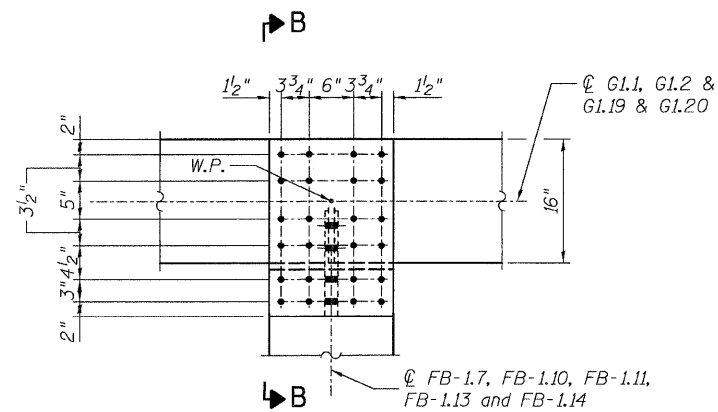


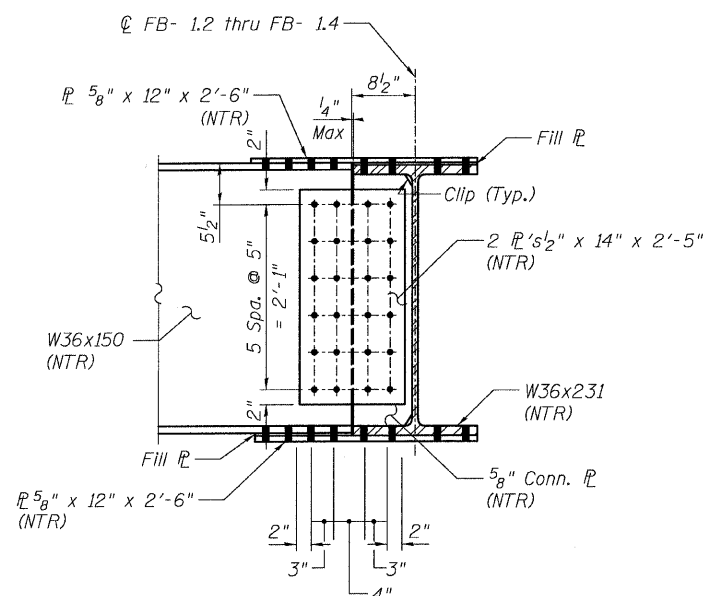
STATE OF ILLINOIS
DEPARTMENT OF TRANSPORTATION



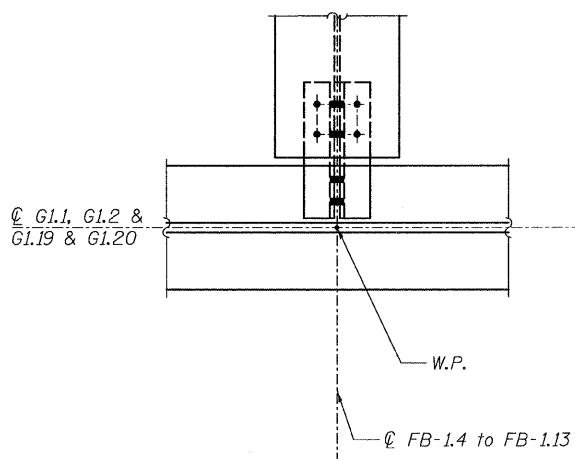
DETAIL 9
(Top Flange)
(Bottom Flange Similar)



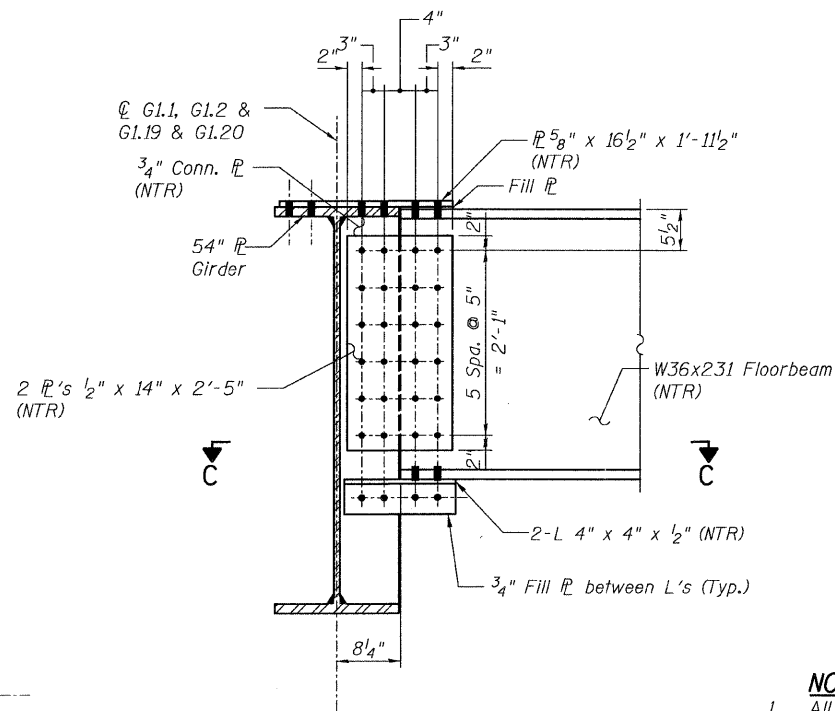
DETAIL 10
(Top Flange)



SECTION A-A



SECTION C-C



SECTION B-B

NOTES:

1. All steel shall be AASHTO M270 Grade 50.
2. For Details 9 and 10 locations, see Sheet 41.
3. Load carrying components designated "NTR" shall conform to the Supplemental Requirements for Notch Toughness, Zone 2.

CONNECTION DETAILS 98&10
RAMP 1 FLARE
STRUCTURE NO. 016-0724

| | | | | | | | | | | |
|----------------------------|---------------------|-----------|------|---|---------------------|-------------------------------|----------------|------------------------|--------------------|--------------------|
| TYLIN INTERNATIONAL | DESIGNED - EKH, JMA | REVISIONS | | SHEET NO. 69 137 SHEETS | F.A.I RTE. 55 | SECTION 0711.2R & 1011.1BR | COUNTY COOK | TOTAL SHEETS 200 | SHEET NO. 99 | |
| | CHECKED - AMD, | NAME | DATE | | | | | | | CONTRACT NO. 60L39 |
| | DRAWN - EKH, JMA | | | | | | | | | |
| | CHECKED - AMD, | | | | | | | | | |
| DATE - 08/02/10 | | | | FED. ROAD DIST. NO. 1 ILLINOIS FED. AID PROJECT | | | | | | |