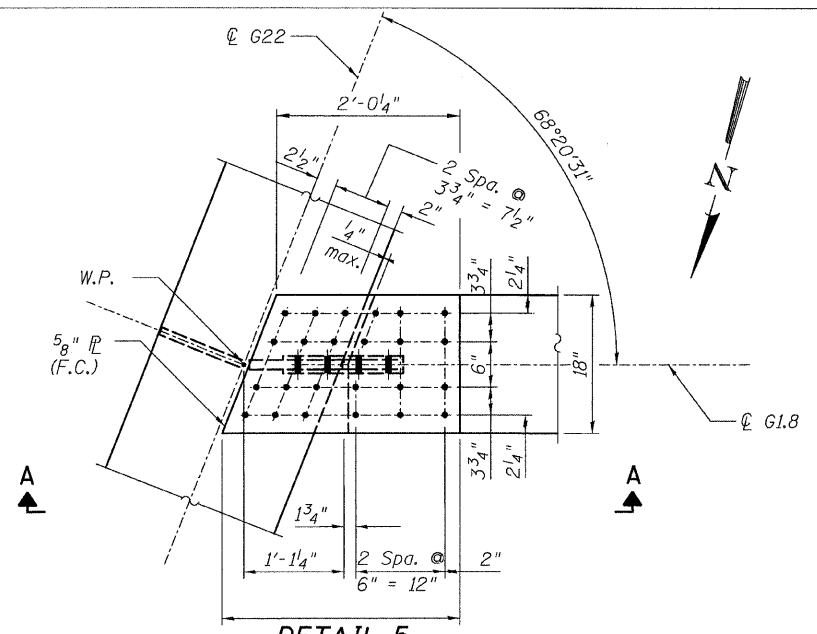
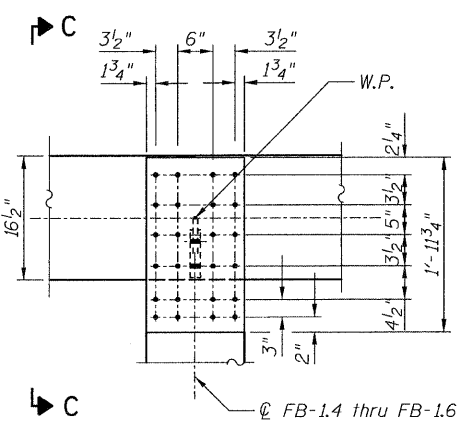


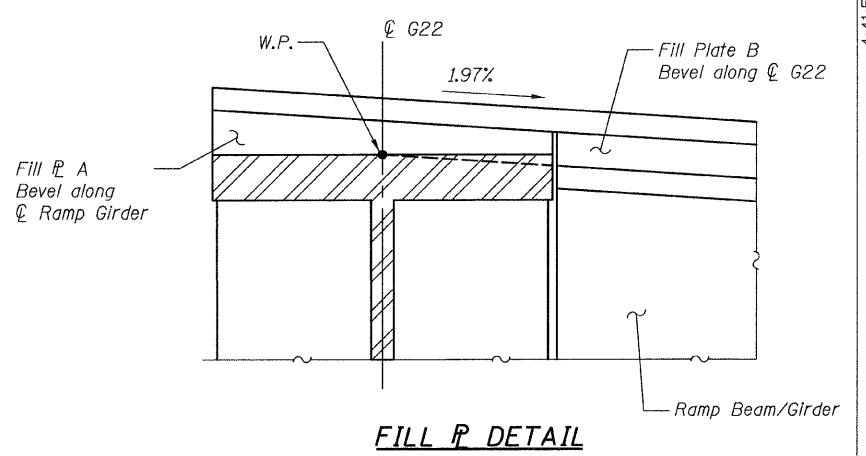
STATE OF ILLINOIS
DEPARTMENT OF TRANSPORTATION



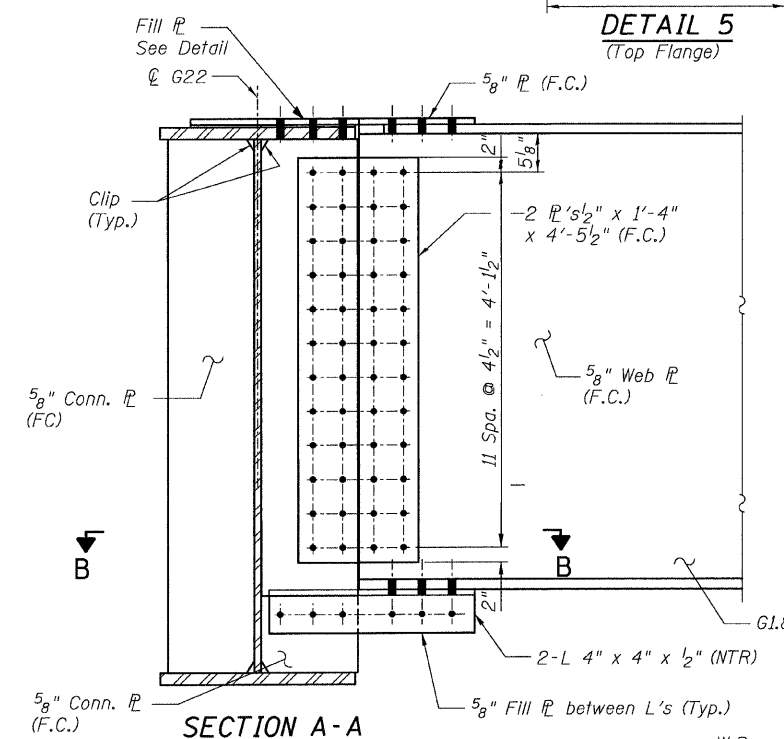
DETAIL 5
(Top Flange)



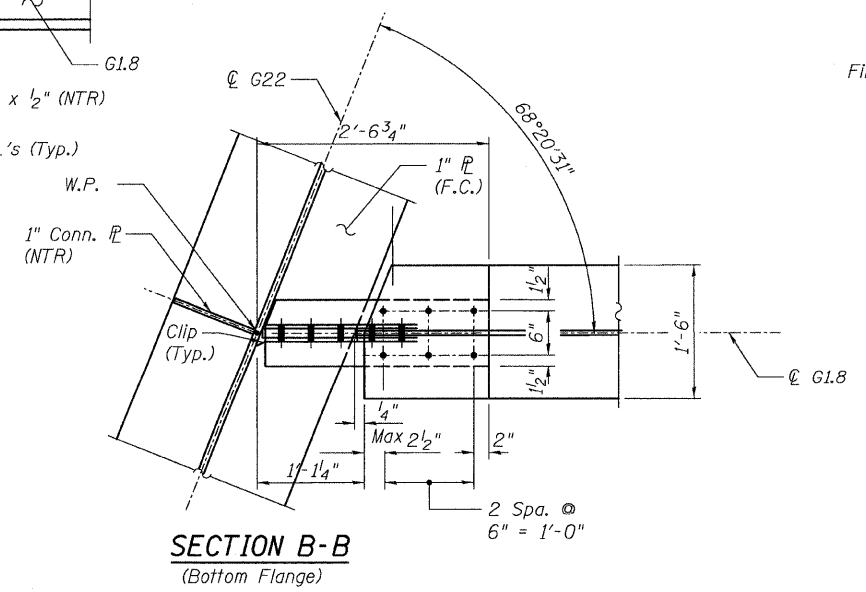
DETAIL 6
(Top Flange)
(Bot. Flange Similar)



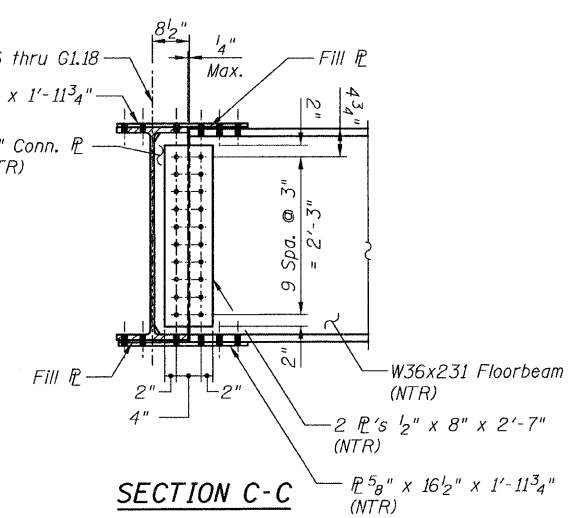
FILL PLATE DETAIL



SECTION A-A



SECTION B-B
(Bottom Flange)



SECTION C-C

NOTES:

1. All steel shall be AASHTO M270 Grade 50.
2. For Details 5 and 6 locations, see Sheet 41.
3. F.C. - denotes Fracture Critical Material, AASHTO Zone II.
4. Load carrying components designated "NTR" shall conform to the Supplemental Requirements for Notch Toughness, Zone 2.

**CONNECTION DETAILS 5&6
RAMP 1 FLARE
STRUCTURE NO. 016-0724**

| | | | | | | | | | | | |
|----------------------------|---------------------|-----------|------|----------------------------|---------------------|-------------------------------|----------------|------------------------|--------------------|---|--|
| TYLIN INTERNATIONAL | DESIGNED - EKH, JMA | REVISIONS | | SHEET NO. 67 137 SHEETS | F.A.I RTE. 55 | SECTION 0711.2R & 1011.1BR | COUNTY COOK | TOTAL SHEETS 200 | SHEET NO. 97 | | |
| | CHECKED - AMD, | NAME | DATE | | | | | | | CONTRACT NO. 60L39 | |
| | DRAWN - EKH, JMA | | | | | | | | | FED. ROAD DIST. NO. 1 ILLINOIS FED. AID PROJECT | |
| | CHECKED - AMD, | | | | | | | | | | |
| | DATE - 08/02/10 | | | | | | | | | | |

4:41:53 PM
p:\01345\beam_and_bearing_fabrication\55ffrframedt13.dgn
8/13/2010