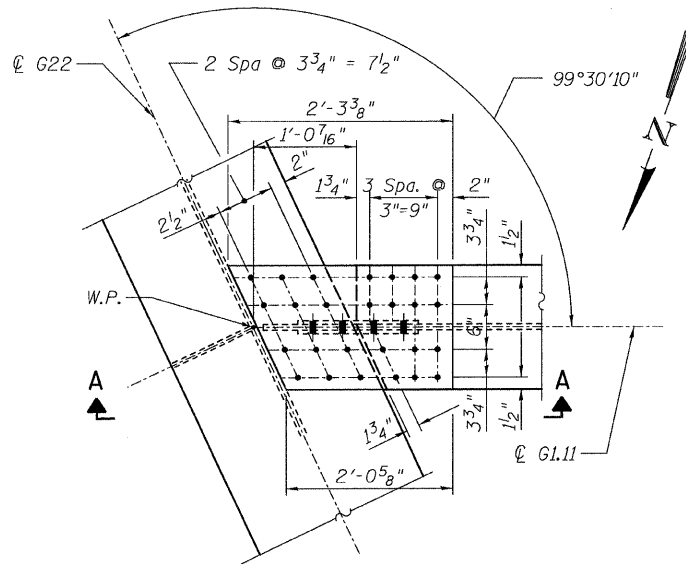
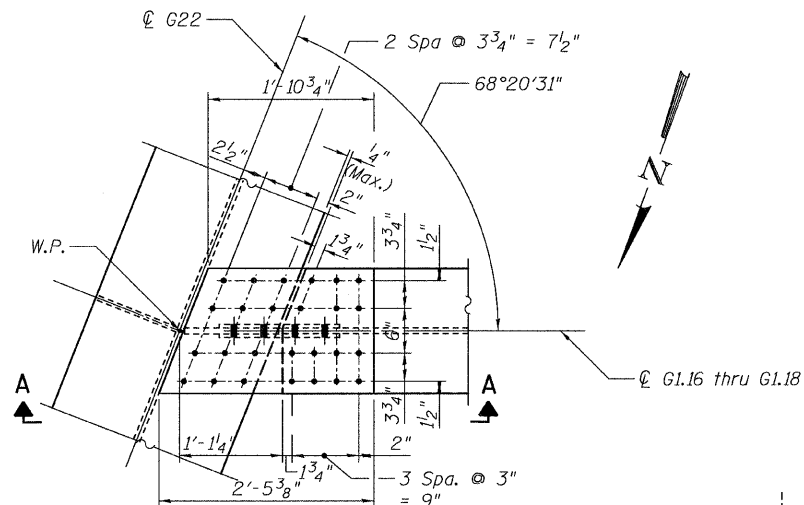


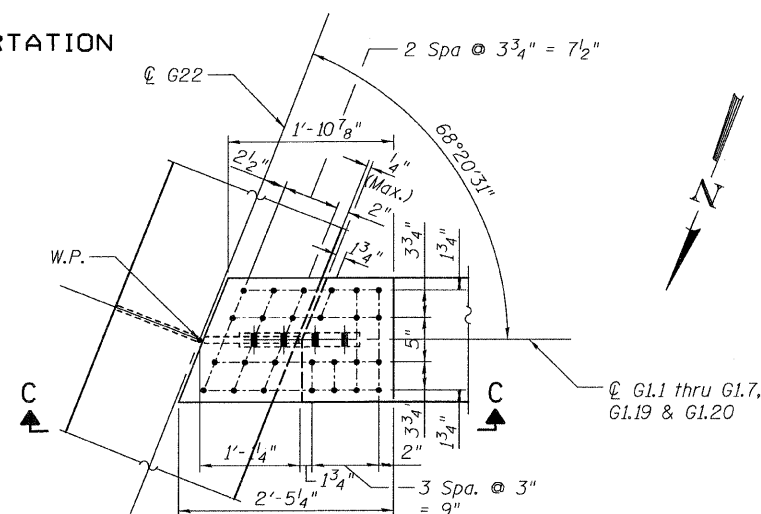
STATE OF ILLINOIS
DEPARTMENT OF TRANSPORTATION



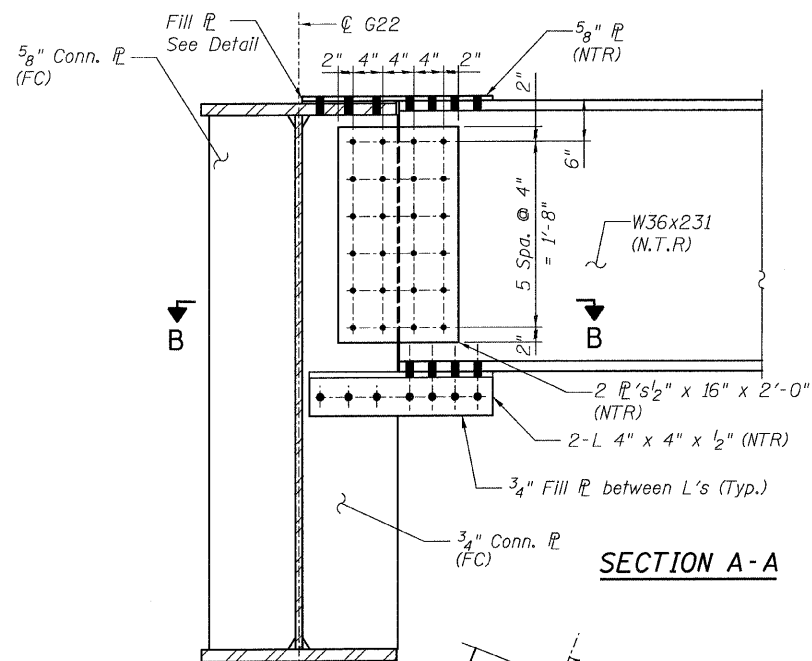
DETAIL 3
(Top Flange @ G1.11)



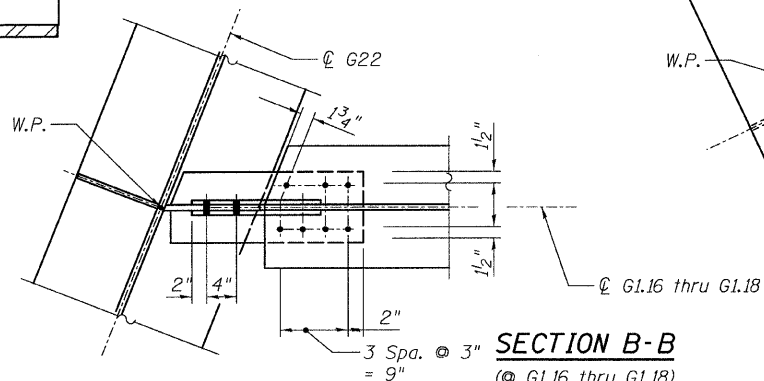
DETAIL 3
(Top Flange @ G1.16 thru G1.18)



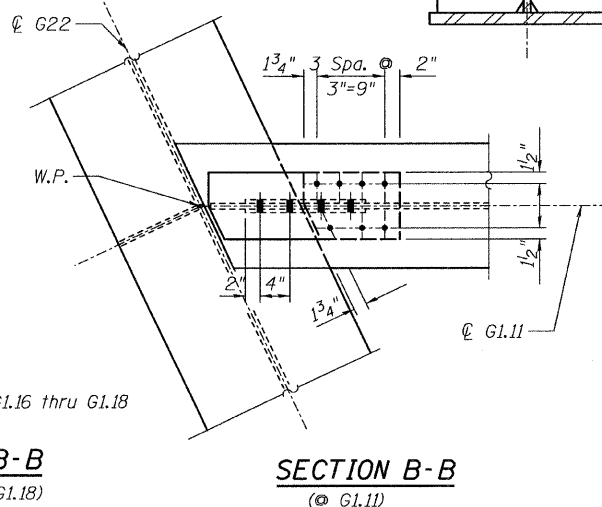
DETAIL 4
(Top Flange)



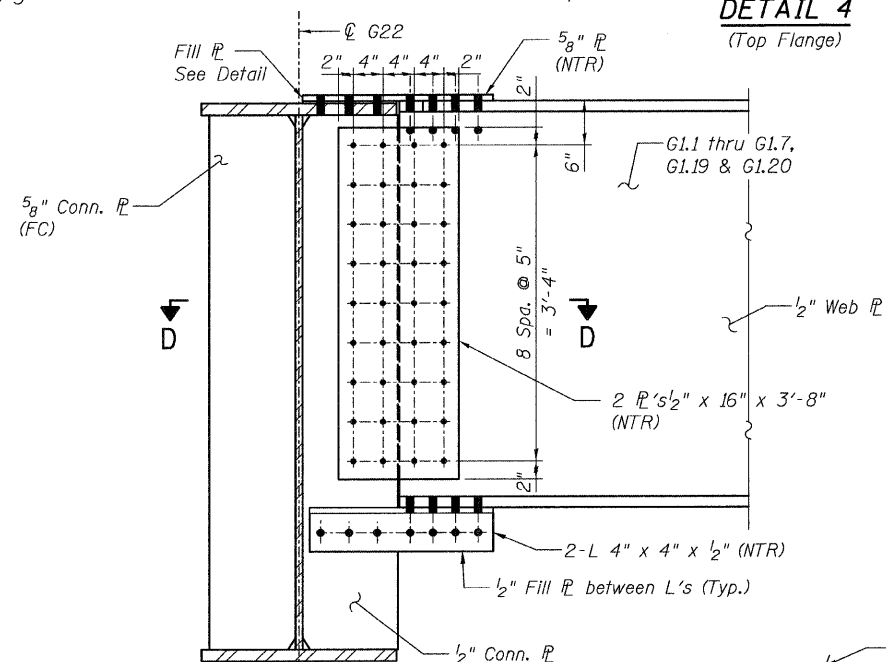
SECTION A-A



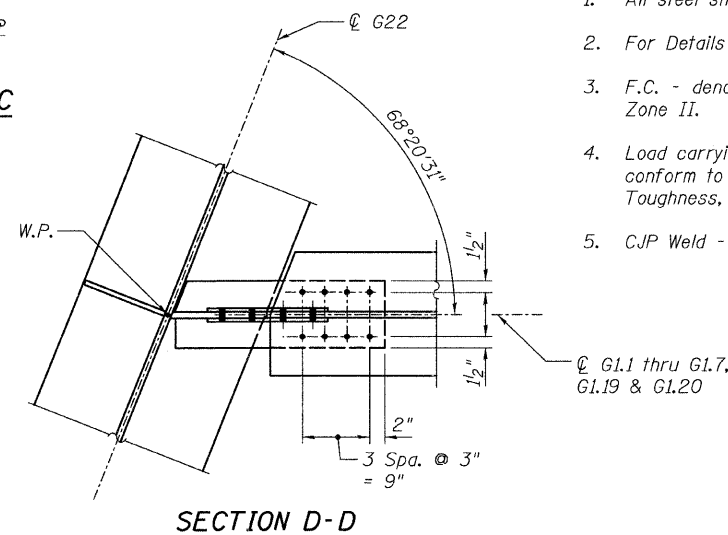
SECTION B-B
(@ G1.16 thru G1.18)



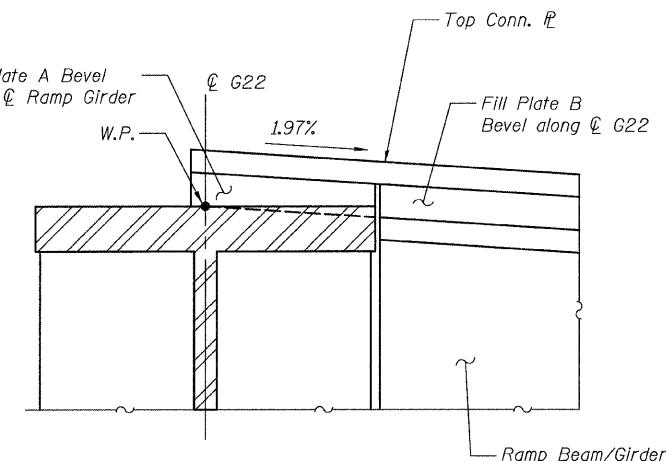
SECTION B-B
(@ G1.11)



SECTION C-C



SECTION D-D



FILL PLATE DETAIL

NOTES:

- All steel shall be AASHTO M270 Grade 50
- For Details 3 and 4 locations, see Sheet 41.
- F.C. - denotes Fracture Critical Material, AASHTO Zone II.
- Load carrying components designated "NTR" shall conform to the Supplemental Requirements for Notch Toughness, Zone 2.
- CJP Weld - denotes Complete Joint Penetration Weld.

CONNECTION DETAILS 3&4
RAMP 1 FLARE
STRUCTURE NO. 016-0724

TYLIN INTERNATIONAL

| DESIGNED | EKH, JMA | REVISIONS | |
|----------|----------|-----------|------|
| CHECKED | AMD, | NAME | DATE |
| DRAWN | EKH, JMA | | |
| CHECKED | AMD, | | |
| DATE | 08/02/10 | | |

| | | | | | |
|-----------------------|-------------|----------|--------------------|--------------|-----------|
| SHEET NO. 66 | F.A.I. RTE. | SECTION | COUNTY | TOTAL SHEETS | SHEET NO. |
| | 137 SHEETS | 55 | 0711.2R & 1011.1BR | COOK | 200 96 |
| | | | CONTRACT NO. 60L39 | | |
| FED. ROAD DIST. NO. 1 | | ILLINOIS | FED. AID PROJECT | | |

p:\01345\beam and bearing fabrication\55fframed112.dwg

8/13/2010

4:41:52 PM