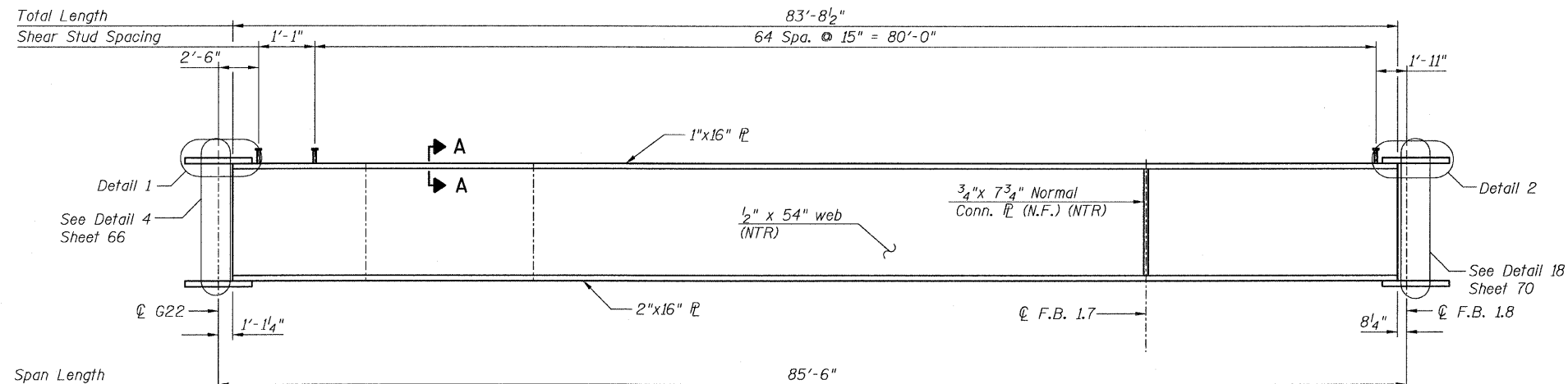
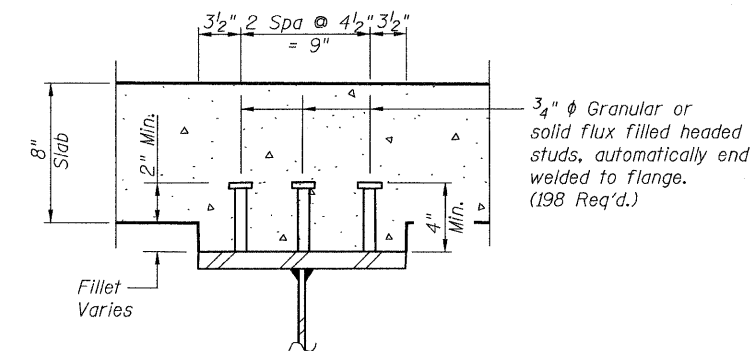


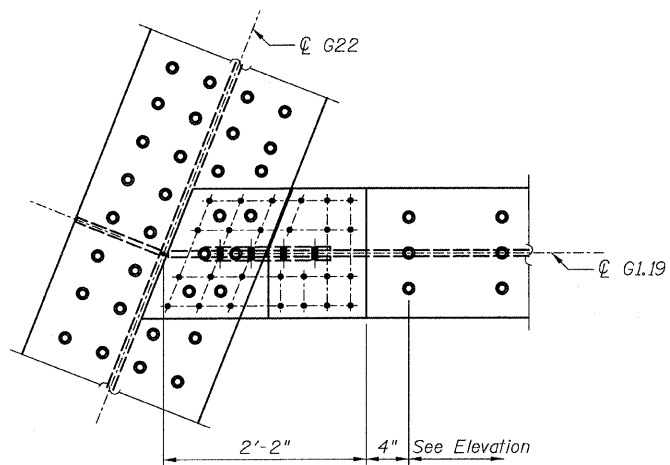
STATE OF ILLINOIS
DEPARTMENT OF TRANSPORTATION



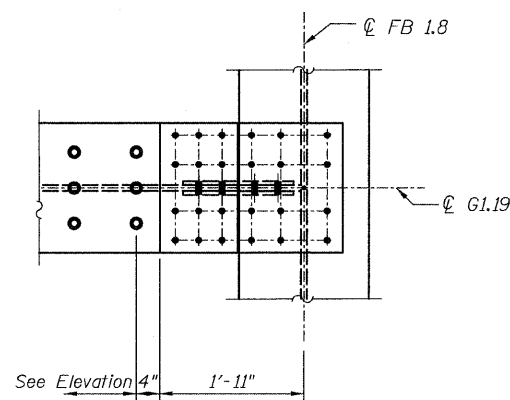
GIRDER ELEVATION - G1.19
(Looking South)



SECTION A-A
Not in contract



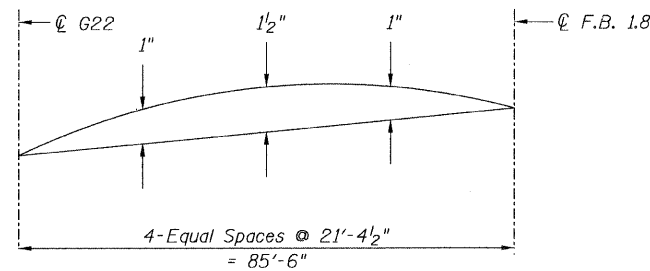
DETAIL 1



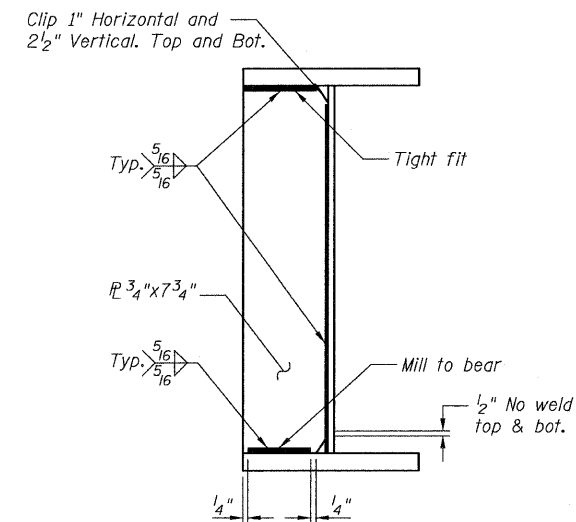
DETAIL 2

TOP OF WEB ELEVATIONS
(For Fabrication Only)

Location	Elevation
Centerline G22	626.35
Centerline F.B. 1.8	



CAMBER DIAGRAMS



TYPICAL CONN. R DETAIL
(@ Floor beams)

NOTES:

- All steel shown on this sheet shall conform to the requirements of AASHTO M270 GR 50.
- Load carrying components designated "NTR" shall conform to the supplemental requirements for Notch Toughness, Zone 2.
- N.F. denotes Near Face.

GIRDER ELEVATIONS 6
RAMP 1 FLARE
STRUCTURE NO. 016-0724

TYLIN INTERNATIONAL	DESIGNED - EKH, JMA, PK	REVISIONS		SHEET NO. 62	F.A.I. RTE.	SECTION	COUNTY	TOTAL SHEETS	SHEET NO.	
	CHECKED - AMD,	NAME	DATE		55	0711.2R & 1011.1BR	COOK	200	92	
	DRAWN - EKH, JMA, PK				CONTRACT NO. 60L39					
	CHECKED - AMD,				FED. ROAD DIST. NO. 1 ILLINOIS FED. AID PROJECT					
	DATE - 08/02/10									