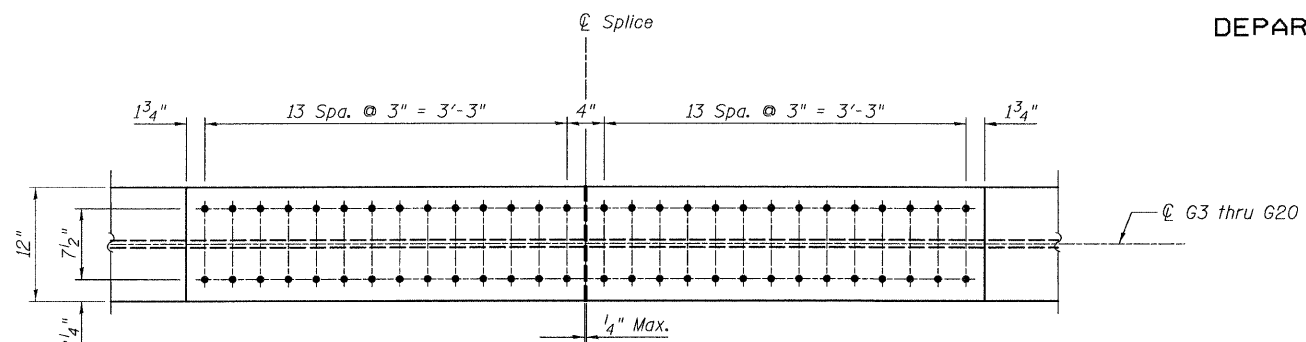
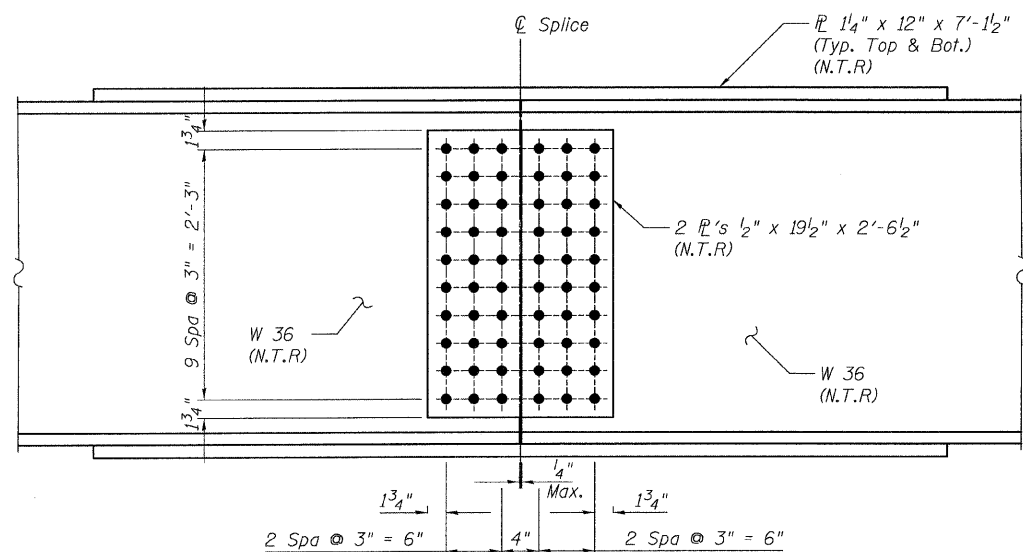


STATE OF ILLINOIS
DEPARTMENT OF TRANSPORTATION

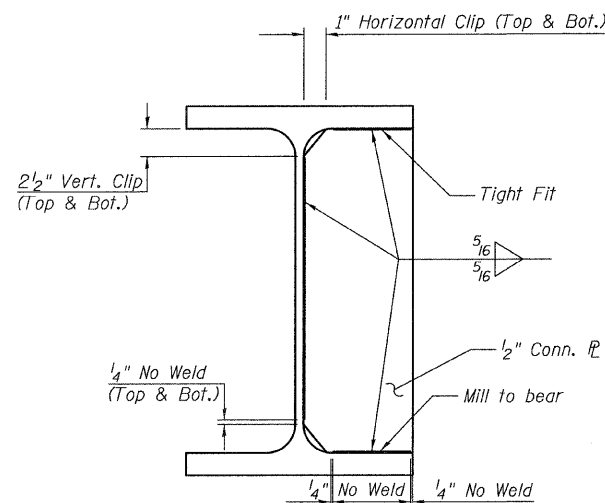


TOP VIEW

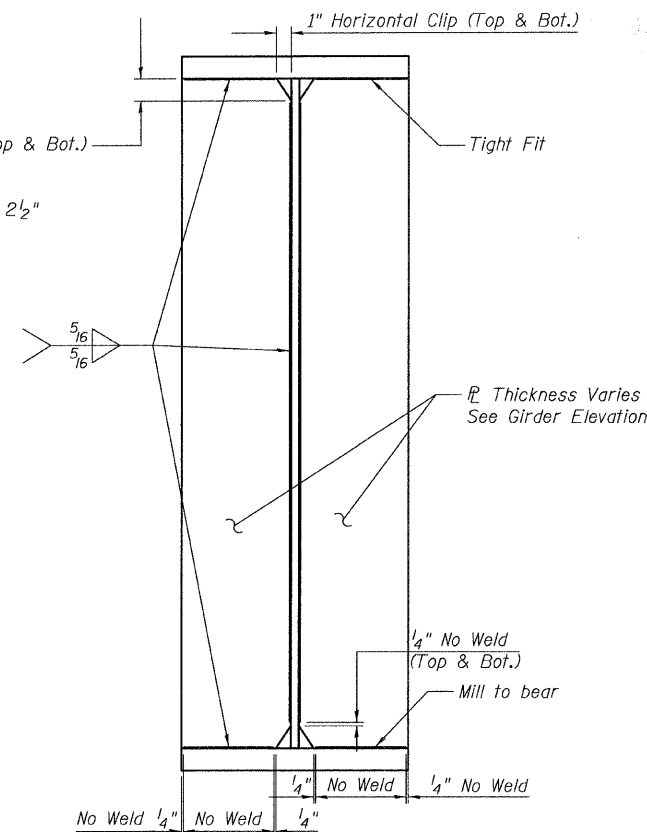


ELEVATION
FIELD SPLICES 3a, 3b, 3c

(G3 Thru G20)



CONN. PLATE DETAIL
FOR ROLLED BEAM



TYPICAL BEARING STIFFENER AND CONN. PLATE
DETAIL @ GIRDERS

NOTES:

1. All splice materials to be AASHTO M 270 Grade 50.
2. All bolts shall be 7/8" ϕ AASHTO M164 with 5/16" ϕ holes.
3. Load carrying components designated *NTR* shall conform to the Supplemental Requirements for Notch Toughness, Zone 2.

FIELD SPLICE 3 & CONNECTION DETAILS
CENTRAL / I-55
STRUCTURE NO. 016-0724

TYLIN INTERNATIONAL	DESIGNED - JMA	REVISIONS		SHEET NO. 53	F.A.I. RTE. 55	SECTION 0711.2R & 1011.1BR	COUNTY COOK	TOTAL SHEETS	SHEET NO.
	CHECKED - AMD,	NAME	DATE					200	83
	DRAWN - JMA							CONTRACT NO. 60L39	
	CHECKED - AMD,							FED. ROAD DIST. NO. 1 ILLINOIS FED. AID PROJECT	
	DATE - 08/02/10								

4:32:54 PM

p:\013445\beam and bearing fabrication\5562famedt2.dgn

8/13/2010