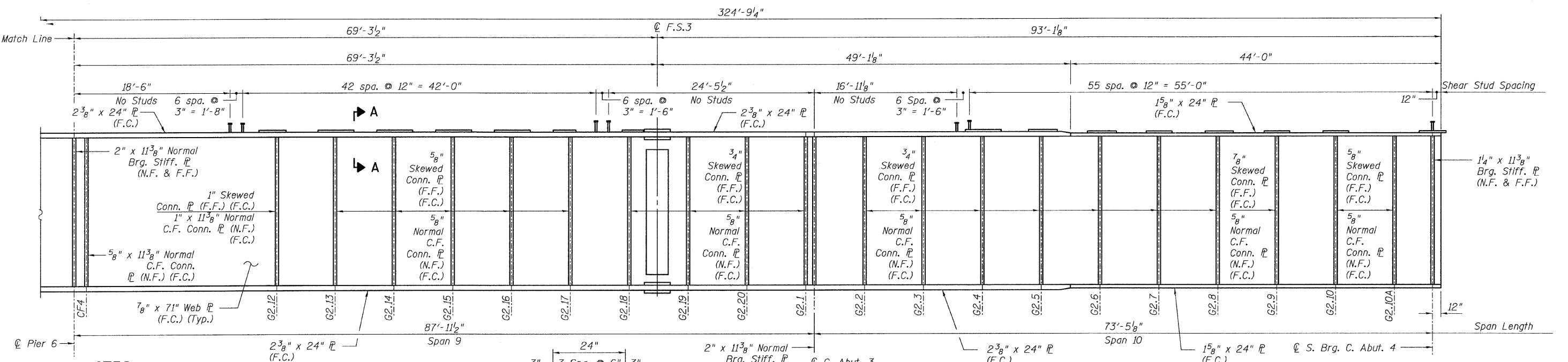
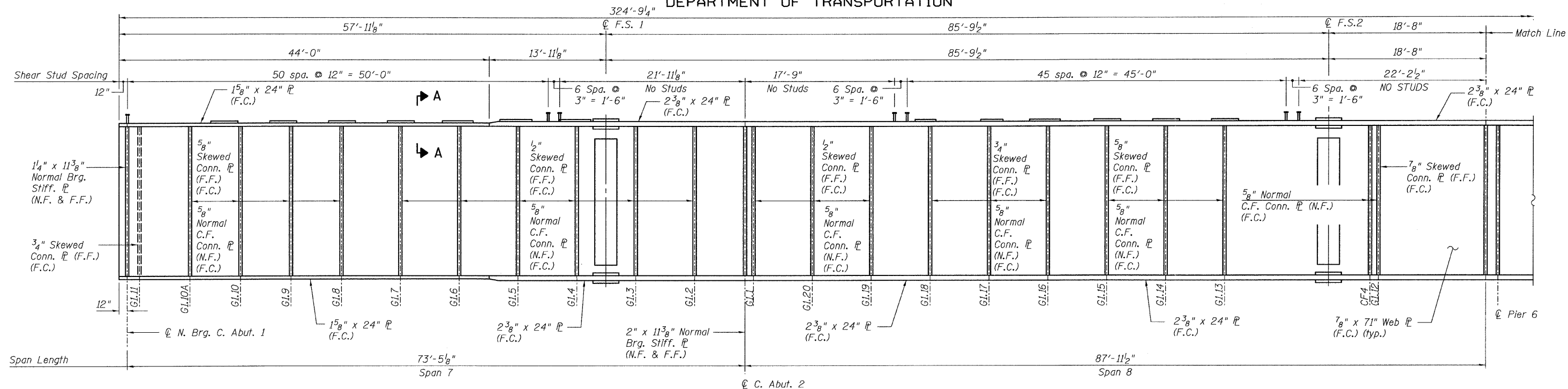
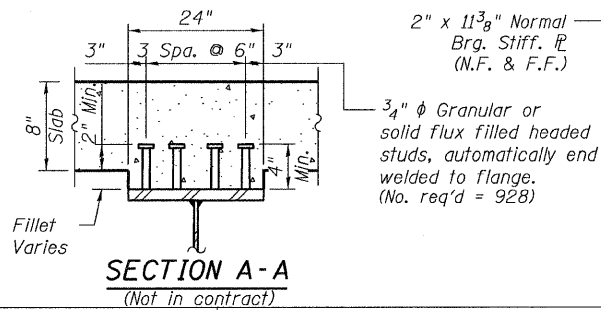


STATE OF ILLINOIS
DEPARTMENT OF TRANSPORTATION



NOTES:

1. For Top of Web Elevations see Sheet 40.
2. For Bearing stiffener and connection plate details see Sheets 77 thru 93.
3. For Field Splice detail, see Sheet 92.
4. F.C.M. denotes Fracture Critical Member.
5. F.C. denotes Fracture Critical Material, AASHTO Zone II.
6. N.F. denotes Near Face.
7. F.F. denotes Far Face.
8. Girder G22 shall not be cambered.



GIRDERS G22 - ELEVATION (F.C.M.)

(Looking West)

**GIRDERS G22- ELEVATION
CENTRAL/I-55
STRUCTURE NO. 016-0724**

TYLIN INTERNATIONAL	DESIGNED - JMA	REVISIONS	
	CHECKED - AMD,	NAME	DATE
	DRAWN - JMA		
	CHECKED - AMD,		
	DATE - 08/02/10		

SHEET NO. 47 137 SHEETS	F.A.I RTE.	SECTION	COUNTY	TOTAL SHEETS	SHEET NO.
	55	0711.2R & 1011.1BR	COOK	200	77
	CONTRACT NO. 60L39				
FED. ROAD DIST. NO. 1 ILLINOIS FED. AID PROJECT					