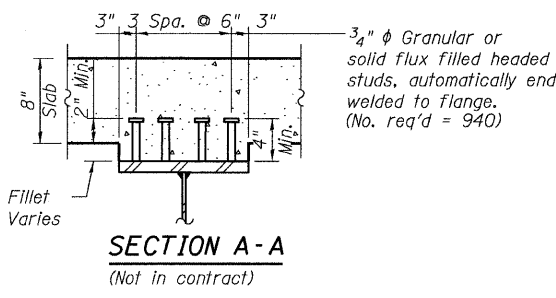
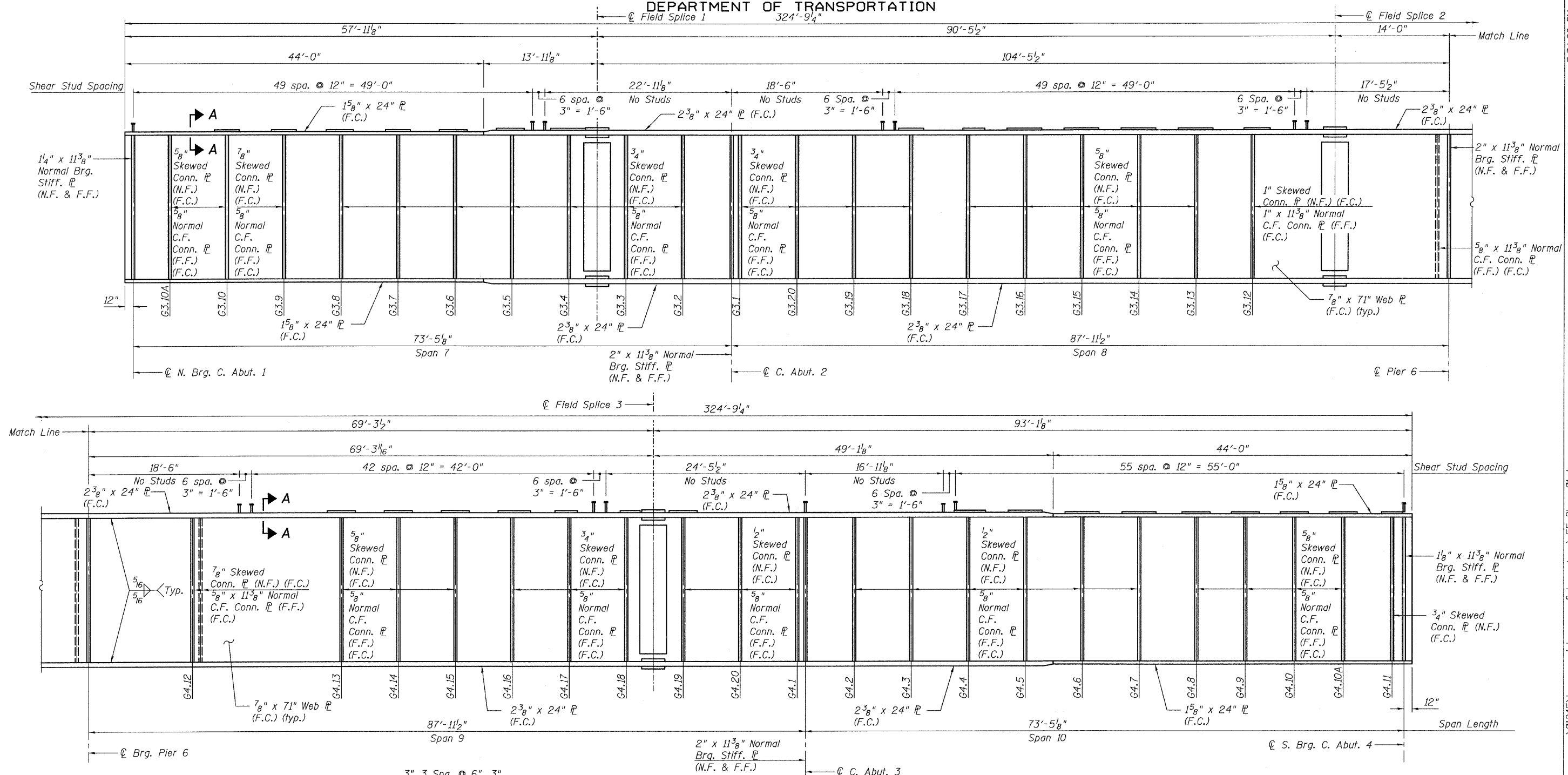


STATE OF ILLINOIS
DEPARTMENT OF TRANSPORTATION



GIRDER G1 - ELEVATION (F.C.M.)
(Looking West)

GIRDER G1 - ELEVATION
CENTRAL/I-55
STRUCTURE NO. 016-0724

- NOTES:**
1. For Top of Web Elevations, see Sheet 40.
 2. For Bearing stiffener and connection plate details see Sheet 53.
 3. For Field Splice detail, see Sheet 52.
 4. F.C.M. denotes Fracture Critical Member.
 5. F.C. denotes Fracture Critical material, AASHTO Zone II.
 6. N.F. denotes Near Face.
 7. F.F. denotes Far Face.
 8. Girder G1 shall not be cambered.

TYLIN INTERNATIONAL	DESIGNED - JMA	REVISIONS		SHEET NO. 46 137 SHEETS	F.A.I RTE. 55	SECTION 0711.2R & 1011.1BR	COUNTY COOK	TOTAL SHEETS 200	SHEET NO. 76	
	CHECKED - AMD,	NAME	DATE							CONTRACT NO. 60L39
	DRAWN - JMA									
	CHECKED - AMD,									
	DATE - 08/02/10									
					FED. ROAD DIST. NO. 1 ILLINOIS FED. AID PROJECT					

p:\013415\beam and bearing fabrication\155c2\beam01.dgn 5/10/13 5:04:36 PM