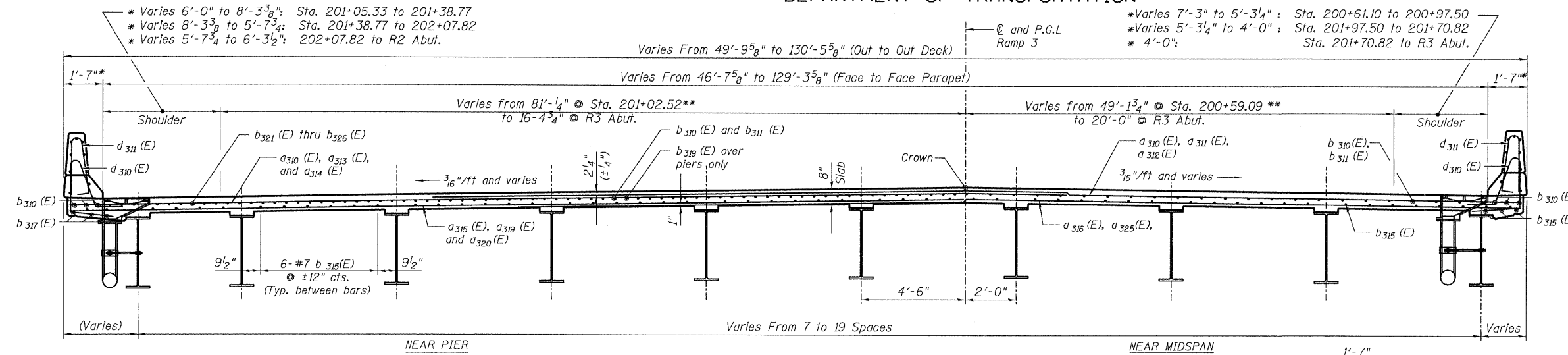


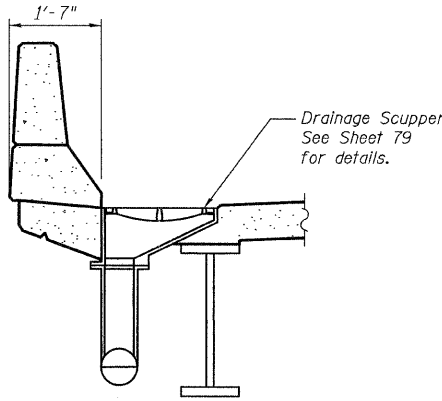
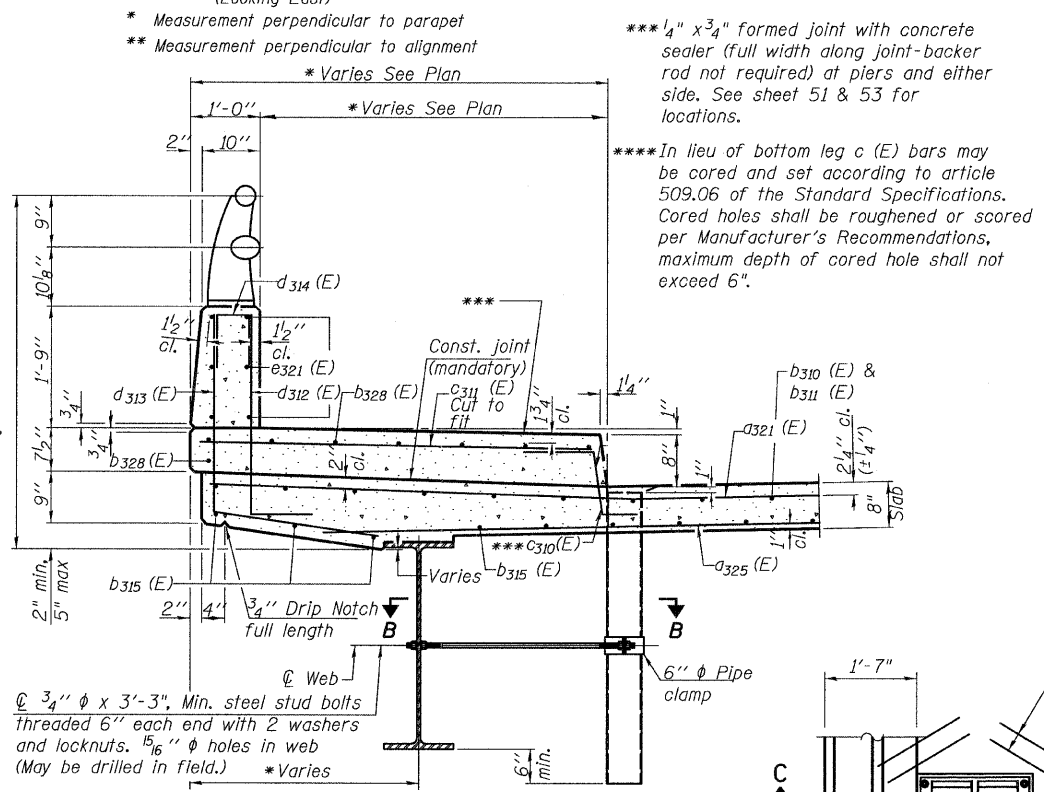
STATE OF ILLINOIS
DEPARTMENT OF TRANSPORTATION

BILL OF MATERIAL

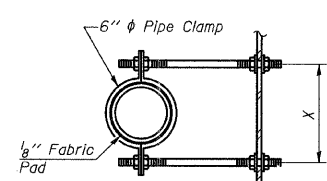


Bar	No.	Size	Length (ft)	Shape
a 310 (E)	296	#5	25'-6"	
a 311 (E)	440	#5	29'-0"	
a 312 (E)	31	#5	28'-0"	
a 313 (E)	58	#5	21'-8"	
a 314 (E)	70	#5	38'-8"	
a 315 (E)	228	#5	20'-5"	
a 316 (E)	240	#5	30'-7"	
a 317 (E)	216	#5	25'-4"	
a 318 (E)	32	#5	28'-11"	
a 319 (E)	41	#5	22'-0"	
a 320 (E)	58	#5	42'-0"	
a 321 (E)	139	#6	6'-6"	
a 322 (E)	84	#6	24'-6"	
a 323 (E)	26	#6	6'-6"	
a 324 (E)	65	#6	20'-0"	
a 325 (E)	102	#5	28'-8"	
a 326 (E)	32	#5	2'-0"	

SECTION A-A
(Looking East)

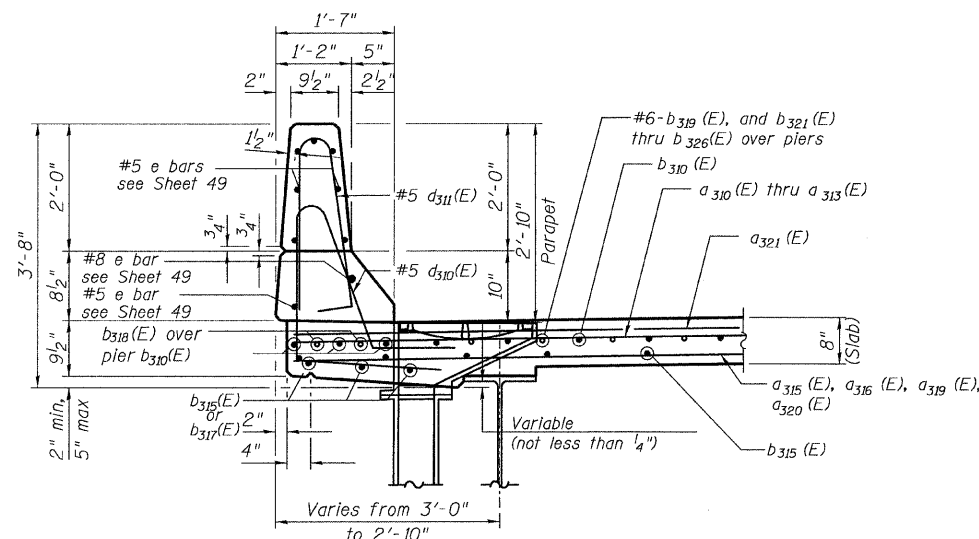


SECTION C-C

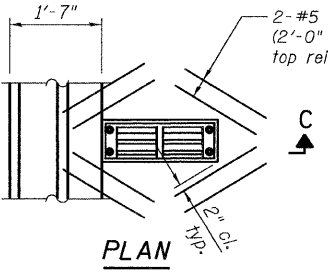
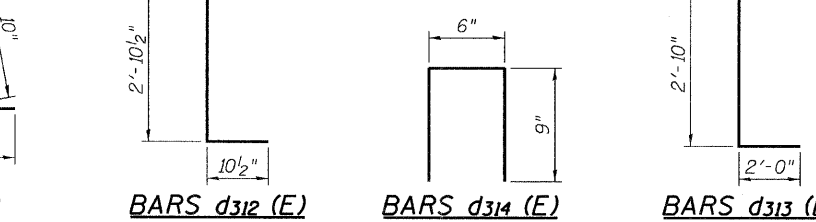


SECTION B-B

SECTION THRU PARAPET
(Looking East)



SECTION THRU SIDEWALK



BILL OF MATERIAL

Material	Unit	Quantity
Reinforcement Bars, Epoxy Coated	LB	97,600
Concrete	CU YD	398.4
Superstructure	CU YD	398.4
Bridge Deck Grooving	SQ YD	1,213
Protective Coat	SQ YD	1,536

CROSS SECTION & DETAILS

RAMP 3 FLARE
STRUCTURE NO. 016-0724

NOTES:

1. Reinforcement bars designated (E) shall be epoxy coated.
2. Bars indicated thus "47x7-#5" etc. indicates 47 lines of bars with 7 lengths per line.
3. For location of Section A-A, see Sheets.
4. Work this sheet with Sheets.
5. All deck construction joints shall be bonded construction joints.

BARS c310 (E)

BARS d312 (E)

BARS d314 (E)

BARS d313 (E)

TYLIN INTERNATIONAL

DESIGNED -	REVISIONS
CHECKED - AMD,	NAME DATE
DRAWN - EMK	
CHECKED - AMD,	
DATE - 08/02/10	

SHEET NO. 33	F.A.I. RTE.	SECTION	COUNTY	TOTAL SHEETS	SHEET NO.
137 SHEETS	55	0711.2R & 1011.1BR	COOK	200	63
			CONTRACT NO. 60L39		
FED. ROAD DIST. NO. 1 ILLINOIS FED. AID PROJECT					

p:\01345\beam and bearing fabrication\15513decksec.dgn 8/5/2010 2:42:00 PM