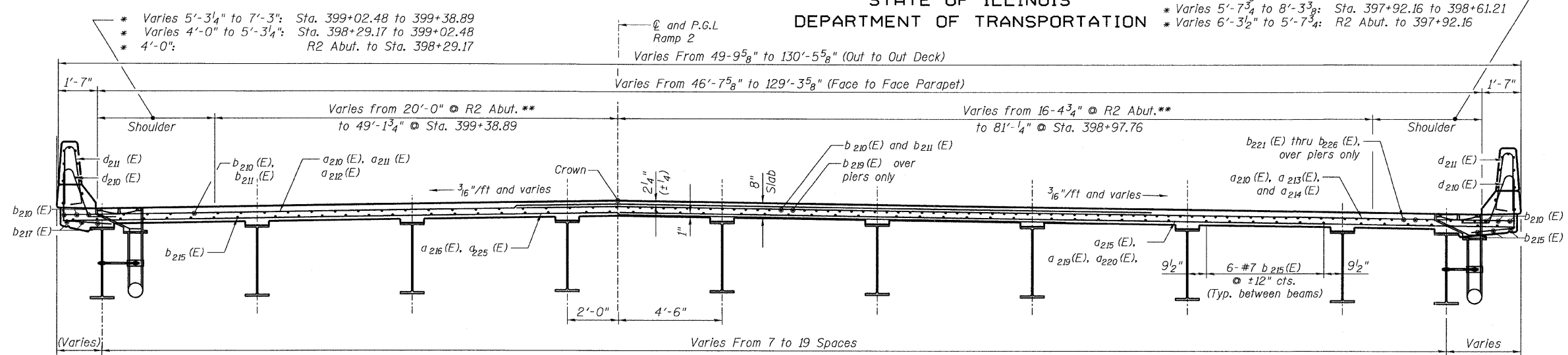


STATE OF ILLINOIS
DEPARTMENT OF TRANSPORTATION

* Varies 8'-3 3/8" to 6'-0": Sta. 398+61.21 to 398+94.66
 * Varies 5'-7 3/4" to 8'-3 3/8": Sta. 397+92.16 to 398+61.21
 * Varies 6'-3 1/2" to 5'-7 3/4": R2 Abut. to 397+92.16



NEAR MIDSPAN

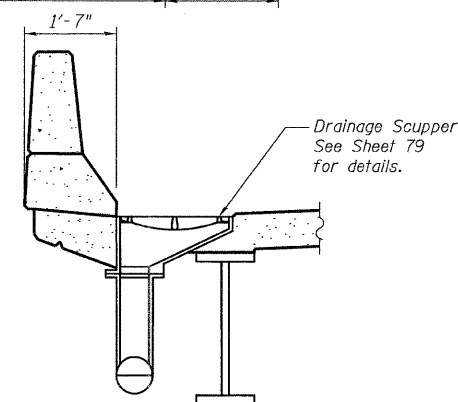
SECTION A-A

NEAR PIER

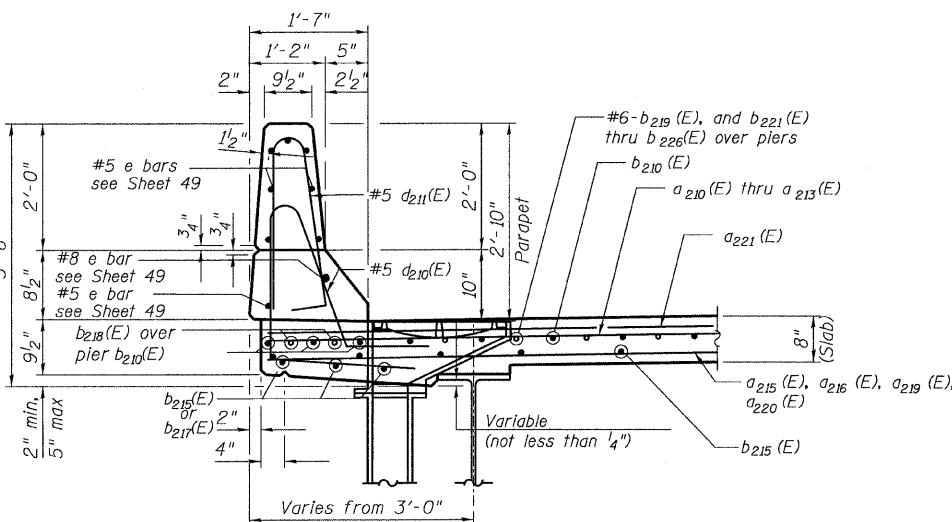
(Looking East)
 * Measurement perpendicular to parapet
 ** Measurement perpendicular to alignment

*** 1/4" x 3/4" formed joint with concrete sealer (full width along joint-backer rod not required) at piers and either side. See sheet 47, 49 for locations.

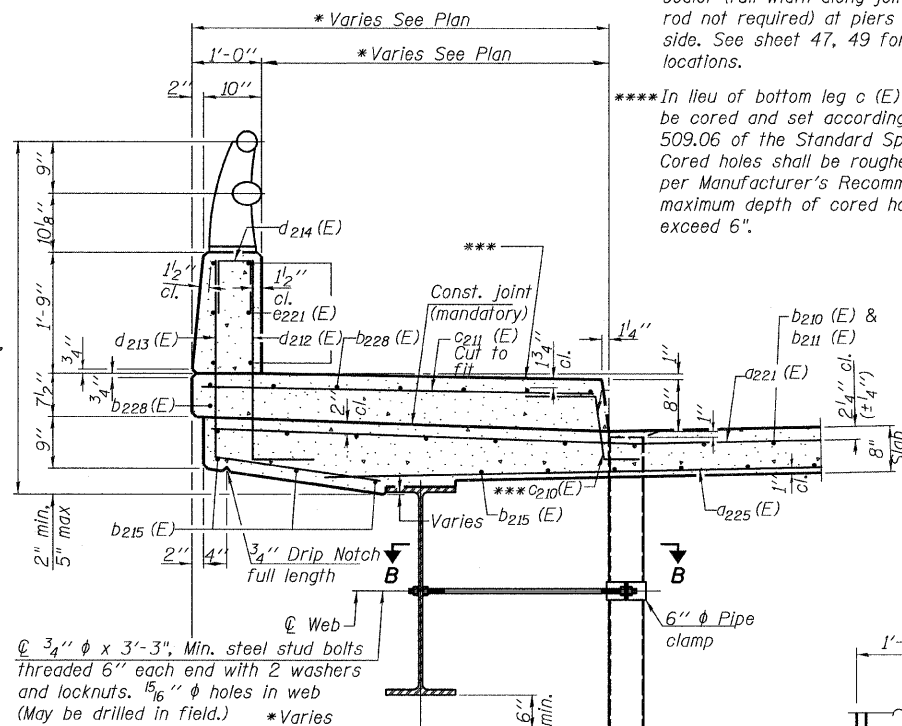
**** In lieu of bottom leg c (E) bars may be cored and set according to article 509.06 of the Standard Specifications. Cored holes shall be roughened or scored per Manufacturer's Recommendations, maximum depth of cored hole shall not exceed 6".



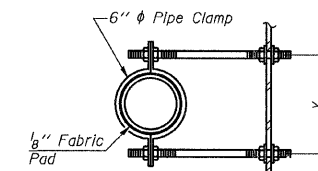
SECTION C-C



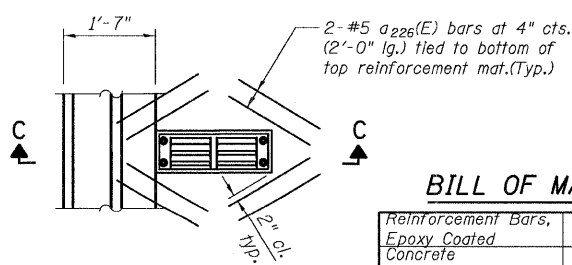
SECTION THRU PARAPET
(Looking East)



SECTION THRU SIDEWALK



SECTION B-B



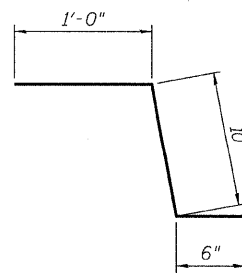
PLAN
DRAINAGE SCUPPER
DS-12

BILL OF MATERIAL

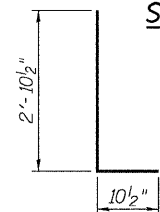
Reinforcement Bars, Epoxy Coated	LB	97,600
Concrete Superstructure	CU YD	398.4
Bridge Deck Grooving	SQ YD	1,213
Protective Coat	SQ YD	1,536

NOTES:

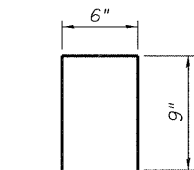
1. Reinforcement bars designated (E) shall be epoxy coated.
2. Bars indicated thus "47x7-#5" etc. indicates 47 lines of bars with 7 lengths per line.
3. For location of Section A-A, see Sheet.
4. Work this sheet with Sheets.
5. All deck construction joints shall be bonded construction joints.



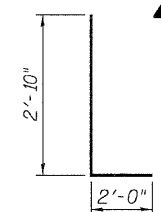
BARS c210 (E)



BARS d212 (E)



BARS d214 (E)



BARS d213 (E)

BILL OF MATERIAL

Bar	No.	Size	Length (ft)	Shape
a210 (E)	296	#5	25'-6"	—
a211 (E)	440	#5	29'-0"	—
a212 (E)	31	#5	28'-0"	—
a213 (E)	58	#5	21'-8"	—
a214 (E)	70	#5	38'-8"	—
a215 (E)	228	#5	20'-5"	—
a216 (E)	240	#5	30'-7"	—
a217 (E)	216	#5	25'-4"	—
a218 (E)	32	#5	28'-11"	—
a219 (E)	41	#5	22'-0"	—
a220 (E)	58	#5	42'-0"	—
a221 (E)	139	#6	6'-6"	—
a222 (E)	84	#6	24'-6"	—
a223 (E)	26	#6	6'-6"	—
a224 (E)	65	#6	20'-0"	—
a225 (E)	102	#5	28'-8"	—
a226 (E)	32	#5	2'-0"	—
b210 (E)	410	#5	27'-3"	—
b211 (E)	10	#5	22'-6"	—
b212 (E)	33	#5	30'-0"	—
b213 (E)	10	#5	31'-6"	—
b214 (E)	5	#5	28'-5"	—
b215 (E)	391	#5	30'-10"	—
b216 (E)	4	#5	23'-6"	—
b217 (E)	24	#5	25'-2"	—
b218 (E)	2	#6	30'-0"	—
b219 (E)	60	#5	30'-0"	—
b220 (E)	1	#6	30'-8"	—
b221 (E)	1	#6	28'-2"	—
b222 (E)	1	#6	25'-10"	—
b223 (E)	1	#6	23'-7"	—
b224 (E)	1	#6	21'-4"	—
b225 (E)	1	#6	19'-3"	—
b226 (E)	1	#6	17'-3"	—
b227 (E)	2	#6	30'-0"	—
b228 (E)	15	#5	24'-8"	—
c210 (E)	66	#5	2'-4"	—
c211 (E)	66	#5	5'-8"	—
d210 (E)	304	#5	7'-2"	—
d211 (E)	304	#5	6'-10"	—
d212 (E)	54	#6	3'-9"	—
d213 (E)	54	#4	4'-10"	—
d214 (E)	10	#5	2'-0"	—
e210 (E)	4	#5	33'-4"	—
e211 (E)	2	#8	34'-10"	—
e212 (E)	24	#5	15'-5"	—
e213 (E)	8	#5	15'-2"	—
e214 (E)	1	#8	15'-2"	—
e215 (E)	8	#5	16'-8"	—
e216 (E)	1	#8	16'-8"	—
e217 (E)	8	#5	25'-4"	—
e218 (E)	1	#8	25'-4"	—
e219 (E)	6	#5	13'-7"	—
e220 (E)	6	#5	11'-10"	—
e221 (E)	18	#5	16'-8"	—
e222 (E)	2	#8	27'-4"	—
e223 (E)	4	#5	25'-4"	—
e224 (E)	18	#5	15'-6"	—
e225 (E)	8	#5	16'-8"	—
e226 (E)	1	#8	16'-8"	—
e227 (E)	1	#8	15'-2"	—
e228 (E)	8	#5	15'-2"	—
e229 (E)	3	#8	29'-6"	—
e230 (E)	6	#5	25'-5"	—
e231 (E)	24	#5	16'-2"	—
x200 (E)	53	#5	4'-2"	—
x201 (E)	53	#5	5'-1"	—

**CROSS SECTIONS & DETAILS
RAMP 2 FLARE
STRUCTURE NO. 016-0724**

TYLIN INTERNATIONAL

DESIGNED	JE, PK	REVISIONS	
CHECKED	AMD,	NAME	DATE
DRAWN	EMK		
CHECKED	AMD,		
DATE	08/02/10		

SHEET NO. 32	F.A.I. RTE.	SECTION	COUNTY	TOTAL SHEETS	SHEET NO.
137 SHEETS	55	0711.2R & 1011.1BR	COOK	200	62
CONTRACT NO. 60L39					
FED. ROAD DIST. NO. 1 ILLINOIS FED. AID PROJECT					

8/5/2010 p:\01345\beam and bearing fabrication\5512\decks\ec.dgn 2:41:59 PM