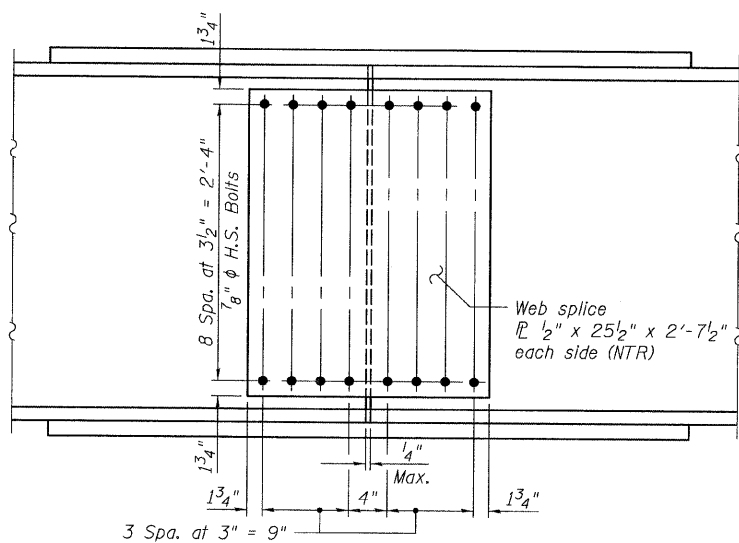
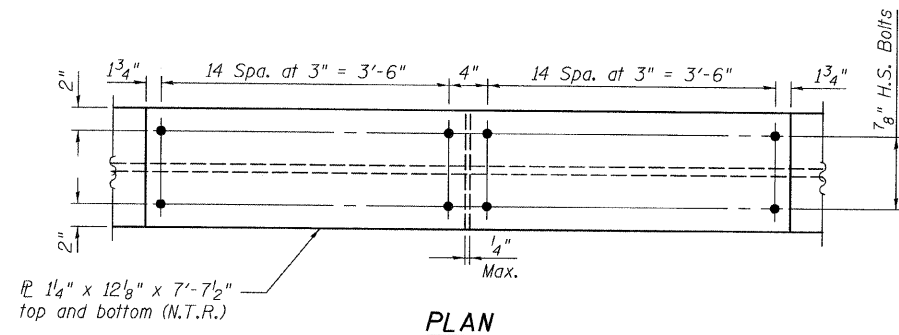


STATE OF ILLINOIS  
DEPARTMENT OF TRANSPORTATION



SPLICE DETAIL  
F.S. 1 THRU F.S. 4

Load carrying components designated "NTR" shall conform to the Supplemental Requirements for Notch Toughness, Zone 2.

FRAMING DETAILS 4  
FIELD SPLICES  
STRUCTURE NO. 016-3241

**TYLIN** INTERNATIONAL

DESIGNED - JMA	REVISIONS	
CHECKED - AMD,	NAME	DATE
DRAWN - JMA		
CHECKED - AMD,		
DATE - 08/02/10		

SHEET NO. 22 26 SHEETS	F.A.I RTE.	SECTION	COUNTY	TOTAL SHEETS	SHEET NO.
	55	0711.2R & 1011.1BR	COOK	200	26
			CONTRACT NO. 60L39		
FED. ROAD DIST. NO. 1 ILLINOIS FED. AID PROJECT					