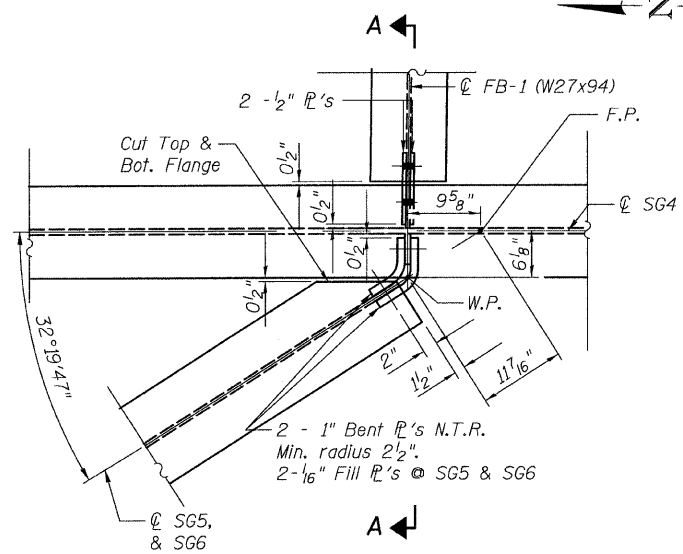
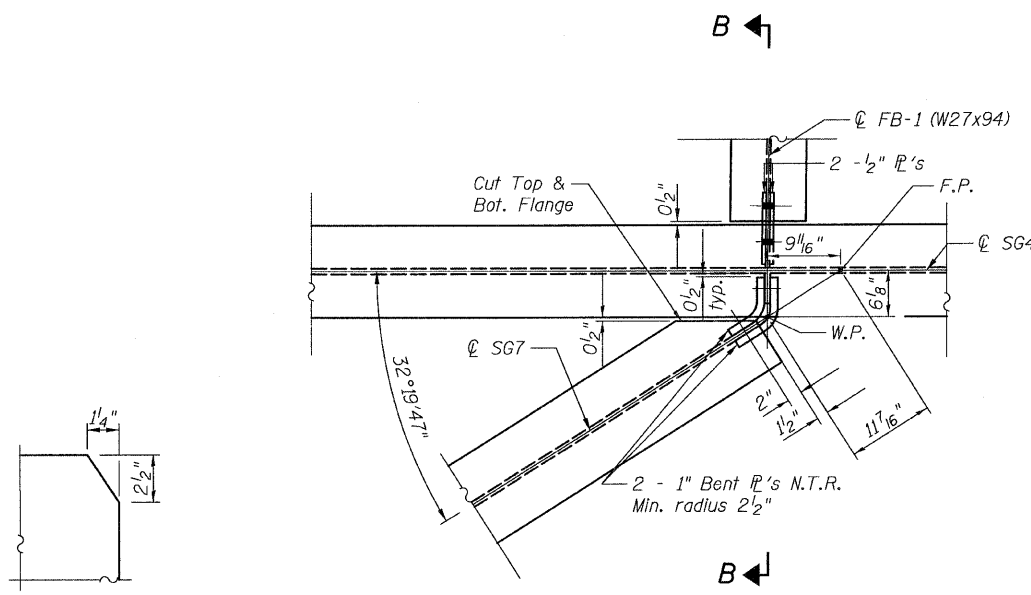


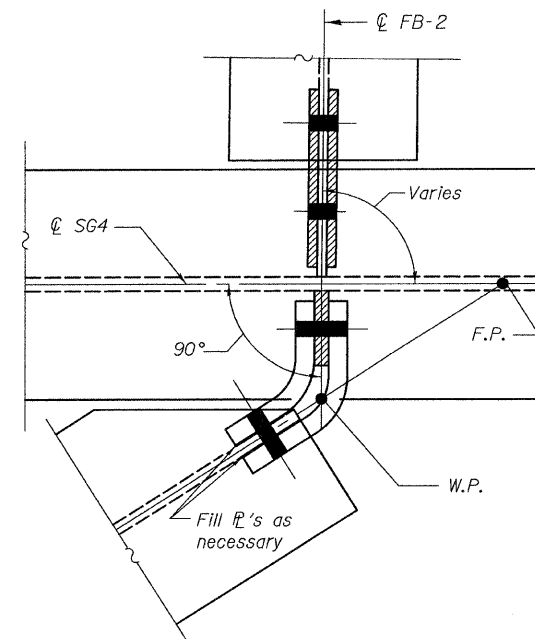
STATE OF ILLINOIS
DEPARTMENT OF TRANSPORTATION



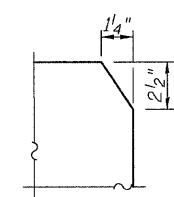
DETAIL 3



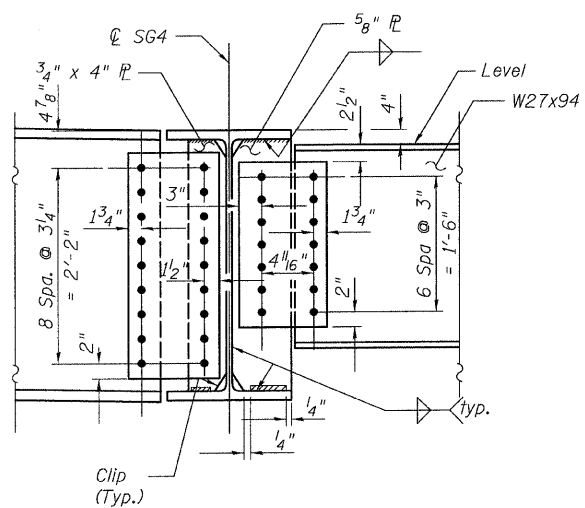
DETAIL 4



PLAN-FRAMED CONNECTION

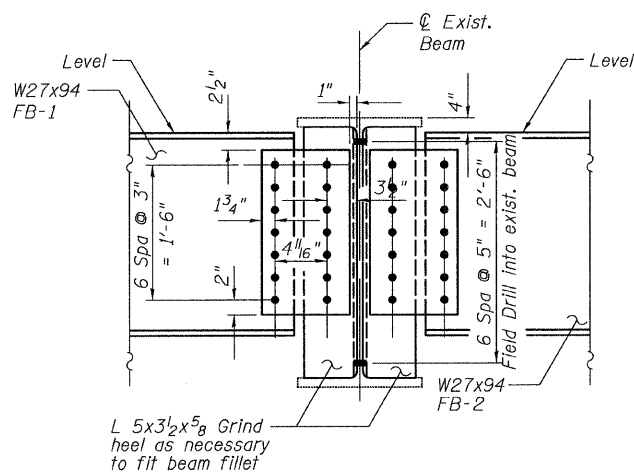


TYPICAL CLIPPING
DETAIL



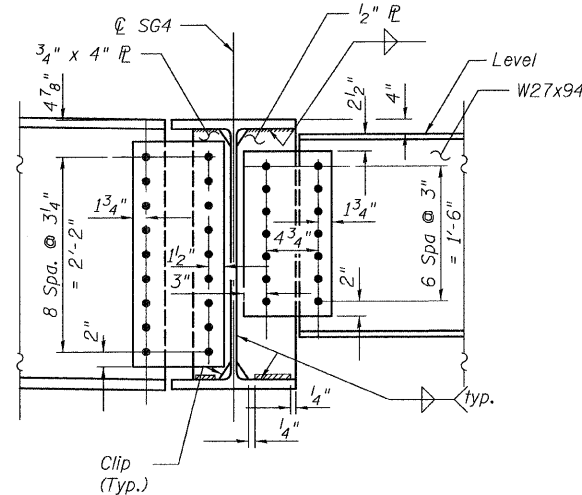
SECTION A-A

All bolts shall be 7/8" ϕ . Holes shall be 15/16" ϕ



AT EXISTING BEAM

(G1 shown, G2 similar with exception of W27x94 on 1 side only)



SECTION B-B

All bolts shall be 7/8" ϕ . Holes shall be 15/16" ϕ

NOTES:

- Structural Steel shall conform to the requirement of AASHTO M270 Grade 50.
- F.P. denotes Framing Point
- Load carrying components designated "NTR" shall conform to the Supplemental Requirements for Notch Toughness, Zone 2.
- All Fillet Welds shall be 5/16".

FRAMING DETAILS 3
CONNECTIONS - WEST
STRUCTURE NO. 016-3241

TYLIN INTERNATIONAL

DESIGNED - JMA	REVISIONS	
	NAME	DATE
CHECKED - AMD,		
DRAWN - JMA		
CHECKED - AMD,		
DATE - 08/02/10		

SHEET NO. 21 26 SHEETS	F.A.I RTE.	SECTION	COUNTY	TOTAL SHEETS	SHEET NO.
	55	0711.2R & 1011.1BR	COOK	200	25
FED. ROAD DIST. NO. 1 ILLINOIS			FED. AID PROJECT		