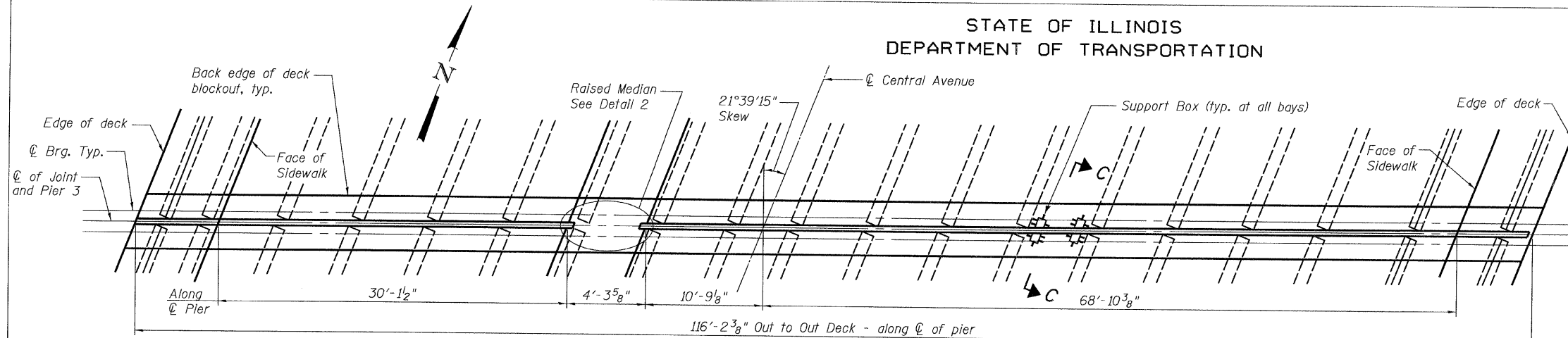
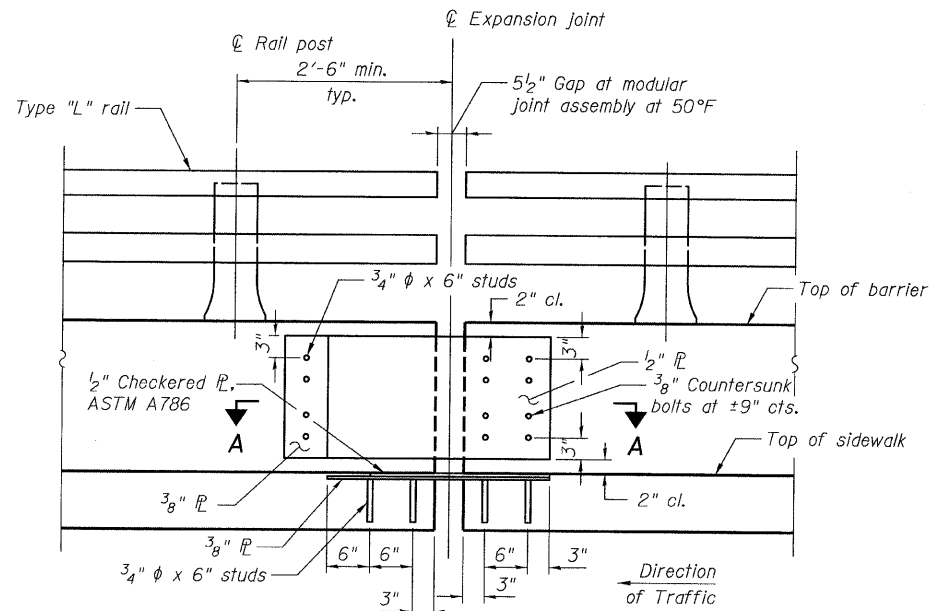


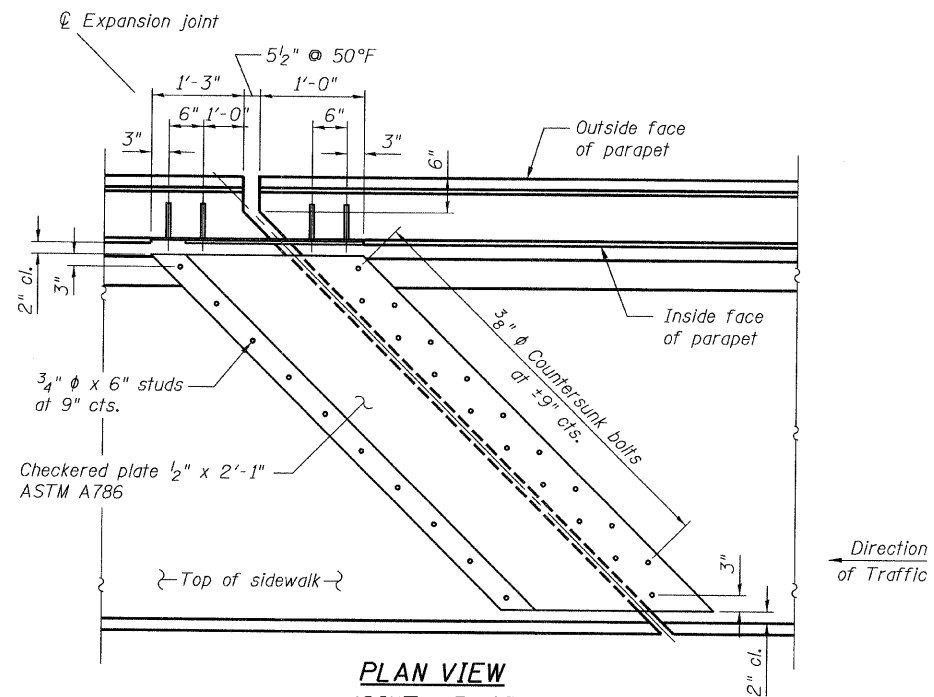
STATE OF ILLINOIS
DEPARTMENT OF TRANSPORTATION



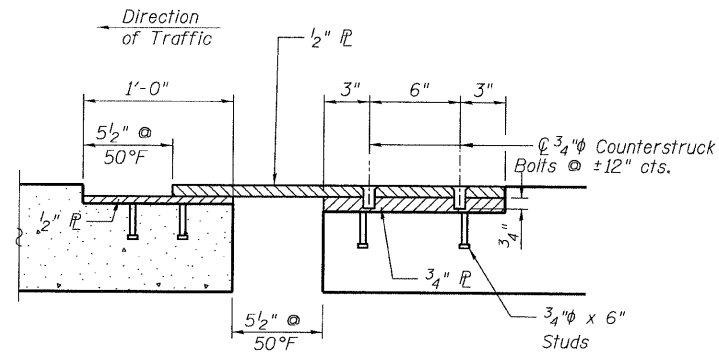
PLAN



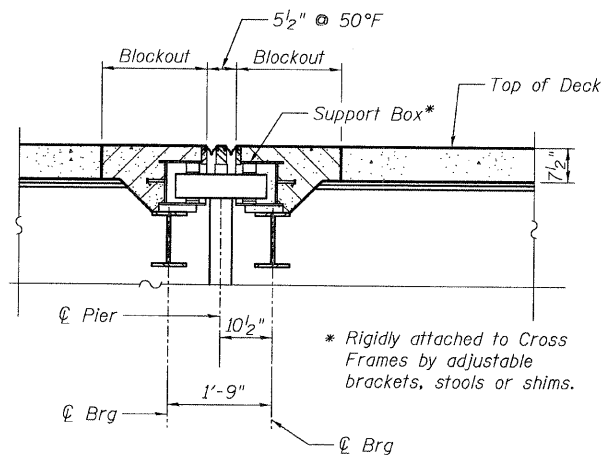
SECTION B-B



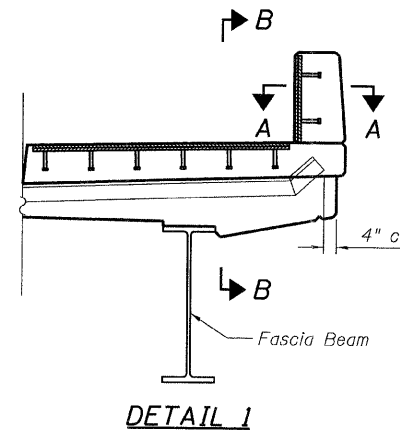
PLAN VIEW
JOINT ARMOR



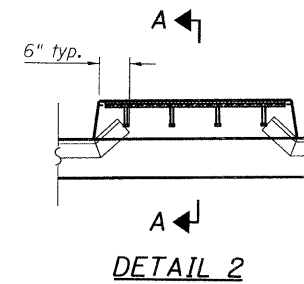
SECTION A-A



SECTION C-C



DETAIL 1



DETAIL 2

Note:
Girders not shown.

GENERAL NOTES

1. The expansion joint device shall be a prefabricated modular assembly with multiple support bars and separator beams, providing a continuous seal across the deck.
2. All splices of center beams and edge beams shall be full penetration welds. Uprun splices may be partial penetration welds.
3. Joint shall be fabricated according to the manufacturer's recommendations and as shown in the Special Provisions for Modular Expansion Joint and as approved by the Engineer.
4. Joint openings shall be adjusted according to Article 520.04 of the Standard Specifications when the concrete blackout is cast at an ambient temperature other than 50° F.
5. Joint shall be fabricated to conform to the roadway profile and cross slope.
6. The cost of furnishing all material for the sliding plate assemblies at the parapets and median barrier shall be included with Furnishing Modular Expansion Joints. The sliding plate assembly shall be galvanized.
7. Countersunk bolts and concrete inserts shall be Hot-Dipped Galvanized according to AASHTO M232.
8. Barrier plates to be AASHTO M270, Grade 36 and to be Hot-Dipped Galvanized according to AASHTO M111 after fabrication.
9. 3/4" x 6" studs shall be according to Article 1006.32 of the Standard Specifications.
10. All anchor studs shall be included with Furnishing Modular Expansion Joint (unless noted otherwise).
11. Modular expansion joint shall be assembled in their final relative position with the ends in place for shop inspection and acceptance.

BILL OF MATERIAL

ITEM	UNIT	TOTAL
Furnishing Modular Expansion Joint 6"	Foot	99

SOUTH APPROACH MODULAR EXPANSION
JOINT DETAILS AT PIER 3
STRUCTURE NO. 016-3241

TYLIN INTERNATIONAL	DESIGNED - MRB	REVISIONS		SHEET NO. 12	F.A.I. RTE. 55	SECTION 0711.2R & 1011.1BR	COUNTY COOK	TOTAL SHEETS 200	SHEET NO. 16
	CHECKED - AMD,	NAME	DATE						
	DRAWN - MRB								
	CHECKED - AMD,								
	DATE - 08/02/10			26 SHEETS	CONTRACT NO. 60L39		FED. ROAD DIST. NO. 1 ILLINOIS FED. AID PROJECT		

p:\01345\beam and bearing_fabrication\155c\lex.tbl.dgn 8/2/2010 2:41:42 PM