

STATE OF ILLINOIS
DEPARTMENT OF TRANSPORTATION
DIVISION OF HIGHWAYS

PROPOSED
HIGHWAY PLANS

FAI-55 - INTERSTATE 55 AT CENTRAL AVENUE
SECTION 1011.1B-I-1
PROJECT : ACIM-055-7(258)286
BEAM AND BEARING FABRICATION
COOK COUNTY
C-91-691-10

F.A.I. RTE.	SECTION	COUNTY	TOTAL SHEETS	SHEET NO.
55	1011.1B-I-1	COOK	200	1
ILLINOIS			CONTRACT NO. 60L39	

* 200 + 9 = 209

D-91-328-00



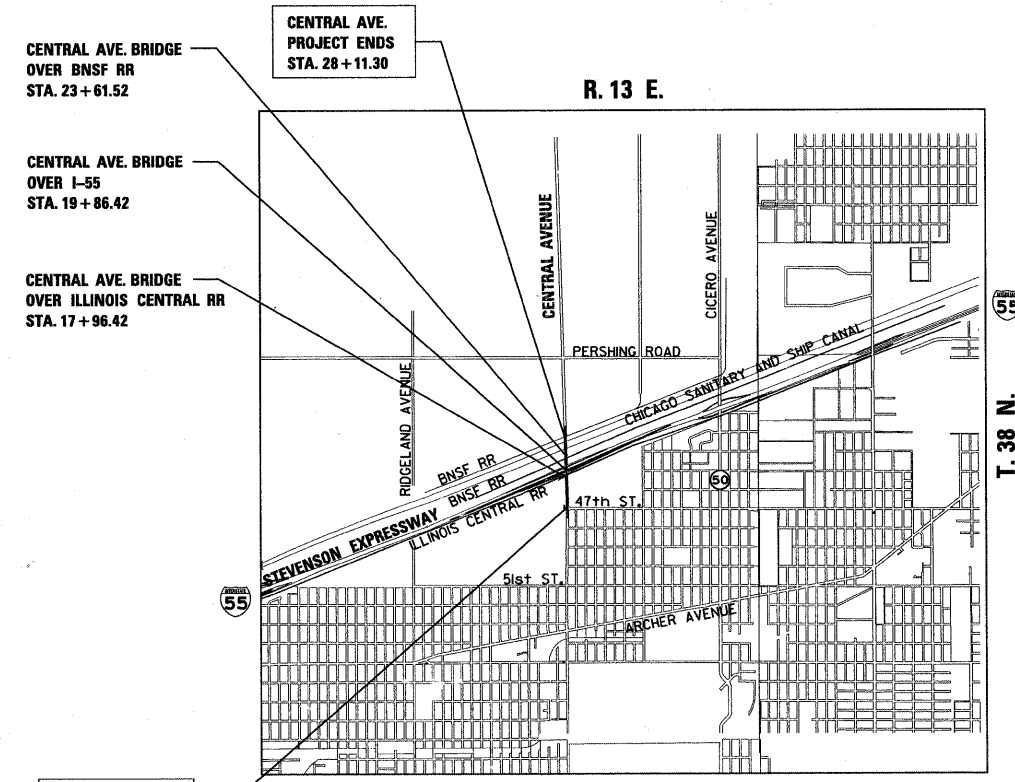
PROJECT LOCATED IN VILLAGE OF FOREST VIEW

FOR INDEX OF SHEETS, SEE SHEET NO. 2

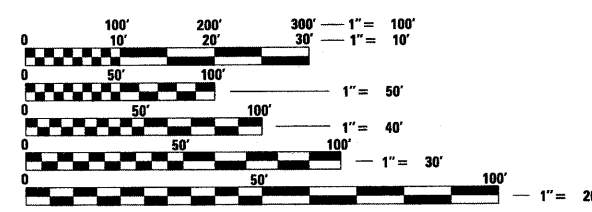
DESIGN DESIGNATION

CENTRAL AVENUE: 35,000 (20) PRINCIPAL ARTERIAL 5.0 (PCC-20)
I-55 (RAMPS): 14,000 (20) INTERSTATE FREEWAY 5.0 (PCC-20)

	ADT (1996)	ADT (2020)	DESIGN SPEED	POSTED SPEED
CENTRAL AVENUE: SOUTH	32,200	35,000	45MPH	30MPH
OVER I-55	27,300	29,000	45MPH	35MPH
NORTH	21,900	24,000	45MPH	45MPH
INTERSTATE I-55: EASTBOUND	70,600	71,000	70MPH	55MPH
WESTBOUND	71,500	72,000	70MPH	55MPH
RAMPS: ENTERING I-55	12,000	14,000	60MPH	35MPH
EXITING I-55	12,000	14,000	30MPH	30MPH



GROSS LENGTH = 1812.3 FT. = 0.34 MILE
NET LENGTH = 1812.3 FT. = 0.34 MILE



FULL SIZE PLANS HAVE BEEN PREPARED USING STANDARD ENGINEERING SCALES. REDUCED SIZED PLANS WILL NOT CONFORM TO STANDARD SCALES. IN MAKING MEASUREMENTS ON REDUCED PLANS, THE ABOVE SCALES MAY BE USED.

J.U.L.I.E.
JOINT UTILITY LOCATION INFORMATION FOR EXCAVATION
1-800-892-0123
OR 811

PROJECT MANAGER: R. SHAH 847-705-4555

CONTRACT NO. 60L39

Signature: Anna M. Dukas
Date: 5/10/10
Professional Engineer Seal: ANNA M. DUKAS, S.E. IL Lic. No. 081-005698, Expires 11-30-2010

STATE OF ILLINOIS
DEPARTMENT OF TRANSPORTATION
DIVISION OF HIGHWAYS
SUBMITTED MAY 12, 20 10
Diane M. O'Keefe
DEPUTY DIRECTOR OF HIGHWAYS, REGION ENGINEER
August 13 20 10
Scott E. Stitt
acting ENGINEER OF DESIGN AND ENVIRONMENT
August 13 20 10
Christine M. Reed
DIRECTOR OF HIGHWAYS, CHIEF ENGINEER

PRINTED BY THE AUTHORITY
OF THE STATE OF ILLINOIS