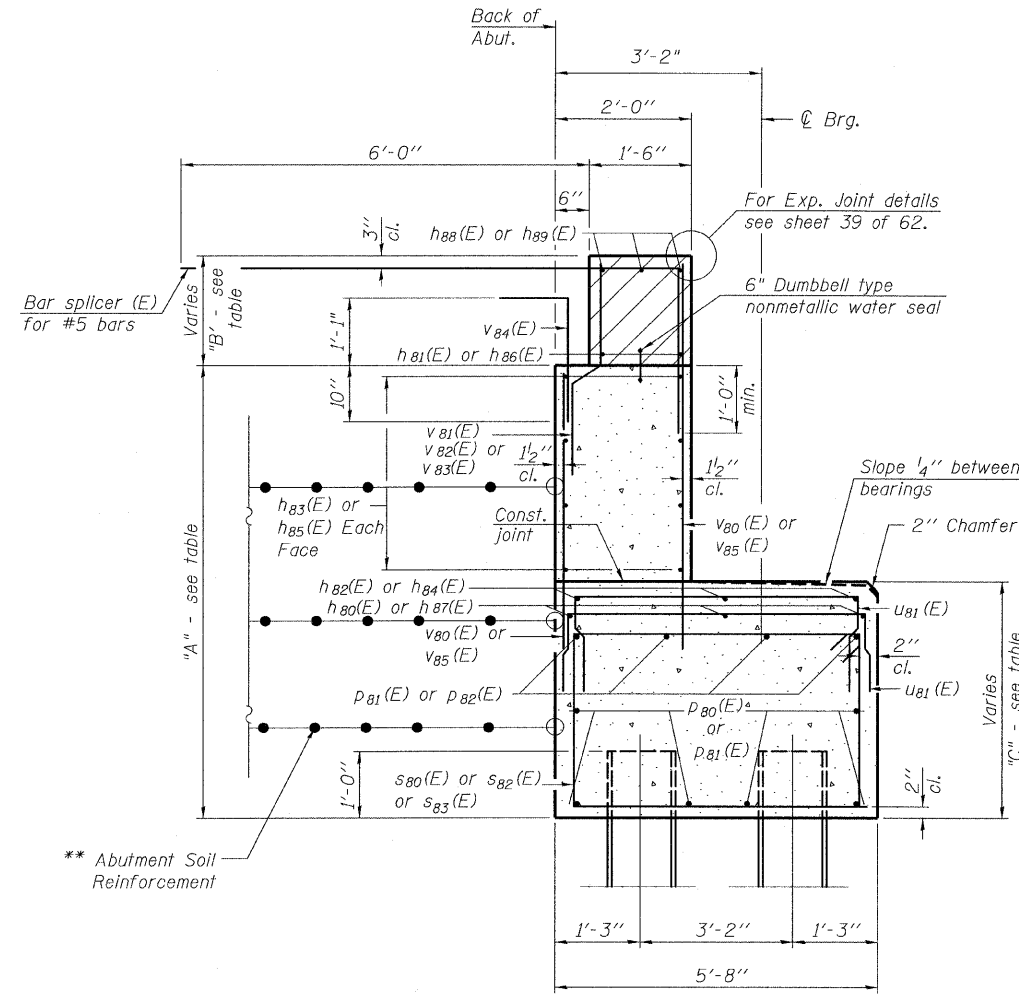


STATE OF ILLINOIS  
DEPARTMENT OF TRANSPORTATION

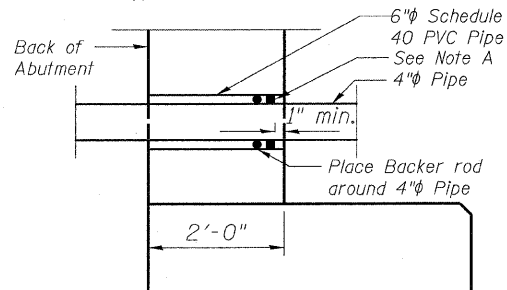
WEST ABUTMENT  
BILL OF MATERIAL



SEC. THRU ABUT.

Note A:  
Non-staining gray one component non-sag elastomeric gun grade polyurethane sealant meeting the requirements of ASTM C-920, Type S, Grade NS, Class 25 rod.

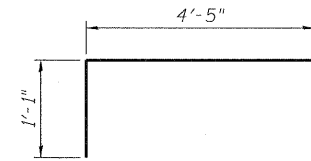
\*\* The M.S.E. wall supplier shall design the abutment soil reinforcement to resist a horizontal force of 2 kips/ft. Contractor shall coordinate abutment construction with construction of MSE retaining wall.



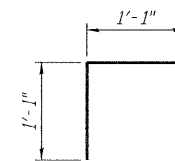
DETAIL B

Shown for 6" pipe.  
Use 10" Schedule 40 PVC pipe for 8" drainage pipe.

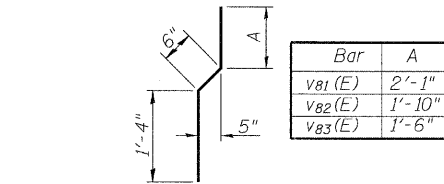
Note: Backer Rod, 6" PVC Pipe & sealant shall be included in the cost of Concrete Structures.



BAR b103(E)



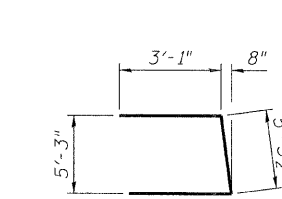
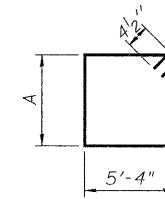
BAR v84(E)



BAR v81(E), v82(E) & v83(E)

Bar	A
s80(E)	3'-2"
s82(E)	3'-5"
s83(E)	3'-9"

BARS s80(E), s82(E) & s83(E) BAR u80(E)



BARS u81(E)

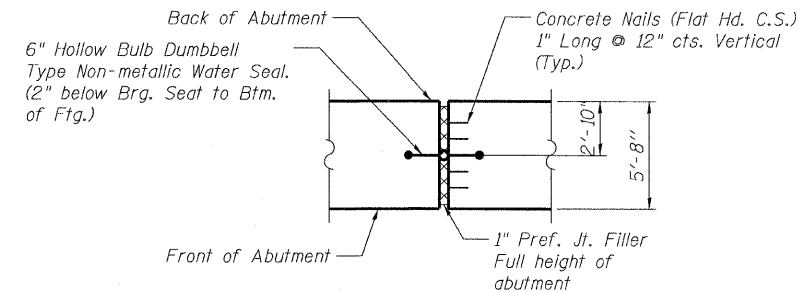
Location	A	B	C
C-D Road A	6'-9 <sup>3</sup> / <sub>4</sub> "	1'-4" to 1'-8 <sup>1</sup> / <sub>2</sub> "	4'-0 <sup>5</sup> / <sub>8</sub> " to 4'-4"
NB I-57	6'-4 <sup>3</sup> / <sub>4</sub> "	1'-4" to 2'-0 <sup>5</sup> / <sub>8</sub> "	3'-7 <sup>5</sup> / <sub>8</sub> " to 4'-3 <sup>3</sup> / <sub>8</sub> "
SB I-57	6'-3"	1'-4" to 2'-3"	3'-6" to 4'-4"

Bar	No.	Size	Length	Shape
b103(E)	8	#6	6'-4"	Γ
h80(E)	6	#5	29'-9"	—
h81(E)	8	#6	39'-9"	—
h82(E)	6	#5	18'-6"	—
h83(E)	32	#5	39'-10"	—
h84(E)	3	#5	18'-2"	—
h85(E)	16	#5	22'-9"	—
h86(E)	4	#6	22'-8"	—
h87(E)	3	#5	43'-7"	—
h88(E)	6	#6	23'-9"	—
h89(E)	12	#6	40'-1"	—
p80(E)	24	#7	40'-6"	—
p81(E)	10	#7	42'-3"	—
p82(E)	16	#7	40'-10"	—
s80(E)	132	#4	17'-9"	□
s82(E)	131	#4	18'-3"	□
s83(E)	72	#4	18'-11"	□
u80(E)	24	#6	8'-5"	U
u81(E)	158	#4	7'-4"	U
v80(E)	154	#5	5'-9"	—
v81(E)	77	#4	3'-11"	—
v82(E)	77	#4	3'-8"	—
v83(E)	44	#4	3'-4"	—
v84(E)	198	#5	3'-10"	—
v85(E)	242	#5	5'-11"	—
Structure Excavation		Cu. Yd.	4,010	
Concrete Structures		Cu. Yd.	206.1	
Reinforcement Bars, Epoxy Coated		Pound	16,870	
Furnishing Steel Piles, HP12x53		Foot	2,040	⚠
Pile Shoes		Each	52	
Driving Piles		Foot	2,040	⚠
Test Pile Steel HP12x53		Each	1	
Concrete Sealer		Sq. Ft.	1,650	

For details of Bar Splicers, see sheet 55 of 62.  
For details of piles, see sheet 56 of 62.

PILE DATA

Type: HP12x53 with Piles Shoes  
Nominal Required Bearing: 219 kips  
Factored Resistance Available: 230 kips  
Est. Length: 39.7 ft  
No. Production Piles: 51  
No. Test Piles: 1



SECTION A-A

Cost of Water Seal included in the cost of Concrete Structures.

WEST ABUTMENT DETAILS  
S.N. 016-1252

TYLIN INTERNATIONAL

DESIGNED -	DY	REVISIONS	
CHECKED -	AD,LS	NAME	DATE
DRAWN -	DY,EI		
CHECKED -	LS,SP,PDF		
DATE -	03/18/10	Δ REVISED	05/24/10

SHEET NO. 46	F.A.I RTE.	SECTION	COUNTY	TOTAL SHEETS	SHEET NO.
62 SHEETS	57	141A.2B	COOK	516	359
			CONTRACT NO. 60J27		
FED. ROAD DIST. NO. 1 ILLINOIS FED. AID PROJECT					

P:\602540\57-294\STRUCTURAL\I-57-OVER-RAMP-B.N.I.incl.submittal\_03172010\0161252-60J27-046-W.ABUT-DTL.dwg 5/21/2010 2:22:45 PM