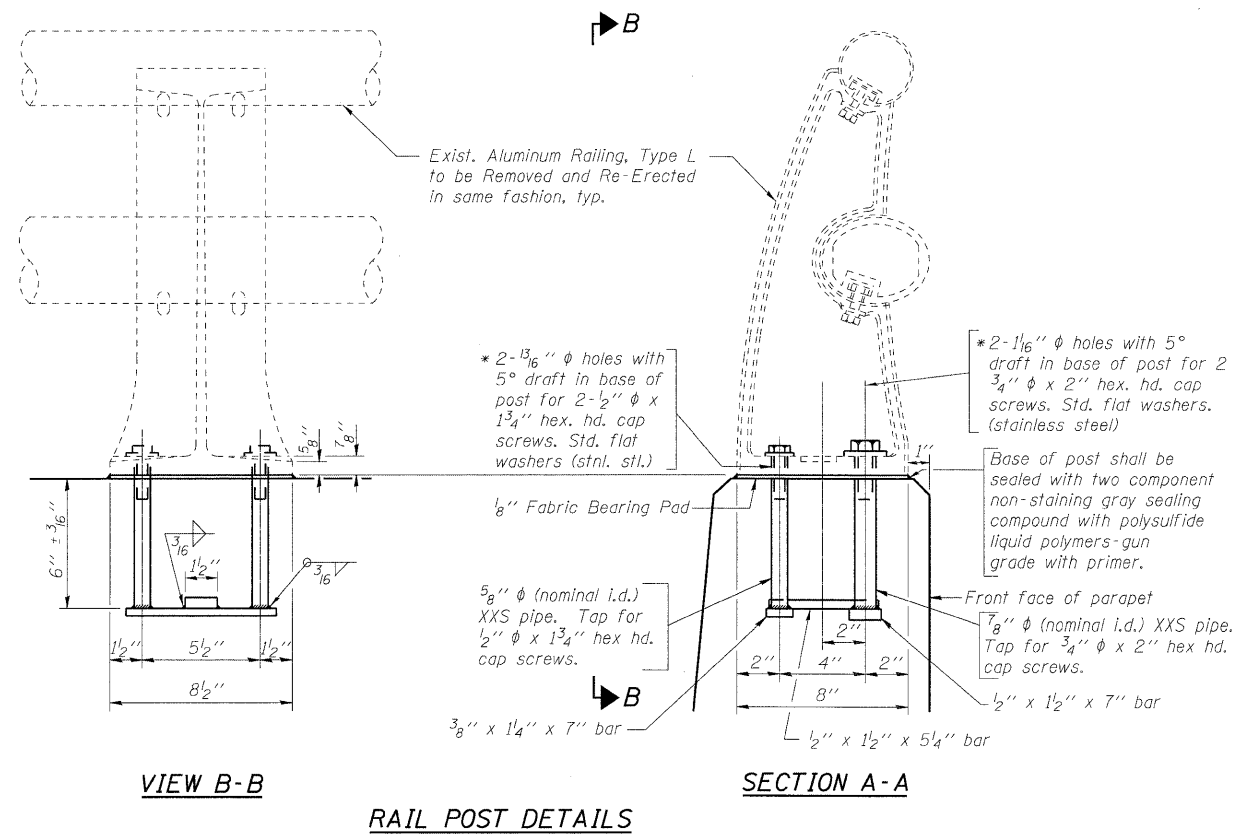
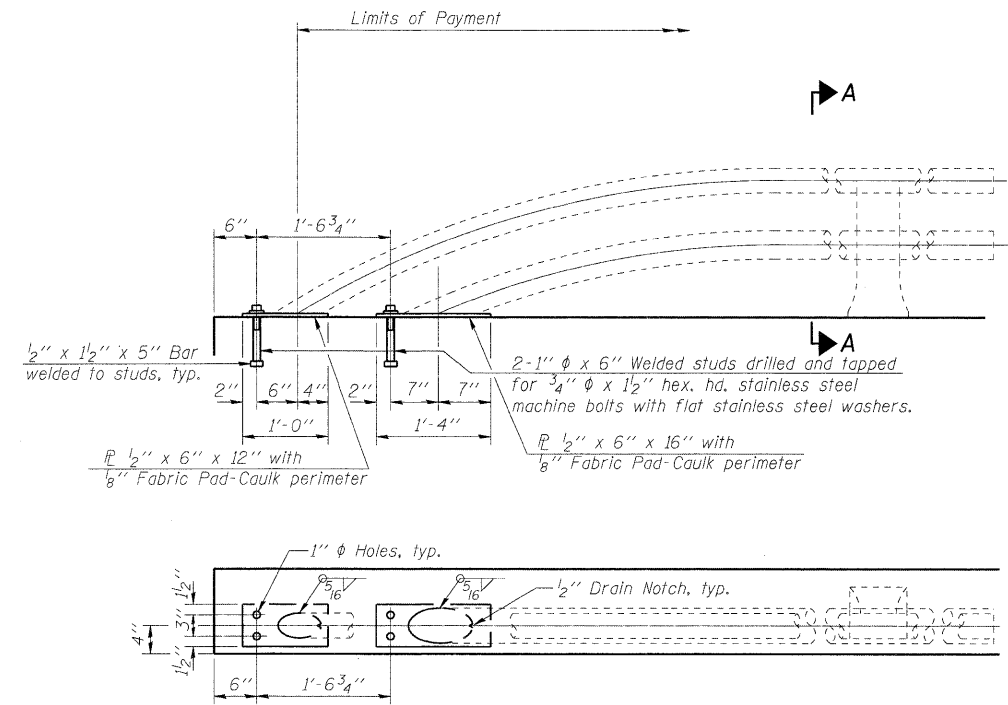


STATE OF ILLINOIS
DEPARTMENT OF TRANSPORTATION



* In lieu of the cast-in-place anchor device shown, the Contractor has the option of drilling and setting stainless steel anchor rods of the same diameter and grade as the specified cap screws according to Article 509.06 of the Standard Specifications. Embedment shall be according to the manufacturer's specifications.



VIEW B-B
RAIL POST DETAILS

SECTION A-A

RAIL TERMINAL SECTION

BILL OF MATERIAL

Item	Unit	Quantity
Removing and Re-Erecting Existing Railing	Foot	97

DESIGNED	SLV
CHECKED	DJB
DRAWN	SLV
CHECKED	DJB

LONGCO, INC.
CONSULTING ENGINEERS
1560 WALL ST, SUITE 222
NAPERVILLE, ILLINOIS 60563 PH: (630) 577-9100

RAILING DETAILS
STRUCTURE NO. 049-0152

SHEET NO. S10 OF S17 SHEETS	F.A.P. RTE.	SECTION	COUNTY	TOTAL SHEETS	SHEET NO.
	338	108 B-1	LAKE	40	22
D-91-289-09			CONTRACT NO. 60F92		
FED. ROAD DIST. NO. ILLINOIS FED. AID PROJECT					