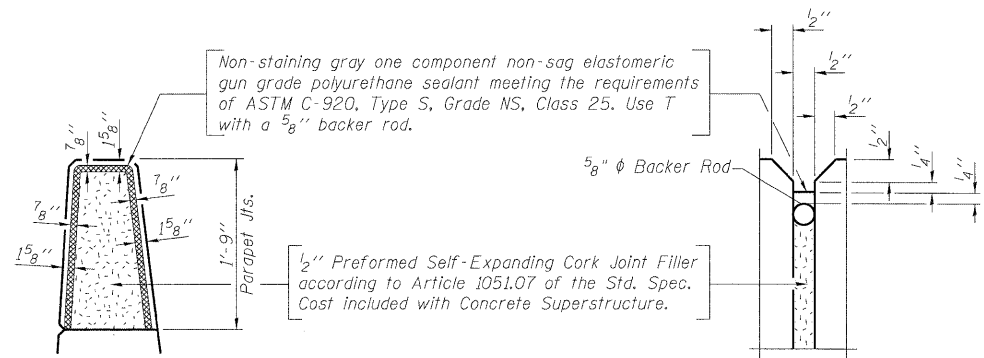


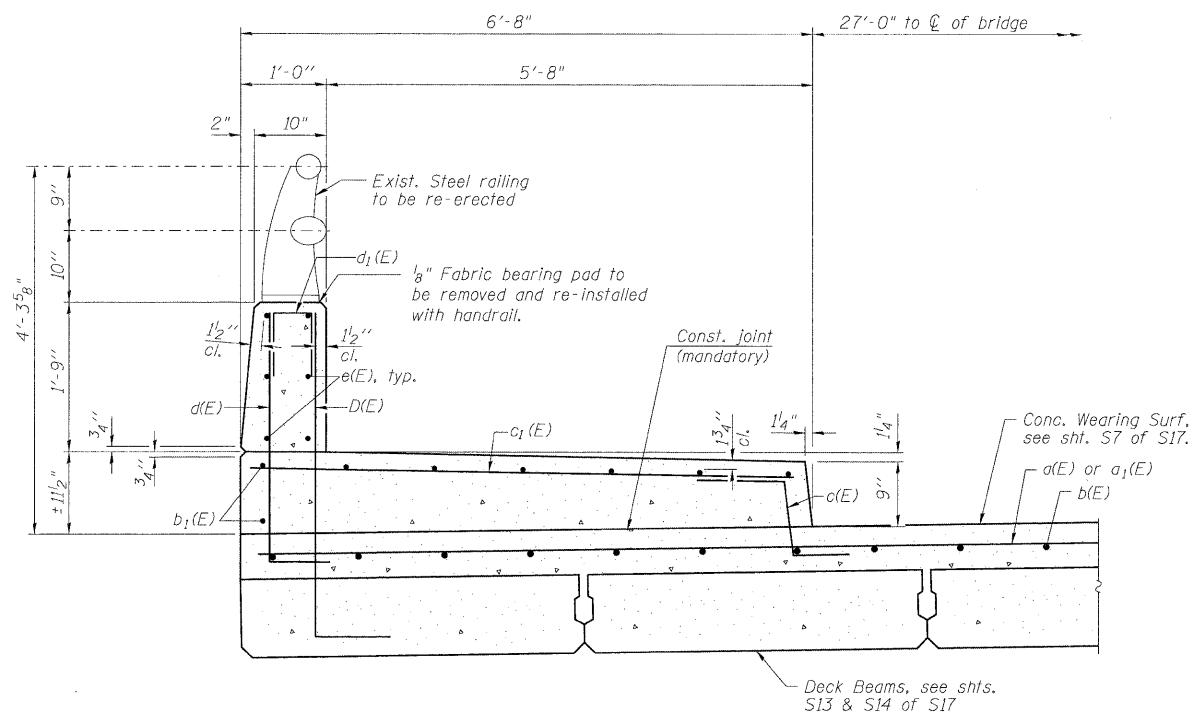
STATE OF ILLINOIS  
DEPARTMENT OF TRANSPORTATION



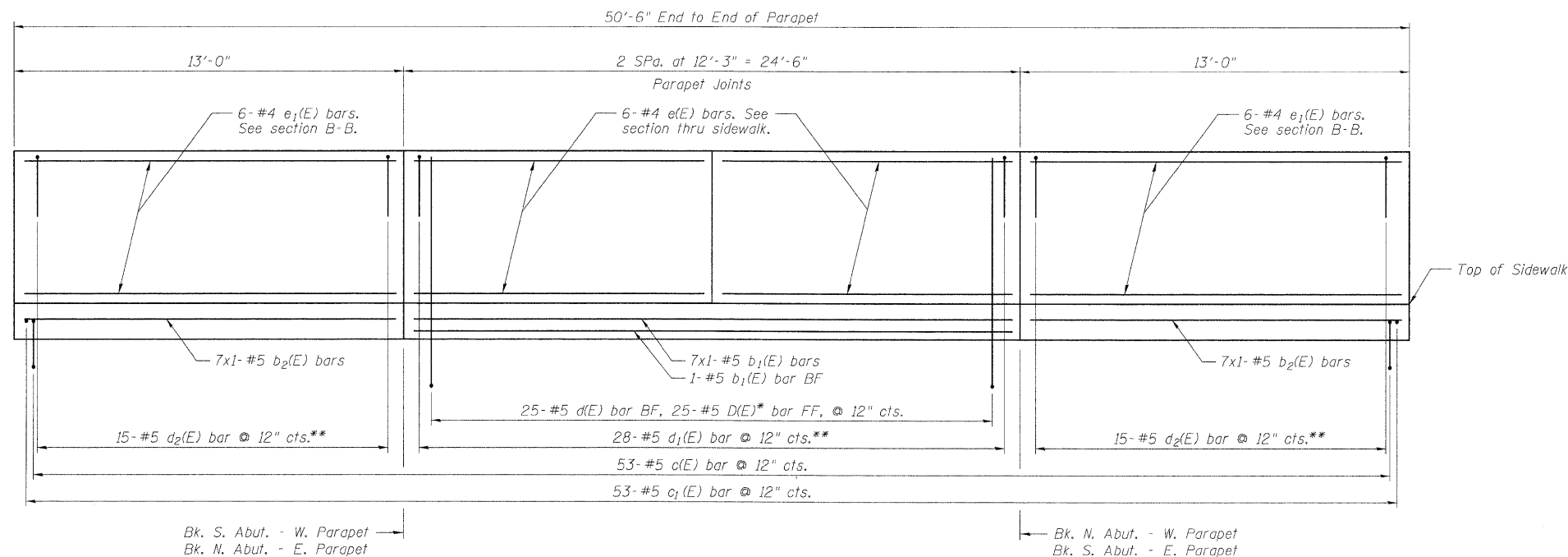
**PARAPET JOINT DETAILS**

**NOTES**

See sht. S9 of S17 for Sect B-B and Sidewalk & Parapet Plan.  
See sht. S7 of S17 for Bill of Material.  
Protective coat shall be applied to top and front face of parapet along with sidewalk.



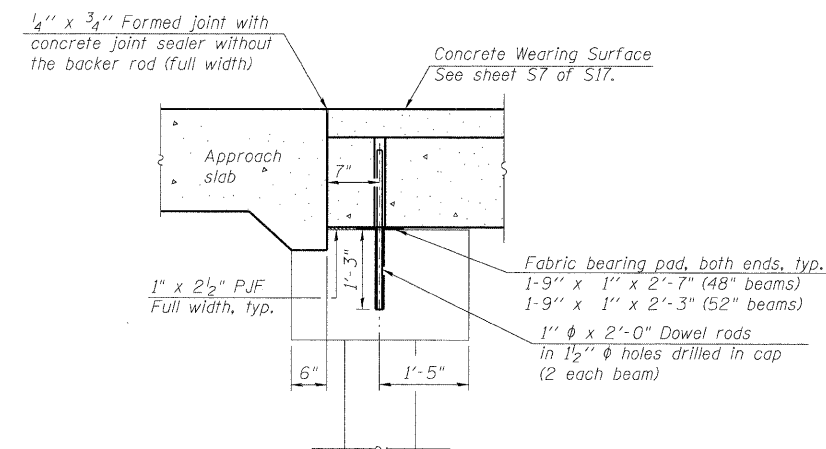
**SECTION THRU SIDEWALK**



**INSIDE PARAPET ELEVATION**

Bars indicated thus 7x1- #5, etc, indicates 7 lines of bars with 1 length per line.

\* D(E) bars cast in place in each outside beam. See sht S14 of S17 for details.  
\*\* Place two a<sub>1</sub>(E) or d<sub>2</sub>(E) bars under each bar post (included in total bars).



**SECTION THRU FIXED ABUTMENT**

**Notes:**

After beams have been erected, holes shall be drilled into substructure and anchor dowels placed. Dowel holes shall be filled with non-shrink grout to top of beam and allowed to cure min. 24 hrs. prior to grouting the shear keys.  
All horizontal dimensions are at right angles to beam ends. See sheet S13 & S14 of S17 for 52" and 48" beam bearing pad details.

DESIGNED -	SLV
CHECKED -	DJB
DRAWN -	SLV
CHECKED -	DJB

**LOXCO, INC.**  
CONSULTING ENGINEERS  
1560 WALL ST, SUITE 222  
NAPERVILLE, ILLINOIS 60563 PH: (630) 577-9100

**SUPERSTRUCTURE DETAILS  
STRUCTURE NO. 049-0152**

SHEET NO. SB OF S17 SHEETS	F.A.P. RTE. 338	SECTION 108 B-1	COUNTY LAKE	TOTAL SHEETS 40	SHEET NO. 20
	D-91-289-09		CONTRACT NO. 60F92		
FED. ROAD DIST. NO. _ ILLINOIS FED. AID PROJECT					