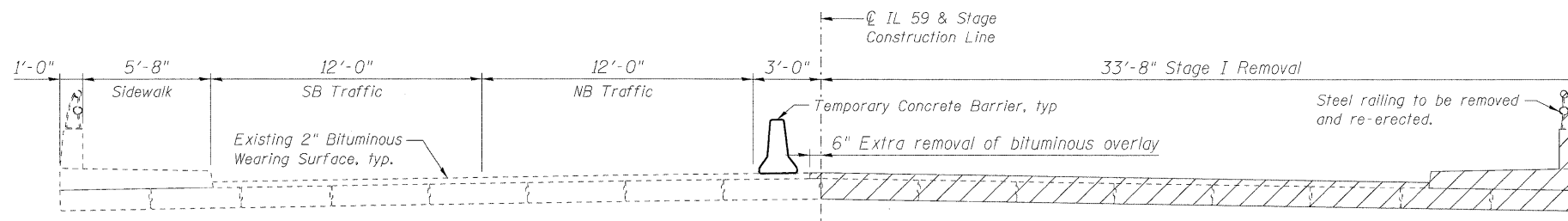
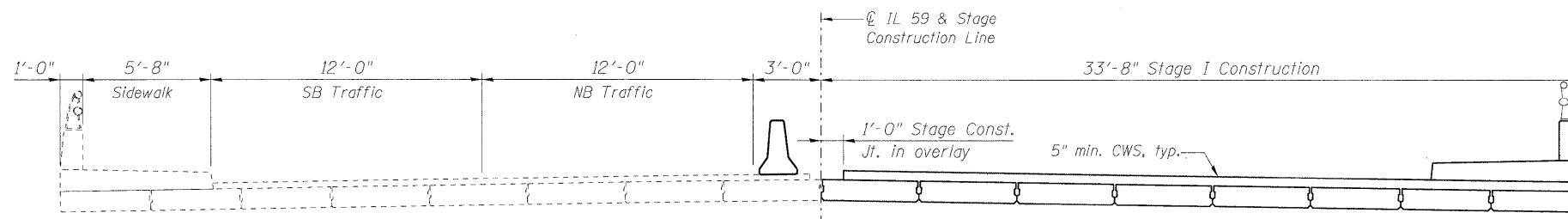


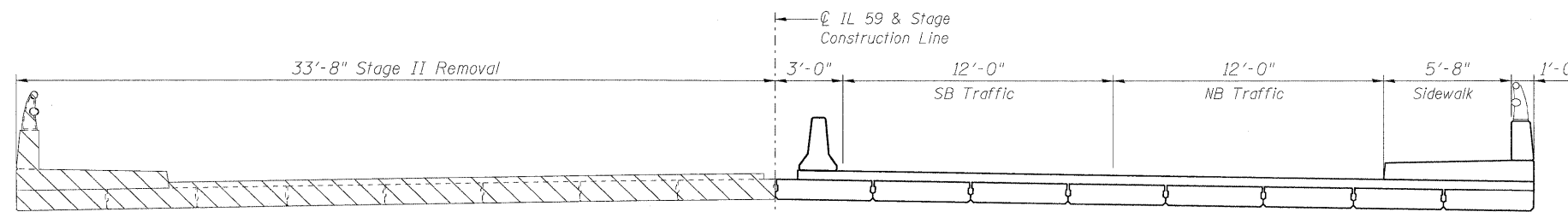
STATE OF ILLINOIS
DEPARTMENT OF TRANSPORTATION



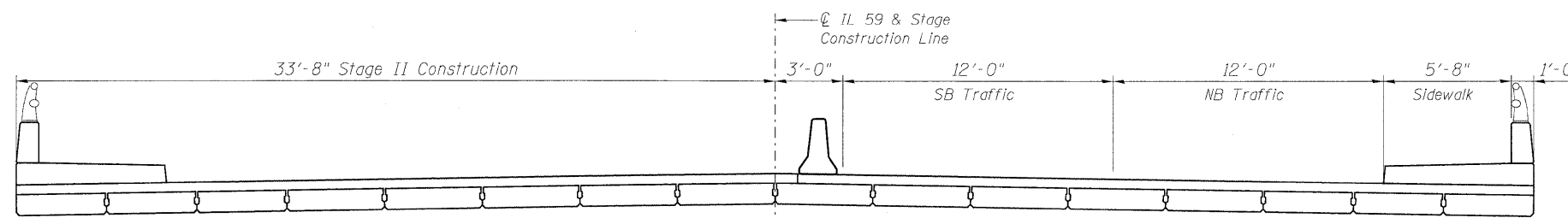
STAGE I REMOVAL



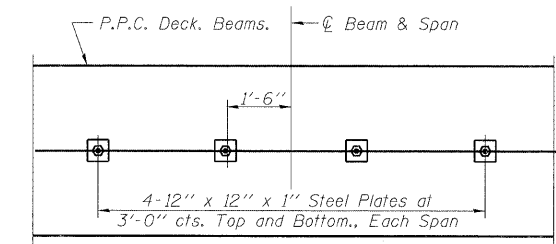
STAGE I CONSTRUCTION



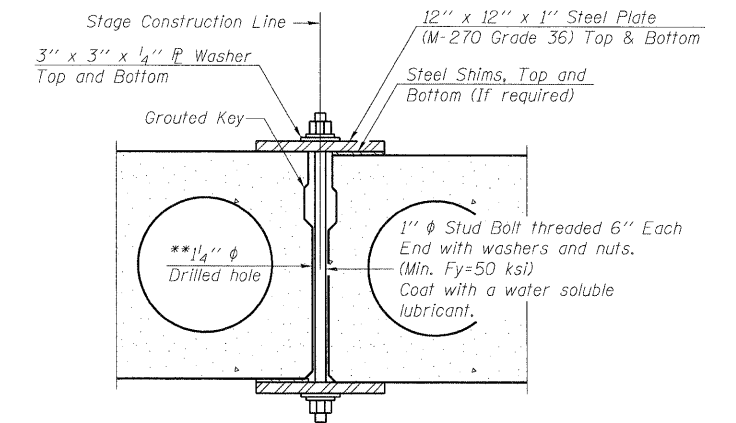
STAGE II REMOVAL



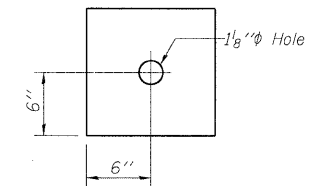
STAGE II CONSTRUCTION



PLAN



SECTION



CLAMPING PLATE

SHEAR KEY CLAMPING DETAILS AT STAGE CONST. JT.

Cost included with Precast Prestressed Concrete Deck Beams.

** As an alternate to the drilled holes, the Contractor may request the Fabricator to cast 2" diameter semi-circular recesses in the sides of each beam adjacent to the stage construction line. These recesses should align to form a hole at the appropriate locations for the clamping device bolts. If the Contractor elects to use this alternate, the details shall be identified on the shop drawings.

NOTES

All Cross Sections looking North.
Hatched area indicates Removal of Existing Superstructures.
Cost of removing existing bituminous wearing surface, parapet, and sidewalk are included with Removal of Existing Superstructures.
For quantity of Temporary Concrete Barrier see Roadway Plans.
For Temporary Concrete Barrier details see Sheet S4 of S17.

DESIGNED	-	SLV
CHECKED	-	DJB
DRAWN	-	SLV
CHECKED	-	DJB

LONGO, INC.
CONSULTING ENGINEERS
1560 WALL ST, SUITE 222
NAPERVILLE, ILLINOIS 60563 PH: (630) 577-9100

STAGE CONSTRUCTION DETAILS
STRUCTURE NO. 049-0152

SHEET NO. S3 OF S17 SHEETS	F.A.P. RTE.	SECTION	COUNTY	TOTAL SHEETS	SHEET NO.
	338	108 B-1	LAKE	40	15
D-91-289-09			CONTRACT NO. 60F92		
FED. ROAD DIST. NO. _ ILLINOIS FED. AID PROJECT					