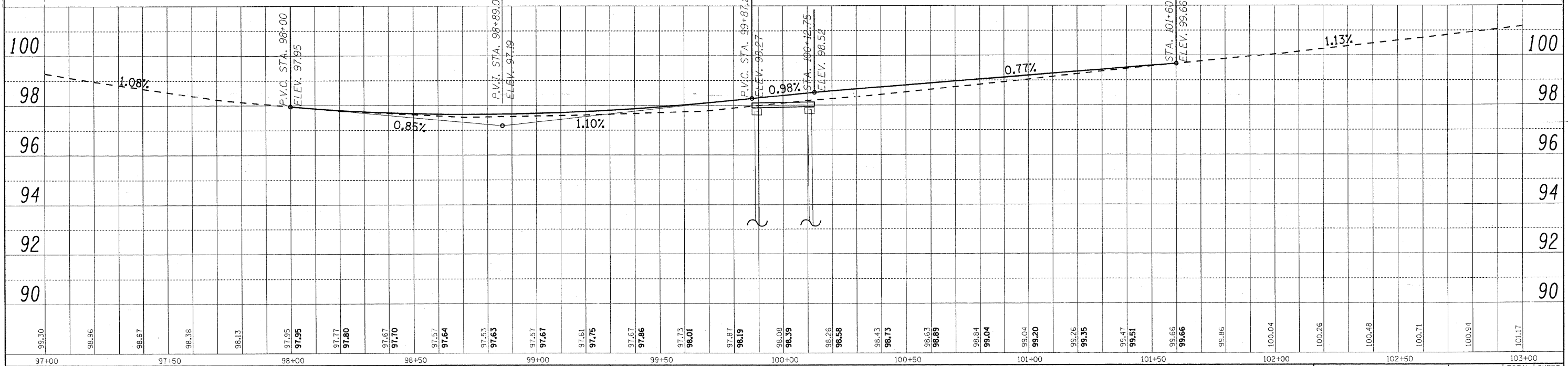
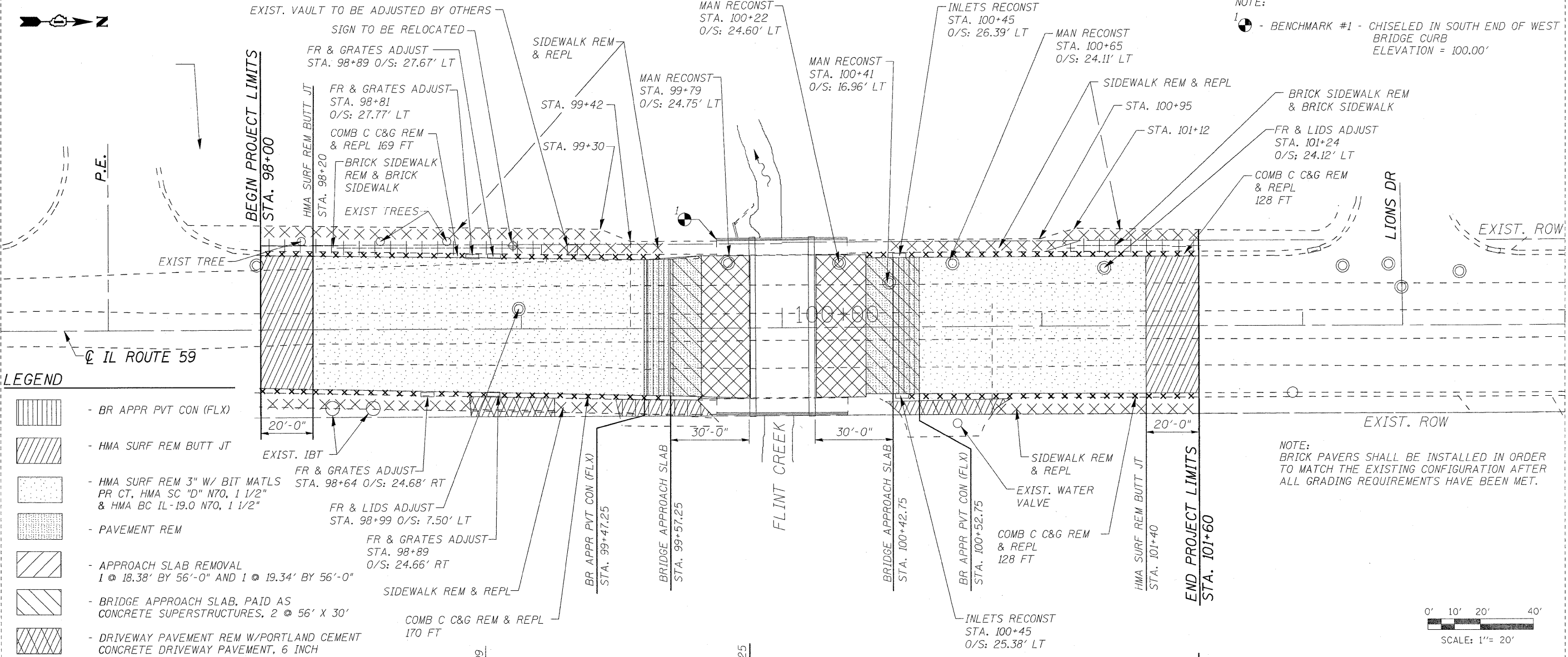


DATE: \_\_\_\_\_ BY: \_\_\_\_\_  
 SURVEYED \_\_\_\_\_  
 PLAN \_\_\_\_\_  
 NOTE BOOK \_\_\_\_\_  
 NO. \_\_\_\_\_

DATE: \_\_\_\_\_ BY: \_\_\_\_\_  
 SURVEYED \_\_\_\_\_  
 PROF. \_\_\_\_\_  
 NOTE BOOK \_\_\_\_\_  
 NO. \_\_\_\_\_



**LONGO, INC.**  
 CONSULTING ENGINEERS  
 1560 WALL ST, SUITE 222  
 NAPERVILLE, ILLINOIS 60563 PH: (630) 577-9100

DESIGNED - MJY	REVISED -
DRAWN - ST, TSC	REVISED -
CHECKED - MJY, SLV	REVISED -
DATE - 03/26/2010	REVISED -

**STATE OF ILLINOIS  
 DEPARTMENT OF TRANSPORTATION**

**PLAN AND PROFILE  
 IL ROUTE 59 OVER FLINT CREEK TRIBUTARY**

SCALE: 1" = 20' SHEET NO. 1 OF 1 SHEETS STA. 98+00 TO STA. 101+60

F.A.P. RTE. 338	SECTION 108 B-1	COUNTY LAKE	TOTAL SHEETS 40	SHEET NO. 9
D-91-289-09		CONTRACT NO. 60F92		
FED. ROAD DIST. NO.		ILLINOIS FED. AID PROJECT		