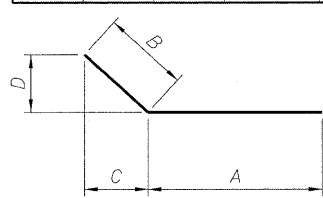


STATE OF ILLINOIS
DEPARTMENT OF TRANSPORTATION

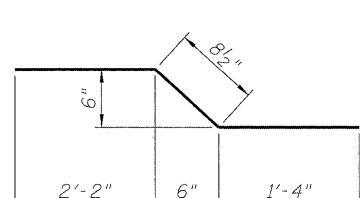
BILL OF MATERIAL

Bar	No.	Size	Length	Shape
d6(E)	71	5	3'-0"	L
h24(E)	14	5	26'-2"	—
h25(E)	14	5	22'-5"	—
h26(E)	12	4	25'-11"	—
h27(E)	12	4	22'-2"	—
h28(E)	4	5	25'-4"	—
h29(E)	4	5	23'-5"	—
h30(E)	8	5	25'-1"	—
h31(E)	8	5	23'-6"	—
h32(E)	4	6	24'-11"	—
h33(E)	4	6	23'-0"	—
h34(E)	2	6	11'-3"	—
h35(E)	2	6	36'-8"	—
h36(E)	2	6	8'-7"	—
h37(E)	2	5	36'-8"	—
h38(E)	2	4	11'-3"	—
h39(E)	1	4	8'-7"	—
h40(E)	1	4	9'-4"	—
h41(E)	1	4	21'-10"	—
h42(E)	1	4	23'-11"	—
h43(E)	1	4	24'-8"	—
h44(E)	5	4	25'-5"	—
h45(E)	4	4	5'-4"	—
h46(E)	4	4	17'-5"	—
s9(E)	86	6	14'-0"	✓
s10(E)	2	6	14'-2"	✓
s11(E)	1	6	14'-6"	✓
s12(E)	2	6	15'-1"	✓
s13(E)	1	6	15'-10"	✓
s14(E)	1	6	14'-5"	✓
s15(E)	1	6	15'-8"	✓
s16(E)	1	6	16'-6"	✓
u6(E)	10	4	3'-0"	—
u7(E)	5	4	5'-4"	—
u8(E)	5	4	4'-4"	—
u9(E)	8	4	3'-8"	—
u10(E)	5	4	4'-0"	—
u11(E)	5	4	3'-4"	—

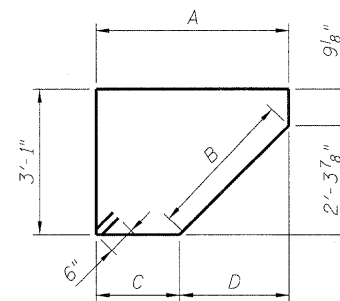
Bar	No.	Size	Length	Shape
v22(E)	66	4	6'-5"	L
v23(E)	24	4	4'-11"	—
v24(E)	92	5	5'-3"	—
v25(E)	1	4	6'-6"	L
v26(E)	1	4	6'-8"	L
v27(E)	1	4	7'-0"	L
v28(E)	1	4	7'-5"	L
v29(E)	95	4	5'-10"	—
v30(E)	92	4	3'-10"	—
v31(E)	21	4	4'-0"	—
v32(E)	71	4	4'-3"	—
v33(E)	16	4	4'-8"	—
v34(E)	4	4	4'-10"	—
v35(E)	4	4	5'-2"	—
v36(E)	5	4	9'-9"	—
v37(E)	2	4	3'-10"	—
v38(E)	1	4	4'-11"	—
v39(E)	5	4	7'-5"	—
Porous Granular Embankment, Special		Cu. Yd.	49	
Concrete Removal		Cu. Yd.	64.7	
Structure Excavation		Cu. Yd.	118	
Concrete Structures		Cu. Yd.	83.1	
Concrete Superstructures		Cu. Yd.	10.9	
Reinforcement Bars, Epoxy Coated		Pound	6,678	
Bar Splicers		Each	27	
Concrete Sealer		Sq. Ft.	536	
Epoxy Crack Injection		Foot	49	
Geocomposite Wall Drain		Sq. Yd.	65	
Structural Repair of Concrete (Depth Equal to or less than 5in.)		Sq. Ft.	54	



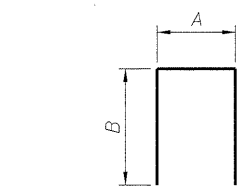
BARS u6(E) THRU u8(E)
u10(E), u11(E), AND v30(E)



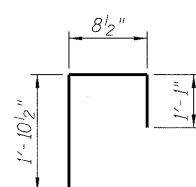
BAR v32(E)



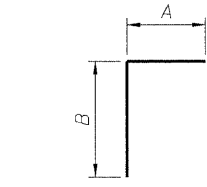
BARS s9(E) THRU s16(E)



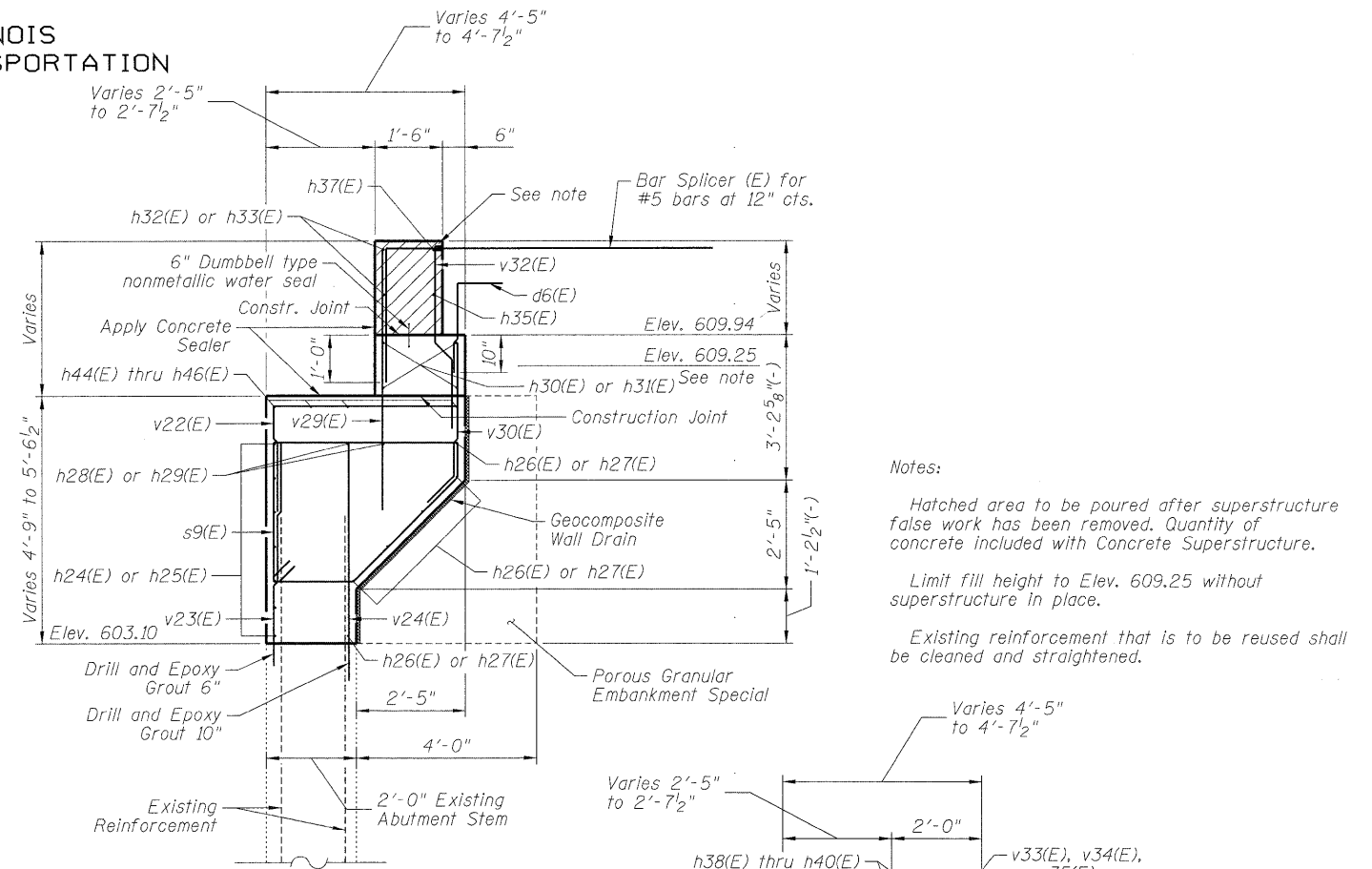
BARS v33(E) THRU v35(E)



BAR u9(E)



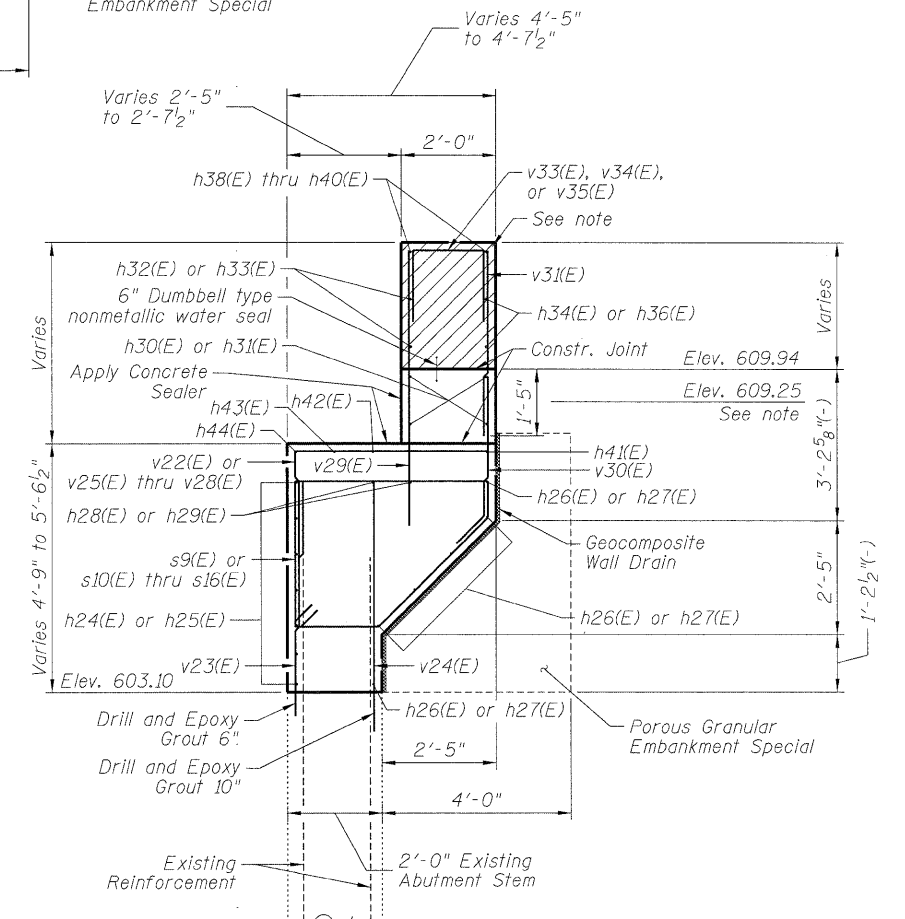
BARS d6(E) AND v22(E)
v25(E) THRU v28(E)



SECTION A-A

BAR DIMENSIONS

Bar	A	B	C	D
u6(E)	1'-6"	1'-6"	11 3/4"	1'-1 5/8"
u7(E)	4'-11 1/8"	4 7/8"	3 1/4"	3 3/4"
u8(E)	3'-6 1/8"	9 1/8"	7 1/8"	6 7/8"
u10(E)	1'-6"	2'-6"	1'-7 1/2"	1'-10 1/2"
u11(E)	1'-6"	1'-10"	1'-2 5/8"	1'-4 7/8"
v30(E)	3'-0"	10"	7 1/8"	7 1/8"
s9(E)	4'-1"	3'-3 3/8"	1'-9 1/8"	2'-3 7/8"
s10(E)	4'-1 1/8"	3'-3 3/4"	1'-9 1/2"	2'-4 3/8"
s11(E)	4'-4 1/4"	3'-4 5/8"	1'-10 1/2"	2'-5 5/8"
s12(E)	4'-8"	3'-6 1/4"	2'-1 1/8"	2'-7 3/4"
s13(E)	5'-3 1/4"	3'-8 3/8"	2'-2 1/4"	2'-10 1/2"
s14(E)	4'-3 7/8"	3'-4 1/2"	1'-10 1/2"	2'-5 3/8"
s15(E)	4'-11 5/8"	3'-7 1/8"	2'-1 3/4"	2'-9 1/8"
s16(E)	5'-4 1/8"	3'-10 1/4"	2'-4"	3'-1 1/8"
v33(E)	1'-8"	1'-6"		
v34(E)	1'-10"	1'-6"		
v35(E)	2'-2"	1'-6"		
d6(E)	1'-0"	2'-0"		
v22(E)	2'-4"	4'-1"		
v25(E)	2'-4"	4'-2"		
v26(E)	2'-4"	4'-4"		
v27(E)	2'-4"	4'-8"		
v28(E)	2'-4"	5'-1"		



SECTION B-B

EAST ABUTMENT III
STRUCTURE NUMBER 016-0610

DESIGNED - ASP
CHECKED - DPW
DRAWN - LNB
CHECKED - ASP

DLZ 85 W. Algonquin Rd. Ste. 220
Arlington Heights IL 60005
DLZ Illinois, Inc. (847)-640-0840

SHEET NO. 30 OF 42 SHEETS	F.A. RTE. 94	SECTION 0101.8B	COUNTY COOK	TOTAL SHEETS 139	SHEET NO. 106
	CONTRACT NO. 60C18				
ILLINOIS FED. AID PROJECT					