

STATE OF ILLINOIS  
DEPARTMENT OF TRANSPORTATION

BEAM 1

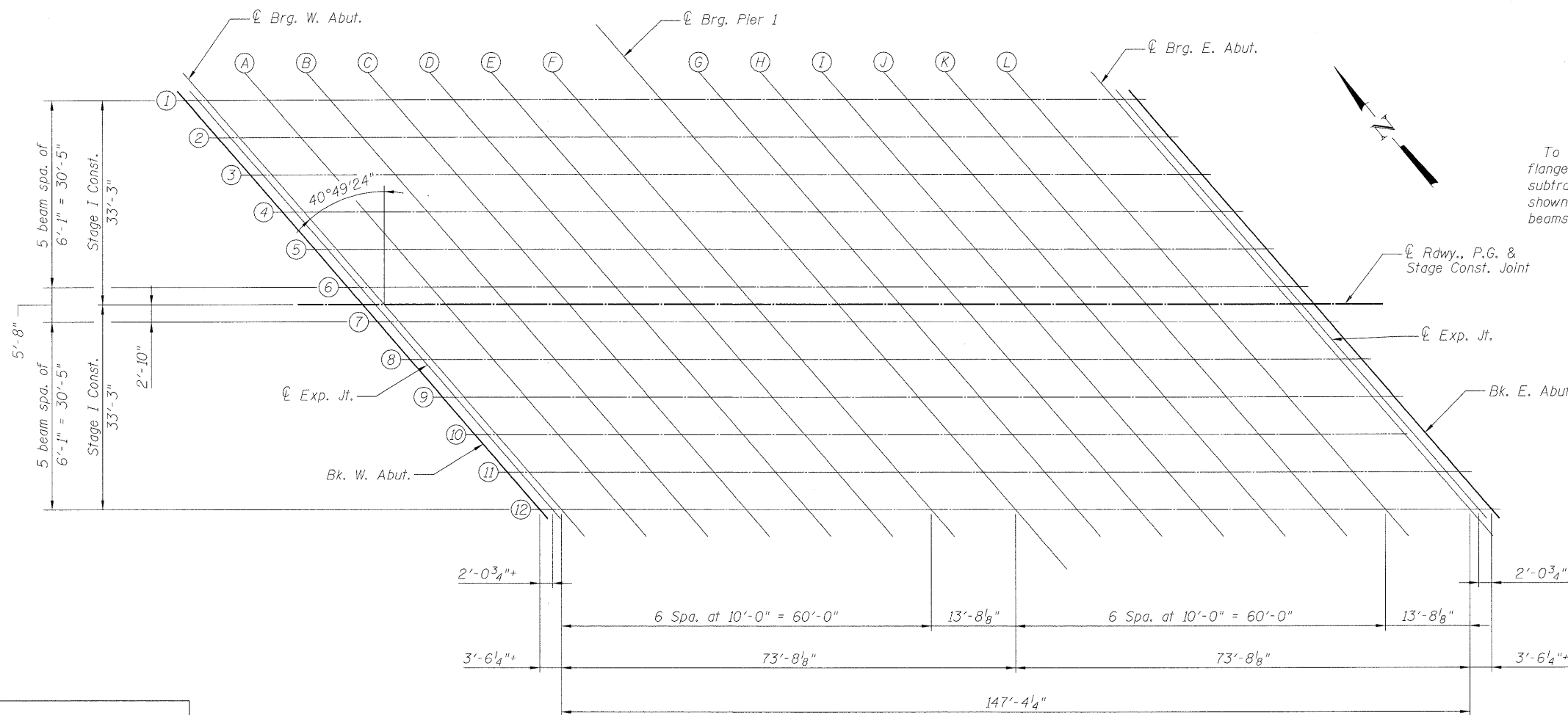
BEAM 2

BEAM 3

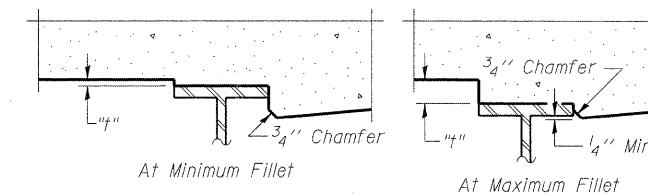
Location	Station	Offset	Theoretical Grade Elevations	Theoretical Grade Elevations Adjusted For Dead Load Deflection
BK. W. ABUT.	48+93.32	-33.25	611.85	611.85
EXP. JT.	48+95.38	-33.25	611.85	611.85
BRG. W. ABUT.	48+96.84	-33.25	611.86	611.86
A	49+06.84	-33.25	611.89	611.93
B	49+16.84	-33.25	611.92	611.99
C	49+26.84	-33.25	611.98	612.06
D	49+36.84	-33.25	612.02	612.10
E	49+46.84	-33.25	612.05	612.10
F	49+56.84	-33.25	612.06	612.09
BRG. PIER 1	49+70.51	-33.25	612.07	612.07
G	49+80.51	-33.25	612.05	612.07
H	49+90.51	-33.25	612.03	612.07
I	50+00.51	-33.25	612.00	612.07
J	50+10.51	-33.25	611.95	612.03
K	50+20.51	-33.25	611.90	611.97
L	50+30.51	-33.25	611.83	611.88
BRG. E. ABUT.	50+44.18	-33.25	611.72	611.72
EXP. JT.	50+45.64	-33.25	611.70	611.70
BK. E. ABUT.	50+47.71	-33.25	611.68	611.68

Location	Station	Offset	Theoretical Grade Elevations	Theoretical Grade Elevations Adjusted For Dead Load Deflection
BK. W. ABUT.	48+98.57	-27.17	611.98	611.98
EXP. JT.	49+00.63	-27.17	611.99	611.99
BRG. W. ABUT.	49+02.09	-27.17	611.99	611.99
A	49+12.09	-27.17	612.03	612.07
B	49+22.09	-27.17	612.07	612.15
C	49+32.09	-27.17	612.12	612.22
D	49+42.09	-27.17	612.16	612.24
E	49+52.09	-27.17	612.18	612.24
F	49+62.09	-27.17	612.19	612.21
BRG. PIER 1	49+75.76	-27.17	612.18	612.18
G	49+85.76	-27.17	612.17	612.18
H	49+95.76	-27.17	612.14	612.18
I	50+05.76	-27.17	612.10	612.17
J	50+15.76	-27.17	612.05	612.14
K	50+25.76	-27.17	611.98	612.07
L	50+35.76	-27.17	611.91	611.97
BRG. E. ABUT.	50+49.44	-27.17	611.79	611.79
EXP. JT.	50+50.90	-27.17	611.77	611.77
BK. E. ABUT.	50+52.96	-27.17	611.75	611.75

Location	Station	Offset	Theoretical Grade Elevations	Theoretical Grade Elevations Adjusted For Dead Load Deflection
BK. W. ABUT.	49+03.83	-21.08	612.12	612.12
EXP. JT.	49+05.89	-21.08	612.13	612.13
BRG. W. ABUT.	49+07.35	-21.08	612.13	612.13
A	49+17.35	-21.08	612.17	612.21
B	49+27.35	-21.08	612.23	612.30
C	49+37.35	-21.08	612.26	612.35
D	49+47.35	-21.08	612.29	612.37
E	49+57.35	-21.08	612.31	612.36
F	49+67.35	-21.08	612.31	612.33
BRG. PIER 1	49+81.02	-21.08	612.30	612.30
G	49+91.02	-21.08	612.27	612.29
H	50+01.02	-21.08	612.24	612.28
I	50+11.02	-21.08	612.19	612.26
J	50+21.02	-21.08	612.14	612.22
K	50+31.02	-21.08	612.07	612.14
L	50+41.02	-21.08	611.99	612.04
BRG. E. ABUT.	50+54.69	-21.08	611.86	611.86
EXP. JT.	50+56.15	-21.08	611.75	611.75
BK. E. ABUT.	50+58.22	-21.08	611.82	611.82

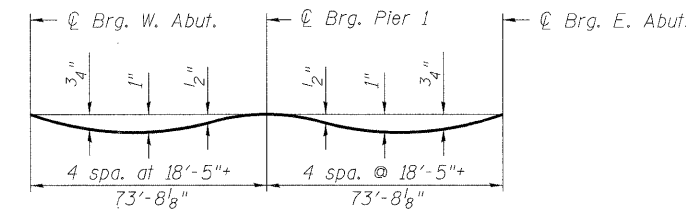


PLAN



To determine "t": After all structural steel has been erected, elevations of the top flanges of the beams shall be taken at intervals shown below. These elevations subtracted from the "Theoretical Grade Elevations Adjusted for Dead Load Deflection" shown below, minus slab thickness, equals the fillet heights "t" above top flange of beams.

FILLET HEIGHTS



DEAD LOAD DEFLECTION DIAGRAM

(Includes weight of concrete only.)

Note:  
The above deflections are not to be used in the field if the engineer is working from the grade elevations adjusted for dead load deflections as shown below and on sheets 9 & 10 of 42.

TOP OF SLAB ELEVATIONS I  
STRUCTURE NUMBER 016-0610

DESIGNED - ASP
CHECKED - WSP
DRAWN - BEM
CHECKED - ASP

**DLZ** 85 W. Algonquin Rd. Ste. 220  
Arlington Heights IL 60005  
DLZ Illinois, Inc. (847)-640-0840

SHEET NO. 8 OF 42 SHEETS	F.A. RTE.	SECTION	COUNTY	TOTAL SHEETS	SHEET NO.
	94	0101.8B	COOK	139	84
			CONTRACT NO. 60C18		
ILLINOIS FED. AID PROJECT					