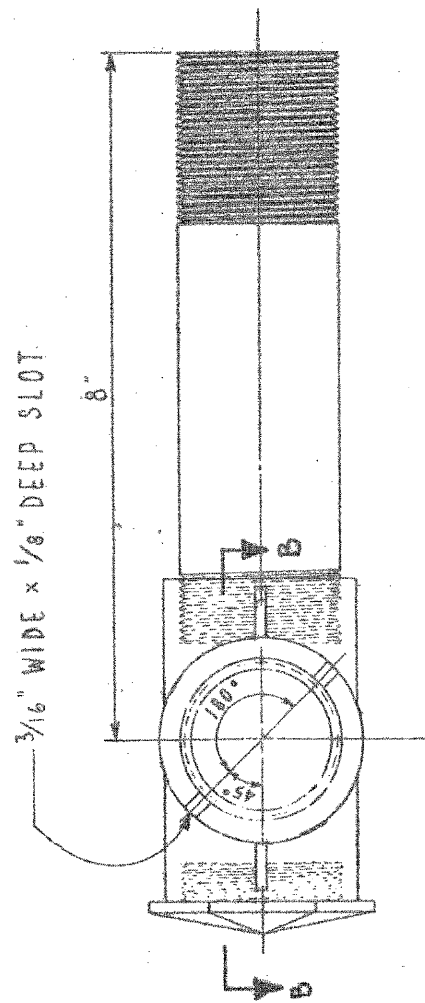
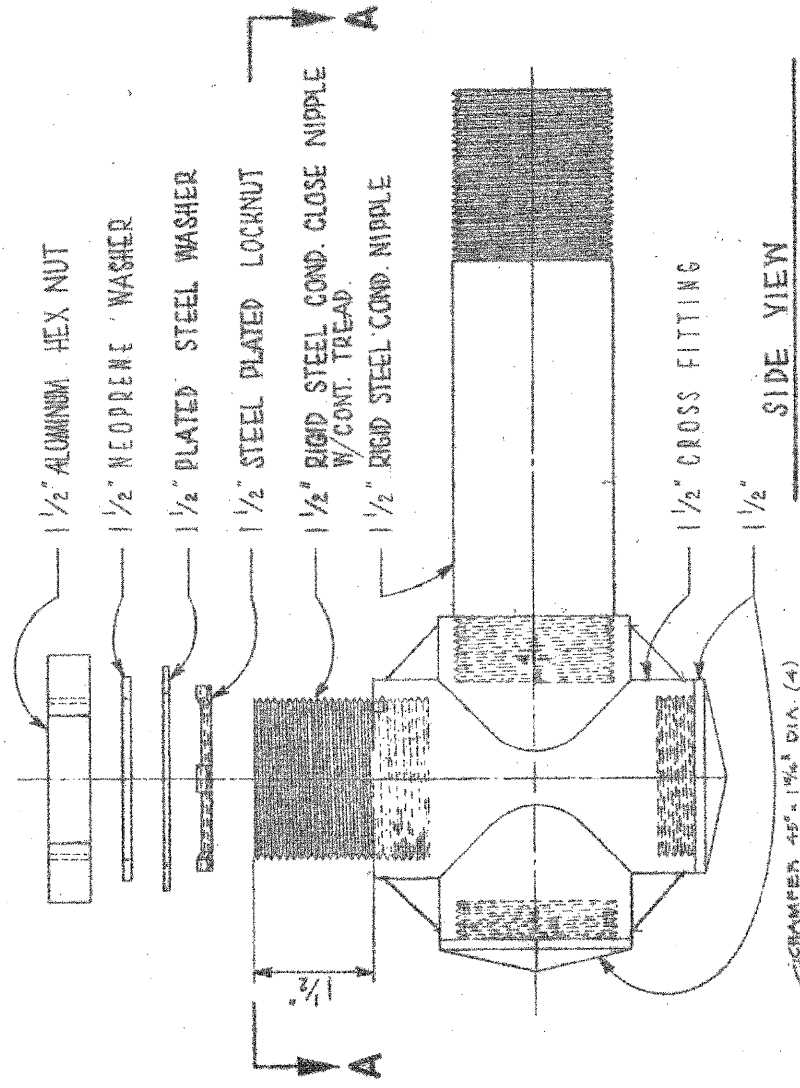


F.A.I. RTE.	SECTION	COUNTY	TOTAL SHEETS	SHEET NO.
94	0101.8B	COOK	139	47

CONTRACT NO. 60C18

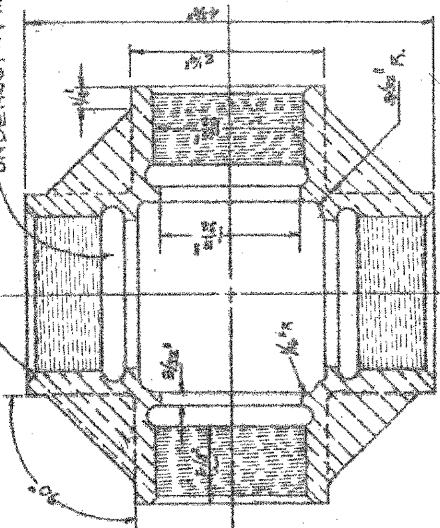


TOP VIEW A - A



SIDE VIEW

CHAMFER 45° ± 1/16" DIA. (4)
UNDERCUT - 1/16" DIA. 1/4" WIDE (4)



SECTION B - B

DELETE SET SCREWS
ADDED SECTION B-B

**TRAFFIC SIGNAL
BRACKET ARM ASSEMBLY**

CITY OF CHICAGO
DEPT. OF STREETS & SANITATION
BUREAU OF ELECTRICITY
DIVISION OF ELEC. ENGINEERING

REVISED	DATE	BY	CHECKED	DATE
A	1-23-81	E. GERVAS	P.C. 1 m.s.	L. GOSCI
B	12-6-86			
C				
D				
E				
F				

741

DPT. OF STREETS & SANITATION
DEPT. OF ELECTRICITY
DIVISION OF ELEC. ENGINEERING
SCALE: 1/4" = 1"
DATE: 8-21-74

REVISIONS	
NAME	DATE

ILLINOIS DEPARTMENT OF TRANSPORTATION
ELSTON AVE. BRIDGE OVER I-94
STANDARD SIGNAL DRAWINGS
SHEET 2 OF 5

SCALE: 1"=20' DRAWN BY: MS
CHECKED BY: