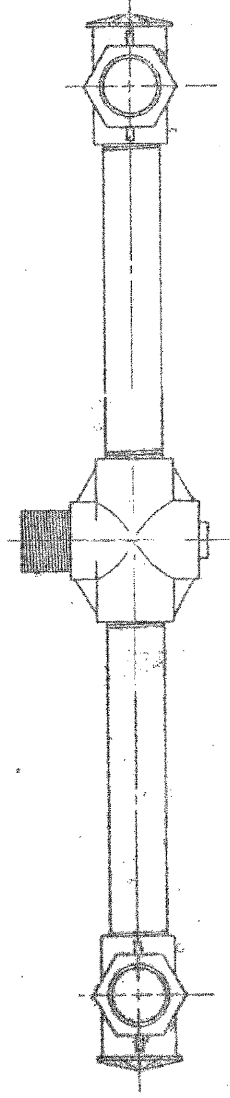
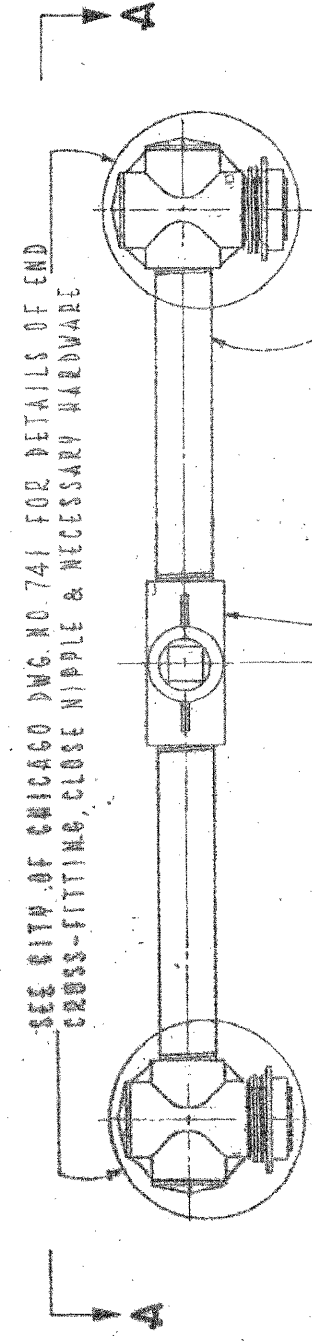


TOP VIEW A - A



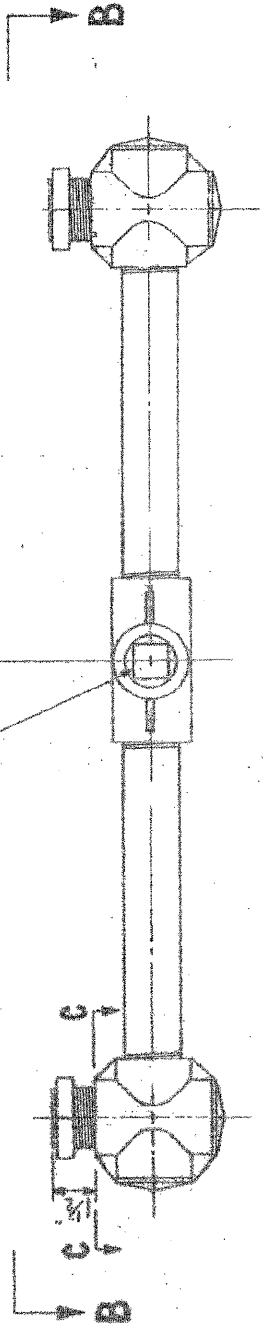
TOP VIEW B - B



1 1/2" CENTER CROSS FITTING

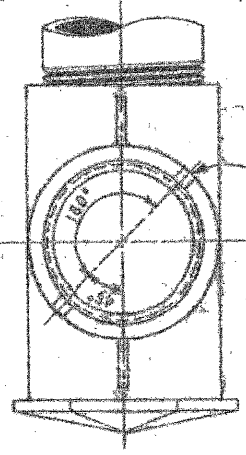
1 1/2" COND. NIPPLE

1 1/2" PIPE PLUG



FRONT VIEW

SCALE: 3/8" = 1"



SECTION C - C

SCALE: 1/2" = 1"

TRAFFIC SIGNAL UPPER & LOWER BRACKET ARM ASSEMBLY

CITY OF CHICAGO
DEPT. OF STREETS & SANITATION
BUREAU OF ELECTRICITY
DIVISION OF ELECTRICAL ENGINEERING

REVISIONS:

A	1-23-1981	E. GERULIS	D.C.	M.S.	L. CUCCI	DWR. NO.
B						
C						
D						
E						
F						

REVISIONS DRAWN: [Signature]
CHECKED: [Signature]
ENGINEER: [Signature]

740

SCALE: AS NOTED

MFG: 8-21-74

REVISIONS	DATE
NAME	

ILLINOIS DEPARTMENT OF TRANSPORTATION
ELSTON AVE. BRIDGE OVER I-94
STANDARD SIGNAL DRAWINGS
SHEET 1 OF 5

SCALE: 1" = 20'

DRAWN BY MS
CHECKED BY