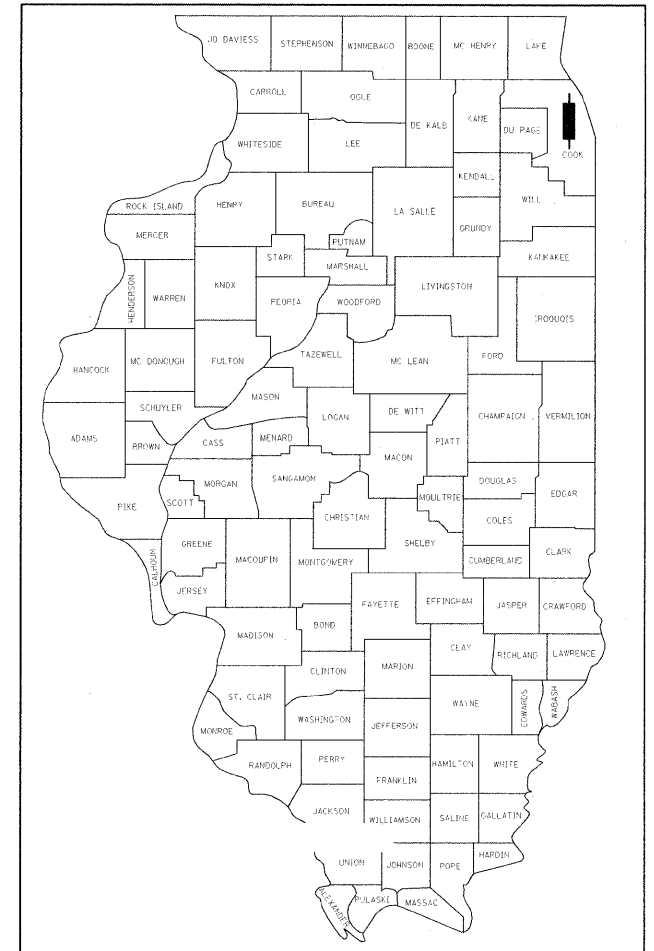


F.A.I. RTE.	SECTION	COUNTY	TOTAL SHEETS	SHEET NO.
94	0101.8B	COOK	139	1
ILLINOIS			CONTRACT NO. 60C18	

* 139 + 6 = 145

D-91-149-07



LOCATION OF SECTION INDICATED THUS: -

PROJECT IS LOCATED IN THE CITY OF CHICAGO

STATE OF ILLINOIS
DEPARTMENT OF TRANSPORTATION
DIVISION OF HIGHWAYS

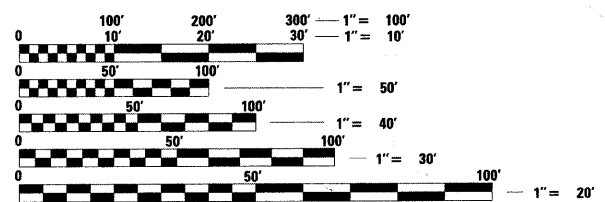
FOR INDEX OF SHEETS, SEE SHEET NO. 2
FOR STATE STANDARDS, SEE SHEET NO. 2

PROPOSED HIGHWAY PLANS

ROUTE FAI 94: I-94 (EDENS EXPRESSWAY)
LOCATION: AT ELSTON AVE
SECTION: 0101.8B
PROJECT: ACIM-094-2(246)043
BRIDGE REPLACEMENT & LIGHTING
C-91-149-07
COOK COUNTY

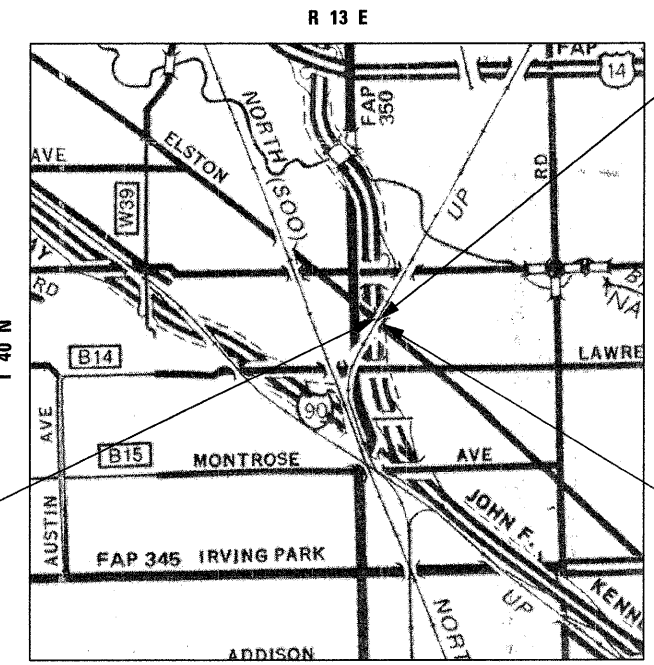
TRAFFIC DATA

	POSTED SPEED	DESIGN SPEED
ELSTON AVE	30	30
I-94	55	55



FULL SIZE PLANS HAVE BEEN PREPARED USING STANDARD ENGINEERING SCALES. REDUCED SIZED PLANS WILL NOT CONFORM TO STANDARD SCALES. IN MAKING MEASUREMENTS ON REDUCED PLANS, THE ABOVE SCALES MAY BE USED.

J.U.L.I.E.
JOINT UTILITY LOCATION INFORMATION FOR EXCAVATION
1-800-892-0123 OR 811
AND C.U.A.N.
CHICAGO UTILITY ALERT NETWORK
(312) 744-7000



OVERPASS
ELSTON OVER I-94
STA 49 + 99.23
S.N. 016-0610
147'-4" CONTINUOUS
TWO SPAN COMPOSITE
MULTI-GIRDER BRIDGE

PROJECT BEGINS
STA 48 + 57

PROJECT ENDS
51 + 71

JEFFERSON TOWNSHIP
GROSS LENGTH = 314 FT. = 0.06 MILE
NET LENGTH = 314 FT. = 0.06 MILE

LIGHTING DESIGNED BY
SPAAN Tech, Inc.
311 S. Wacker Drive, Suite 2400
Chicago, Illinois 60606
phone: 312.277.8800
fax: 312.277.8808
web: www.SpaanTech.com



PROJECT ENGINEER: CRAIG BAUER - 847-705-4265
PROJECT MANAGER: LONG TRAN - 847-705-4232

CONTRACT NO. 60C18

IRVIN A. BERMAN
062-023180
LICENSED PROFESSIONAL ENGINEER OF ILLINOIS
SEAL
Signature: Irvin A. Berman
DATE: 6/18/2010
EXPIRES: 11/30/2011

STATE OF ILLINOIS
REGISTERED PROFESSIONAL ENGINEER
SEAL
Signature: Gregory R. Brumm
DATE: 6/18/10
EXPIRES: 11/30/11

WAYNE A. TRLEY
REGISTERED STRUCTURAL ENGINEER
STATE OF ILLINOIS
SEAL
Signature: Wayne A. Trley
DATE: 6-18-10
EXPIRES: 11-30-10

STATE OF ILLINOIS
DEPARTMENT OF TRANSPORTATION
DIVISION OF HIGHWAYS
SUBMITTED JUNE 21, 2010
Diana M. O'Keefe
DEPUTY DIRECTOR OF HIGHWAYS, REGION ENGINEER
August 13, 2010
Scott E. Stitt, P.E.
ENGINEER OF DESIGN AND ENVIRONMENT
August 13, 2010
Christine M. Reed
DIRECTOR OF HIGHWAYS, CHIEF ENGINEER

PRINTED BY THE AUTHORITY
OF THE STATE OF ILLINOIS