

RESURFACING LEGEND

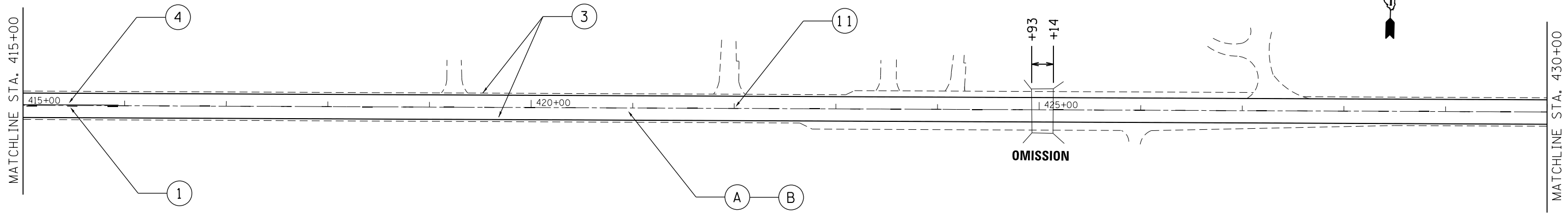
- (A) PROP. HOT IN-PLACE RECYCLING, 1"
- (B) PROP. HOT-MIX ASPHALT SURFACE COURSE, MIX "D", N70
- (C) SURFACE REMOVAL BUTT JOINT
SEE BUTT JOINTS AND HMA TAPER DETAILS (BD32)

NOTES

1. REFER TO DISTRICT 1 TYPICAL PAVEMENT MARKINGS (TC-13) FOR ADDITIONAL INFORMATION.
2. REFER TO DISTRICT 1 RAISED REFLECTIVE PAVEMENT MARKER (TC-11) FOR ADDITIONAL INFORMATION.

PAVEMENT MARKING LEGEND

- (1) THERMOPLASTIC PAVEMENT MARKING, 4" YELLOW LANE LINE (30' SKIP, 10' DASH)
- (2) THERMOPLASTIC PAVEMENT MARKING, 4" WHITE LANE LINE (6' SKIP, 2' DASH)
- (3) THERMOPLASTIC PAVEMENT MARKING, 4" SOLID WHITE LINE
- (4) THERMOPLASTIC PAVEMENT MARKING, 4" SOLID NO PASSING ZONE LINE
- (5) THERMOPLASTIC PAVEMENT MARKING, 4" DOUBLE YELLOW LINE, 11" C-C
- (6) THERMOPLASTIC PAVEMENT MARKING, 8" WHITE LINE
- (7) THERMOPLASTIC PAVEMENT MARKING, 12" DIAGONAL WHITE LINE
- (8) THERMOPLASTIC PAVEMENT MARKING, 12" LONGITUDINAL WHITE BARS
- (9) THERMOPLASTIC PAVEMENT MARKING, 24" WHITE LINE
- (10) THERMOPLASTIC PAVEMENT MARKING, LETTERS AND SYMBOLS
- (11) RAISED REFLECTIVE PAVEMENT MARKER (SEE NOTE 2)



FILE NAME =	USER NAME = Bakerom	DESIGNED -	REVISED -
ei:\pwwork\pwwork\bakermo\d0331242\0118313-sh1-plan.dgn		DRAWN -	REVISED -
Default	PLOT SCALE = 100.0000' / in.	CHECKED -	REVISED -
	PLOT DATE = 6/2/2014	DATE -	REVISED -

**STATE OF ILLINOIS
DEPARTMENT OF TRANSPORTATION**

**US 52 (2ND STREET TO US 45)
ROADWAY & PAVEMENT MARKING PLAN**

SCALE: 1"=50' SHEET OF SHEETS STA. TO STA.

F.A.P. RTE.	SECTION	COUNTY	TOTAL SHEETS	SHEET NO.
852	(17&18) RS-6	WILL	33	21
CONTRACT NO. 60W12				
ILLINOIS FED. AID PROJECT				