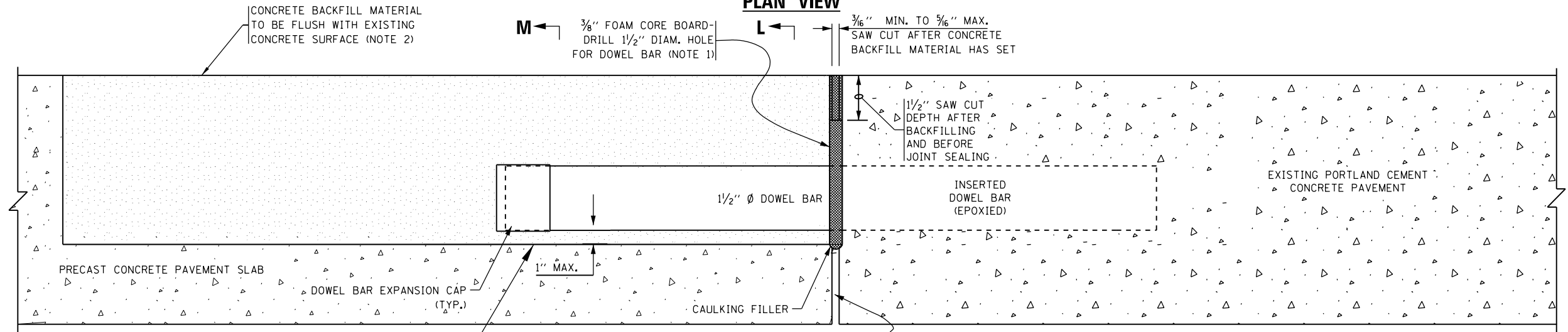


PLAN VIEW



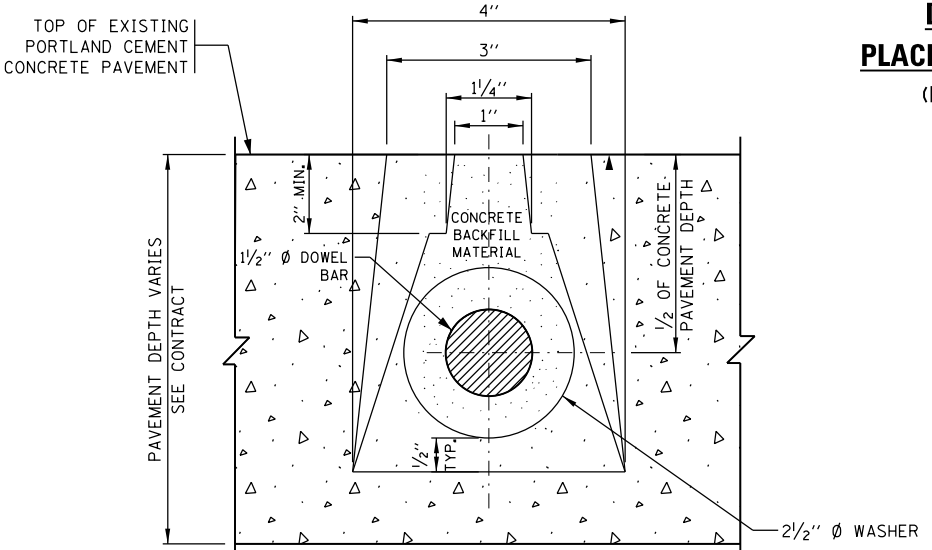
SECTION G-G

**DETAIL G - NARROW MOUTH DOWEL BAR
PLACEMENT DETAIL FOR ISOLATED PRECAST PANELS**

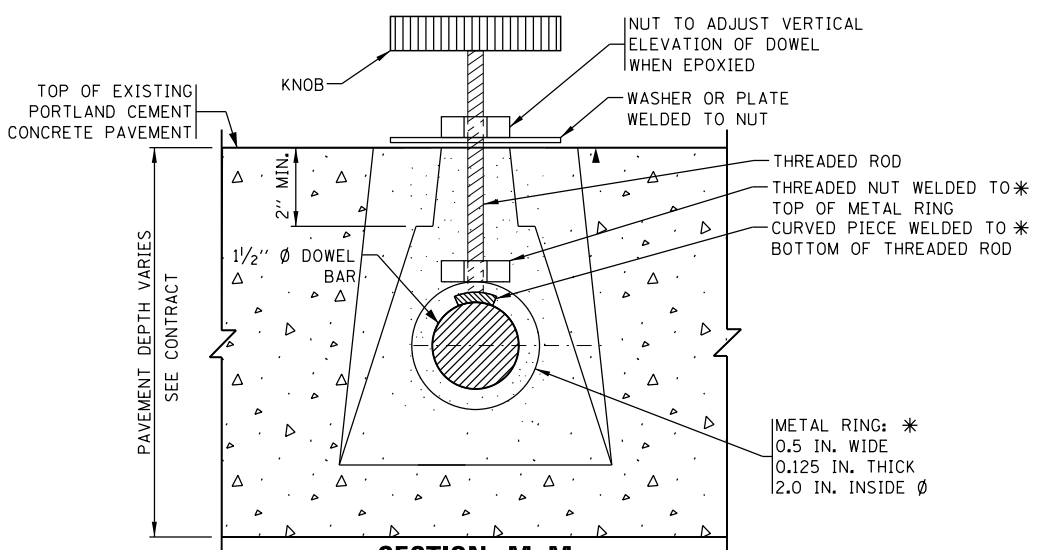
(FOR OPTIONAL APPLICATION WITH ALL ISOLATED
SLABS IN PLACE OF FULL RETROFITS)

NOTES:

1. PLACE FOAM CORE BOARDS TO THE TOP OF PATCH.
2. UPON COMPLETION, THE FINISHED SURFACE OF THE CONCRETE BACKFILL MATERIAL SHALL NOT BE BELOW EXISTING CONCRETE SURFACE.



SECTION L-L



SECTION M-M

CLAMP DETAIL FOR SLIDING DOWEL BAR SLOTS

* METAL RING MAY BE REPLACED WITH A STRONG MAGNET WELDED TO THE THREADED ROD. AT LEAST ONE CLAMP WILL BE NEEDED FOR EACH INSERTED DOWEL BAR TO MAINTAIN ALIGNMENT.

FILE NAME =	USER NAME = dettmanna	DESIGNED - O. PATEL	REVISED - D.G. 6-14	STATE OF ILLINOIS DEPARTMENT OF TRANSPORTATION	PRECAST CONCRETE PAVEMENT SLABS			F.A. RTE.	SECTION	COUNTY	TOTAL SHEETS	SHEET NO.	
Default	Plot Scale = 100.0000' / in.	CHECKED -	REVISED -					353	23R-R5	COOK	66	56	
	PLOT DATE = 6/19/2014	DATE - 10-25-2013	REVISED -		SCALE: NONE	SHEET 17	OF 19 SHEETS	STA.	TO STA.	BD 57			CONTRACT NO. 60L94
					ILLINOIS FED. AID PROJECT								