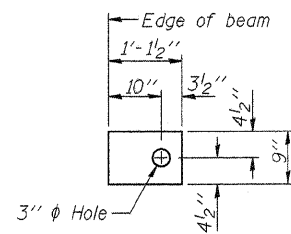


FABRIC BEARING PAD

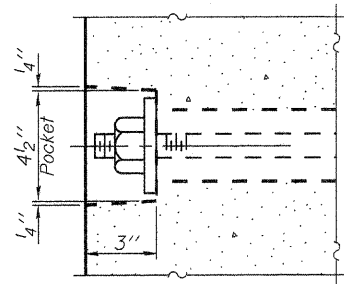
(Interior)
(48 Required)



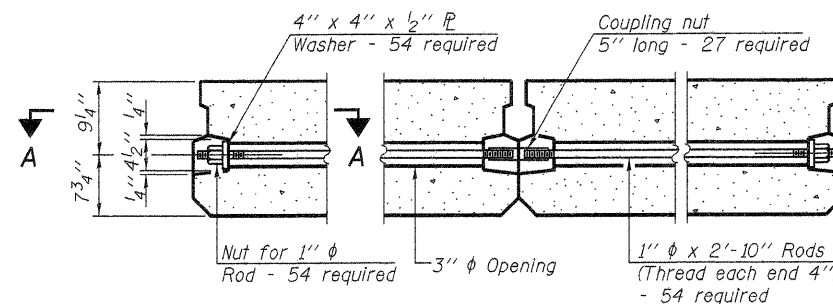
FABRIC BEARING PAD

(Exterior)
(24 Required)

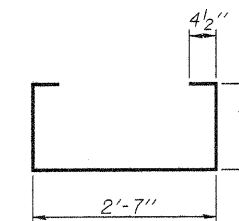
Notes:
All bearing pads shall be 1" thick.



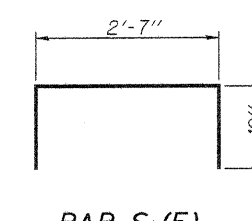
SECTION A-A



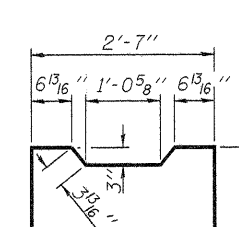
TYPICAL TRANSVERSE TIE ASSEMBLY



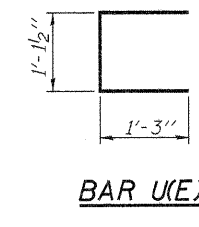
BAR S(E)



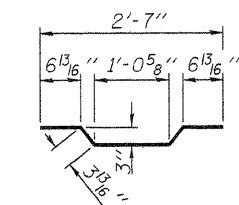
BAR S1(E)



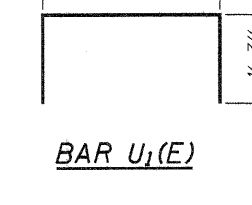
BAR S2(E)



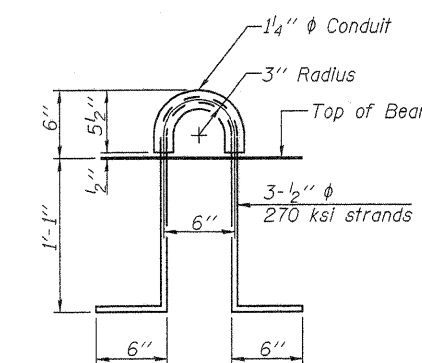
BAR U(E)



BAR A1(E)



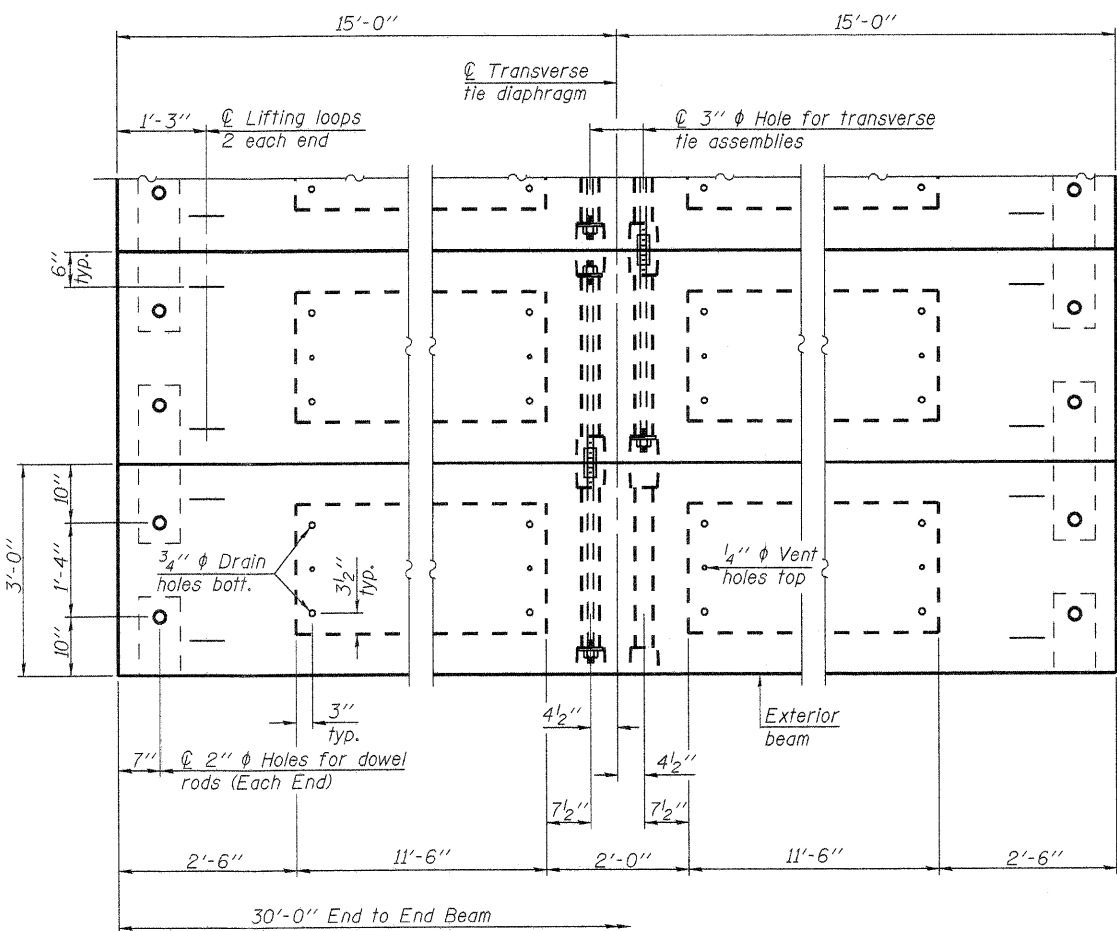
BAR U1(E)



LIFTING LOOP DETAIL

BILL OF MATERIAL

Precast Prestressed Conc. Deck Bms. (17" depth)	Sq. Ft.	2,700
Estimated Total Weight (One Beam) = 16,450 Pounds		



PLAN VIEW

Note: Connect beams in pairs with the transverse tie configuration shown.

NOTES

- Prestressing steel shall be uncoated high strength, low relaxation 7-wire strand, Grade 270. The nominal diameter shall be 1/2" and the nominal cross-sectional area shall be 0.153 sq. in.
- The 1" diameter rods in the transverse tie assembly shall be tightened to a snug fit and the threads is in place.
- Reinforcement bars shall conform to ASTM A 706, Grade 60.
- Two 1/8" fabric adjusting shims of the dimensions of the exterior bearing pad shall be provided for each bearing pad location. (144 Required)
- A minimum 2 1/2" diameter lifting pin shall be used to engage the lifting loops during handling.
- Corrosion Inhibitor, per Article 1020.05(b)(12) and 1021.06 of the Standard Specifications, shall be used in the concrete for precast prestressed concrete deck beams.
- Compressive strength of prestressed concrete, f'c, shall be 6000 psi.
- Compressive strength of prestressed concrete at release, f'ci, shall be 5000 psi.
- Rail post inserts, specified elsewhere, shall be cast into the exterior face of the outside beams.
- See Special Provisions for review and distribution of shop drawings.

PD-1736-0D

7-1-10

FILE NAME = 18-273.SUPER.DGN	USER NAME = S.A.P.	DESIGNED - A.L.S.	REVISED -
		CHECKED - A.R.K.	REVISED -
	PLOT SCALE = XXX	DRAWN - S.A.P.	REVISED -
	PLOT DATE = 04/19/11	CHECKED - A.L.S. & A.R.K.	REVISED -

FEHR-GRAHAM & ASSOCIATES, LLC
ENGINEERING AND SCIENCE CONSULTANTS
FREEPORT, IL ROCKFORD, IL ROCHELLE, IL MONROE, WI SPRINGFIELD, IL

17" x 36" PPC DECK BEAM DETAILS
S.N. 084-3443

C.H.	SECTION	COUNTY	TOTAL SHEETS	SHEET NO.
48	08-00095-00-BR	SANGAMON	18	8
CONTRACT NO. 9 8 5 5 3				
ILLINOIS FED. AID PROJECT				