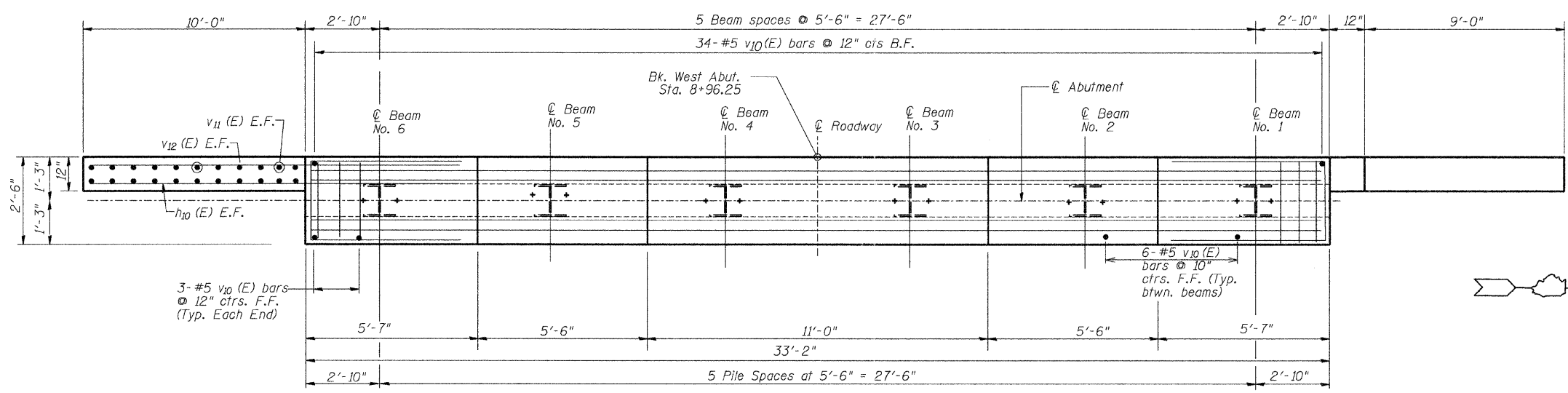
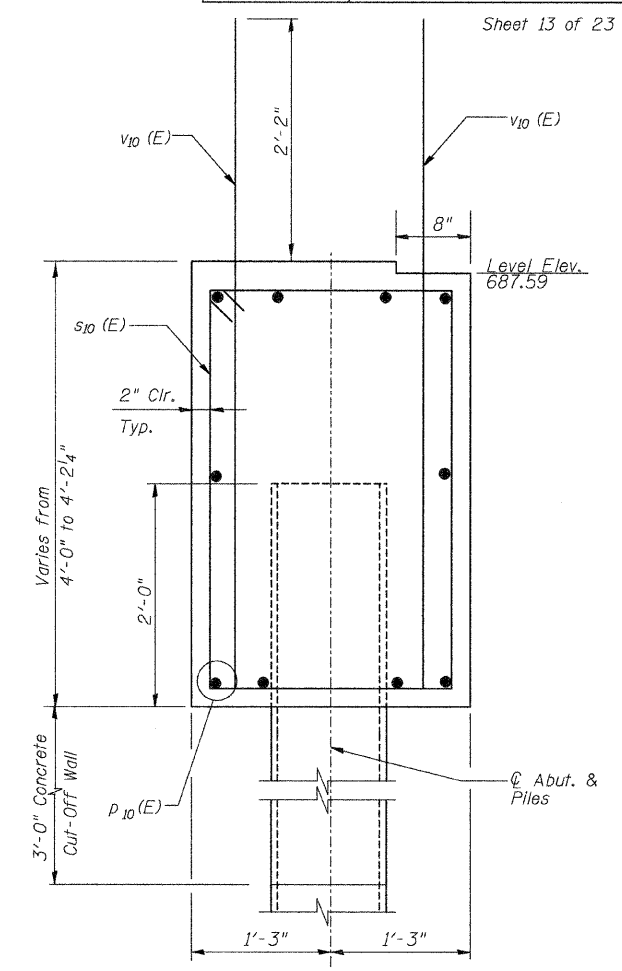
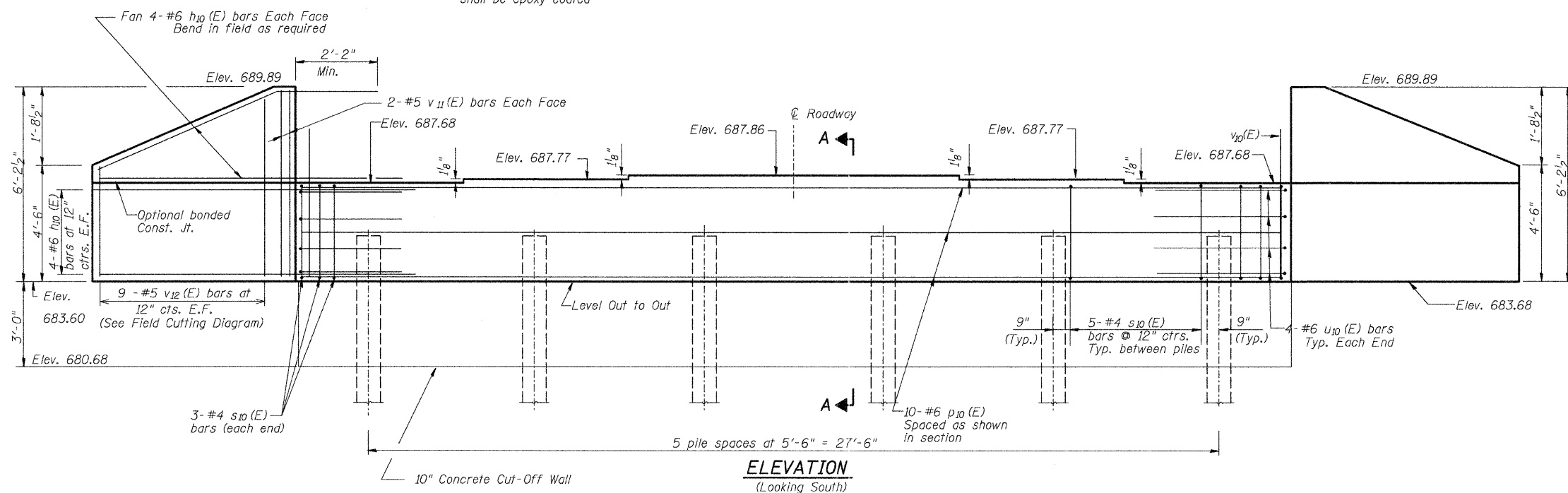
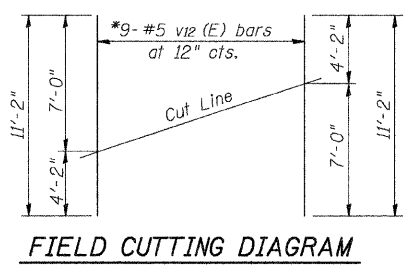
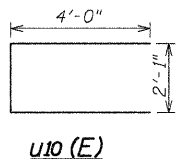
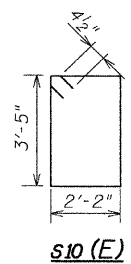
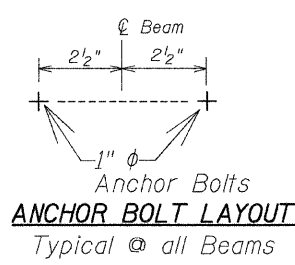


ROUTE NO.	SECTION	COUNTY	TOTAL SHEETS	SHEET NO.
C.H. II	10-00962-00-BR	CHAMPAIGN	40	21
STA.	TO STA.			
F.H.W.A. REG.	ILLINOIS	PROJECT		

Notes: Pour steps monolithically with cap.  
Reinforcement bars designated (E)  
shall be epoxy coated



Note: All edges shall have a standard 3/4" chamfer except as noted. One test pile is required at West Abutment.



**PILE DATA**  
Type : Steel HP10X42  
Nominal Req'd Bearing : 222 kips  
Allowable Resistance Available : 74 kips  
Est. Length : 45'  
No. Required : 5  
Test Pile : 1

**BILL OF MATERIAL**

Bar No.	Size	Length	Shape
h10(E)	32 #6	12'-6"	—
p10(E)	10 #6	32'-10"	—
s10(E)	31 #4	11'-11"	□
u10(E)	8 #6	10'-1"	□
v10(E)	70 #5	6'-0"	—
v11(E)	8 #5	7'-0"	—
v12(E)	18 #5	11'-2"	—
Structure Excavation	Cu. Yd.	79	
Concrete Structures	Cu. Yd.	16.6	
Reinforcement Bars	Pound	2170	
Epoxy Coated			
Furnishing Steel Piles	Foot	225	
HP10X42			
Driving Piles	Foot	225	
Concrete Cut-Off Wall	Cu. Yd.	3.1	
Pile Shoes	Each	6	
Test Pile HP10X42	Each	1	

**WEST ABUTMENT**  
SECTION: 10-00962-00-BR  
CHAMPAIGN COUNTY  
Q STATION 10+00