

F.A.P. RTE.	SECTION	COUNTY	TOTAL SHEETS	SHEET NO.
885	(112,7)I-1	POPE	10	1
PROJECT NO.		ILLINOIS		

STATE OF ILLINOIS
DEPARTMENT OF TRANSPORTATION
DIVISION OF HIGHWAYS
**PROPOSED
HIGHWAY PLANS**

FAP 885 (IL 146)
SECTION (112,7)I-1

LEVEE GATE REPAIRS
POPE COUNTY
C-99-063-11

D-99-052-11

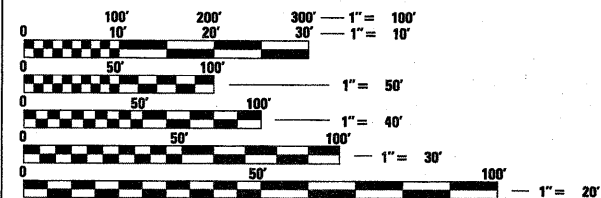


FOR INDEX OF SHEETS, SEE SHEET NO. 2
FOR SUMMARY OF QUANTITIES, SEE SHEET NO. 3

TRAFFIC DATA

2009 ADT. = 2350 WITH 4% TRUCKS

**TOWNSHIP
ROAD DISTRICT #2**

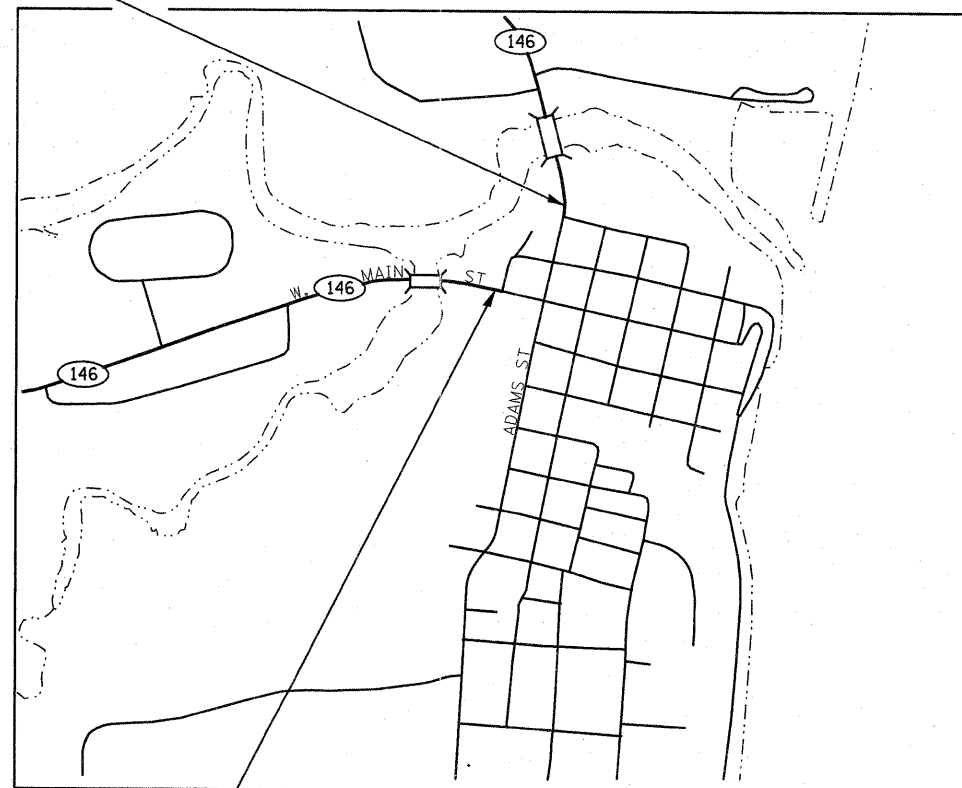


FULL SIZE PLANS HAVE BEEN PREPARED USING STANDARD ENGINEERING SCALES. REDUCED SIZED PLANS WILL NOT CONFORM TO STANDARD SCALES. IN MAKING MEASUREMENTS ON REDUCED PLANS, THE ABOVE SCALES MAY BE USED.

J.U.L.I.E.
JOINT UTILITY LOCATION INFORMATION FOR EXCAVATION
1-800-892-0123 or www.julie1call.com

CONTRACT NO. 78275

**NORTH GATE
LOCATION 2
SEE SHEET 5**



LEVEE GATE REPAIRS

**WEST GATE
LOCATION 1
SEE SHEET 4**

**LOCATION 1
ROADWAY LENGTH: 197'**

**LOCATION 2
ROADWAY LENGTH: 241.5'**

STATE OF ILLINOIS
DEPARTMENT OF TRANSPORTATION
DIVISION OF HIGHWAYS

SUBMITTED June 21 20 11

Mary C. Lomic
DEPUTY DIRECTOR OF HIGHWAYS, REGION ENGINEER

July 1 20 11
Scott E. Stitt, P.E. Ia
acting ENGINEER OF DESIGN AND ENVIRONMENT

July 1 20 11
Christine M. Reed, Ia
DIRECTOR OF HIGHWAYS, CHIEF ENGINEER

**PRINTED BY THE AUTHORITY
OF THE STATE OF ILLINOIS**

PROJECT ENGINEER: GRANT DETERING
PROJECT MANAGER: DAVID PICHE (618) 351-5227

INDEX OF SHEETS

- 1 COVER SHEET
- 2 INDEX OF SHEETS, GENERAL NOTES, STANDARDS
- 3 SUMMARY OF QUANTITIES
- 4 PLAN SHEET - LOCATION 1
- 5 PLAN SHEET - LOCATION 2
- 6 DETAILS
- 7 ORIGINAL LEVEE GATE PLAN SHEET - LOCATION 1
- 8 ORIGINAL LEVEE GATE PLAN SHEET - LOCATION 2
- 9 ORIGINAL LEVEE GATE DETAIL SHEET 1
- 10 ORIGINAL LEVEE GATE DETAIL SHEET 2

STANDARDS

- 000001-06 STANDARD SYMBOLS, ABBREVIATIONS AND PATTERNS
- 420001-07 PAVEMENT JOINTS
- 420701-02 BRIDGE APPROACH PAVEMENT CONNECTOR
- 442101-07 CLASS B PATCHES
- 482006-03 HMA SHOULDER ADJACENT TO RIGID PAVEMENT
- 630001-09 STEEL PLATE BEAM GUARDRAIL
- 701001-02 OFF-ROAD OPERATIONS, 2L, 2W, MORE THAN 4.5 M (15') AWAY
- 701006-03 OFF-ROAD OPERATIONS, 2L 2W, 4.5 m (15') TO 600 mm (24") FROM PAVEMENT EDGE
- 701201-04 LANE CLOSURE, 2L 2W, DAY ONLY, ON-ROAD TO 600 mm (24") OFF-ROAD, FOR SPEEDS ≥ 45 MPH
- 701206-03 LANE CLOSURE, 2L 2W, NIGHT ONLY, FOR SPEEDS ≥ 45 MPH
- 701311-03 LANE CLOSURE, 2L, 2W, MOVING OPERATIONS, DAY ONLY
- 701901-01 TRAFFIC CONTROL DEVICES
- 780001-02 TYPICAL PAVEMENT MARKINGS
- 781001-03 TYPICAL APPLICATIONS RAISED REFLECTIVE PAVEMENT MARKERS

GENERAL NOTES

THE THICKNESS OF HOT MIX ASPHALT MIXTURE SHOWN ON THE PLANS IS THE NOMINAL THICKNESS. DEVIATIONS FROM THE NOMINAL THICKNESS WILL BE PERMITTED WHEN SUCH DEVIATIONS OCCUR DUE TO IRREGULARITIES IN THE EXISTING SURFACE OR BASE ON WHICH THE HOT MIX ASPHALT MIXTURE IS PLACED.

FACTORS USED FOR QUANTITY CALCULATIONS ARE AS FOLLOWS:
 ALL HOT MIX ASPHALT: 2.016 TONS/CU. YD.
 HOT MIX ASPHALT MATERIALS ON PAVEMENT: 0.09 GAL./SQ. YD.
 AGGREGATE (PRIME COAT): 0.0015 TONS/SQ. YD.
 ALL AGGREGATE: 2.05 TONS/CU. YD.
 RIPRAP 1.50 TONS/CU YD

PLAN DIMENSIONS AND DETAILS RELATIVE TO THE EXISTING STRUCTURE HAVE BEEN TAKEN FROM EXISTING PLANS AND ARE SUBJECT TO NOMINAL CONSTRUCTION VARIATIONS. IT SHALL BE THE CONTRACTOR'S RESPONSIBILITY TO VERIFY SUCH DIMENSIONS AND DETAILS IN THE FIELD AND MAKE NECESSARY APPROVED ADJUSTMENTS PRIOR TO CONSTRUCTION OR ORDERING OF MATERIALS. SUCH VARIATIONS SHALL NOT BE A CAUSE FOR ADDITIONAL COMPENSATION FOR A CHANGE IN THE SCOPE OF THE WORK. THE CONTRACTOR, HOWEVER, WILL BE PAID FOR THE ACTUAL QUANTITY FURNISHED AT THE UNIT PRICE BID FOR THE WORK. CONSTRUCTION PLANS ARE AVAILABLE FOR REVIEW AT THE DISTRICT 9 OFFICE.

AT ALL LOCATIONS WHERE HOT MIX ASPHALT OR CONCRETE PAVEMENT JOINS AN EXISTING HOT MIX ASPHALT OR CONCRETE PAVEMENT, A SAWED JOINT SHALL BE CONSTRUCTED. THE COST OF THIS JOINT SHALL BE INCLUDED IN THE TYPE OF PAVEMENT BEING CONSTRUCTED.

PRIOR TO PLACEMENT OF THE FINAL PAVEMENT MARKINGS, THE RESIDENT ENGINEER SHOULD CONTACT THE BUREAU OF OPERATIONS AND ARRANGE FOR INSPECTION AND APPROVAL OF THE PAVEMENT MARKING LAYOUT.

ATTAINMENT OF PROPER CROWN SHALL BE FULLY ACCOMPLISHED WITH THE HOT MIX ASPHALT LEVELING BINDER AS DIRECTED BY THE ENGINEER.

THE EXISTING ROAD SIGNS THAT INTERFERE WITH CONSTRUCTION SHALL BE RELOCATED AS DIRECTED BY THE ENGINEER. AFTER THE CONSTRUCTION IS COMPLETED, THE CONTRACTOR WILL REPLACE THE SIGNS AS DIRECTED BY THE ENGINEER. THIS WORK SHALL BE INCLUDED IN TRAFFIC CONTROL AND PROTECTION (SPECIAL)- LOCATION 1.

AT LOCATION 2, DIAMOND GRINDING AND CRACK SEALING SHALL BE PERFORMED AFTER GATE AND RECESS AREAS ARE FILLED WITH 8" MINIMUM HMA LEVELING BINDER.

THE QUANTITY OF EARTH EXCAVATION IS INCLUDED FOR THE CONSTRUCTION OF HMA AND AGGREGATE SHOULDERS.

THE COST OF THE GATE CONNECTION REPAIR AT LOCATION 2 IS INCLUDED IN THE COST OF CONCRETE STRUCTURES. SEE SHEET 5.

COMMITMENTS: NONE AS OF JUNE 21, 2011. REFER TO COMMITMENT FILE FOR ANY COMMITMENTS AFTER THIS DATE.

MATERIAL USED FOR SEALING THE JOINTS IN THE EXISTING CONCRETE PAVEMENT SHALL CONFORM TO ARTICLE 1050.01 OF THE STANDARD SPECIFICATIONS

MIXTURE REQUIREMENTS

LOCATION(S):	HOT-MIX ASPHALT SURFACE COURSE
MIXTURE USES(S):	HOT-MIX ASPHALT SURFACE COURSE
AC/PG:	PG 64-22
RAP% (MAX):	10%
DESIGN AIR VOIDS:	4% @ Ndes 90
MIXTURE COMPOSITION: (GRADATION MIXTURE)	IL-9.5 MM OR 12.5 MM
FRICTION AGGREGATE:	C SURFACE

LOCATION(S):	LEVELING BINDER (MACHINE METHOD), N90
MIXTURE USES(S):	LEVELING BINDER (MACHINE METHOD), N90
AC/PG:	PG 64-22
RAP% (MAX):	10%
DESIGN AIR VOIDS:	4% @ Ndes 90
MIXTURE COMPOSITION: (GRADATION MIXTURE)	IL-9.5 MM OR 12.5 MM
FRICTION AGGREGATE:	C SURFACE

LOCATION(S):	HOT-MIX ASPHALT SHOULDERS, 8"
MIXTURE USES(S):	HOT-MIX ASPHALT SHOULDERS, 8"
AC/PG:	PG 58-22
RAP% (MAX):	50%
DESIGN AIR VOIDS:	2% @ Ndes 30
MIXTURE COMPOSITION: (GRADATION MIXTURE)	HMA SHOULDERS
FRICTION AGGREGATE:	NONE

Prepared By: *Joe J. ...*
 DISTRICT STUDIES & PLANS ENGINEER
 Examined By: *D. ...*
 DISTRICT LAND ACQUISITION ENGINEER
 Examined By: *Carrie Nelson*
 DISTRICT PROGRAM DEVELOPMENT ENGINEER
 Examined By: *Red ...*
 DISTRICT OPERATIONS ENGINEER
 Examined By: *K. ...*
 DISTRICT CONSTRUCTION ENGINEER
 Examined By: *Bruce ...*
 DISTRICT MATERIALS ENGINEER
 Approved By: *Mary C. ...*
 DEPUTY DIRECTOR OF HIGHWAYS, REGION 5 ENGINEER
 DATE: June 21 2011

FILE NAME =	USER NAME = halsteadtw	DESIGNED -	REVISED -
ct:\p\work\p\dot\halsteadtw\d8262048\l	vee-gate-rep-sht.dgn	DRAWN -	REVISED -
	PLOT SCALE = 10.0000' / 1in.	CHECKED -	REVISED -
	PLOT DATE = 6/21/2011	DATE -	REVISED -

**STATE OF ILLINOIS
 DEPARTMENT OF TRANSPORTATION**

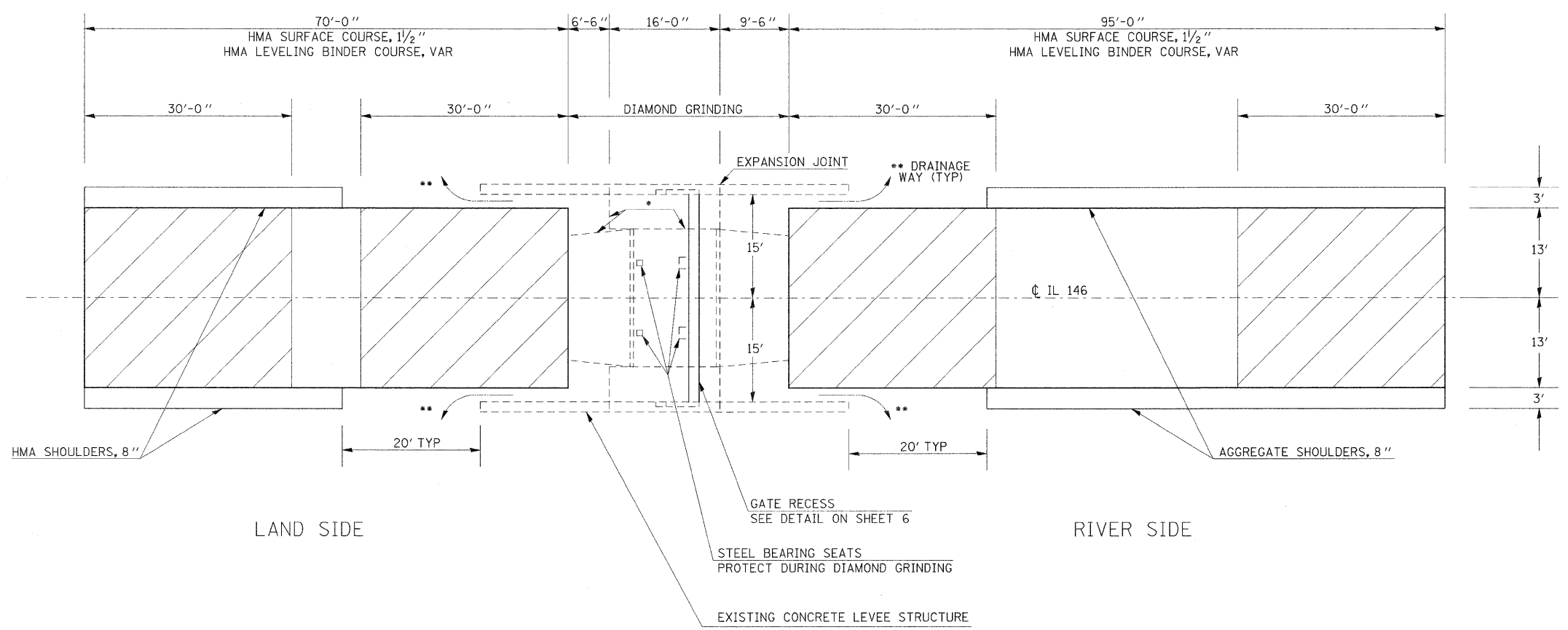
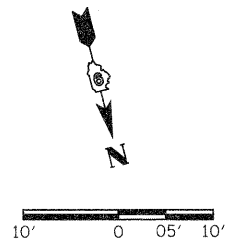
**IL 146
 GOLCONDA LEVEE GATE REPAIRS**

SCALE: SHEET NO. OF SHEETS STA. TO STA.

F.A.P. RTE.	SECTION	COUNTY	TOTAL SHEETS	SHEET NO.
885	(112,7)I-1	POPE	10	2
CONTRACT NO. 78275				
ILLINOIS FED. AID PROJECT				

SUMMARY OF QUANTITIES

RURAL - POPE COUNTY					
CODE NUMBER	ITEM DESCRIPTION	UNIT	TOTAL QUANTITY	100% STATE CONSTRUCTION TYPE CODE	
				0040	0040
				LOCATION 1	LOCATION 2
				QUANTITY	QUANTITY
20200100	EARTH EXCAVATION	CU YD	37	16	21
40600645	LEVELING BINDER (MACHINE METHOD), N90	TON	44	19	25
40600982	HOT-MIX ASPHALT SURFACE REMOVAL - BUTT JOINT	SQ YD	694	347	347
40600990	TEMPORARY RAMP	SQ YD	116	58	58
40603320	HOT- MIX ASPHALT SURFACE COURSE, MIX "C", N90	TON	94	41	53
40600100	BITUMINOUS MATERIALS (PRIME COAT)	GALLON	439	193	246
40600300	AGGREGATE (PRIME COAT)	TON	14	6	8
44000100	PAVEMENT REMOVAL	SQ YD	78		78
44004250	PAVED SHOULDER REMOVAL	SQ YD	189		189
44200966	CLASS B PATCHES, TYPE 1, 10 INCH	SQ YD	4.5		4.5
44213100	PAVEMENT FABRIC	SQ YD	4.5		4.5
48100700	AGGREGATE SHOULDERS, TYPE A 8"	SQ YD	125	74	51
48203100	HOT-MIX ASPHALT SHOULDERS	TON	18		18
50102400	CONCRETE REMOVAL	CU YD	1		1
50300255	CONCRETE SUPERSTRUCTURE	CU YD	1		1
63301000	REMOVE AND REERECT STEEL PLATE BEAM GUARDRAIL	FOOT	135		135
67000400	ENGINEER'S FIELD OFFICE, TYPE A	CAL MO	3	1.5	1.5
67100100	MOBILIZATION	L SUM	1	0.5	0.5
70100450	TRAFFIC CONTROL AND PROTECTION, STANDARD 701201	L SUM	1	0.5	0.5
70100455	TRAFFIC CONTROL AND PROTECTION, STANDARD 701206	L SUM	1		1
70106800	CHANGEABLE MESSAGE SIGN	CAL MO	1		1
78001110	PAINT PAVEMENT MARKING - LINE 4"	FOOT	1416	631	785
78100100	RAISED REFLECTIVE PAVEMENT MARKER	EACH	4	2	2
X0326767	PROFILE DIAMOND GRINDING CONCRETE PAVEMENT	SQ YD	214	107	107
Z0010614	CLEANING EXISTING MANHOLE OR HANDHOLE	EACH	1		1
Z0064300	SEALING CRACKS	FOOT	264	132	132

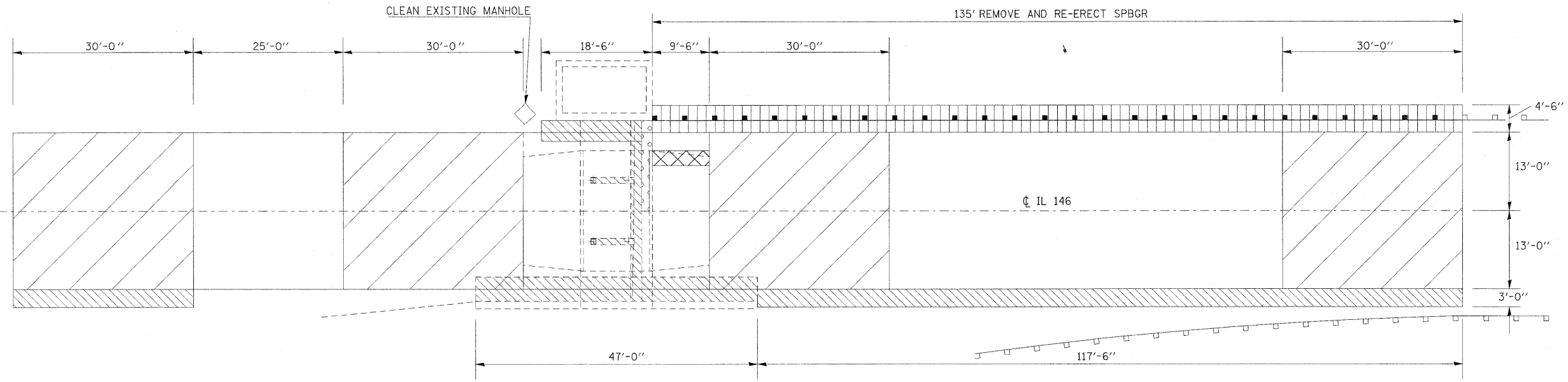
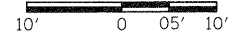


- SEAL EXISTING EXPANSION JOINTS IN EXISTING CONCRETE PAVEMENT
- EXISTING DRAINAGE WAY TO BE MAINTAINED DURING AND AFTER CONSTRUCTION

LOCATION 1 - WEST ENTRANCE

- BITUMINOUS SURFACE REMOVAL (BUTT JOINT)

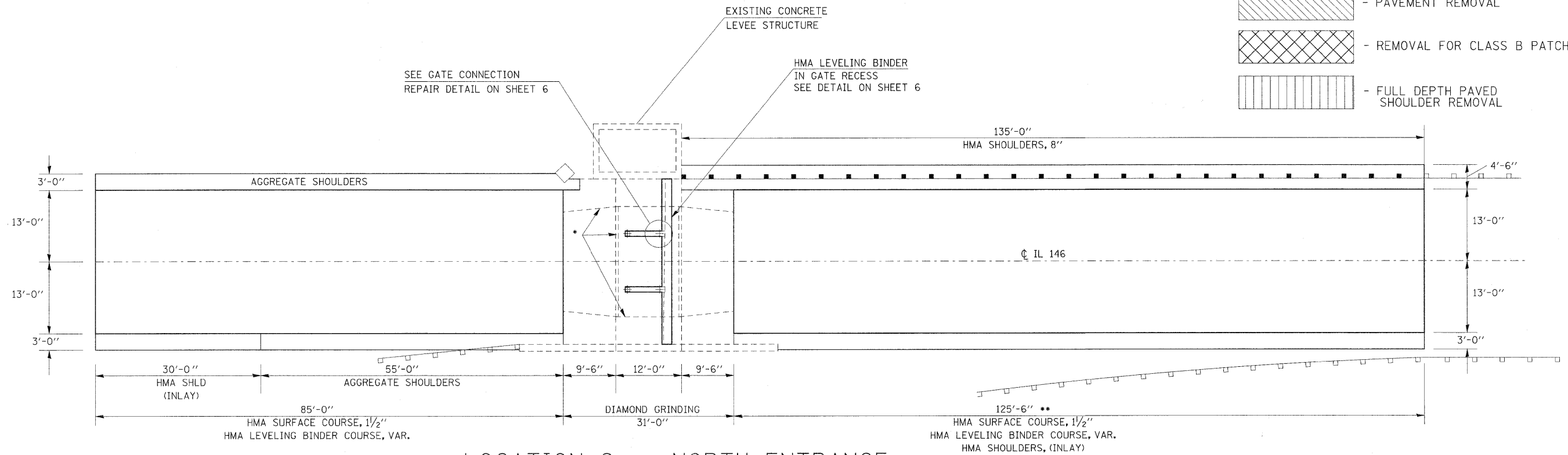
FILE NAME =	USER NAME = parterwo	DESIGNED -	REVISED -	STATE OF ILLINOIS DEPARTMENT OF TRANSPORTATION	IL 146 GOLCONDA LEVEE GATE REPAIRS			F.A.P. RTE. 885	SECTION (112,7)I-1	COUNTY POPE	TOTAL SHEETS 10	SHEET NO. 4
ca\pwork\pwork\parterwo\d8262848\Levee-gate-rep-sht.dgn		DRAWN -	REVISED -		SCALE: SHEET NO. OF SHEETS STA. TO STA.			CONTRACT NO. 78275				
		CHECKED -	REVISED -		ILLINOIS FED. AID PROJECT							
		DATE -	REVISED -									



NOTE:
REMOVAL OF EXISTING 4" PVC DRAIN PIPES
IS INCLUDED IN THE COST OF PAVEMENT REMOVAL

LOCATION 2 - NORTH ENTRANCE REMOVAL

- HMA SURFACE REMOVAL (BUTT JOINT)
- CONCRETE REMOVAL FOR CONCRETE STRUCTURES
- PAVEMENT REMOVAL
- REMOVAL FOR CLASS B PATCH
- FULL DEPTH PAVED SHOULDER REMOVAL

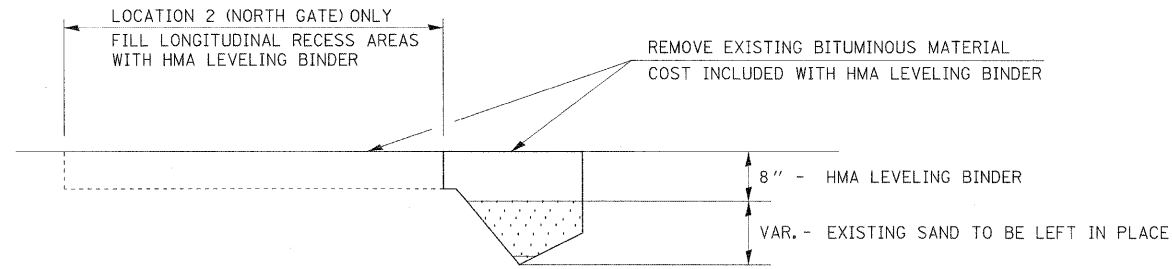


- * SEAL EXISTING JOINTS IN CONCRETE PAVEMENT
- ** PROVIDE EVEN SUPER TRANSITION FROM EXISTING CONCRETE TO NORTH BUTT JOINT

LOCATION 2 - NORTH ENTRANCE PROPOSED

FILE NAME =	USER NAME = detersingj	DESIGNED -	REVISED -	STATE OF ILLINOIS DEPARTMENT OF TRANSPORTATION	IL 146 GOLCONDA LEVEE GATE REPAIRS			F.A.P. RTE. 885	SECTION (112,7)I-1	COUNTY POPE	TOTAL SHEETS 10	SHEET NO. 5
c:\pw_work\pwidot\detersingj\d0262048\leves-gate-rep-sht.dgn	PLOT SCALE = 10.0000' / in.	DRAWN -	REVISED -		SCALE:	SHEET NO.	OF SHEETS	STA.	TO STA.	CONTRACT NO. 78275		
PLOT DATE = 6/22/2011	DATE -	CHECKED -	REVISED -		ILLINOIS FED. AID PROJECT							
		DATE -	REVISED -									

GATE RECESS DETAIL



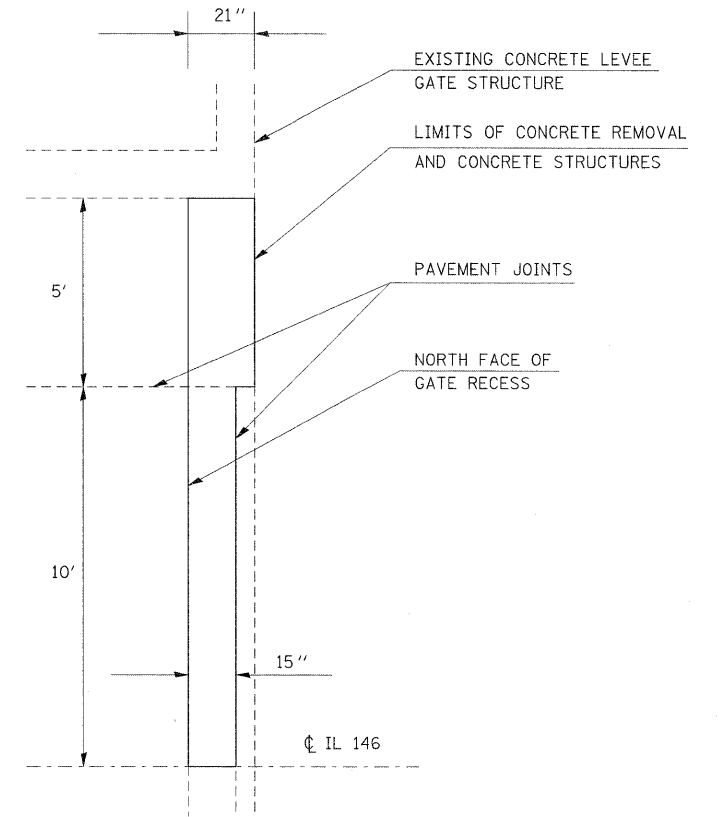
CONCRETE STRUCTURE DETAIL

NOTES:

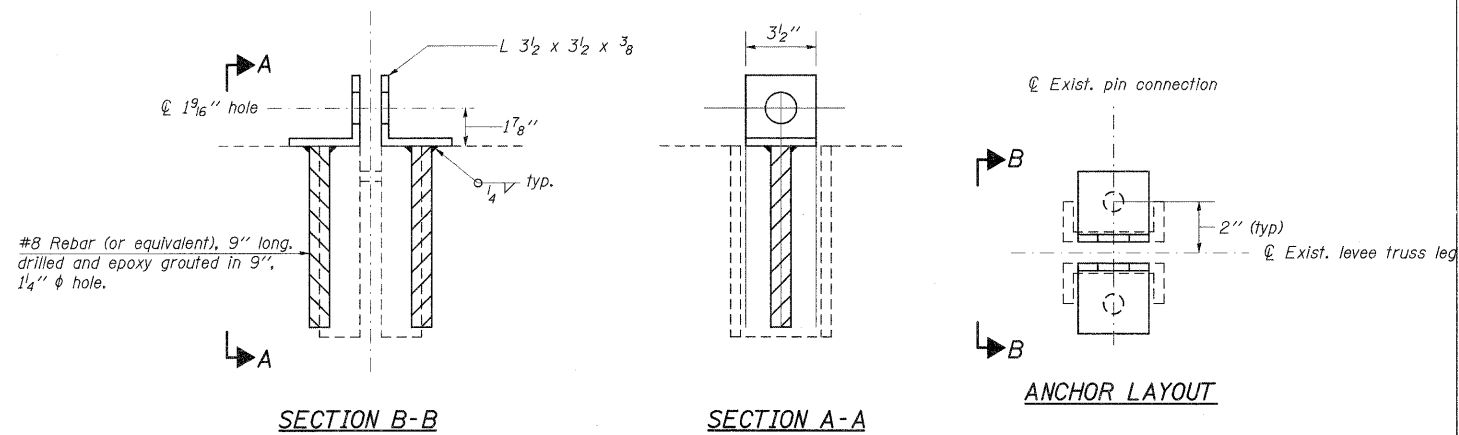
Existing reinforcement shall be cleaned and incorporated into the new construction. Cost included with Concrete Removal.

Depth of removal is 12"

Dowell into existing concrete with #5 bars every 2'. Cost to be included with cost of CONCRETE STRUCTURES

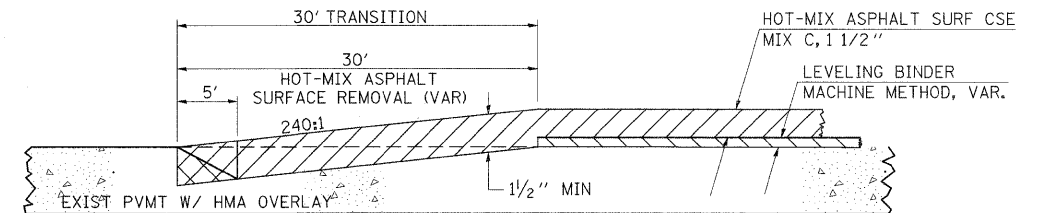
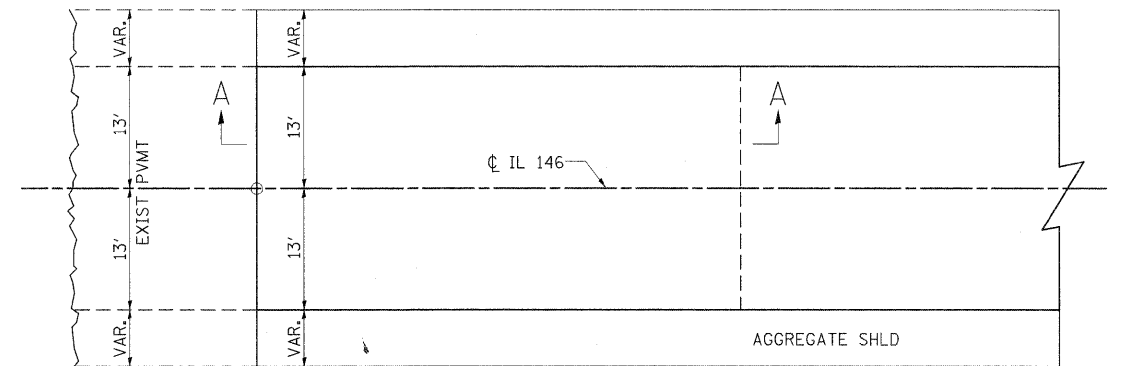


GATE CONNECTION REPAIR DETAIL



NOTE:
Grind the existing channels flush with the top of the existing concrete.
All steel shall be M270 Gr. 36 and shall be primed with an inorganic zinc rich paint.

BUTT JOINT



5' TEMPORARY RAMP AT 40:1

REVISIONS	
DRAWN	10-17-90
REVISED	01-11-07
REVISED	3-25-08
REVISED	

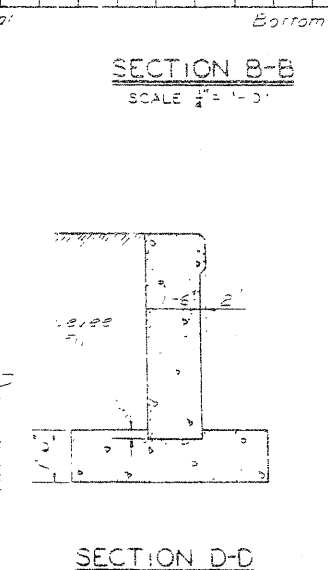
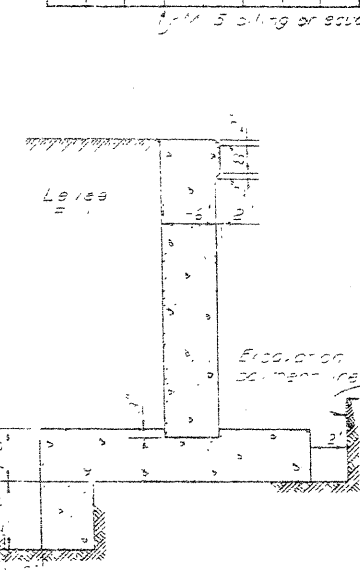
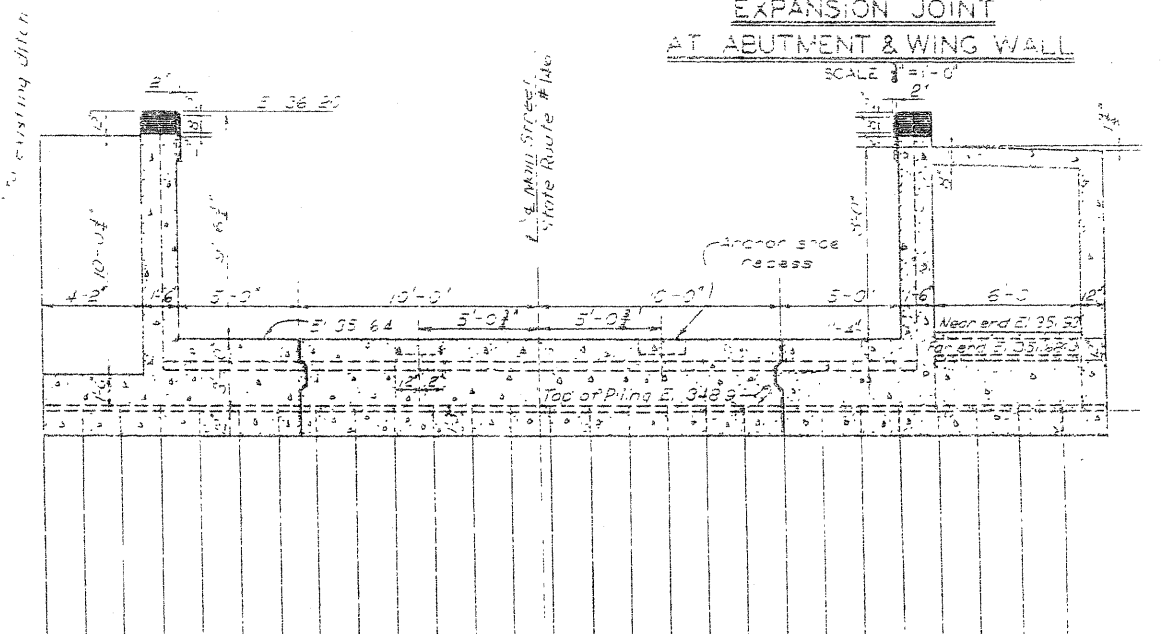
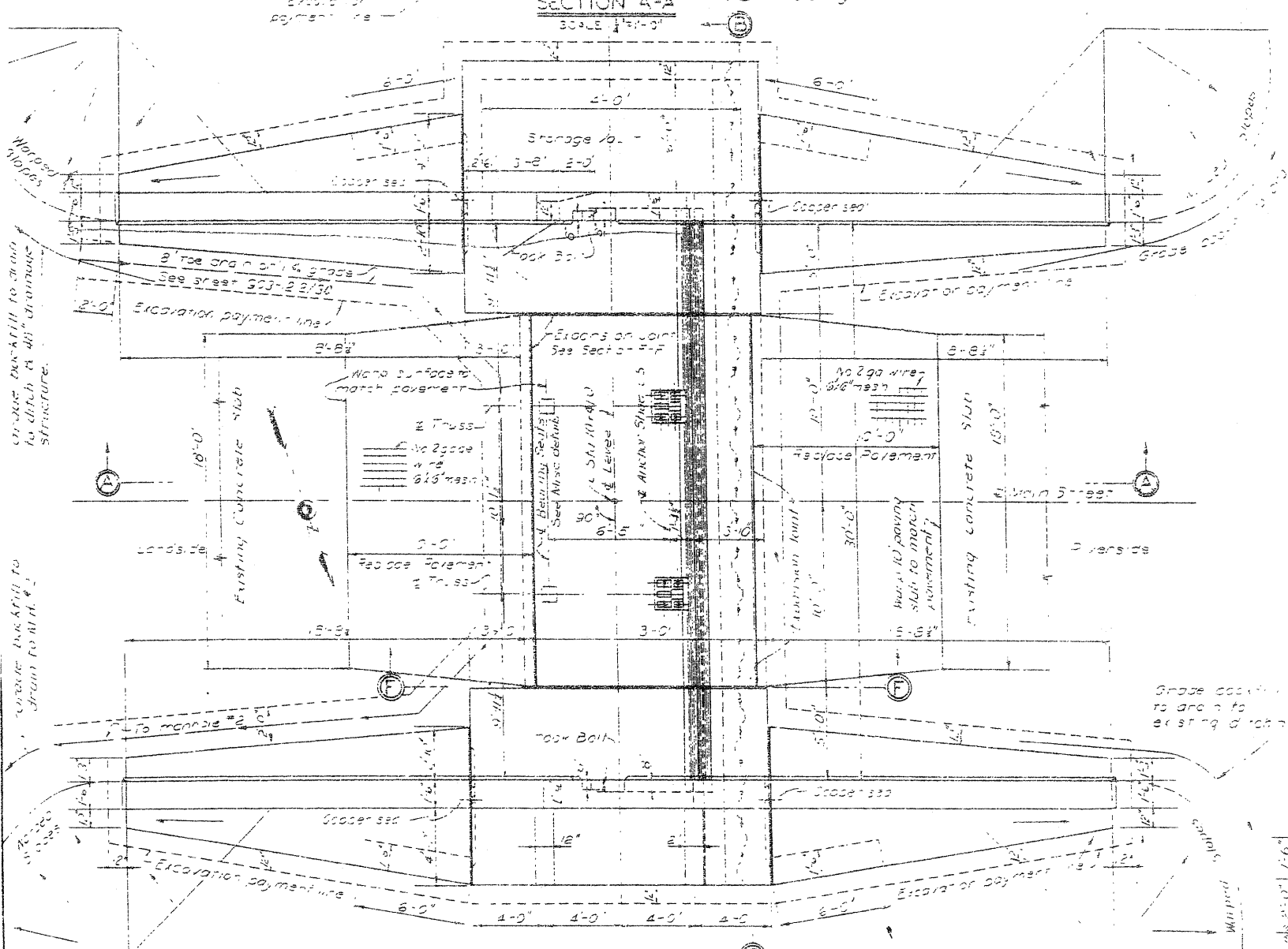
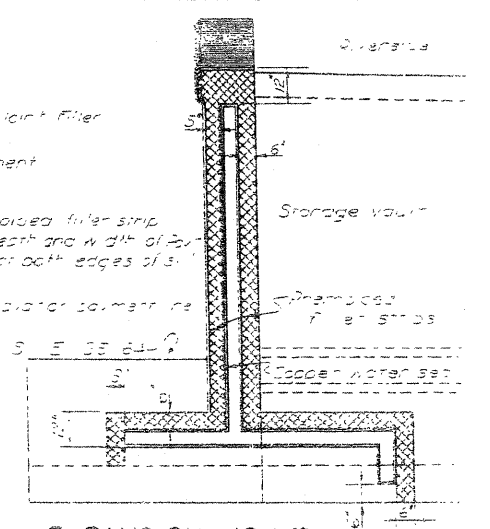
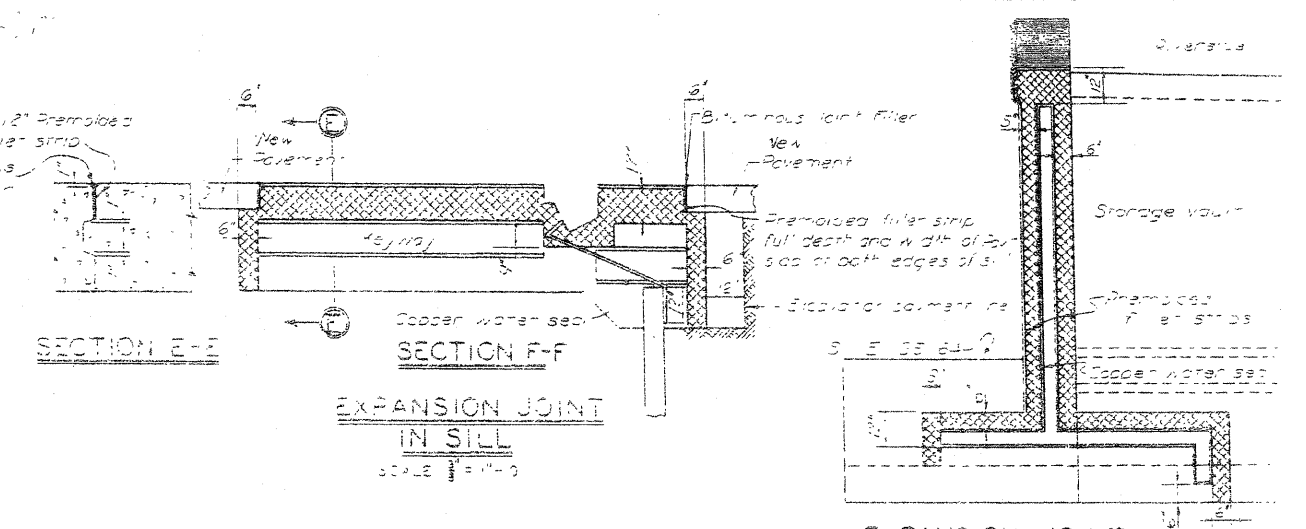
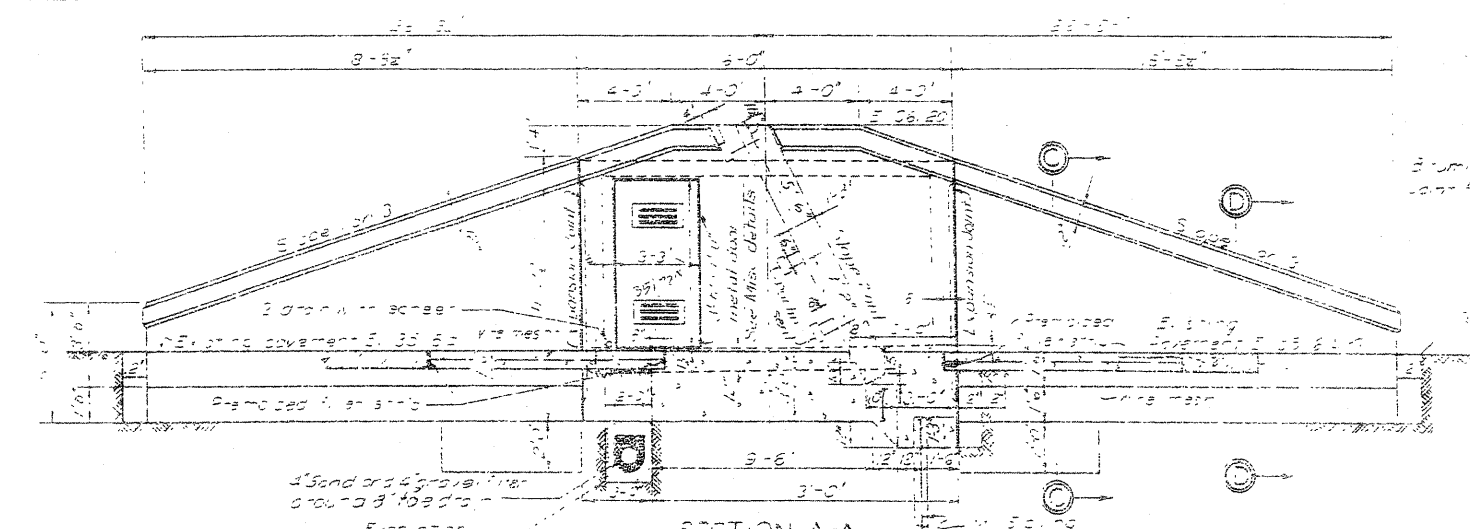
FILE NAME =	USER NAME = detersdngj	DESIGNED -	REVISED -
c:\pe_work\pwt\dot\detersdngj\d0262048\levee-gate-rep-sht.dgn		DRAWN -	REVISED -
	PLOT SCALE = 50.0000' / in.	CHECKED -	REVISED -
	PLOT DATE = 6/22/2011	DATE -	REVISED -

STATE OF ILLINOIS
DEPARTMENT OF TRANSPORTATION

DETAILS: GATE RECESS, CONCRETE STRUCTURES
GATE CONNECTION REPAIR, AND BUTT JOINT

F.A.P. RTE. 885	SECTION (112.7)1-1	COUNTY POPE	TOTAL SHEETS 10	SHEET NO. 6
CONTRACT NO. 78275				
ILLINOIS FED. AID PROJECT				

STD. 9-86



General Notes
 1. Excavated corners of concrete are not to exceed as shown.
 2. Top of all horizontal expansion joints sealed with continuous joint filler.
 3. For reinforcing details see sheets.
 4. For miscellaneous details see sheet.
 5. Point back face of wing walls and E 35.5 to embankment lines.

CHS 10129 BAS
 FLOOD PROTECTION GOLF
 MASONRY DETAILS STA
 SHEET 18 OF 44 SHEETS
 U.S. ENGINEER OFFICE LOUISVILLE
 SUBMITTED *S. B.*
 SENIOR ENGR
 APPROVAL RECOMMENDED *[Signature]*
 APPR
 2407 CORP OF ENGINEERS
 509 BY JAK HW TO BY NKS

NO.	DATE	REVISIONS
1		FB 2-4-C-D B revised & street pavement changed.
2	1-15-40	Minor revisions

PLAN
 SCALE 1/4" = 1'-0"

SECTION B-B
 SCALE 1/4" = 1'-0"

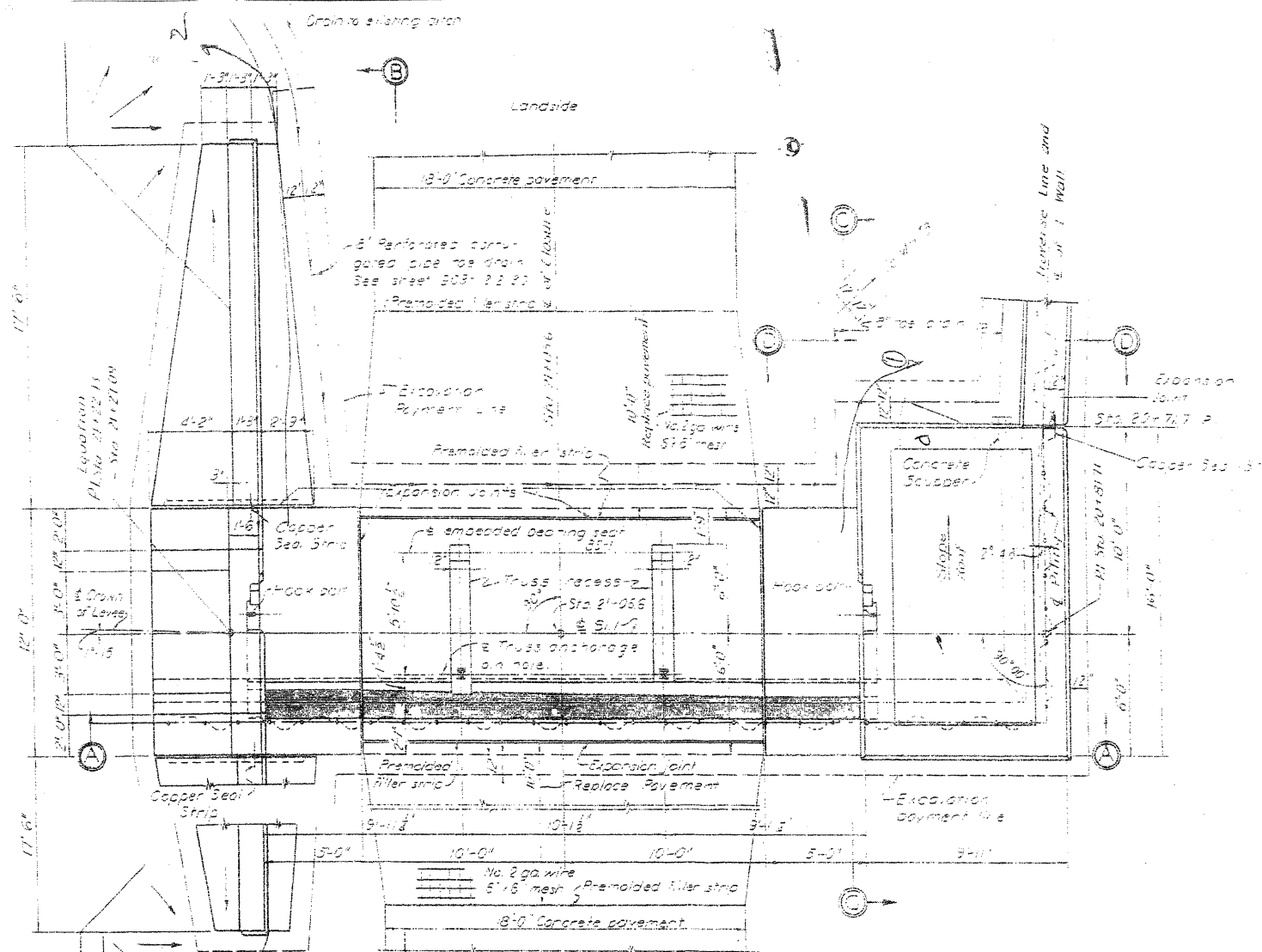
SECTION C-C
 SCALE 1/4" = 1'-0"

SECTION D-D
 SCALE 1/4" = 1'-0"

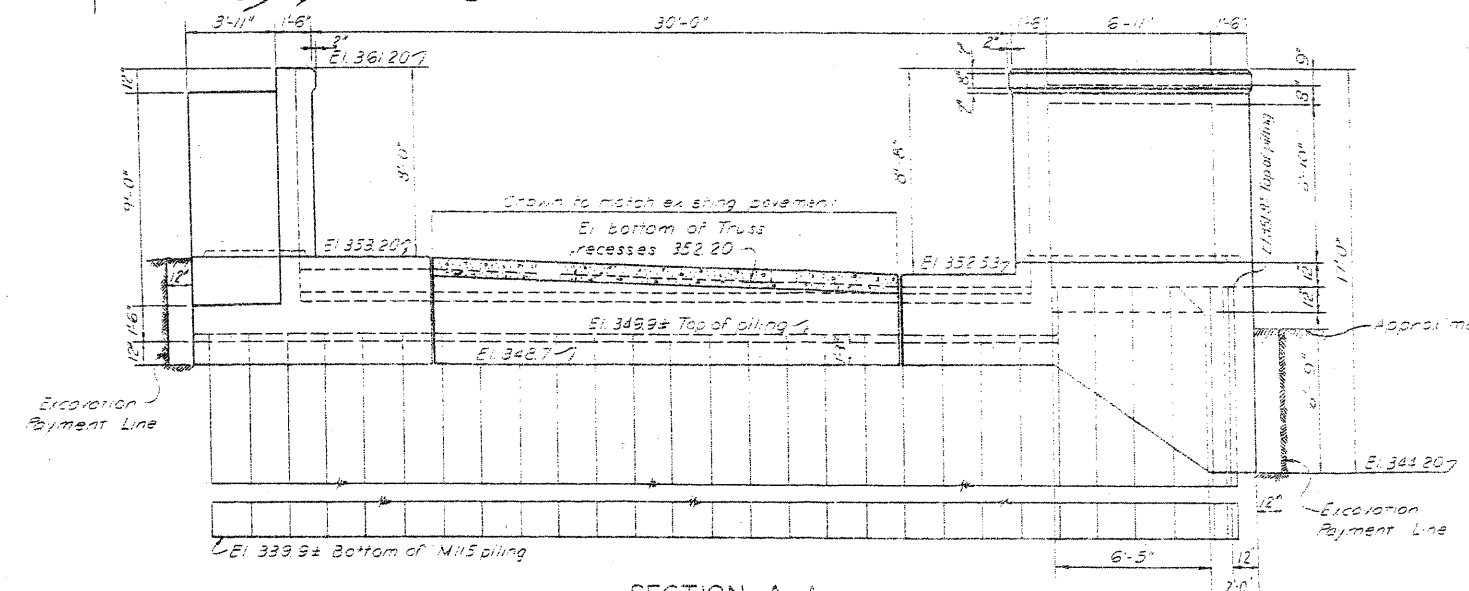
STATE OF ILLINOIS
 DEPARTMENT OF TRANSPORTATION

FILE NAME	USER NAME	DESIGNED	REVISED	SCALE	SHEET NO.	OF SHEETS	STA.	TO STA.	F.A.P. RTE.	SECTION	COUNTY	TOTAL SHEETS	SHEET NO.
ct:\p\work\p\dot\h\alstead\168211660\04	halsteadtw	-	-	1/4" = 1'-0"	18	44			885	(112,701-1)	POPE	10	1

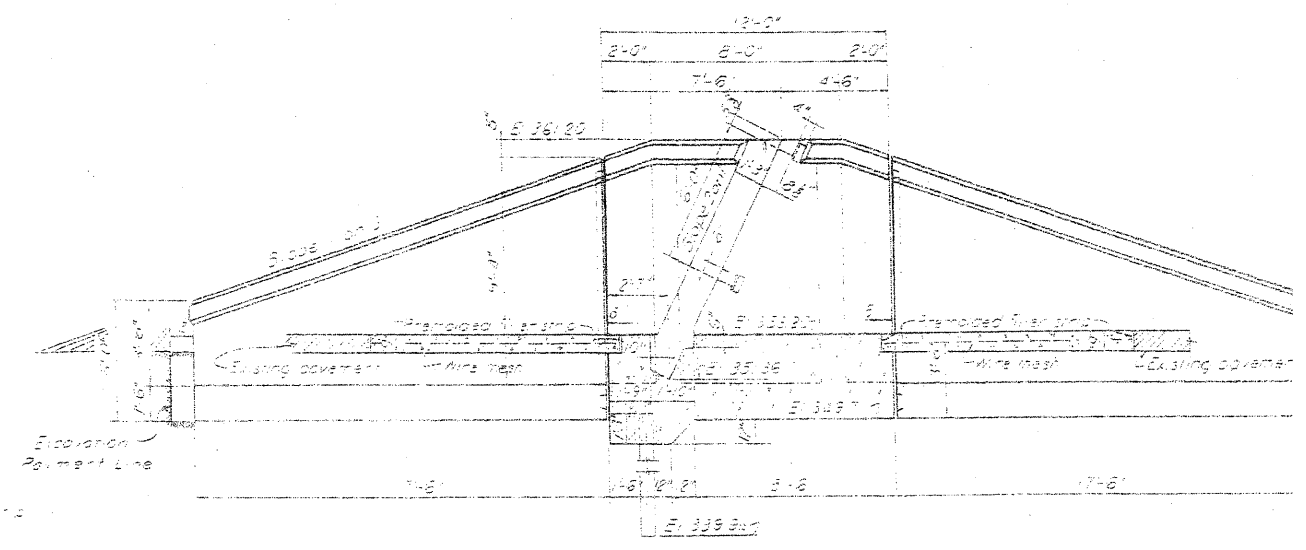
CONTRACT NO. 78275
 ILLINOIS FED. AID PROJECT



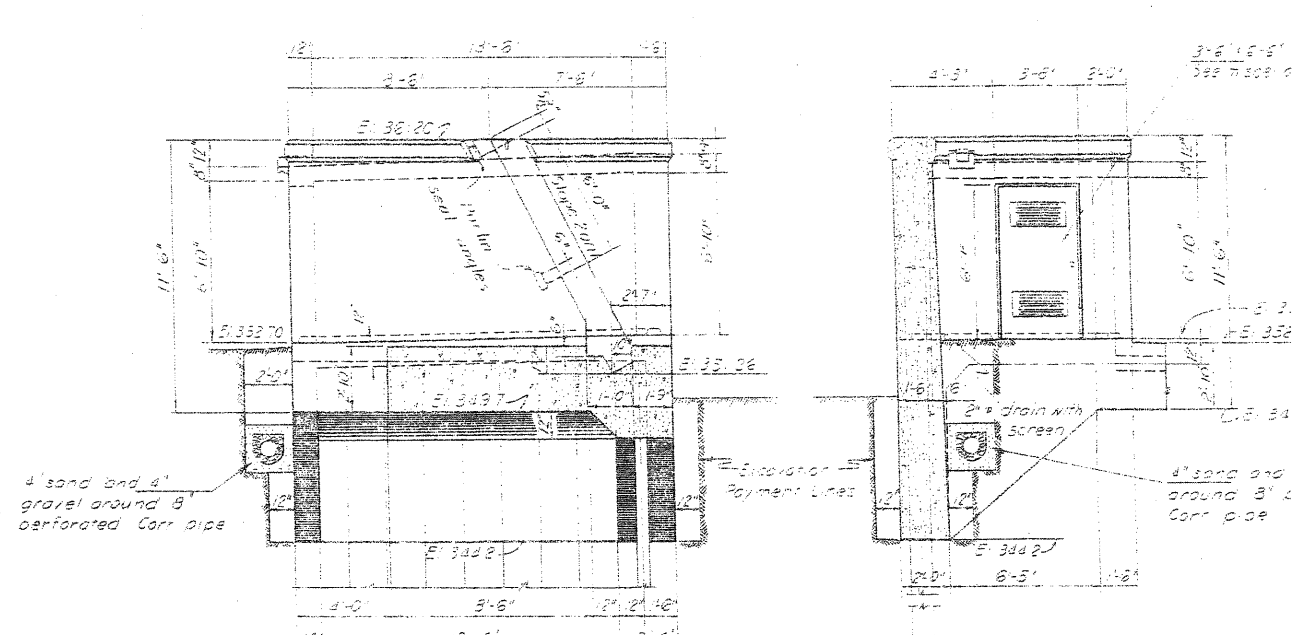
PLAN



SECTION A-A



SECTION B-B



SECTION C-C

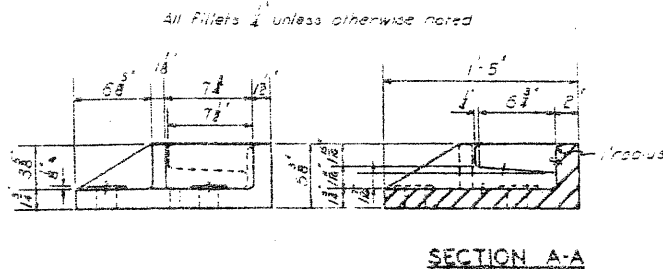
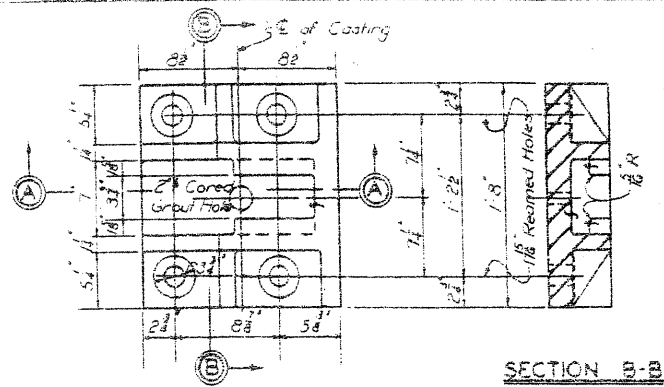
SECTION D-D

General Notes
 All exposed corners of concrete shall be chamfered one inch except as shown.
 Top of all horizontal expansion joints shall be sealed with bituminous joint filler.
 For reinforcing details see sheets 903-12/25, 26 & 27.
 For miscellaneous details see sheets 903-22/28 & 29.
 For applicable expansion joint details see sheet 903-12/2/18 & 28.
 Paint back face of wing wall above E1.352.0 to embankment lines.

OHIO RIVER BASIN
 FLOOD PROTECTION GOLCC
 MASONRY DETAILS STA

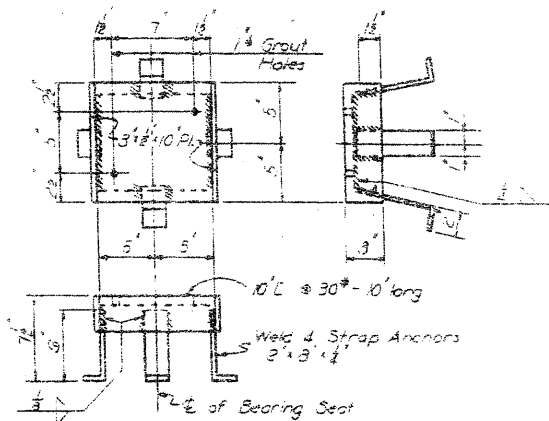
SHEET 24 OF 44 SHEETS
 U.S. ENGINEER OFFICE LOUISVILLE, KY
 SUBMITTED: *S. H. Rain*
 APPROVAL RECOMMENDED: *[Signature]*
 CAPT. CORPS OF ENGINEERS
 OR BY F.H.C. TR BY E.C.C.

BY	DATE	CHARACTER	REVISIONS
FBF	4-10-40	Sill revised & highway slab changed.	
FBF	3-26-40	Embedded bearing seat added in sill.	
HWL	1-15-40	Corrected ground line.	



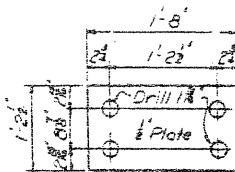
ANCHOR SHOE

MARK C5 MAKE 2 WEIGHT 242# EACH
MATERIAL - MEDIUM CAST STEEL
SCALE: 1/2" = 1'-0"



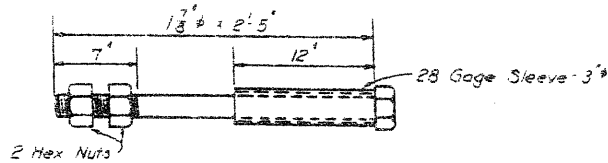
EMBEDDED BEARING SEAT

MARK B5I MAKE 4 WEIGHT 42.0# EACH
MATERIAL - STRUCTURAL STEEL
SCALE: 1/2" = 1'-0"



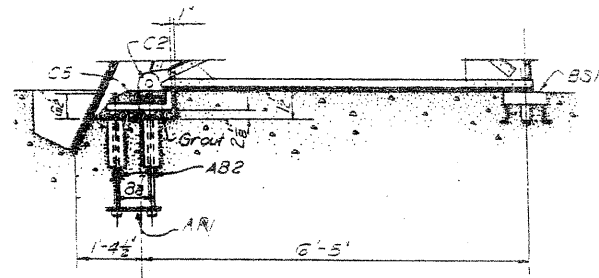
ANCHOR PLATE

MARK A1I MAKE 2 WEIGHT 39.4# EACH
MATERIAL - STRUCTURAL STEEL
SCALE: 1" = 1'-0"



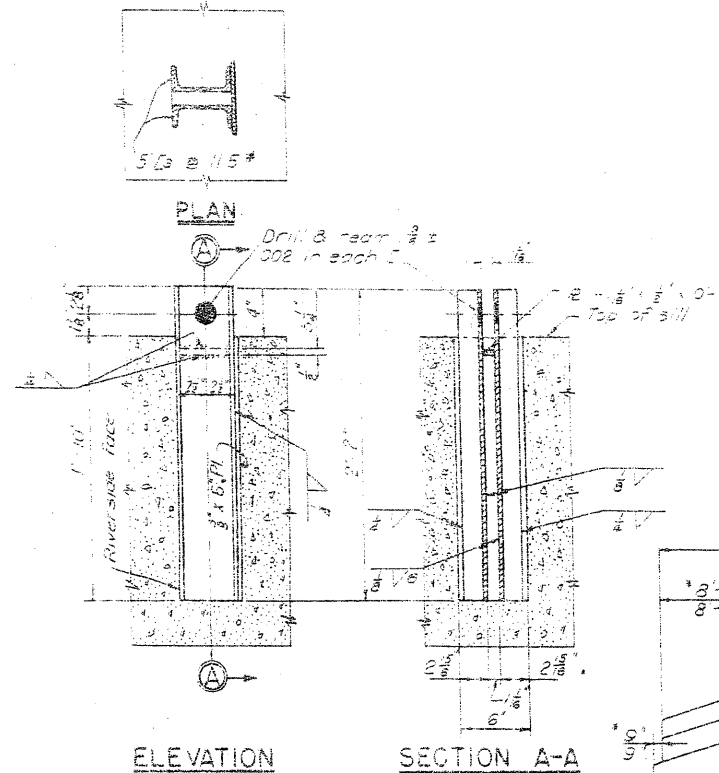
ANCHOR BOLT

MARK A2I MAKE 8 WEIGHT 31.3# EACH
MATERIAL - CORR. RESISTANT STEEL
SCALE: 1/2" = 1'-0"



TRUSS & ANCHOR ASSEMBLY

STA. 10+41.0
SCALE: 1/2" = 1'-0"

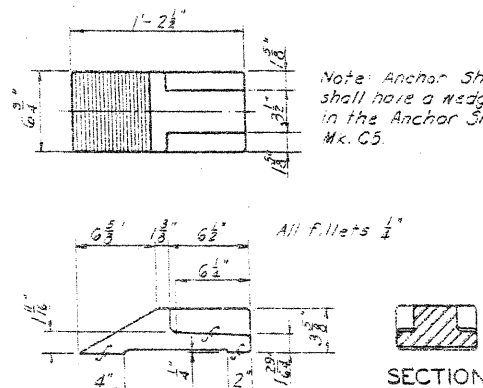


ELEVATION

SECTION A-A

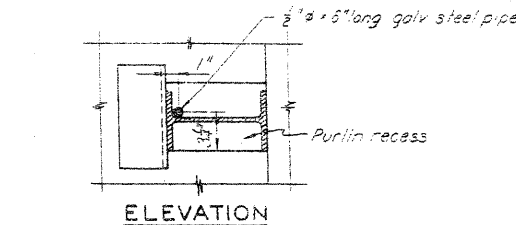
TRUSS ANCHORAGE

MARK A2I MAKE 2 WT. 64# EACH
MATERIAL - STRUCTURAL NICKEL STEEL
SCALE: 1 1/2" = 1'-0"



ANCHOR SHOE PLUG

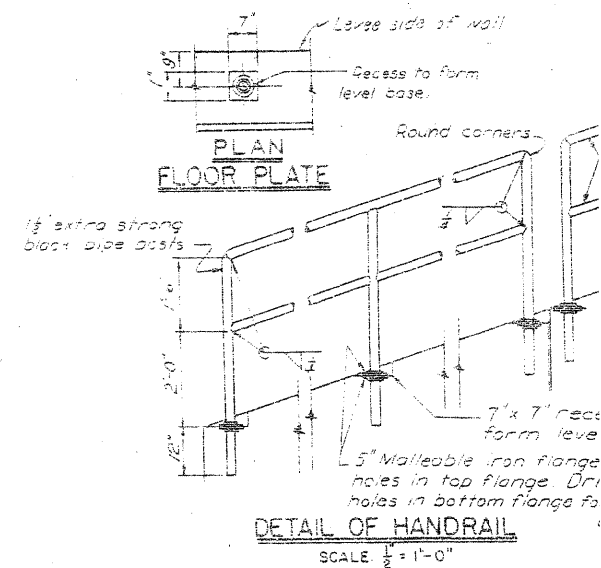
MARK S1I MAKE 2 WEIGHT 60# EACH
MATERIAL - MEDIUM CAST STEEL
SCALE: 1 1/2" = 1'-0"



ELEVATION

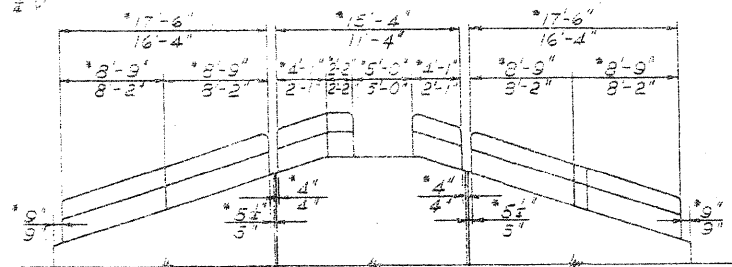
LOCATION OF PIPE INSERT

MARK P1I MAKE 4 WEIGHT 0.43# EACH
MATERIAL - GALVANIZED STEEL
SCALE: 1 1/2" = 1'-0"



DETAIL OF HANDRAIL

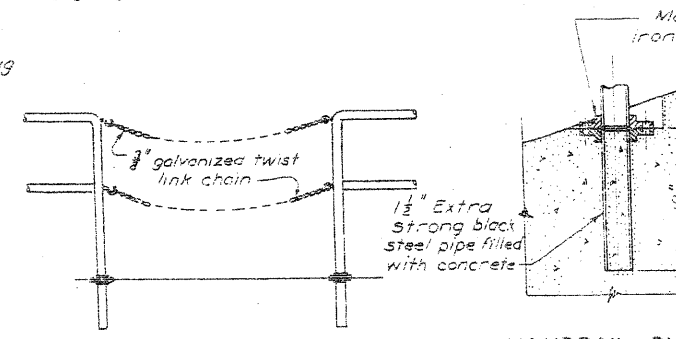
SCALE: 1/2" = 1'-0"



LINE DIAGRAM OF HANDRAIL ELEVATION

STATIONS 10+41.0 & 21+05.6 (EAST ABUTMENT ONLY)

Note: Dimensions shown thus * for Sta. 10+41.0 only - other dimensions for Sta. 21+05.6



HANDRAIL SURROUND

SCALE: 1/2" = 1'-0"

DETAILS OF HANDRAIL AT SHEETING RECESS

SCALE: 1/2" = 1'-0"

BY	DATE	CHARACTER
F3.F	3-12-40	Location of Pipe Insert detail added.
F3.F	3-12-40	Anchor bolt, plate & bearing seat weights revised.
F3.F	3-12-40	Truss anchor revised, hand rail revised.
H.W.L.	1-15-40	Handrail added for movable closures.

REVISIONS

FILE NAME	USER NAME	DESIGNED	REVISIONS
ct:\p\work\p\dot\halstead\102211668\04	halsteadtw	-	-
	0012_0013\sh\plandgn	DRAWN	REVISIONS
	PLOT SCALE = 50.000000 / in.	CHECKED	REVISIONS
	PLOT DATE = 6/21/2011	DATE	REVISIONS

**STATE OF ILLINOIS
DEPARTMENT OF TRANSPORTATION**

SCALE: SHEET NO. OF SHEETS STA. TO STA.

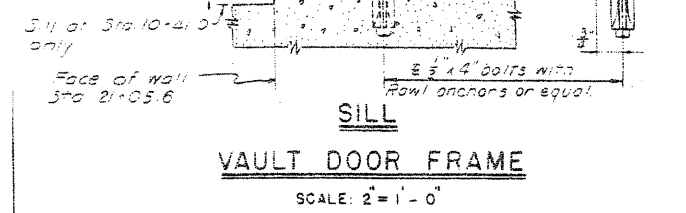
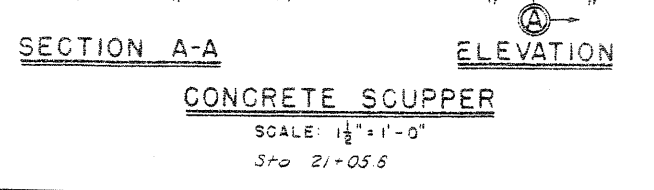
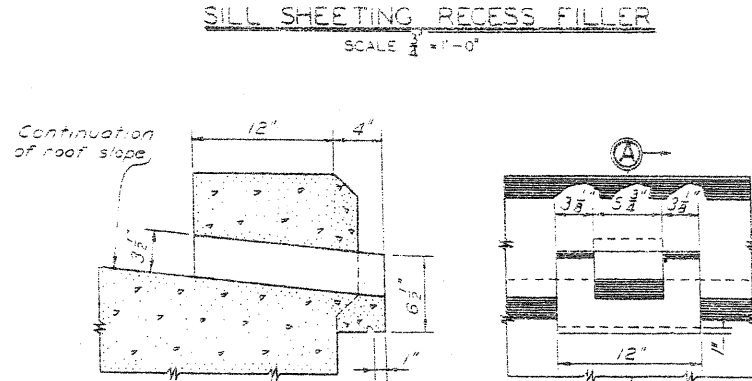
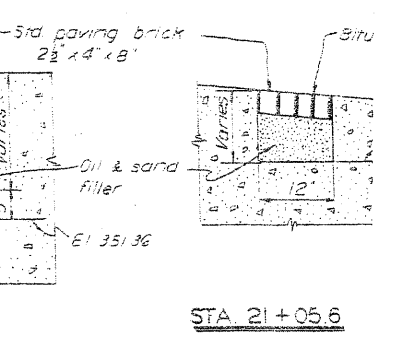
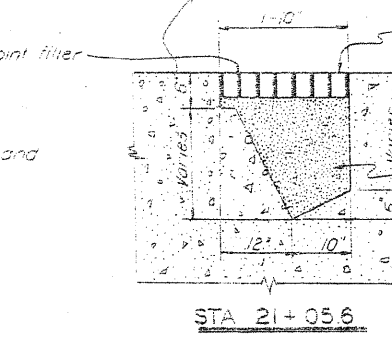
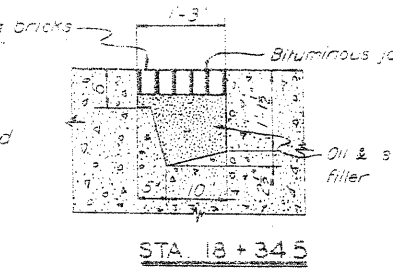
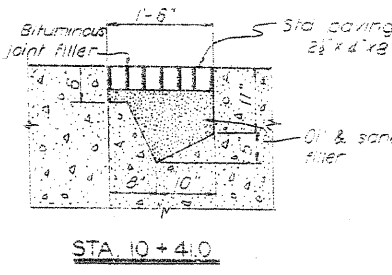
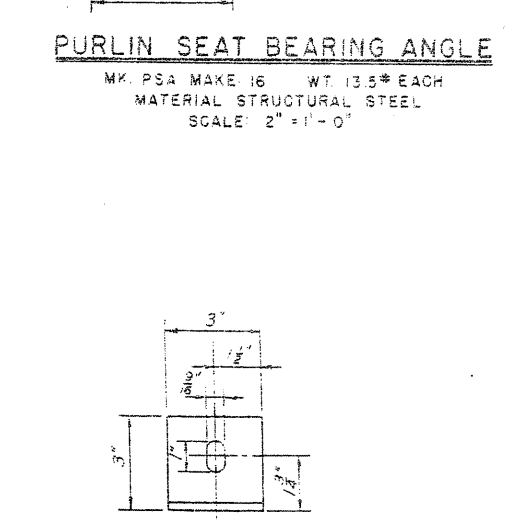
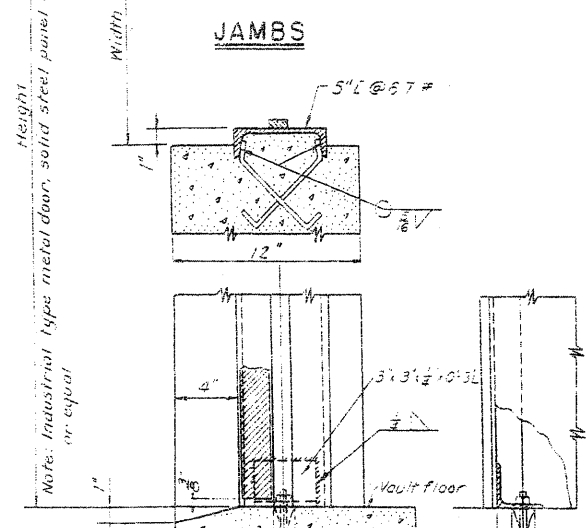
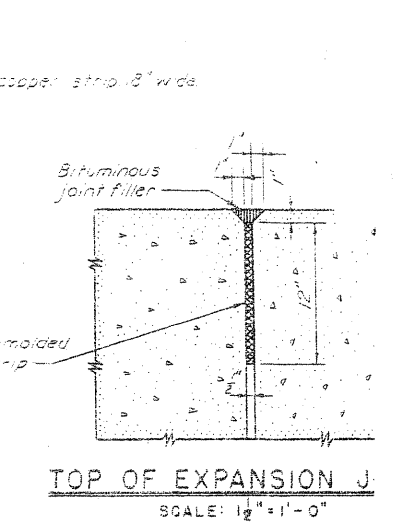
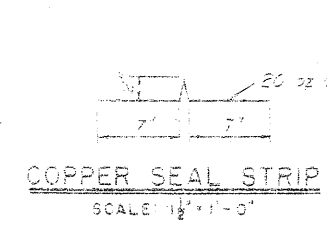
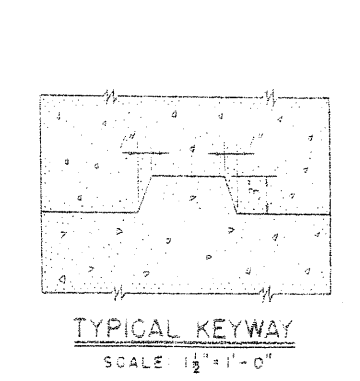
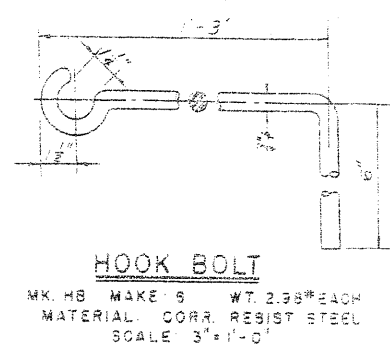
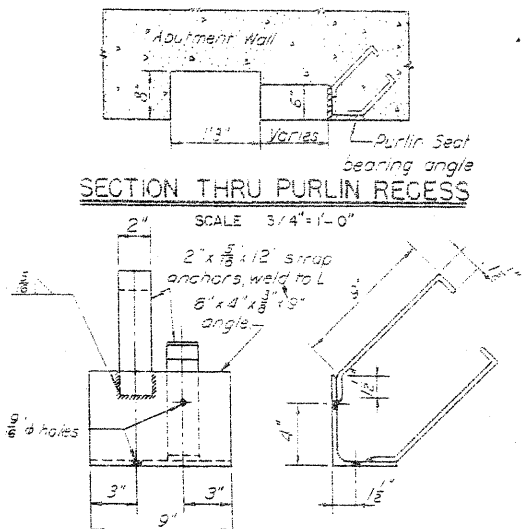
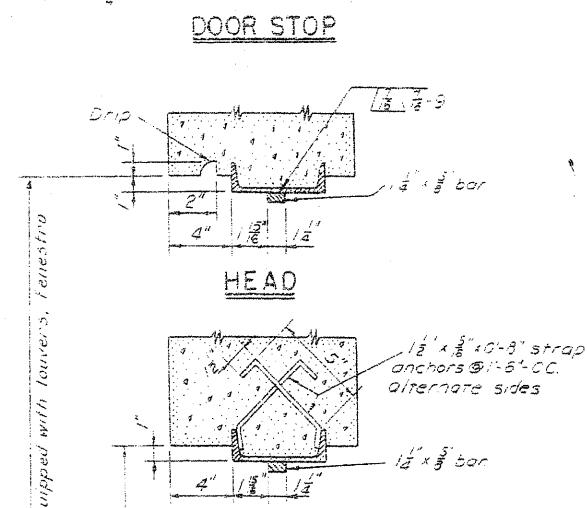
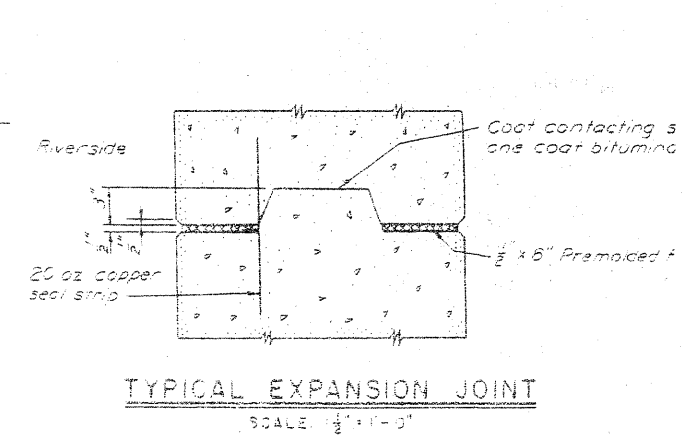
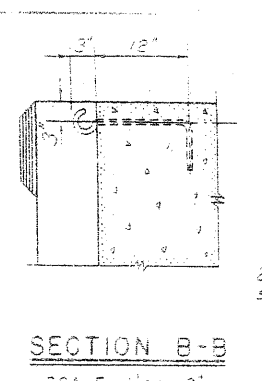
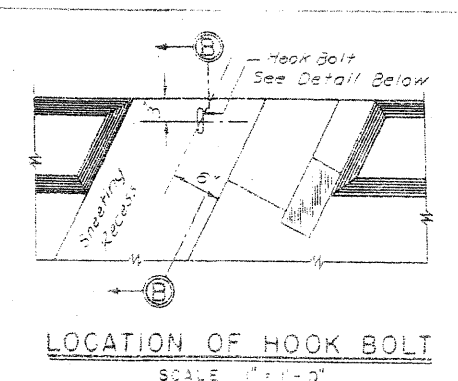
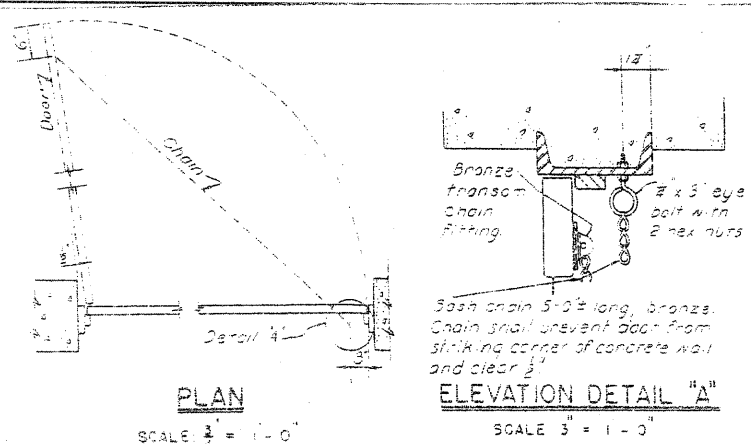
OHIO RIVER BASIN
FLOOD PROTECTION GOLCC
MISCELLANEOUS DE

SHEET 29 OF 44 SHEETS
U.S. ENGINEER OFFICE, LOUISVILLE, KY

SUBMITTED: [Signature]
APPROVAL RECOMMENDED: [Signature]
CAPT. CORPS OF ENGINEERS

DR. BY W.J.S. - R.M.R. TR. BY H.W.B.

F.A.P. RTE.	SECTION	COUNTY	TOTAL SHEETS	SHEET NO.
885	(112,7)-1	POPE	10	9
CONTRACT NO. 78275				
ILLINOIS FED. AID PROJECT				



DOOR OPENING SCHEDULE		
STATION	HEIGHT	WIDTH
10+41.0	7'-1"	3'-8"
21+05.6	6'-7"	3'-5"

BY	DATE	REVISIONS
F.B.F.	3-12-40	Vault door frame revision and door stop added.
H.W.L.	1-19-40	Ladder rung detail transferred to sheet 903-12/22
H.W.L.	1-15-40	Detailed purlin seat angle

FILE NAME	USER NAME	DESIGNED	REVISOR
ct:\pw\work\pwwdot\halstead\0211668\04	halsteadw	-	-
	0012.0013ht-plan.dgn	DRAWN	REVISOR
	PLOT SCALE = 50.00000 ' / in.	CHECKED	REVISOR
	PLOT DATE = 6/21/2011	DATE	REVISOR

STATE OF ILLINOIS
DEPARTMENT OF TRANSPORTATION

SCALE:	SHEET NO.	OF SHEETS	STA.	TO STA.

OHIO RIVER BASIN
FLOOD PROTECTION G
MISCELLANEOUS

SHEET 28 OF 44 SHEETS
U.S. ENGINEER OFFICE, LOUISVILLE

SUBMITTED: *[Signature]*
SENIOR ENGINEER

APPROVAL RECOMMENDED: *[Signature]*
APPF
CHIEF SURVEYOR OF ENGINEERS

DR. BY G.C.B. TR. BY D.B.G.

F.A.P. RTE.	SECTION	COUNTY	TOTAL SHEETS	SHEET NO.
885	(112,7)-1	POPE	10	10

CONTRACT NO. 78275
ILLINOIS FED. AID PROJECT