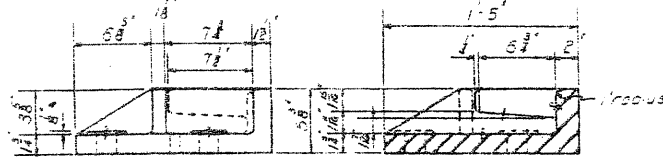
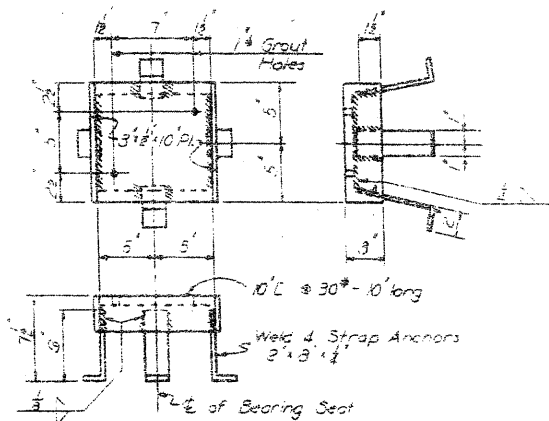


All fillets 1/4" unless otherwise noted



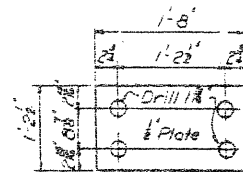
ANCHOR SHOE

MARK C5 MAKE 2 WEIGHT 242# EACH
MATERIAL - MEDIUM CAST STEEL
SCALE: 1/2" = 1'-0"



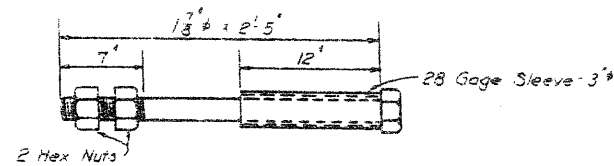
EMBEDDED BEARING SEAT

MARK B5I MAKE 4 WEIGHT 42.0# EACH
MATERIAL - STRUCTURAL STEEL
SCALE: 1/2" = 1'-0"



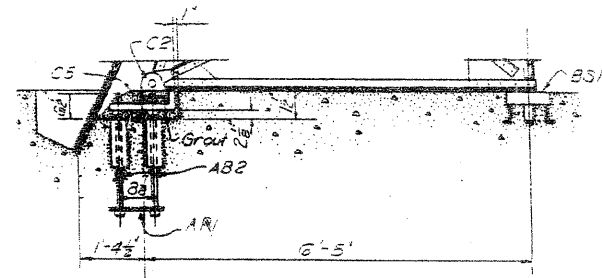
ANCHOR PLATE

MARK A5I MAKE 2 WEIGHT 39.4# EACH
MATERIAL - STRUCTURAL STEEL
SCALE: 1" = 1'-0"



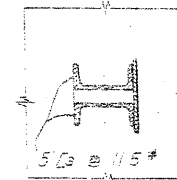
ANCHOR BOLT

MARK A52 MAKE 8 WEIGHT 31.3# EACH
MATERIAL - CORR. RESISTANT STEEL
SCALE: 1/2" = 1'-0"

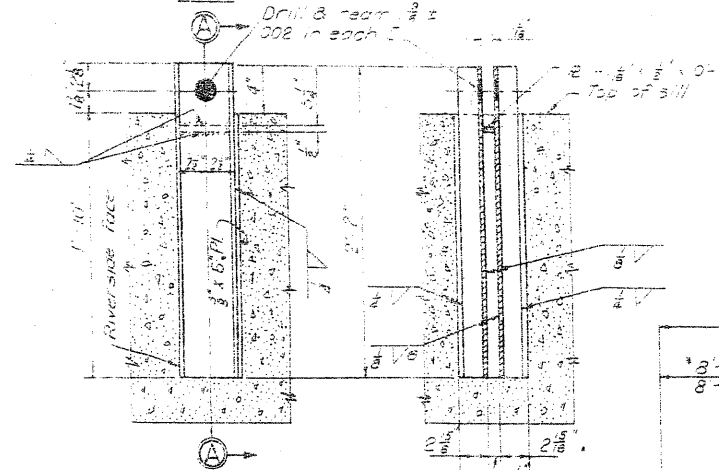


TRUSS & ANCHOR ASSEMBLY

STA. 10+41.0
SCALE: 1/2" = 1'-0"



PLAN

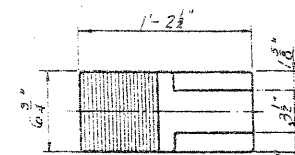


ELEVATION

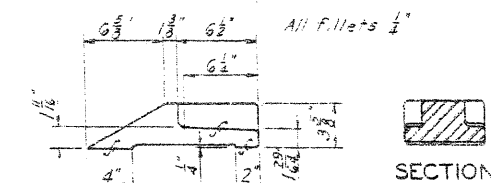
SECTION A-A

TRUSS ANCHORAGE

MARK T22 MAKE 2 WT. 64# EACH
MATERIAL - STRUCTURAL NICKEL STEEL
SCALE: 1 1/2" = 1'-0"



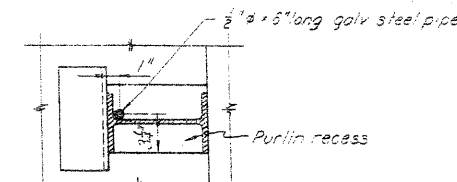
Note: Anchor shoe plug shall have a wedge fit in the anchor shoe Mk. C5



SECTION

ANCHOR SHOE PLUG

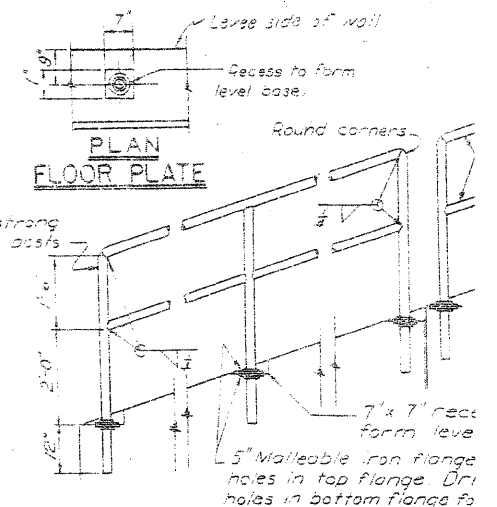
MARK S5I MAKE 2 WEIGHT 60# EACH
MATERIAL - MEDIUM CAST STEEL
SCALE: 1 1/2" = 1'-0"



ELEVATION

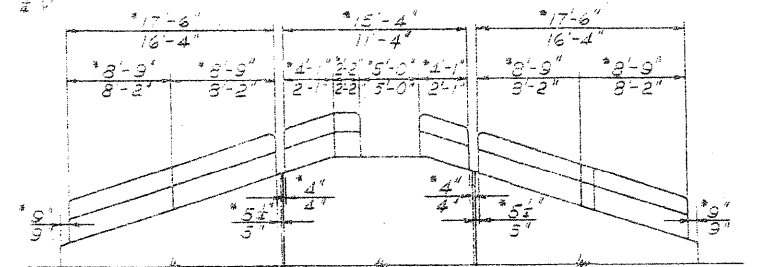
LOCATION OF PIPE INSERT

MARK P1 MAKE 4 WEIGHT 0.43# EACH
MATERIAL - GALVANIZED STEEL
SCALE: 1 1/2" = 1'-0"



DETAIL OF HANDRAIL

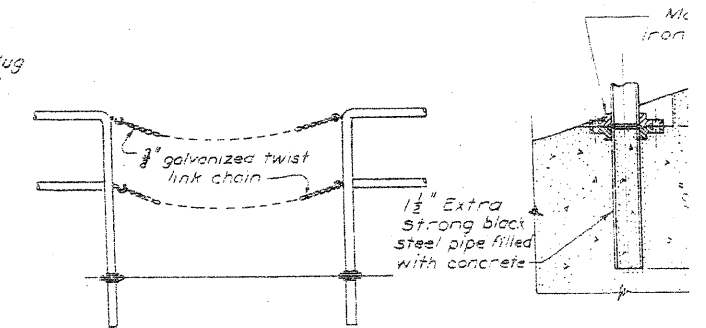
SCALE: 1/2" = 1'-0"



LINE DIAGRAM OF HANDRAIL ELEVATION

STATIONS 10+41.0 & 21+05.6 (EAST ABUTMENT ONLY)

Note: Dimensions shown thus * for Sta. 10+41.0 only - other dimensions for Sta. 21+05.6



HANDRAIL SU

SCALE: 1 1/2" = 1'-0"

DETAILS OF HANDRAIL AT SHEETING RECESS

SCALE: 1/2" = 1'-0"

BY	DATE	CHARACTER
		REVISIONS
F.B.F.	3-12-40	Location of Pipe Insert detail added.
F.B.F.	3-12-40	Anchor bolt, plate & bearing seat weights revised.
F.B.F.	3-12-40	Truss anchor revised, hand rail revised.
H.W.L.	1-15-40	Handrail added for movable closures.

FILE NAME	USER NAME	DESIGNED	REVISIONS
ct:\p\work\p\dot\halstead\102211668\04	halsteadtw	-	-
	@012_0013\sh\plandgn	DRAWN	REVISIONS
	PLOT SCALE = 50.000000' / in.	CHECKED	REVISIONS
	PLOT DATE = 6/21/2011	DATE	REVISIONS

STATE OF ILLINOIS
DEPARTMENT OF TRANSPORTATION

SCALE: SHEET NO. OF SHEETS STA. TO STA.

OHIO RIVER BASIN
FLOOD PROTECTION GOLCC
MISCELLANEOUS DE

SHEET 29 OF 44 SHEETS SC4
U.S. ENGINEER OFFICE, LOUISVILLE, KY

SUBMITTED: *[Signature]*
APPROVAL RECOMMENDED: *[Signature]* APPROVE
CAPT. CORPS OF ENGINEERS LT. COL. *[Signature]*

DR. BY W.J.S. - R.M.R. TR. BY M.W.B.

F.A.P. RTE.	SECTION	COUNTY	TOTAL SHEETS	SHEET NO.
885	(112,7)-1	POPE	10	9
CONTRACT NO. 78275				
ILLINOIS FED. AID PROJECT				