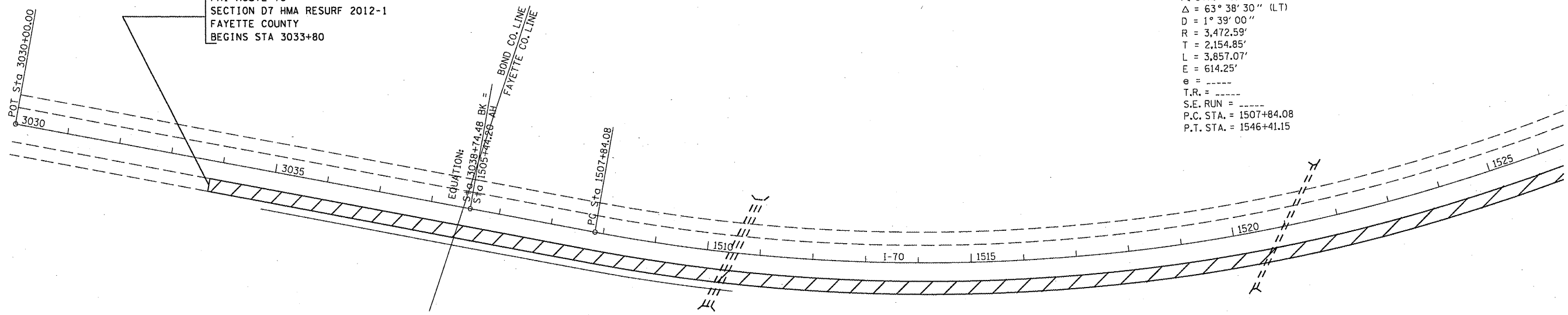




FAI ROUTE 70
SECTION D7 HMA RESURF 2012-1
FAYETTE COUNTY
BEGINS STA 3033+80

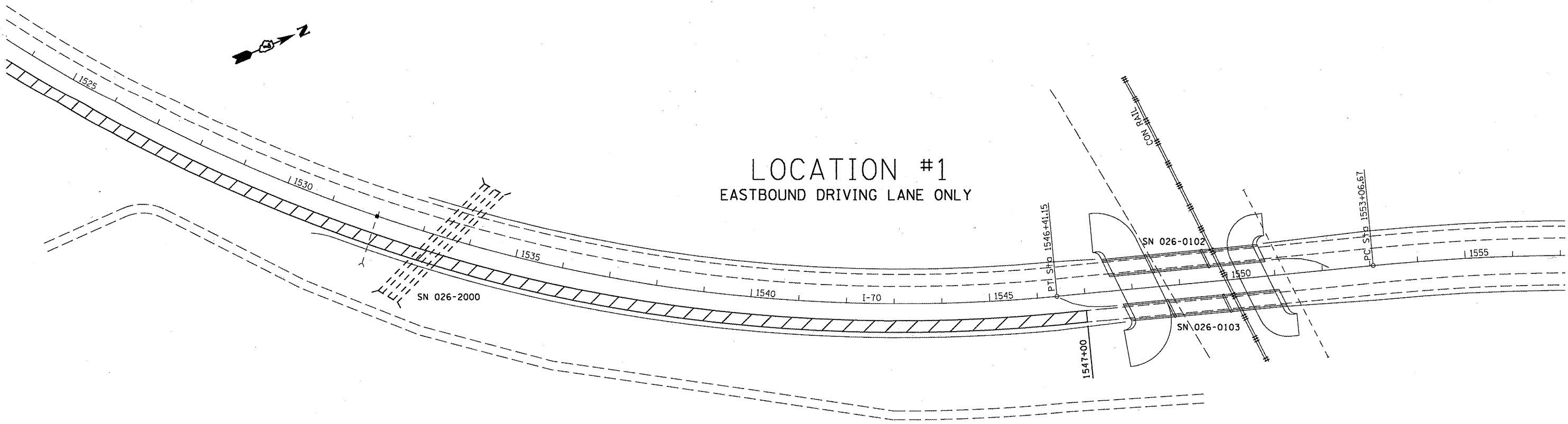


LOCATION #1
EASTBOUND DRIVING LANE ONLY

NOT DRAWN TO SCALE



LOCATION #1
EASTBOUND DRIVING LANE ONLY



NOT DRAWN TO SCALE

FILE NAME = c:\pw_work\pmdot\swartzr\0268526\077	USER NAME = swartzr	DESIGNED -	REVISED -	STATE OF ILLINOIS DEPARTMENT OF TRANSPORTATION	PLAN		F.A.I. RTE.	SECTION	COUNTY	TOTAL SHEETS	SHEET NO.	
	522-shr-plan.dgn	DRAWN -	REVISED -		SCALE: NA	SHEET NO. 1 OF 7 SHEETS	70	D7 HMA RESURF 2012-1	FAYETTE	12	6	
	PLOT SCALE = 200.0000' / in.	CHECKED -	REVISED -		STA. 3033+80	TO STA. 1557+00	CONTRACT NO. 74522					
	PLOT DATE = 5/20/2011	DATE -	REVISED -		ILLINOIS FED. AID PROJECT							