

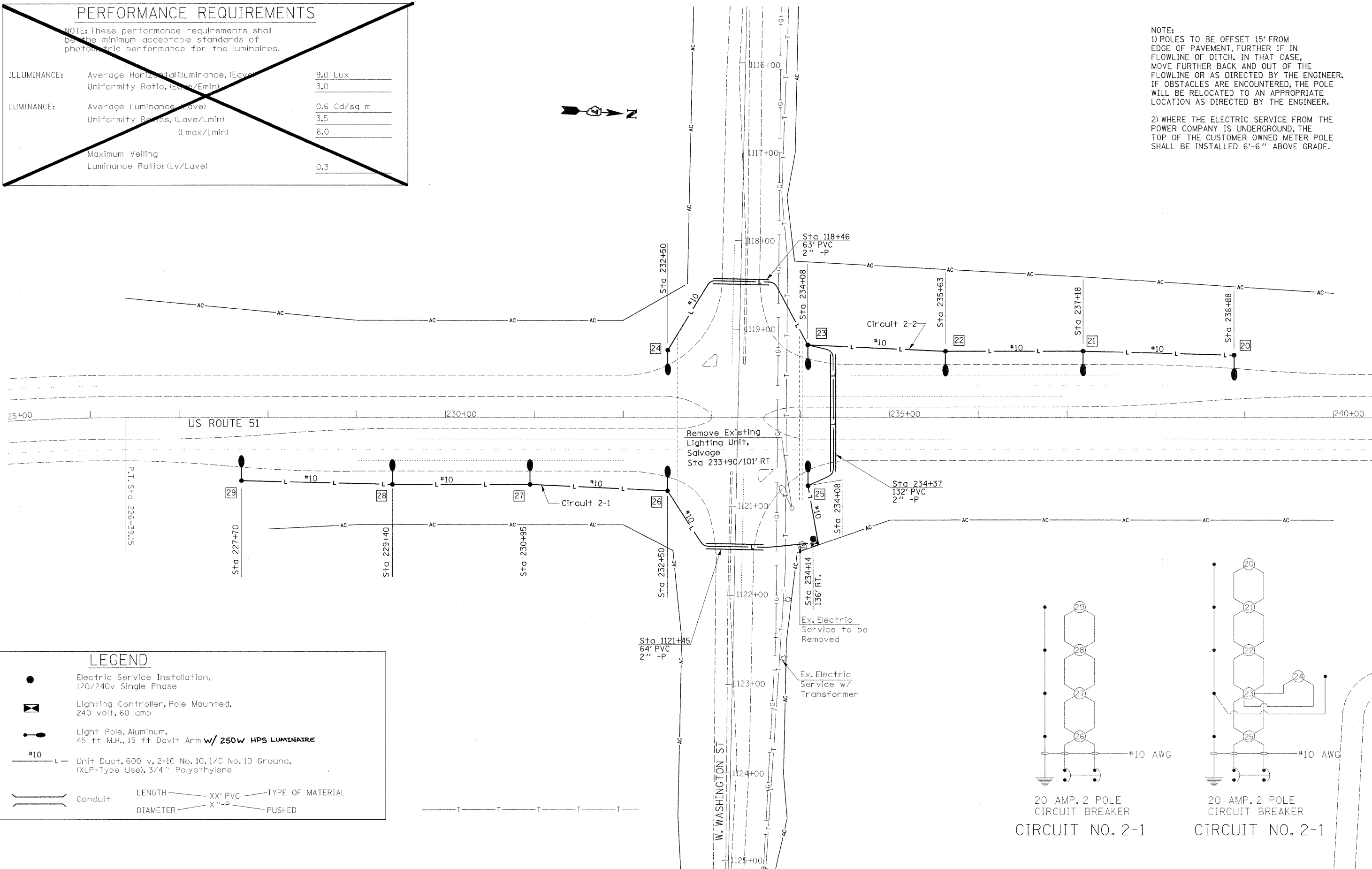
# PERFORMANCE REQUIREMENTS

NOTE: These performance requirements shall be the minimum acceptable standards of photometric performance for the luminaires.

ILLUMINANCE:	Average Horizontal Illuminance, (E <sub>ave</sub> )	9.0 Lux
	Uniformity Ratio, (E <sub>max</sub> /E <sub>min</sub> )	3.0
LUMINANCE:	Average Luminance, (L <sub>ave</sub> )	0.6 Cd/sq m
	Uniformity Ratios, (L <sub>ave</sub> /L <sub>min</sub> )	3.5
	(L <sub>max</sub> /L <sub>min</sub> )	6.0
	Maximum Veiling Luminance Ratio: (L <sub>v</sub> /L <sub>ave</sub> )	0.3

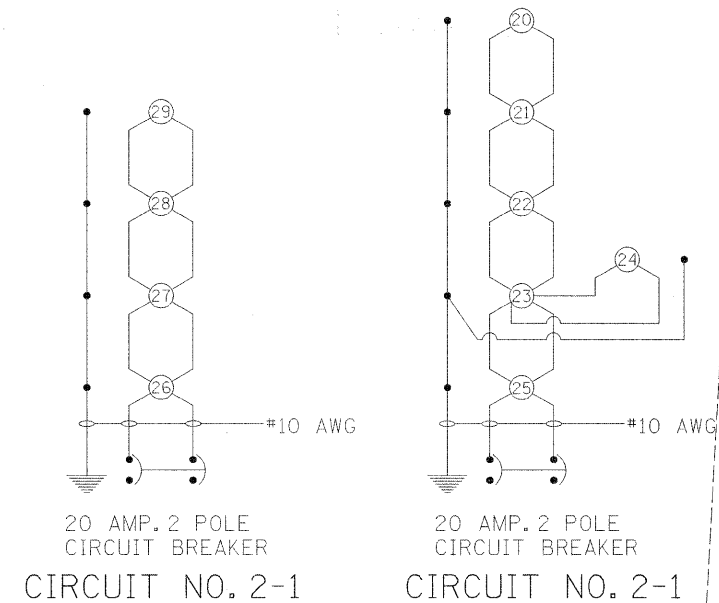
NOTE:  
 1) POLES TO BE OFFSET 15' FROM EDGE OF PAVEMENT, FURTHER IF IN FLOWLINE OF DITCH. IN THAT CASE, MOVE FURTHER BACK AND OUT OF THE FLOWLINE OR AS DIRECTED BY THE ENGINEER. IF OBSTACLES ARE ENCOUNTERED, THE POLE WILL BE RELOCATED TO AN APPROPRIATE LOCATION AS DIRECTED BY THE ENGINEER.

2) WHERE THE ELECTRIC SERVICE FROM THE POWER COMPANY IS UNDERGROUND, THE TOP OF THE CUSTOMER OWNED METER POLE SHALL BE INSTALLED 6'-6" ABOVE GRADE.



### LEGEND

- Electric Service Installation, 120/240v Single Phase
- ☒ Lighting Controller, Pole Mounted, 240 volt, 60 amp
- ⌚ Light Pole, Aluminum, 45 ft M.H., 15 ft Davit Arm w/ 250w HPS LUMINAIRE
- #10 L Unit Duct, 600 v, 2-1C No. 10, 1/C No. 10 Ground, (XLP-Type Use), 3/4" Polyethylene
- Conduit+ LENGTH — XX' PVC — TYPE OF MATERIAL  
DIAMETER — X"-P — PUSHED



FILE NAME =	USER NAME = mcelleania	DESIGNED -	REVISED -
c:\pwork\pwork\mcelleania\dms35866\774344\shl-light.dgn		DRAWN -	REVISED -
		CHECKED -	REVISED -
		DATE -	REVISED -

**STATE OF ILLINOIS  
DEPARTMENT OF TRANSPORTATION**

<b>HIGHWAY LIGHTING LOCATION 2</b>			
SCALE:	SHEET NO. OF	SHEETS	STA. TO STA.

F.A.P. RTE. 322	SECTION (51,52)L-2	COUNTY MACON	TOTAL SHEETS 11	SHEET NO. 7
CONTRACT NO. 74344				
FED. ROAD DIST. NO. 7 ILLINOIS FED. AID PROJECT				