

STATE OF ILLINOIS  
DEPARTMENT OF TRANSPORTATION  
DIVISION OF HIGHWAYS

**PROPOSED  
CONTRACT MAINTENANCE**

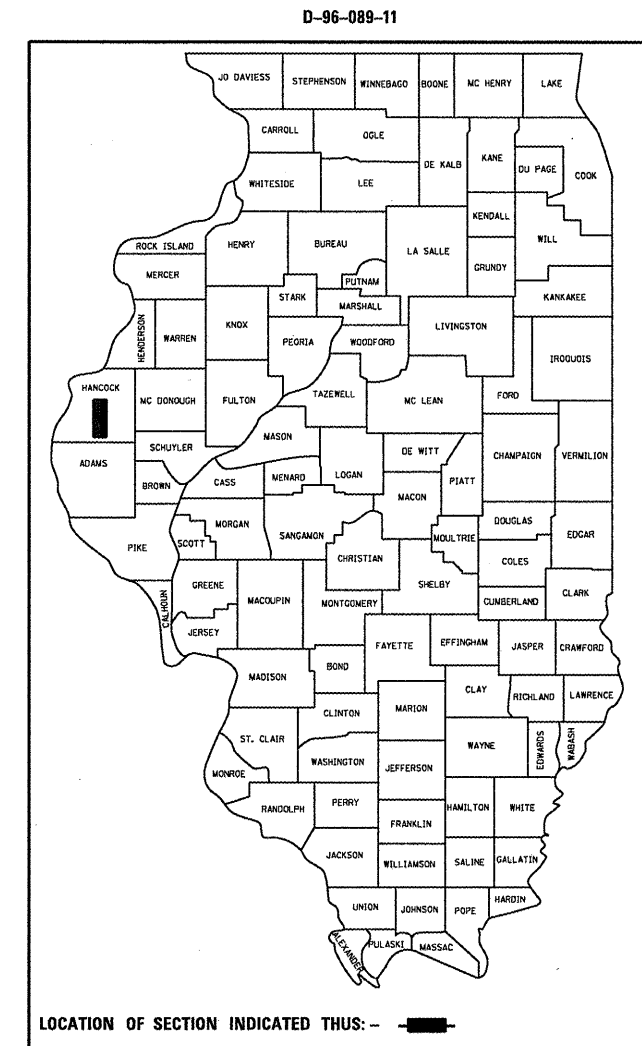
FAP 302 (IL 110 1/2 336)  
SECTION (34-2)I

HANCOCK COUNTY

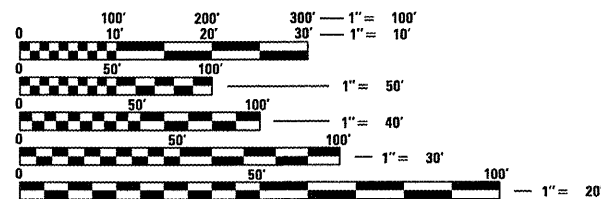
C-96-089-11

F.A.P. RTE.	SECTION	COUNTY	TOTAL SHEETS	SHEET NO.
302	(34-2)I	HANCOCK	6	1
FED. ROAD DIST. NO. _____		ILLINOIS	CONTRACT NO. 72E57	

FOR INDEX OF SHEETS, SEE SHEET NO. 2



ADT = 3200 (500)

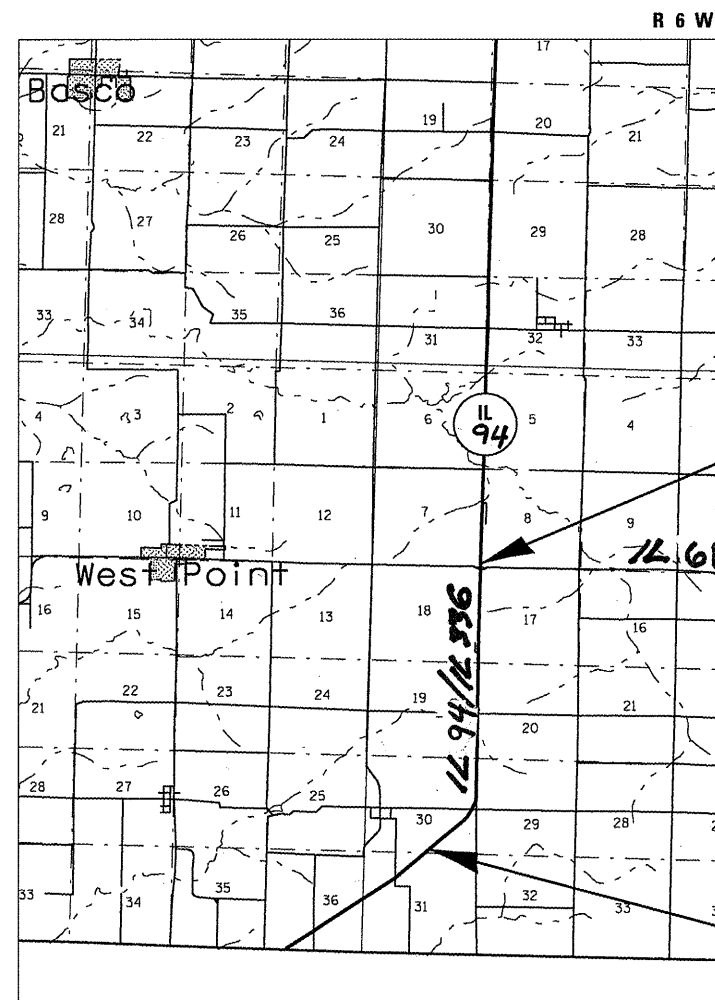


FULL SIZE PLANS HAVE BEEN PREPARED USING STANDARD ENGINEERING SCALES. REDUCED SIZED PLANS WILL NOT CONFORM TO STANDARD SCALES. IN MAKING MEASUREMENTS ON REDUCED PLANS, THE ABOVE SCALES MAY BE USED.

J.U.L.I.E.  
JOINT UTILITY LOCATION INFORMATION FOR EXCAVATION  
1-800-892-0123  
OR 811

PLAN AND CONTRACT TECHNICIAN  
TIMOTHY SHARP (217)782-7743

CONTRACT NO. 72E57



STATE OF ILLINOIS  
DEPARTMENT OF TRANSPORTATION  
DIVISION OF HIGHWAYS

SUBMITTED May 31 20 11  
Ken D. [Signature]  
DEPUTY DIRECTOR OF HIGHWAYS, REGION ENGINEER

July 1 20 11  
Scott E. Stitt P.E.  
Acting ENGINEER OF DESIGN AND ENVIRONMENT

July 1 20 11  
Christine M. [Signature]  
DIRECTOR OF HIGHWAYS, CHIEF ENGINEER

PRINTED BY THE AUTHORITY  
OF THE STATE OF ILLINOIS

INDEX

- 1 COVER
- 2 INDEX/STANDARDS/SIGNATURES
- 3 QUANTITIES
- 4 LOCATION MAP
- 5 TYPICAL SECTIONS
- 6 SCHEDULES

STANDARDS

- 442201-03
- 701001-02
- 701006-03
- 701101-02
- 701106-02
- 701400-05
- 701406-06
- 701426-04
- 701901-01
- 780001-02
- 781001-03

<b>STATE OF ILLINOIS DEPARTMENT OF TRANSPORTATION DIVISION OF HIGHWAYS DISTRICT 6</b>	
EXAMINED <u>MAY 26</u> 20 <u>11</u>	<u><i>Chris Welch</i></u> ENGINEER OF OPERATIONS
EXAMINED <u>MAY 16</u> 20 <u>11</u>	<u><i>Jimmy Ford</i></u> ENGINEER OF PROJECT IMPLEMENTATION
EXAMINED <u>May 20</u> 20 <u>11</u>	<u><i>DRML</i></u> ENGINEER OF PROGRAM DEVELOPMENT

INDEX/STANDARDS/SIGNATURES  
FAP 302 (IL 110)  
SECTION (34-2)I  
HANCOCK COUNTY

S U M M A R Y O F Q U A N T I T I E S

CODE NO.	ITEM	UNIT	100% STATE
			0005
			TOTAL QTY
40600200	BITUMINOUS MATERIALS (PRIME COAT)	TON	8.0
40600300	AGGREGATE (PRIME COAT)	TON	40.00
40600895	CONSTRUCTING TEST STRIP	EACH	1
40603515	POLYMERIZED HOT-MIX ASPHALT SURFACE COURSE, MIX C, N 70	TON	2,230
44000157	HOT-MIX SURFACE REMOVAL, 2"	SQ YD	19,904
67100100	MOBILIZATION	L SUM	1
70100700	TRAFFIC CONTROL AND PROTECTION, STANDARD 701406	L SUM	1
70106800	CHANGEABLE MESSAGE SIGN	CAL MO	1
70300100	SHORT-TERM PAVEMENT MARKING	FOOT	2,992
70300230	TEMPORARY PAVEMENT MARKING - LINE 5"	FOOT	18,668
70301000	WORK ZONE PAVEMENT MARKING REMOVAL	SQ FT	499
78001120	PAINT PAVEMENT MARKING - LINE 5"	FOOT	18,668
78100100	RAISED REFLECTIVE PAVEMENT MARKER	EACH	188
78300200	RAISED REFLECTIVE PAVEMENT MARKER REMOVAL	EACH	188

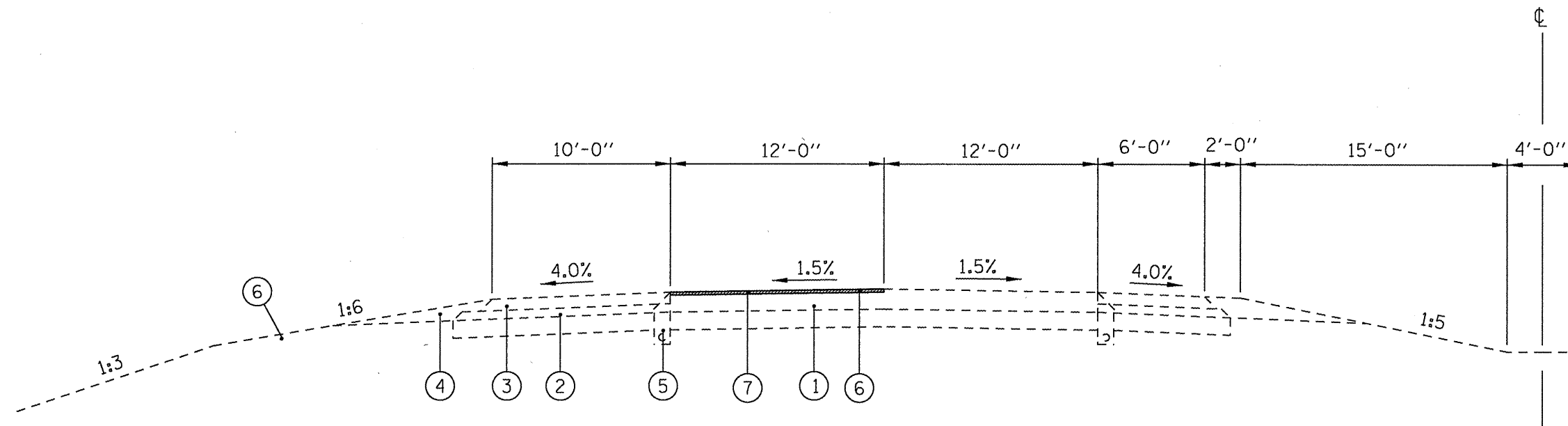
QUANTITIES  
FAP 302 (IL 110)  
SECTION (34-2)I  
HANCOCK COUNTY

END PROJECT  
STA. 66+800



BEGIN PROJECT  
STA. 62+250

PLAN  
FAP 302 (IL 110)  
SECTION (34-2)I  
HANCOCK COUNTY



SOUTH BOUND DRIVING LANE  
STA. 62+250 TO 66+800

LEGEND

- 1- EXIST. HOT-MIX ASPHALT PAVEMENT (FULL-DEPTH), SUPERPAVE, 13"  
INCLUDES HOT-MIX ASPHALT SURFACE COURSE, SUPERPAVE, MIX "C", N50, 2",  
AND HOT-MIX ASPHALT BINDER COURSE, SUPERPAVE, IL-19.0, N50, 11"
- 2- EXIST. SUB-BASE GRANULAR MATERIAL, TYPE C, 6"
- 3- EXIST. HOT-MIX ASPHALT SHOULDERS, 8"
- 4- EXIST. AGGREGATE SHOULDERS, TYPE B
- 5- EXIST. PIPE UNDERDRAINS
- 6- PROP HOT-MIX ASPHALT SURFACE REMOVAL, 2"
- 7- PROP. POLYMERIZED HOT-MIX ASPHALT SURFACE COURSE, TYPE C, N 70

TYPICALS  
FAP 302 (IL 110)  
SECTION (34-2)I  
HANCOCK COUNTY

PAVEMENT MARKING SCHEDULE		
STATION	TYPE	PAINT PVT MK LINE 5"
		WHITE
RT 62+250 TO 66+800	SKIP DASH	3,740 FT
LT 62+250 TO 66+880	EDGE LINE	14,928 FT
TOTALS		18,668 FT

NOTES:

STATIONS ARE APPROXIMATE.

MIXTURE REQUIREMENTS	
THE FOLLOWING MIXTURE REQUIREMENTS ARE APPLICABLE FOR THIS PROJECT	
MIXTURE USE(S):	H.M.A S.C., MIX C, N70
AC/PG	SBS PG 64-28
DESIGN AIR VOIDS:	4.0% @ N DESIGN = 70
MIXTURE COMP:	IL 9.5 OR 12.5
FRICTION AGG:	MIX "C"

SCHEDULES  
FAP 302 (IL 110)  
SECTION (34-2)I  
HANCOCK COUNTY