

STATE OF ILLINOIS
 DEPARTMENT OF TRANSPORTATION
 DIVISION OF HIGHWAYS

**PROPOSED
 HIGHWAY PLANS**

VARIOUS ROUTES
 SECTION D6 CABLE/GUARDRAIL REPAIR 2012

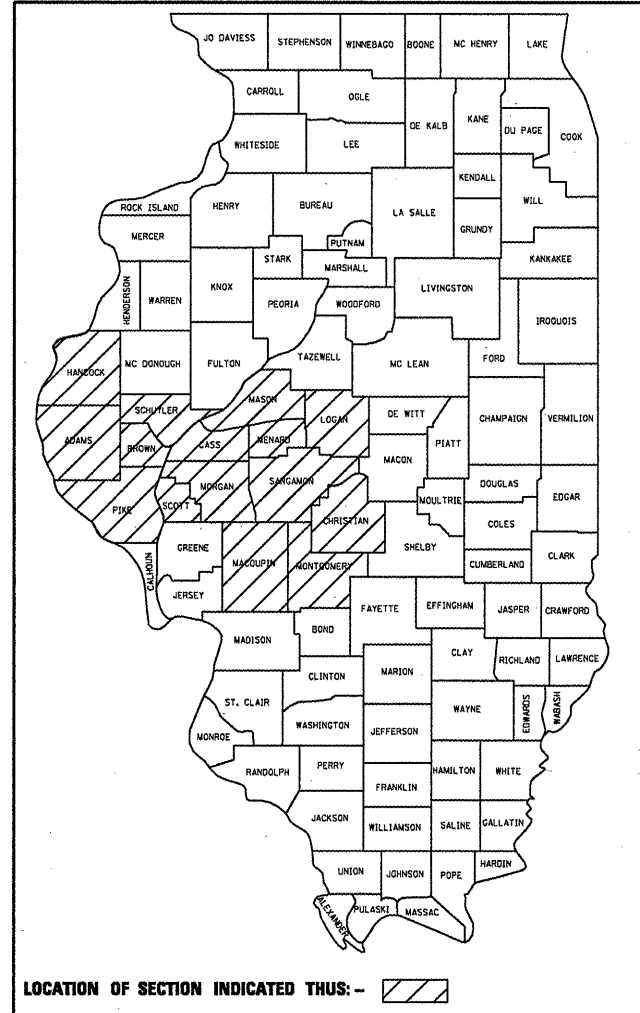
SAFETY ITEM REPAIR
 VARIOUS COUNTIES

C-96-067-11

F.A. RTE.	SECTION	COUNTY	TOTAL SHEETS	SHEET NO.
VAR.	•	VARIOUS	18	1
		ILLINOIS	CONTRACT NO. 72E39	

• D6 CABLE/GUARDRAIL REPAIR 2012

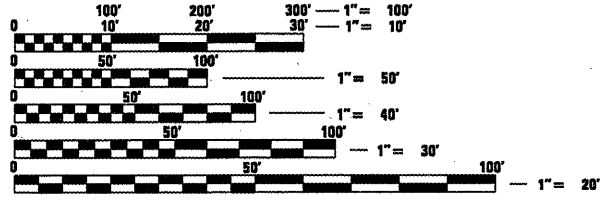
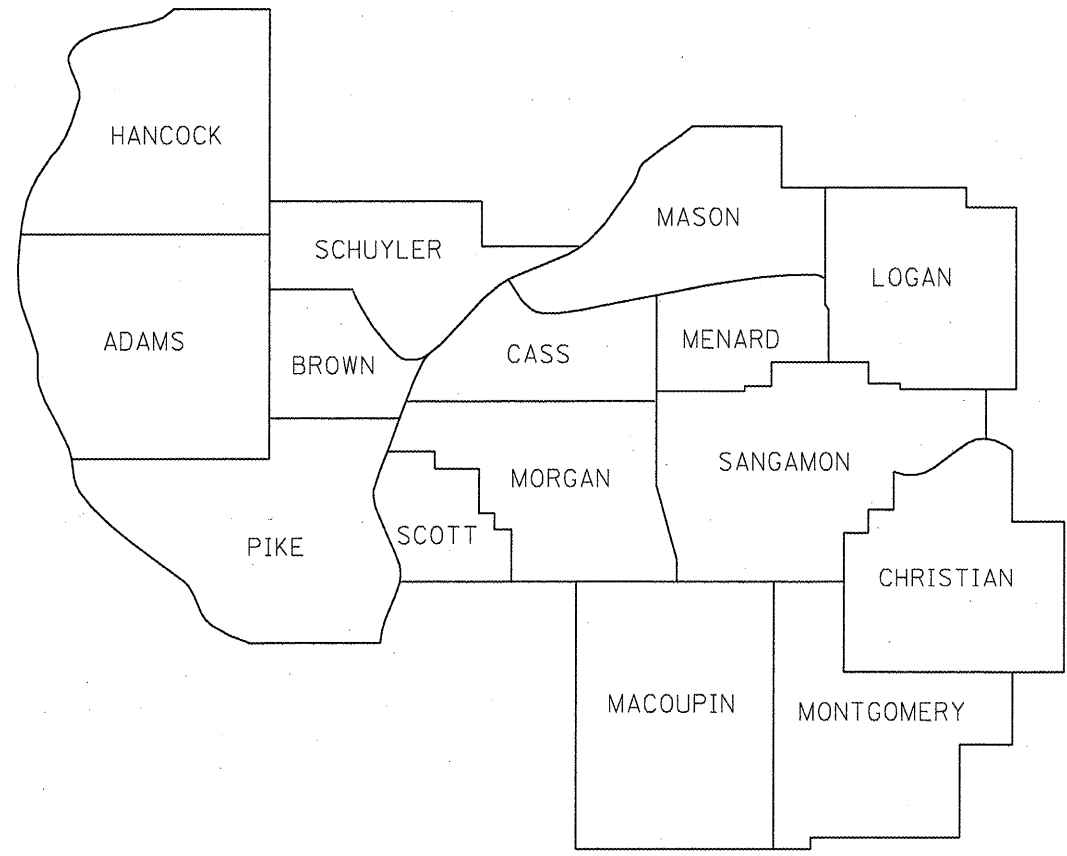
D-96-067-11



INDEX OF SHEETS

- 1 COVERSHEET
- 2 GENERAL NOTES
- 3-6 SUMMARY OF QUANTITIES
- 7-17 PRE-MGS HIGHWAY STANDARDS
- 18 CABLE GUARD MARKER DETAIL

FOR LIST OF STANDARDS, SEE SHEET NO. 2



FULL SIZE PLANS HAVE BEEN PREPARED USING STANDARD ENGINEERING SCALES. REDUCED SIZED PLANS WILL NOT CONFORM TO STANDARD SCALES. IN MAKING MEASUREMENTS ON REDUCED PLANS, THE ABOVE SCALES MAY BE USED.

J.U.L.I.E.
 JOINT UTILITY LOCATION INFORMATION FOR EXCAVATION
 1-800-892-0123
 OR 811

PROJECT ENGINEER JOHN NEGANGARD 217-782-6990
 TEAM ENGINEER JAY EDWARDS 217-785-5321

CONTRACT NO. 72E39

STATE OF ILLINOIS
 DEPARTMENT OF TRANSPORTATION
 DIVISION OF HIGHWAYS

SUBMITTED MARCH 31 20 11
Roger L. Driskell, Jr.
 DEPUTY DIRECTOR OF HIGHWAYS, REGION ENGINEER

May 13 20 11
Scott E. Stett, P.E.
 acting ENGINEER OF DESIGN AND ENVIRONMENT

May 13 20 11
Christine M. Reed, P.E.
 DIRECTOR OF HIGHWAYS, CHIEF ENGINEER

**PRINTED BY THE AUTHORITY
 OF THE STATE OF ILLINOIS**

HIGHWAY STANDARDS

STANDARD NO.

630001-09
630301-05
631011-07
631026-05
631031-09
635006-03
701001-02
701006-03
701101-02
701106-02
701201-04
701301-04
701400-05
701406-06
701411-07
701421-03
701422-03
701426-04
701427
701456-01
701501-06
701502-04
701601-07
701602-05
701606-07
701701-07
701901-01

TITLE

STEEL PLATE BEAM GUARDRAIL
SHOULDER WIDENING FOR TYPE 1 (SPECIAL) GUARDRAIL TERMINALS
TRAFFIC BARRIER TERMINAL, TYPE 2
TRAFFIC BARRIER TERMINAL, TYPE 5
TRAFFIC BARRIER TERMINAL, TYPE 6
REFLECTOR AND TERMINAL MARKER PLACEMENT
OFF-ROAD OPERATIONS, 2L, 2W, MORE THAN 15' (4.5 M) AWAY
OFF-ROAD OPERATIONS, 2L, 2W, 15' (4.5 M) TO 24" (600 MM) FROM PAVEMENT EDGE
OFF-ROAD OPERATIONS, MULTILANE, 15' (4.5 M) TO 24" (600 MM) FROM PAVEMENT EDGE
OFF-ROAD OPERATIONS, MULTILANE, MORE THAN 15' (4.5 M) AWAY
LANE CLOSURE, 2L, 2W, DAY ONLY, FOR SPEEDS > 45 MPH
LANE CLOSURE, 2L, 2W, SHORT TIME OPERATIONS
APPROACH TO LANE CLOSURE, FREEWAY/EXPRESSWAY
LANE CLOSURE, FREEWAY/EXPRESSWAY, DAY OPERATIONS ONLY
LANE CLOSURE, MULTILANE, AT ENTRANCE OR EXIT RAMP, FOR SPEEDS > 45 MPH
LANE CLOSURE, MULTILANE, DAY OPERATIONS ONLY, FOR SPEEDS > 45 MPH TO 55 MPH
LANE CLOSURE, MULTILANE, FOR SPEEDS > 45 MPH TO 55 MPH
LANE CLOSURE, MULTILANE, INTERMITTENT OR MOVING OPERATION, FOR SPEEDS > 45 MPH
LANE CLOSURE, MULTILANE, INTERMITTENT OR MOVING OPERATION, FOR SPEEDS ≤ 40 MPH
PARTIAL EXIT RAMP CLOSURE FREEWAY/EXPRESSWAY
URBAN LANE CLOSURE, 2L, 2W, UNDIVIDED
URBAN LANE CLOSURE, 2L, 2W, WITH BIDIRECTIONAL LEFT TURN LANE
URBAN LANE CLOSURE, MULTILANE, 1W OR 2W WITH NONTRAVERSABLE MEDIAN
URBAN LANE CLOSURE, MULTILANE, 2W WITH BIDIRECTIONAL LEFT TURN LANE
URBAN LANE CLOSURE, MULTILANE, 2W WITH MOUNTABLE MEDIAN
URBAN LANE CLOSURE, MULTILANE INTERSECTION
TRAFFIC CONTROL DEVICES

GENERAL NOTES

ALL DISTURBED AREAS CAUSED BY THE CONTRACTOR'S OPERATIONS SHALL BE GRADED AND SEEDED WITH CLASS 2 ROADSIDE MIXTURE AND FERTILIZED AS STATED IN SECTION 250 OF THE STANDARD SPECIFICATIONS. COST SHALL BE CONSIDERED INCLUDED IN THE UNIT COST OF THE WORK BEING PERFORMED.

REMOVAL OF DAMAGED IMPACT ATTENUATORS SHALL BE INCLUDED IN THE COST OF THE IMPACT ATTENUATOR BEING INSTALLED.

DISTRICT SIX	
EXAMINED	<u>March 27</u> 20 <u>11</u>
	<i>[Signature]</i>
OPERATIONS ENGINEER	

EXAMINED	<u>MARCH 16</u> 20 <u>11</u>
	<i>[Signature]</i>
PROJECT IMPLEMENTATION ENGINEER	

EXAMINED	<u>MARCH 31</u> 20 <u>11</u>
	<i>[Signature]</i>
PROGRAM DEVELOPMENT ENGINEER	

FILE NAME =	USER NAME = baij	DESIGNED -	REVISED -	STATE OF ILLINOIS DEPARTMENT OF TRANSPORTATION	GENERAL NOTES	F.A. RTE.	SECTION	COUNTY	TOTAL SHEETS	SHEET NO.	
at\pwork\pwork\ba\j\d0262291\0672E39	hnt-gennote.dgn	DRAWN -	REVISED -			VAR	*	VAR	18	2	
	PLOT SCALE = 100.0000' / IN.	CHECKED -	REVISED -			SCALE: SHEET NO. OF SHEETS STA. TO STA.		CONTRACT NO. 72E39			
	PLOT DATE = Mar-30-2011 02:43:59PM	DATE -	REVISED -			ILLINOIS FED. AID PROJECT					

SEQ1 SEQ2 SEQ3

CONSTRUCTION CODE

CODE NO.	ITEM	UNIT	TOTAL QUANTITY	REGULAR PROGRAM	MCHD	STATEWIDE HIGH-TENSION CABLE RAIL REPAIR
				07ADC	07MOC	07ADA
				6-00664-0000	6-00664-9999	0-01842-6001
				0021	0021	0021
				100% STATE	100% STATE	100% STATE
X0327278	REPAIR HIGH TENSION CABLE	FOOT	5000.0		500.0	4500.0
X0327307	REPAIR HIGH TENSION BARRIER TERMINAL	EACH	12.0		2.0	10.0
63100045	TRAFFIC BARRIER TERMINAL, TYPE 2	EACH	1.0		1.0	
63100070	TRAFFIC BARRIER TERMINAL, TYPE 5	EACH	1.0		1.0	
63100085	TRAFFIC BARRIER TERMINAL, TYPE 6	EACH	1.0		1.0	
63100167	TRAFFIC BARRIER TERMINAL, TYPE 1 (SPECIAL) TANGENT	EACH	17.0	5.0	12.0	
63100169	TRAFFIC BARRIER TERMINAL, TYPE 1 (SPECIAL) FLARED	EACH	1.0		1.0	
70100420	TRAFFIC CONTROL AND PROTECTION, STANDARD 701411	EACH	3.0	1.0	2.0	
78200410	GUARDRAIL MARKERS, TYPE A	EACH	300.0	150.0	150.0	
78201000	TERMINAL MARKER - DIRECT APPLIED	EACH	40.0	20.0	20.0	

FILE NAME =	USER NAME = Spksgw	DESIGNED -	REVISED -
ct\pwork\pwork\spksgw\d8262291\067	E39-shr-S00.dgn	DRAWN -	REVISED -
	PLOT SCALE = 100.0000 / 1in.	CHECKED -	REVISED -
	PLOT DATE = May-18-2011 10:51:47AM	DATE -	REVISED -

**STATE OF ILLINOIS
DEPARTMENT OF TRANSPORTATION**

SUMMARY OF QUANTITIES			
SCALE:	SHEET NO.	OF SHEETS	STA. TO STA.

F.A. RTE.	SECTION	COUNTY	TOTAL SHEETS	SHEET NO.
VAR		VAR	18	3
			CONTRACT NO. 72E39	
ILLINOIS FED. AID PROJECT				

CODE NO.	ITEM	UNIT	TOTAL QUANTITY	CONSTRUCTION CODE		
				REGULAR PROGRAM	MCHD	STATEWIDE HIGH-TENSION CABLE RAIL REPAIR
				6-00664-0000 0021 100% STATE	6-00664-9999 0021 100% STATE	0-01842-6001 0021 100% STATE
Z0008759	CALL OUT	EACH	40.0	20.0	20.0	
Z0008760	EMERGENCY WORK CALL OUT	EACH	41.0	3.0	10.0	28.0
Z0030020	IMPACT ATTENUATORS (FULLY REDIRECTIVE, NARROW), TEST LEVEL 2	EACH	1.0	1.0		
Z0030030	IMPACT ATTENUATORS (FULLY REDIRECTIVE, NARROW), TEST LEVEL 3	EACH	1.0	1.0		
Z0030040	IMPACT ATTENUATORS (FULLY REDIRECTIVE, WIDE), TEST LEVEL 2	EACH	1.0	1.0		
Z0030050	IMPACT ATTENUATORS (FULLY REDIRECTIVE, WIDE), TEST LEVEL 3	EACH	1.0	1.0		
Z0030080	IMPACT ATTENUATORS (SEVERE USE, WIDE), TEST LEVEL 2	EACH	1.0	1.0		
Z0030090	IMPACT ATTENUATORS (SEVERE USE, WIDE), TEST LEVEL 3	EACH	1.0	1.0		
Z0030120	IMPACT ATTENUATORS (PARTIALLY REDIRECTIVE), TEST LEVEL 2	EACH	1.0		1.0	
Z0030130	IMPACT ATTENUATORS (PARTIALLY REDIRECTIVE), TEST LEVEL 3	EACH	1.0		1.0	

FILE NAME =	USER NAME = Spksgw	DESIGNED -	REVISED -	STATE OF ILLINOIS DEPARTMENT OF TRANSPORTATION	SUMMARY OF QUANTITIES				F.A. RTE.	SECTION	COUNTY	TOTAL SHEETS	SHEET NO.
ct\pwwork\pwwid\spksgw\d0262291\0672E39-shd-S00.dgn	DRAWN -	REVISED -	VAR							VAR	18	4	
PLOT SCALE = 100.0000' / 1in.	CHECKED -	REVISED -	SCALE: SHEET NO. OF SHEETS STA. TO STA.				CONTRACT NO. 72E39						
PLOT DATE = May-18-2011 10:52:57AM	DATE -	REVISED -					ILLINOIS FED. AID PROJECT						

CODE NO.	ITEM	UNIT	TOTAL QUANTITY	CONSTRUCTION CODE		
				REGULAR PROGRAM	MCHD	STATEWIDE HIGH-TENSION CABLE RAIL REPAIR
				6-00664-0000 0021 100% STATE	6-00664-9999 0021 100% STATE	0-01842-6001 0021 100% STATE
Z0030140	IMPACT ATTENUATORS (NON-REDIRECTIVE), TEST LEVEL 2	EACH	1.0		1.0	
Z0030150	IMPACT ATTENUATORS (NON-REDIRECTIVE), TEST LEVEL 3	EACH	4.0	1.0	3.0	
Z0052000	REPAIR STEEL PLATE BEAM GUARDRAIL, TYPE A	FOOT	1000.0	500.0	500.0	
Z0052410	REPAIR TRAFFIC BARRIER TERMINAL, TYPE 1 SPECIAL (TANGENT)	EACH	16.0	6.0	10.0	
Z0052415	REPAIR TRAFFIC BARRIER TERMINAL, TYPE 1 SPECIAL (FLARED)	EACH	1.0		1.0	
Z0052600	REPAIR TRAFFIC BARRIER TERMINAL, TYPE 2	EACH	1.0		1.0	
Z0053000	REPAIR TRAFFIC BARRIER TERMINAL, TYPE 5	EACH	1.0		1.0	
Z0053200	REPAIR TRAFFIC BARRIER TERMINAL, TYPE 6	EACH	1.0		1.0	
X0325231	CABLE GUARD MARKER	EACH	500.0		50.0	450.0
X0326466	HIGH TENSION CABLE POST REPAIR	EACH	1000.0		100.0	900.0

FILE NAME =	USER NAME = Spksgw	DESIGNED -	REVISED -	STATE OF ILLINOIS DEPARTMENT OF TRANSPORTATION	SUMMARY OF QUANTITIES				F.A. RTE.	SECTION	COUNTY	TOTAL SHEETS	SHEET NO.
ea\pwwork\pwwork\spksgw\d0262291\067239-sht-500.dgn	DRAWN -	REVISED -	VAR							VAR	18	5	
PLOT SCALE = 100.0000' / 1in.	CHECKED -	REVISED -	SCALE: SHEET NO. OF SHEETS STA. TO STA.				ILLINOIS FED. AID PROJECT						
PLOT DATE = May-18-2011 10:54:35AM	DATE -	REVISED -					CONTRACT NO. 72E39						

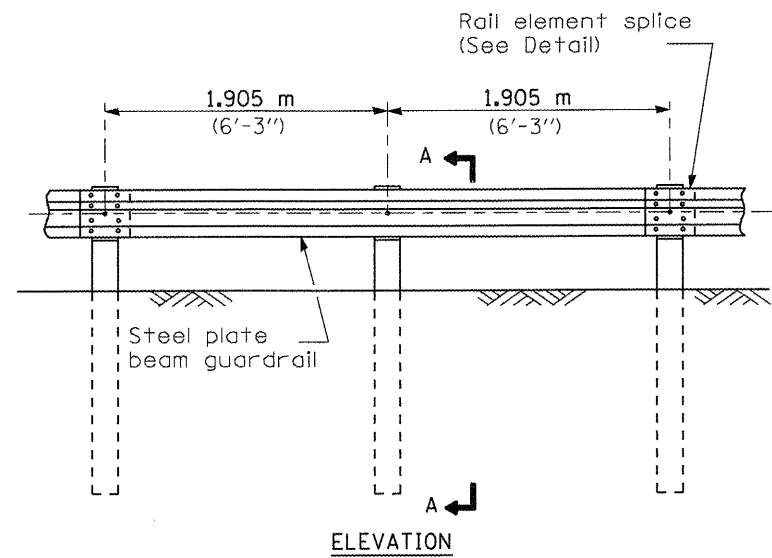
CODE NO.	ITEM	UNIT	TOTAL QUANTITY	CONSTRUCTION CODE		
				REGULAR PROGRAM	MCHD	STATEWIDE HIGH-TENSION CABLE RAIL REPAIR
				6-00664-0000 0021 100% STATE	6-00664-9999 0021 100% STATE	0-01842-6001 0021 100% STATE
X7011834	TRAFFIC CONTROL AND PROTECTION, CALL OUT WORK	EACH	17.0	3.0	14.0	
X7011836	TRAFFIC CONTROL AND PROTECTION, FREEWAY/EXPRESSWAY, CALL OUT WORK	EACH	41.0	3.0	10.0	28.0

FILE NAME =	USER NAME = Sparksgw	DESIGNED -	REVISED -
et\p\work\p\ridot\sparksgw\0262291\0672E39.sht-500.dgn		DRAWN -	REVISED -
PLOT SCALE = 100.0000' / 1in.		CHECKED -	REVISED -
PLOT DATE = May-18-2011 10:53:37AM		DATE -	REVISED -

**STATE OF ILLINOIS
DEPARTMENT OF TRANSPORTATION**

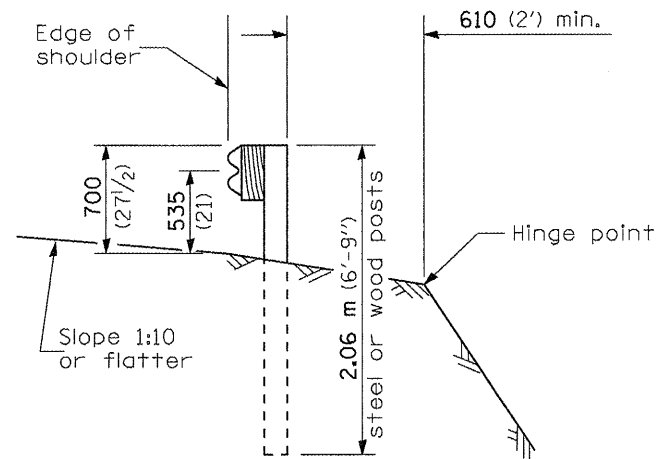
SUMMARY OF QUANTITIES

SCALE:	SHEET NO.	OF	SHEETS	STA.	TO STA.	F.A. RTE.	SECTION	COUNTY	TOTAL SHEETS	SHEET NO.
						VAR		VAR	18	6
						ILLINOIS FED. AID PROJECT				
						CONTRACT NO. 72E39				

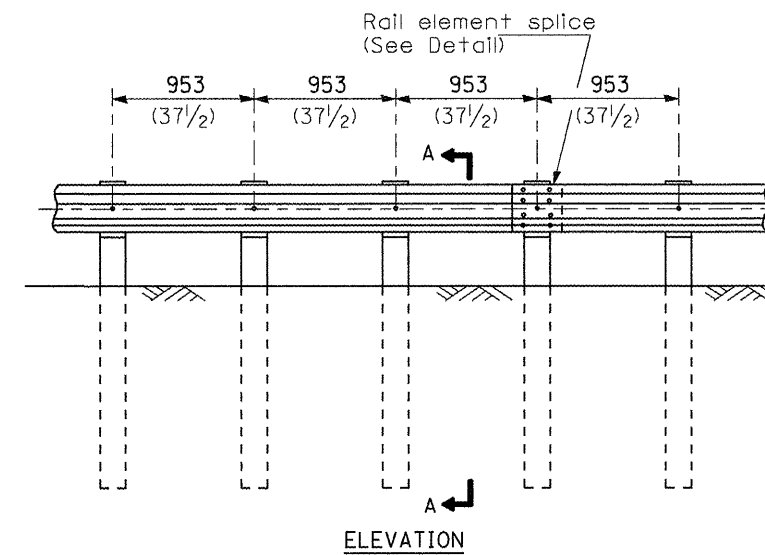


TYPE A

1.905 m (6'-3") Typical post spacing

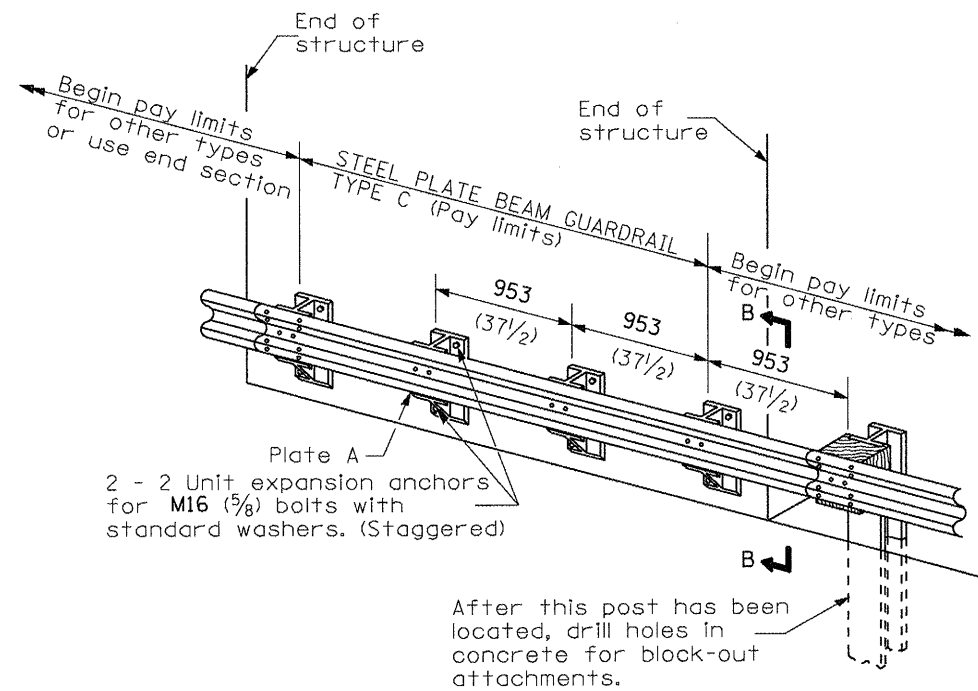


SECTION A-A



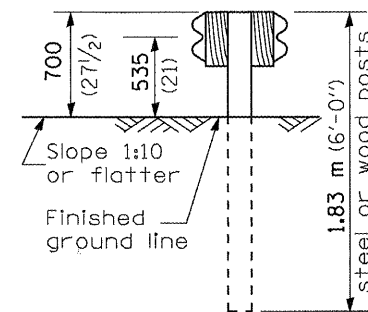
TYPE B

953 (37 1/2) Closed post spacing

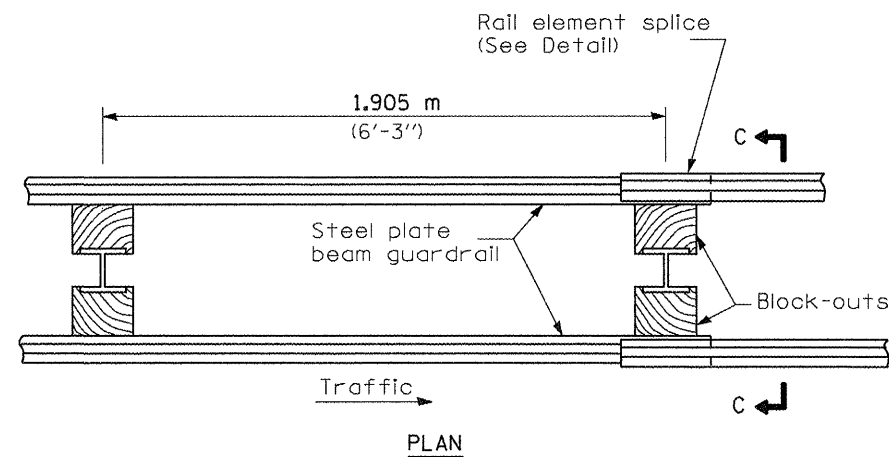


TYPE C

953 (37 1/2) Block-out spacing

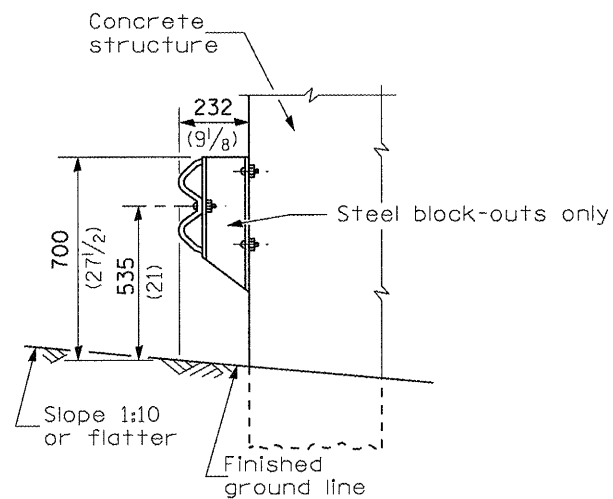


SECTION C-C



TYPE D

Double steel plate beam guardrail
1.905 m (6'-3") typical post spacing



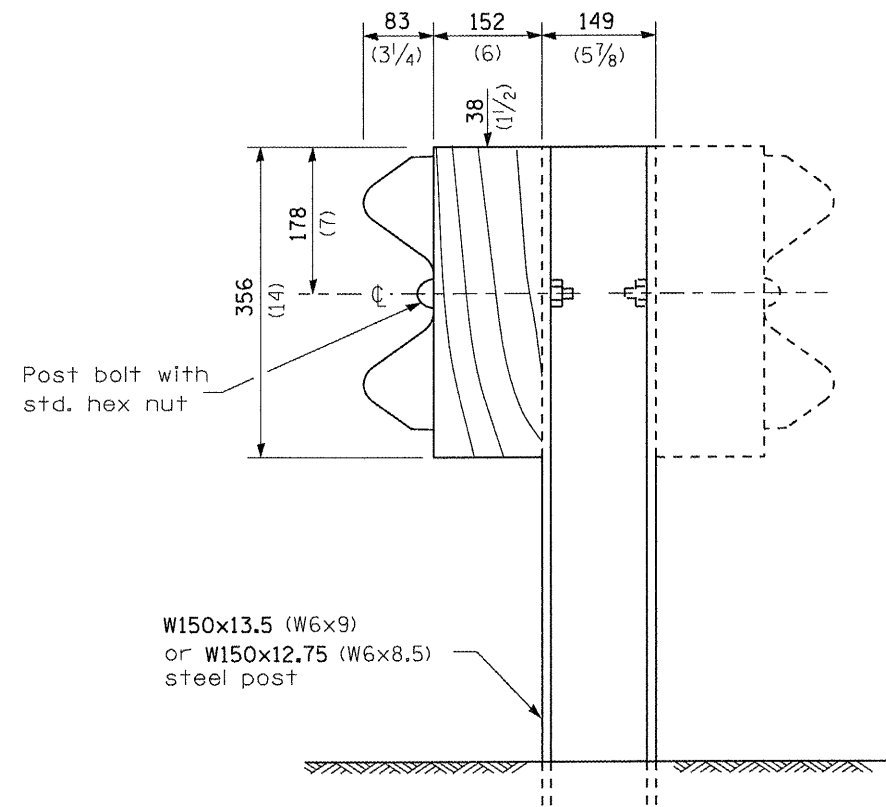
SECTION B-B

GENERAL NOTES

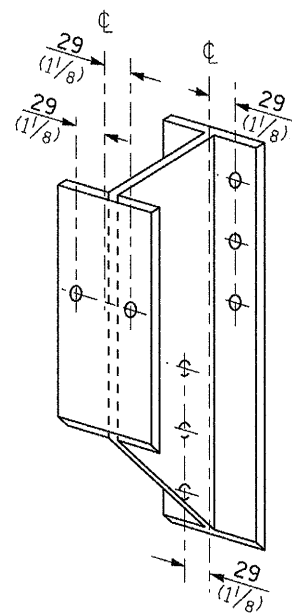
All slope ratios are expressed as units of vertical displacement to units of horizontal displacement (V:H).

All dimensions are in millimeters (inches) unless otherwise shown.

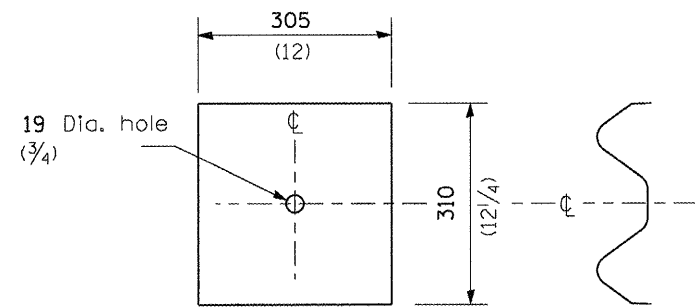
FILE NAME =	USER NAME = Sparksgw	DESIGNED -	REVISED -	STATE OF ILLINOIS DEPARTMENT OF TRANSPORTATION	PRE-MGS HIGHWAY STANDARD 630001-06 STEEL PLATE BEAM GUARDRAIL EFFECTIVE 4-1-06	F.A. RTE.	SECTION	COUNTY	TOTAL SHEETS	SHEET NO.	
cd:\pv_work\pvidot\sparksgw\d0262291\0672E39-shr-207-630001-06_SteelPlateBeamGrndrail	PLDT SCALE = 0:26.000 ms / in.	DRAWN -	REVISED -			VAR		VAR	18	7	
	PLDT DATE = Apr-01-2011 09:43:52AM	CHECKED -	REVISED -			SCALE:	SHEET NO.	OF SHEETS	STA.	TO STA.	CONTRACT NO. 72E39
		DATE -	REVISED -								ILLINOIS FED. AID PROJECT



STEEL POST CONSTRUCTION



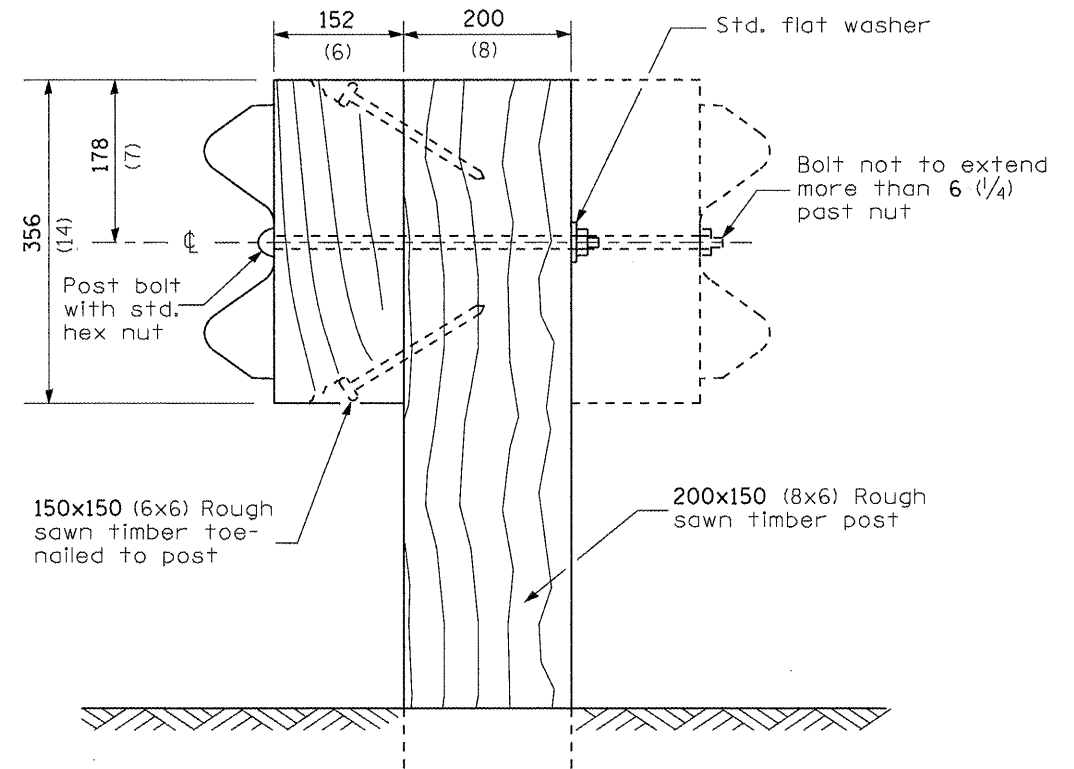
STEEL BLOCK-OUT DETAIL



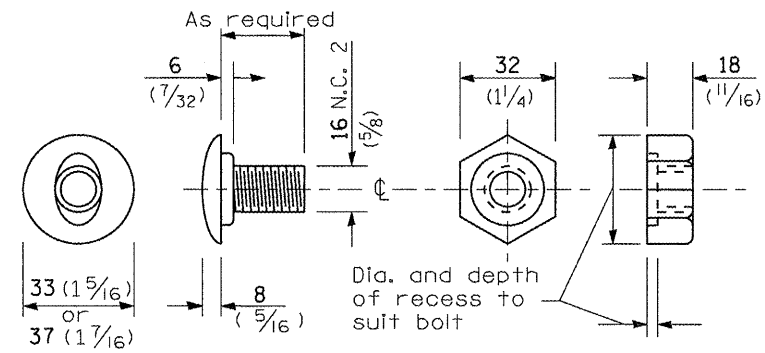
NOTE

Plate A shall be placed between rail element and block-out at non-splice mounting points only when steel block-outs are used.

PLATE A



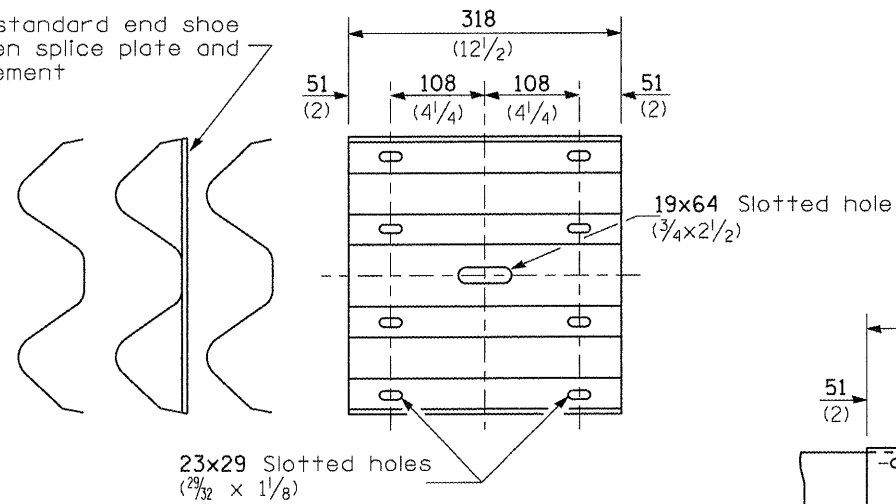
WOOD POST CONSTRUCTION



POST OR SPLICE BOLT & NUT

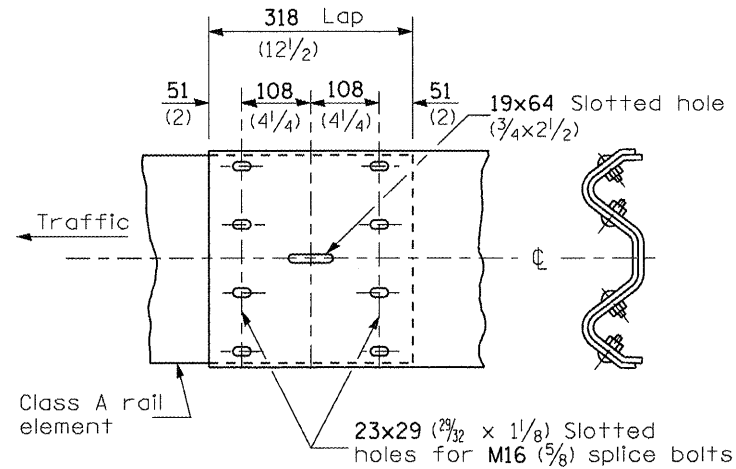
FILE NAME :	USER NAME : Sparksgw	DESIGNED -	REVISED -	STATE OF ILLINOIS DEPARTMENT OF TRANSPORTATION	PRE-MGS HIGHWAY STANDARD 630001-06 STEEL PLATE BEAM GUARDRAIL EFFECTIVE 4-1-06 (SHEET 2 OF 4)	F.A. RTE.	SECTION	COUNTY	TOTAL SHEETS	SHEET NO.
c:\pv_work\pwidot\sparksgw\d026229\067239-shs-207-630001-06-SteelPlateBeamGuardrail.dwg	DRAWN -	REVISED -	VAR				VAR	18	8	
PLOT SCALE = 0:26.000 ms / in.	CHECKED -	REVISED -	CONTRACT NO. 72E39							
PLOT DATE = Apr-01-2011 09:43:52AM	DATE -	REVISED -	ILLINOIS FED. AID PROJECT							
					SCALE:	SHEET NO.	OF	SHEETS	STA.	TO STA.

Place standard end shoe between splice plate and rail element



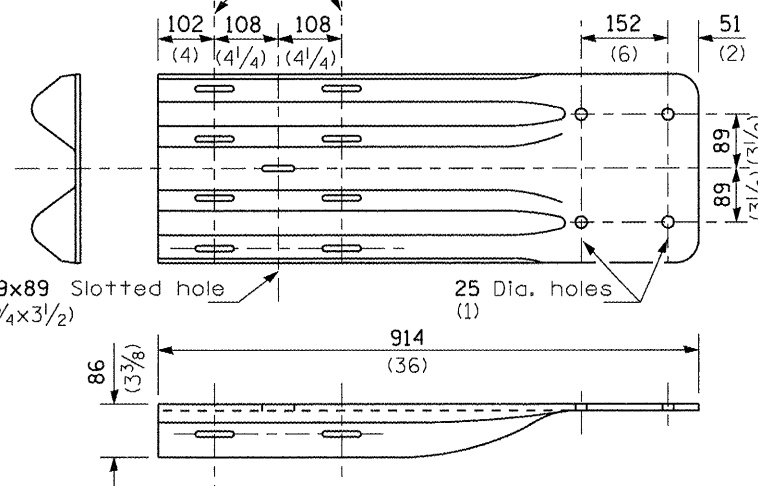
23x29 Slotted holes
($\frac{29}{32} \times 1\frac{1}{8}$)

SPLICE PLATE



RAIL ELEMENT SPLICE

23x76 ($\frac{23}{32} \times 3$) Slots for splice bolts with std. galv. washer placed under locknut



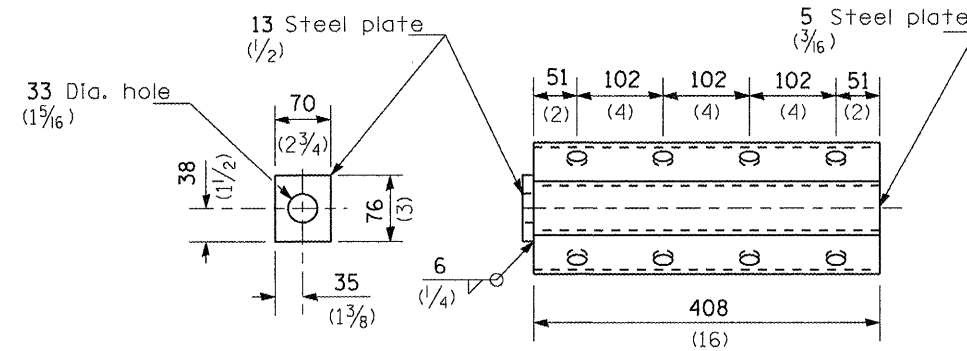
NOTE

When end shoe is attached to a bridge parapet which has an expansion joint, the bolts shall be provided with a locknut or double nut and shall be tightened only to a point that will allow guardrail movement.

The standard end shoe shall be attached to the concrete with pre-drilled or self-drilling anchor bolts. The anchor cone shall be set flush with the surface of the concrete.

Externally threaded studs protruding from the surface of the concrete will not be permitted.

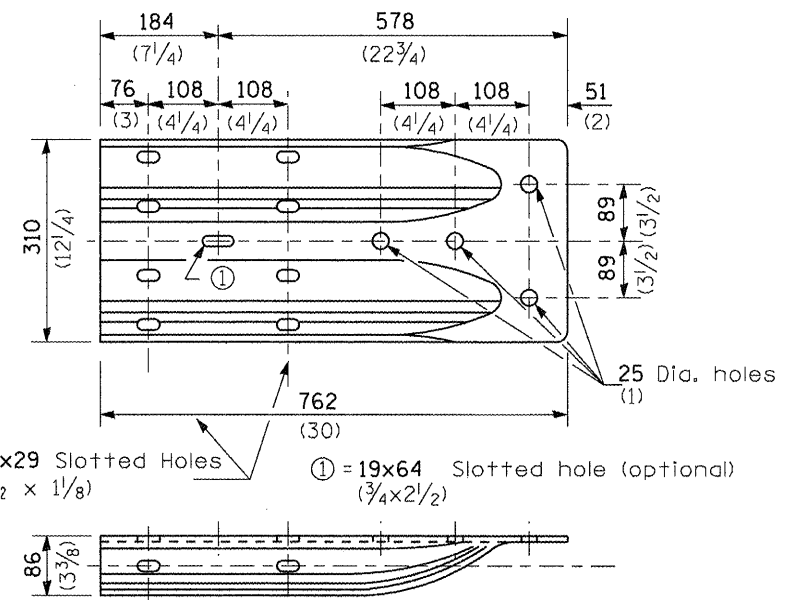
END SHOE



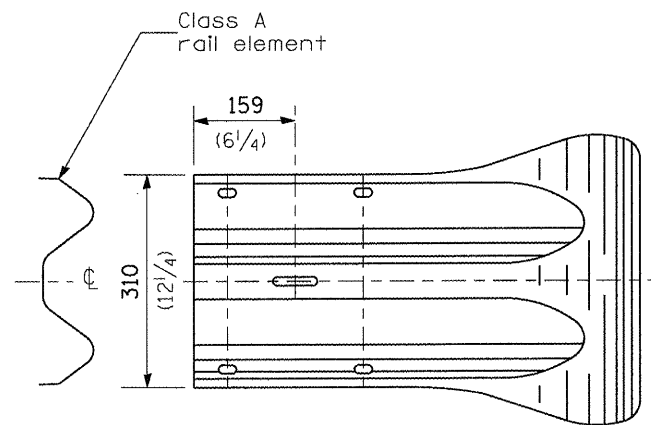
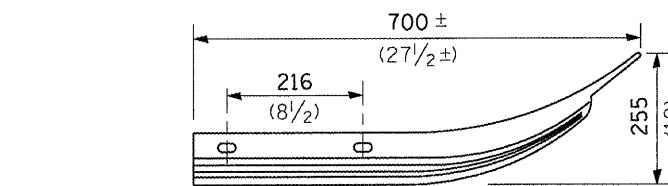
NOTE

Anchor plate T shall be used to attach cable assembly to guardrail when required on traffic barrier terminals.

ANCHOR PLATE T DETAILS

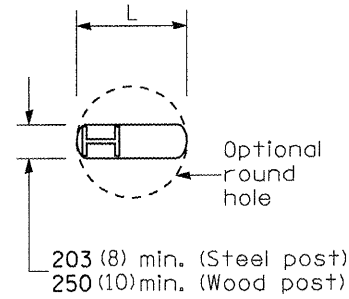


ALTERNATE END SHOE

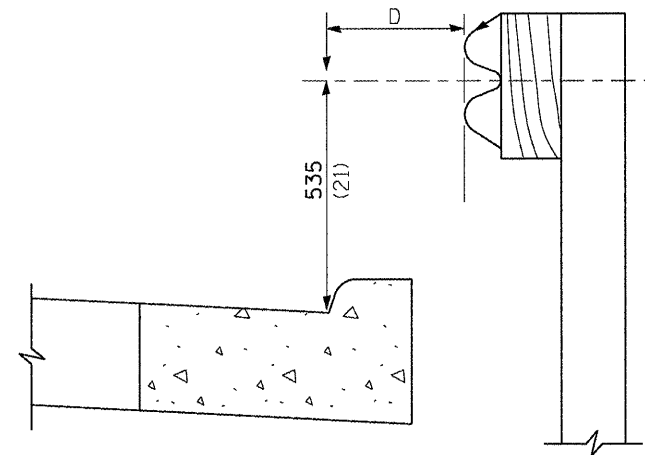


END SECTION

FILE NAME =	USER NAME = Sparksgr	DESIGNED -	REVISED -	STATE OF ILLINOIS DEPARTMENT OF TRANSPORTATION	PRE-MGS HIGHWAY STANDARD 630001-06 STEEL PLATE BEAM GUARDRAIL EFFECTIVE 4-1-06	F.A. RTE.	SECTION	COUNTY	TOTAL SHEETS	SHEET NO.
c:\pwork\pwork\sparksgr\d0262291\067239-shs-207-630001-06_SteelPlateBeamGuardrail	DRAWN -	REVISED -	VAR				VAR	18	9	
PLDT SCALE = 0:26.000 ms / in.	CHECKED -	REVISED -	CONTRACT NO. 72E39							
PLDT DATE = Apr-01-2011 09:43:53AM	DATE -	REVISED -	ILLINOIS FED. AID PROJECT							
					SCALE:	SHEET NO.	OF SHEETS	STA.	TO STA.	(SHEET 3 OF 4)



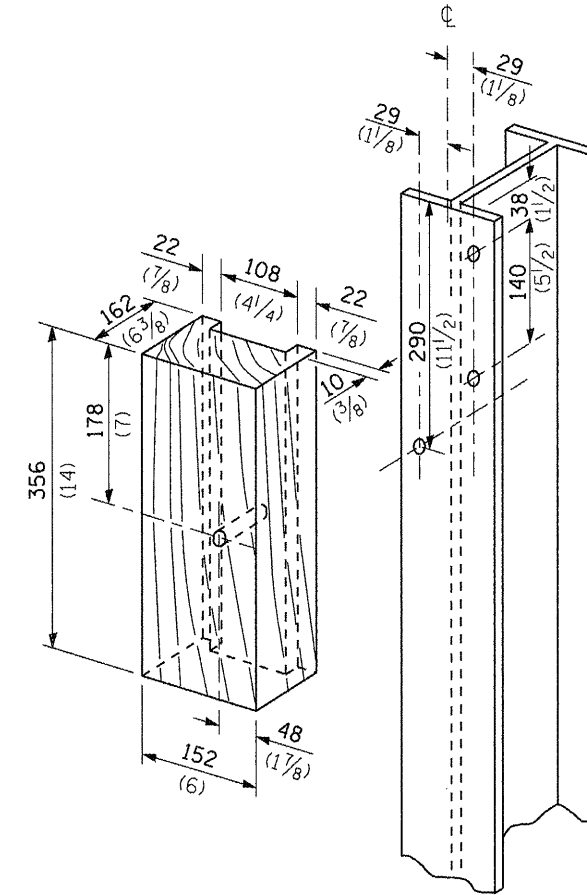
PLAN



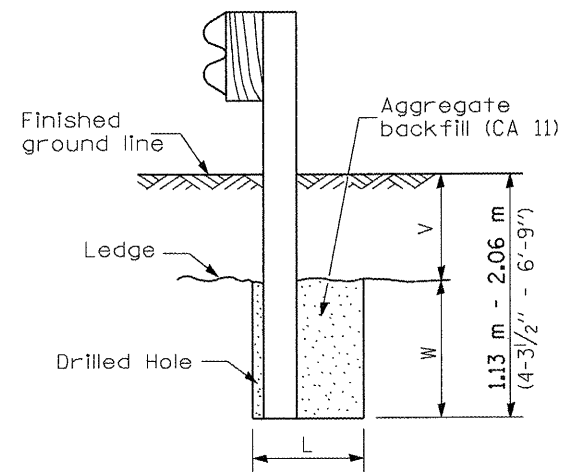
Note:
If it is necessary for D to be more than 300 (12) and less than 3.0 m (10'-0") type M-5 (M-2) curb and gutter (Std. 606001) shall be used in front of and in advance of the guardrail.

GUARDRAIL PLACED BEHIND CURB

(D = 0 desirable to 300 (12) maximum)



WOOD BLOCK-OUT AND STEEL POST DETAILS

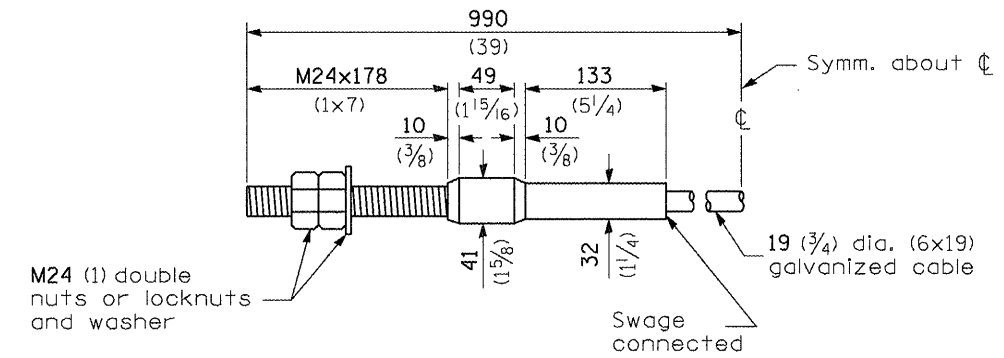


Note:
Ledge line is top of rock ledge or hard slag fill.

ELEVATION

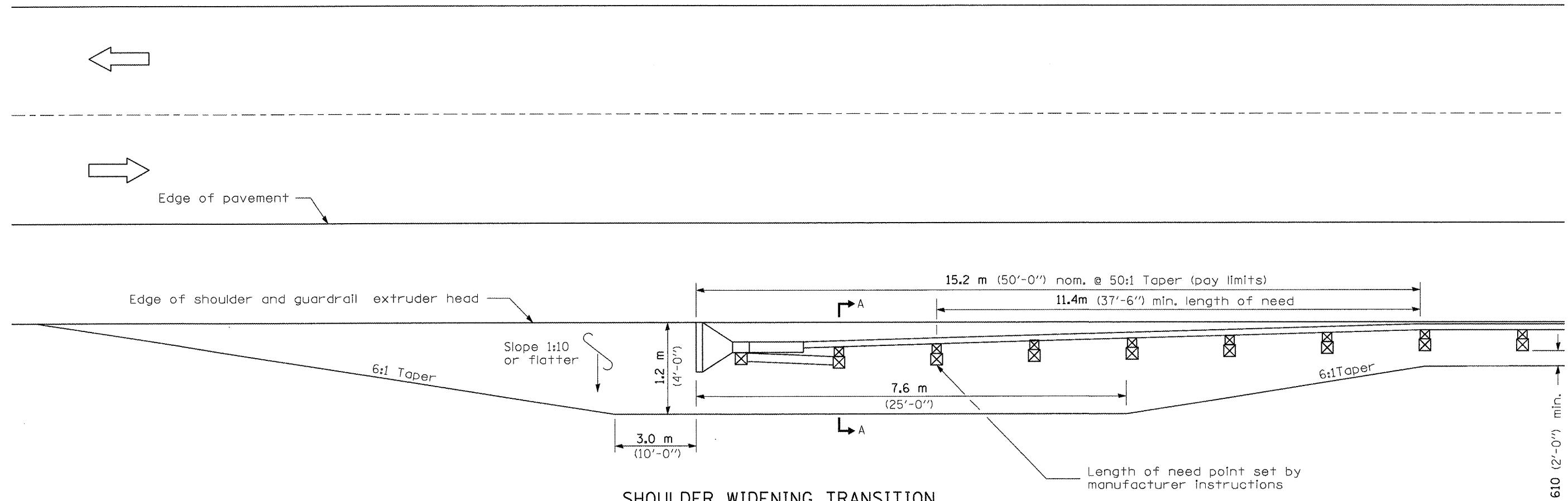
FOOTING FOR POST WHEN IMPERVIOUS MATERIAL IS ENCOUNTERED

V	W	L	
		Steel Post	Wood Post
0 - 460 (0 - 18)	610 (24)	530 (21)	580 (23)
>460 - 825 (>18 - 41.5)	305 (12)	203 (8)	250 (10)
>825 - 1.13 m (>41.5 - 53.5)	305 - 0 (12 - 0)	203 (8)	250 (10)

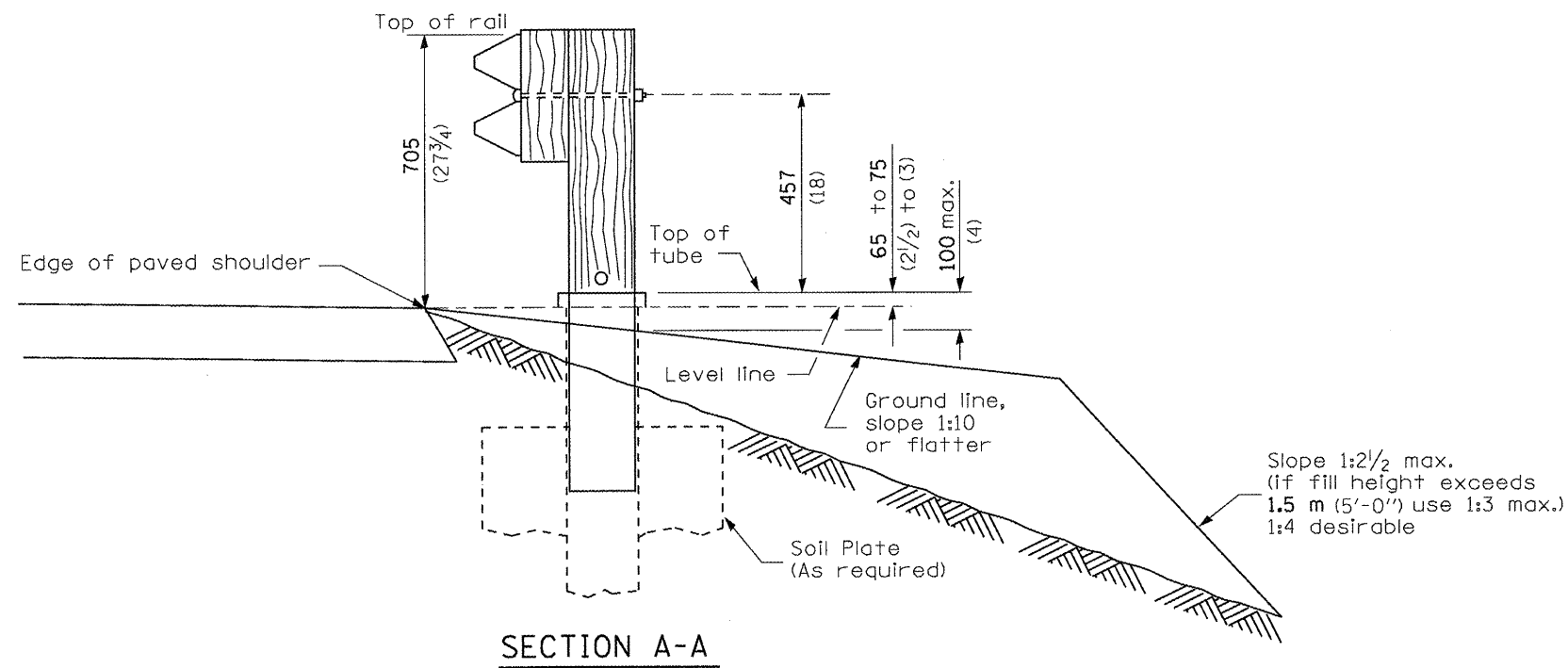


CABLE ASSEMBLY

(18,100 kg (40,000 lbs.) min. breaking strength)
Tighten to taut tension.



**SHOULDER WIDENING TRANSITION
FOR TANGENT TERMINAL**



SECTION A-A

GENERAL NOTES

50:1 Taper required so the guardrail head will not encroach on the shoulder.

All slope ratios are expressed as units of vertical displacement to units of horizontal displacement (V:H).

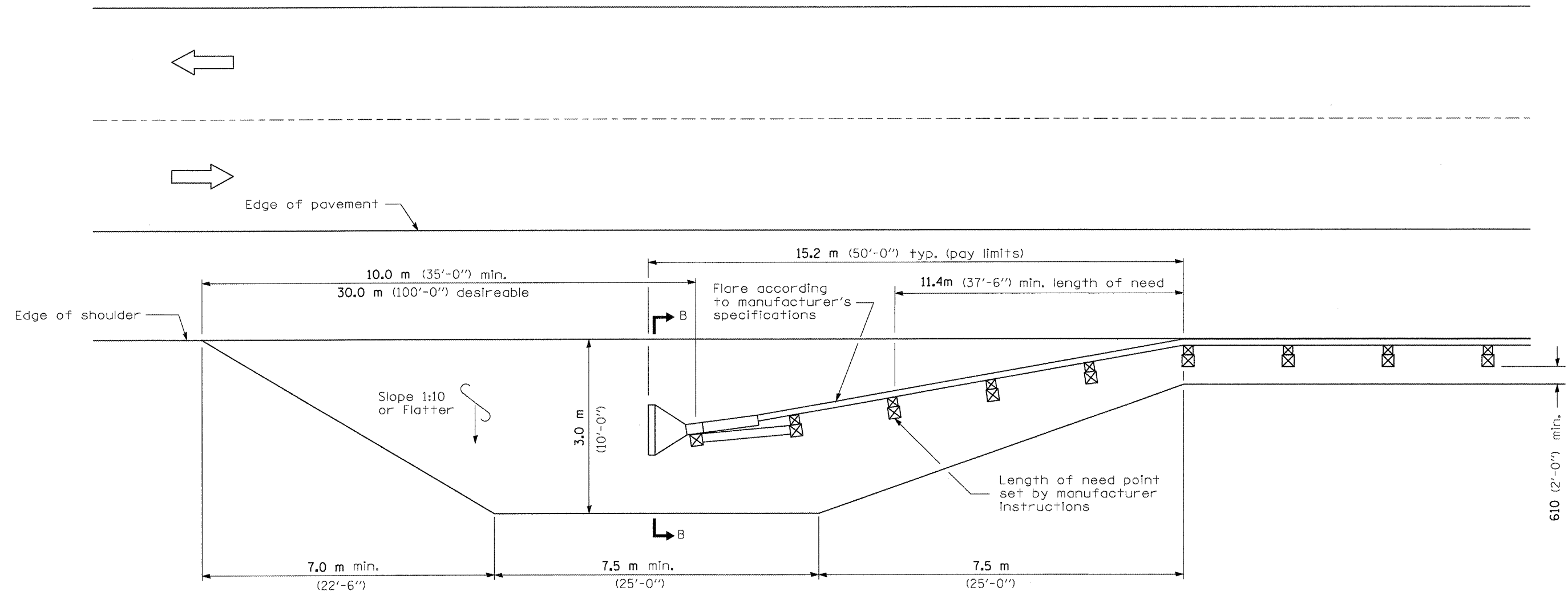
All dimensions are in millimeters (inches) unless otherwise shown.

FILE NAME =	USER NAME = Sparksq	DESIGNED -	REVISED -
c:\pwork\pwidot\sparksq\d0262291\067	E39-aht-207-630301-03_ShldWidenForType1Grdr	DRAWN -	REVISED -
	PLDT SCALE = 0:26.000 ms / in.	CHECKED -	REVISED -
	PLDT DATE = Apr-01-2011 09:43:58AM	DATE -	REVISED -

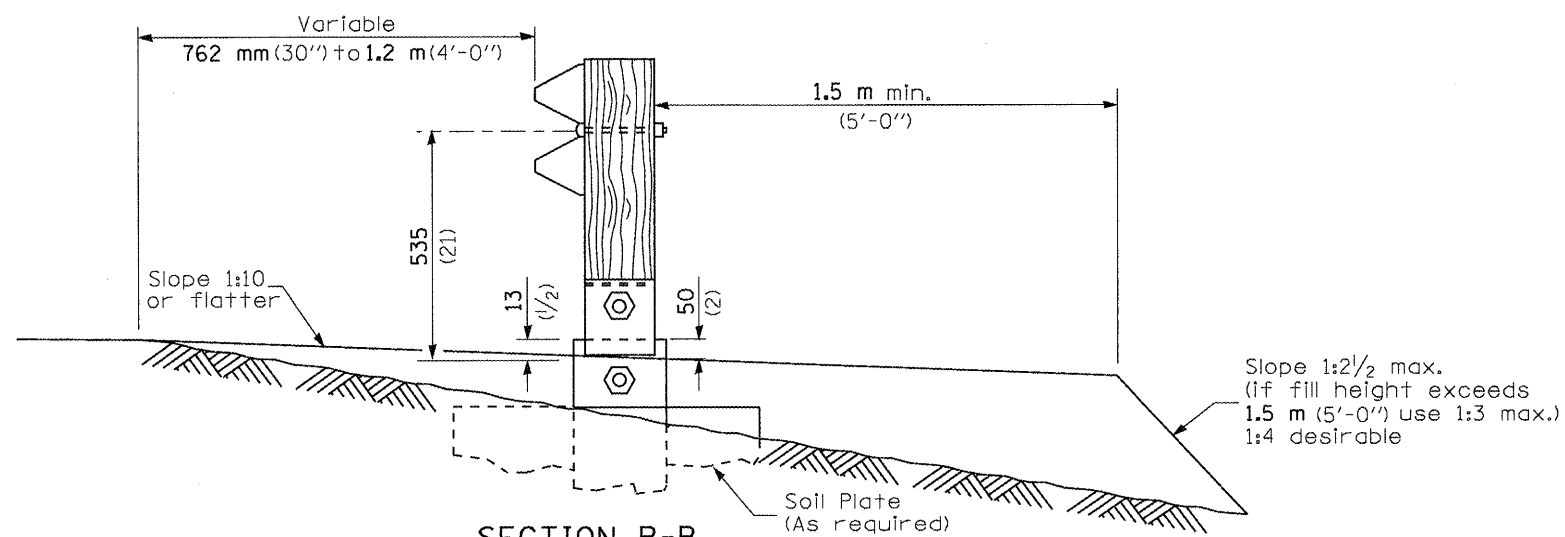
**STATE OF ILLINOIS
DEPARTMENT OF TRANSPORTATION**

PRE-MGS HIGHWAY STANDARD 630301-03			
SHOULDER WID. FOR TYPE 1 (SPL) GUARDRAIL TERMINAL			
EFFECTIVE 4-1-06			
SCALE:	SHEET NO.	OF SHEETS	STA. TO STA.
			(SHEET 1 OF 2)

F.A. RTE.	SECTION	COUNTY	TOTAL SHEETS	SHEET NO.
VAR		VAR	18	11
CONTRACT NO. 72E39			ILLINOIS FED. AID PROJECT	

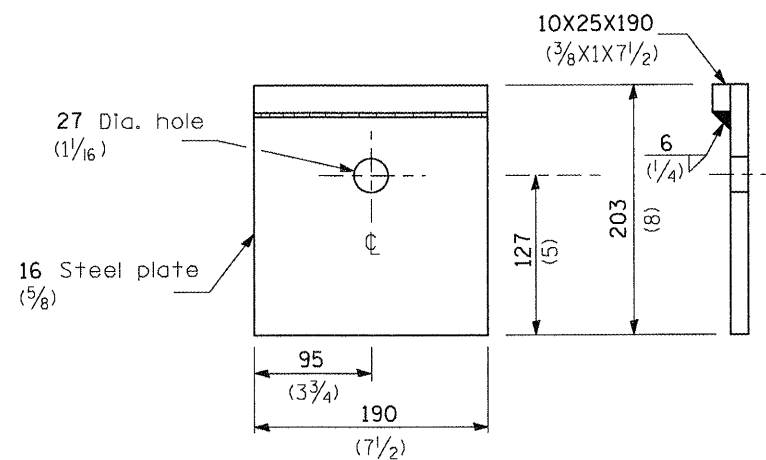


**SHOULDER WIDENING TRANSITION
FOR FLARED TERMINAL**

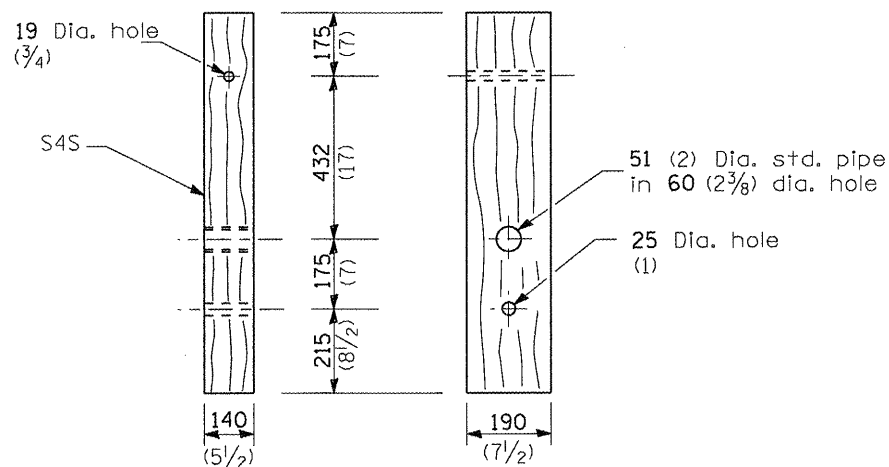


SECTION B-B
(End section omitted for clarity.)

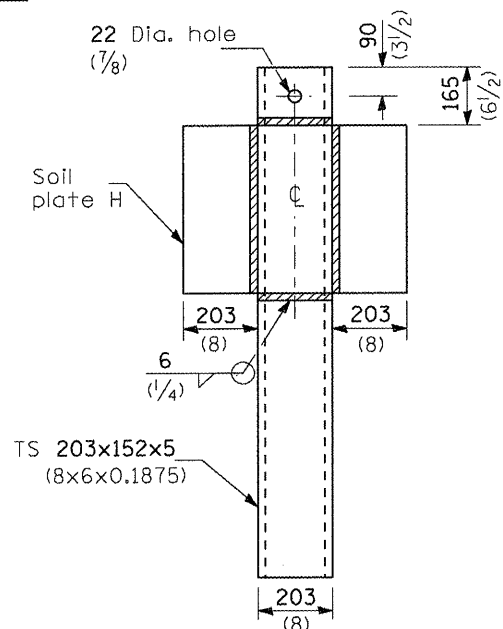
FILE NAME = c:\pw_work\pwidot\sparksg\d0262291\067E39-sht-207-630301-03_ShldWidenForType1Grd	USER NAME = Sparksg	DESIGNED -	REVISED -	STATE OF ILLINOIS DEPARTMENT OF TRANSPORTATION	PRE-MGS HIGHWAY STANDARD 630301-03 SHOULDER WID. FOR TYPE 1 (SPL) GUARDRAIL TERMINAL EFFECTIVE 4-1-06			F.A. RTE.	SECTION	COUNTY	TOTAL SHEETS	SHEET NO.
	DRAWN -	REVISED -	SCALE:					SHEET NO.	OF SHEETS	STA.	TO STA.	VAR
PLLOT SCALE = 0:26.000 m / in.	CHECKED -	REVISED -	REVISED -	(SHEET 2 OF 2)			CONTRACT NO. 72E39 ILLINOIS FED. AID PROJECT					
PLLOT DATE = Apr-01-2011 09:43:58AM	DATE -	REVISED -	REVISED -									



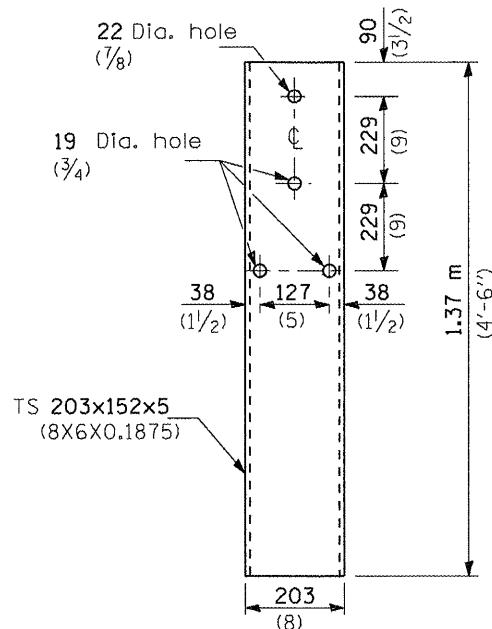
BEARING PLATE K



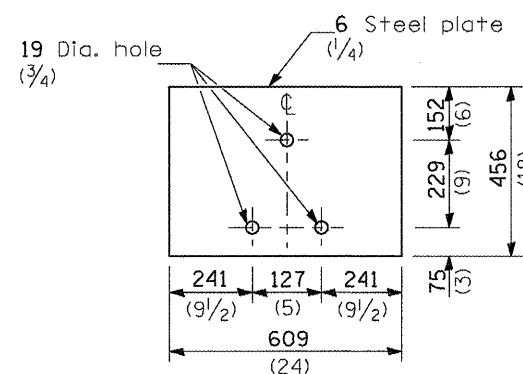
WOOD POST



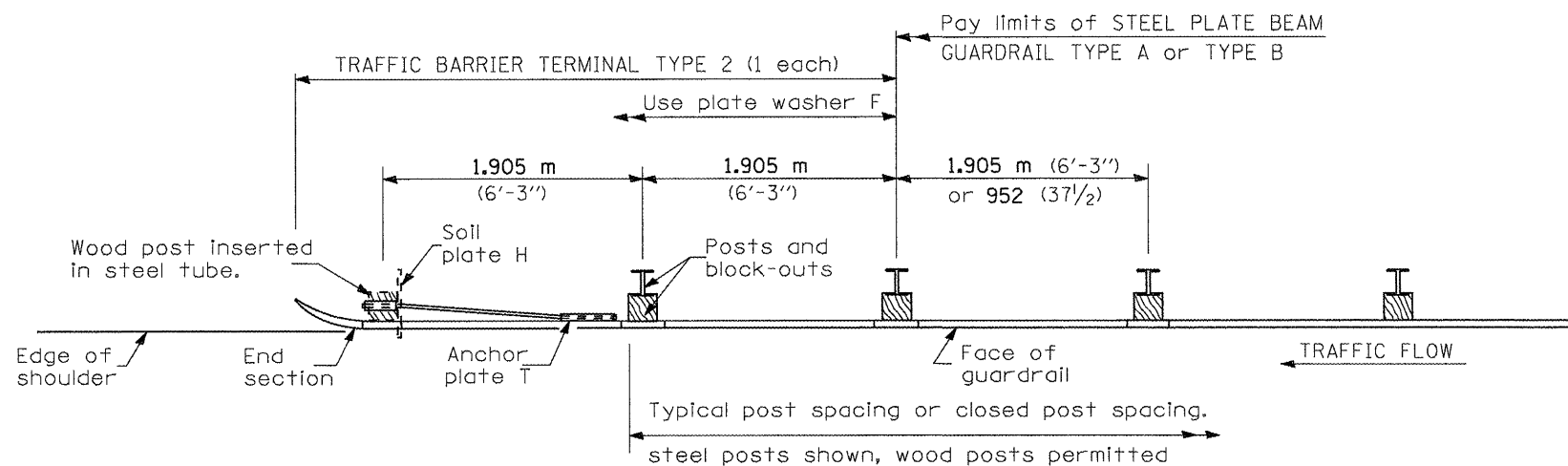
ALTERNATE SOIL PLATE CONNECTION



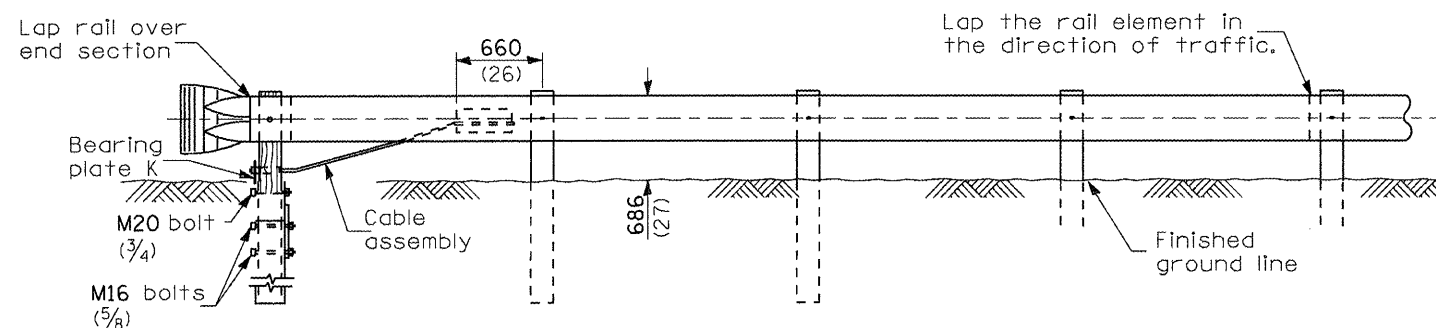
STEEL TUBE



SOIL PLATE H



PLAN



ELEVATION

GENERAL NOTES

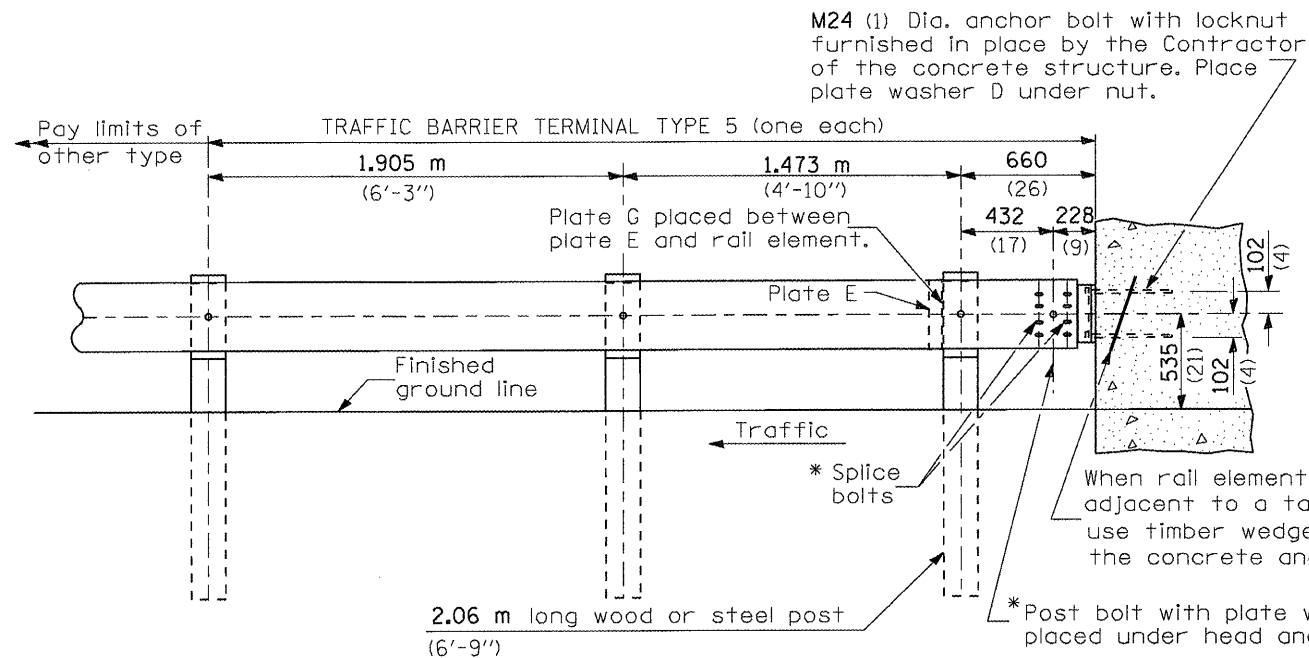
See Standard 630001 for details of guardrail not shown.

Use plate washer F at all posts.

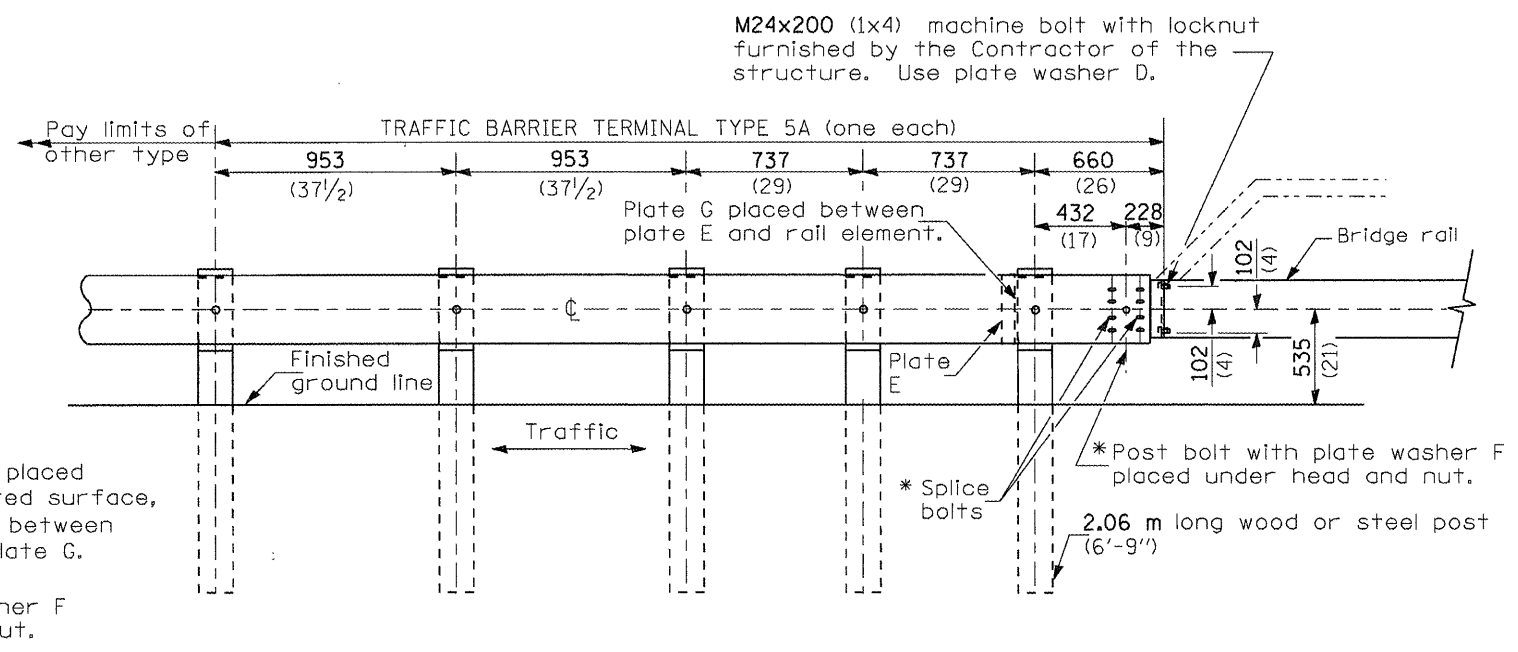
The bearing plate K shall be held in position by (2) two eight penny nails driven into the post and bent over the top of the plate.

All dimensions are in millimeters (inches) unless otherwise shown.

FILE NAME =	USER NAME = Spksgk	DESIGNED -	REVISED -	STATE OF ILLINOIS DEPARTMENT OF TRANSPORTATION	PRE-MGS HIGHWAY STANDARD 631011-02 TRAFFIC BARRIER TERMINAL TYPE 2 EFFECTIVE 4-1-06 (SHEET 1 OF 1)	F.A. RTE. VAR.	SECTION	COUNTY	TOTAL SHEETS	SHEET NO.		
c:\pvt\work\pvt\dot\spksgk\ad0262291\067239-eh-207-631011-02_TrafBarTermType2.dgn	PLLOT SCALE = 0:26.000 ms / in.	DRAWN -	REVISED -			SCALE:	SHEET NO.	OF	SHEETS	STA.	TO STA.	ILLINOIS FED. AID PROJECT
PLLOT DATE = Apr-01-2011 09:44:04AM	DATE -	CHECKED -	REVISED -									CONTRACT NO. 72E39



TYPE 5 - CONCRETE BRIDGE PARAPET



TYPE 5A - STEEL BRIDGE RAIL

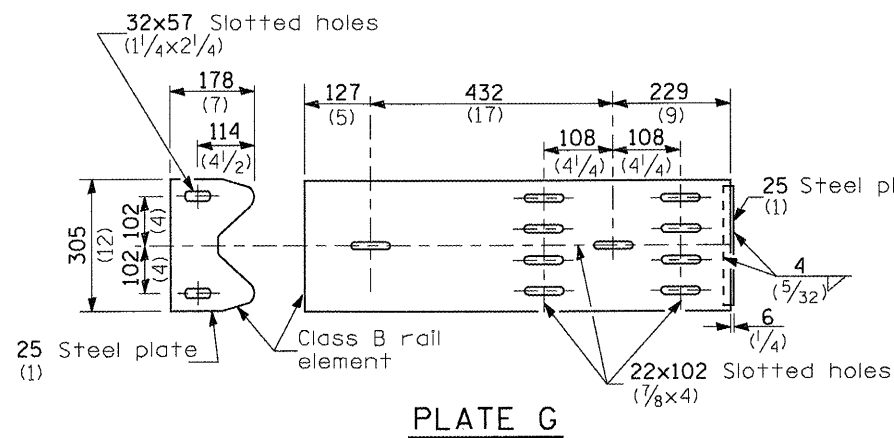


PLATE G

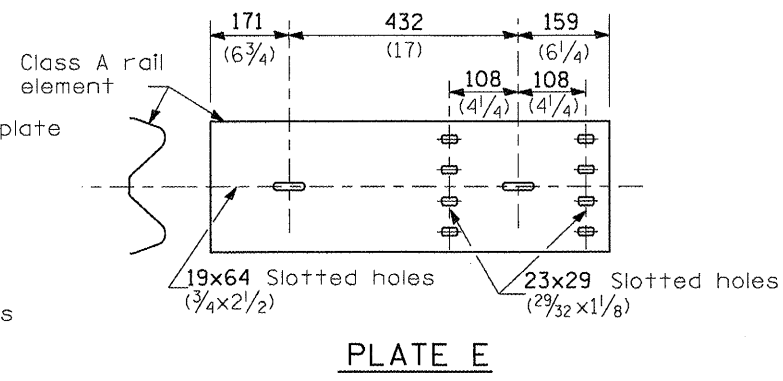
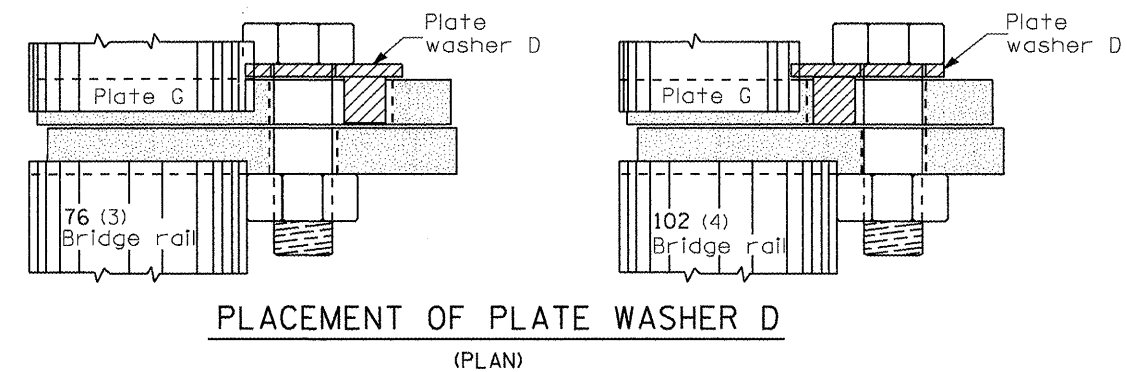


PLATE E



PLACEMENT OF PLATE WASHER D (PLAN)

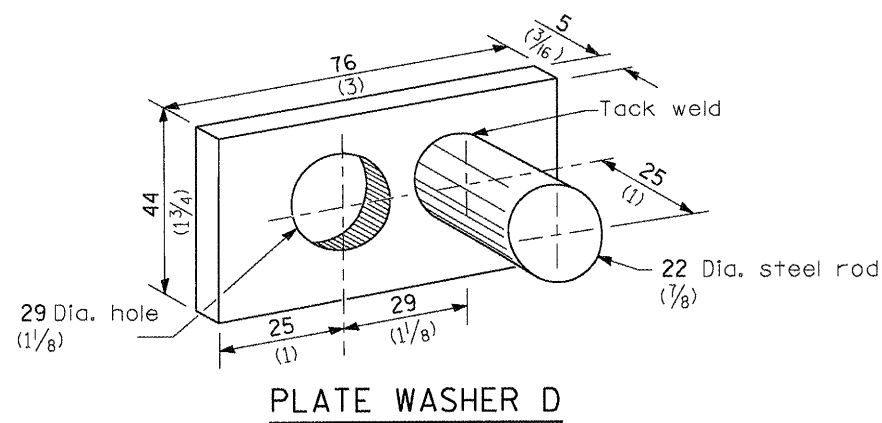
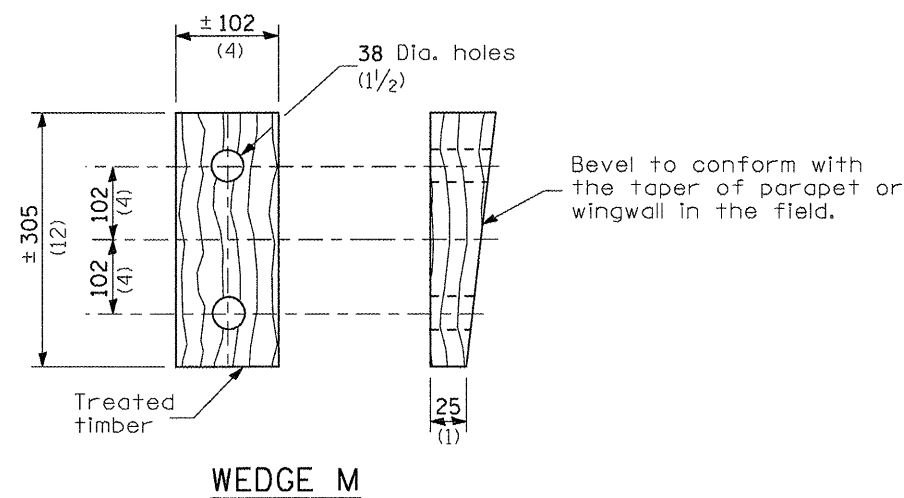


PLATE WASHER D



WEDGE M

GENERAL NOTES

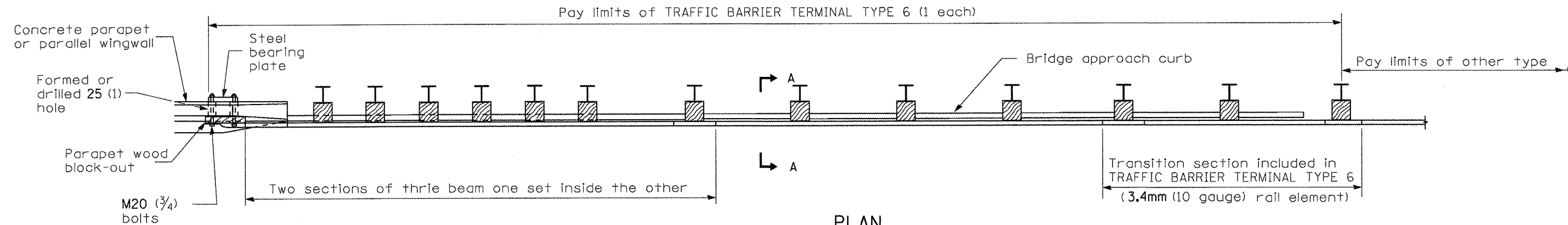
Install plate washer D so that the 25 mm (1") projection fills the remainder of the slotted holes in the 25 mm (1") end plate on plate G after the M24 (1") dia. bolts are in place.

* Bolts shall be provided with locknut or double nut and shall be tightened only to a point that will allow plate G to be free to move when an expansion joint exists below the connector.

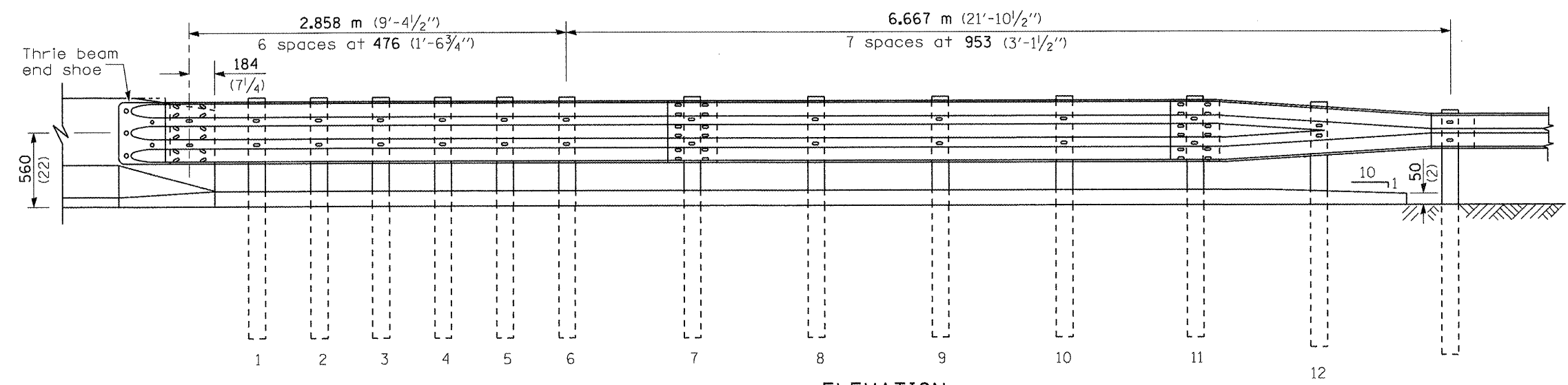
See Standard 630001 for details of guardrail not shown.

All dimensions are in millimeters (inches) unless otherwise shown.

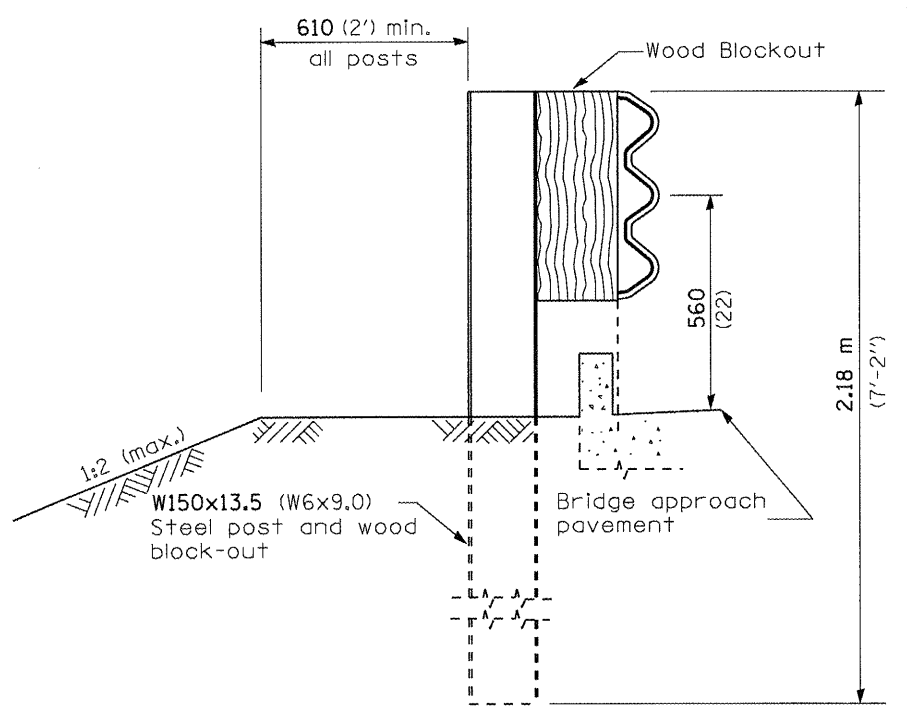
FILE NAME =	USER NAME = Sparksq	DESIGNED -	REVISED -	STATE OF ILLINOIS DEPARTMENT OF TRANSPORTATION	PRE-MGS HIGHWAY STANDARD 631026-02 TRAFFIC BARRIER TERMINAL TYPE 5 & 5A EFFECTIVE 4-1-2006	F.A. RTE.	SECTION	COUNTY	TOTAL SHEETS	SHEET NO.
al\pw_work\p\idot\sparksq\026229\1\067E39-sht-207-631026-02-TrafBarTermType5&5A.d	DRAWN -	REVISED -	VAR			VAR	18	14		
PLDT SCALE = 0:26.000 m / in.	CHECKED -	REVISED -								
PLDT DATE = Apr-01-2011 09:44:09AM	DATE	REVISED -								
					SCALE:	SHEET NO.	OF SHEETS	STA.	TO STA.	CONTRACT NO. 72E39



PLAN



ELEVATION



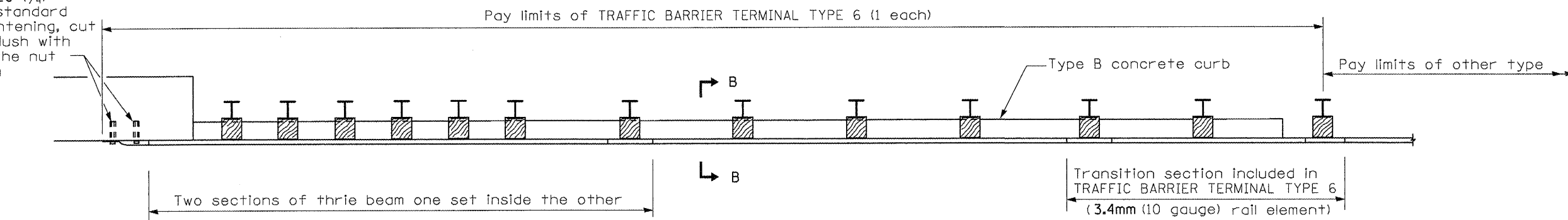
SECTION A-A

GENERAL NOTES

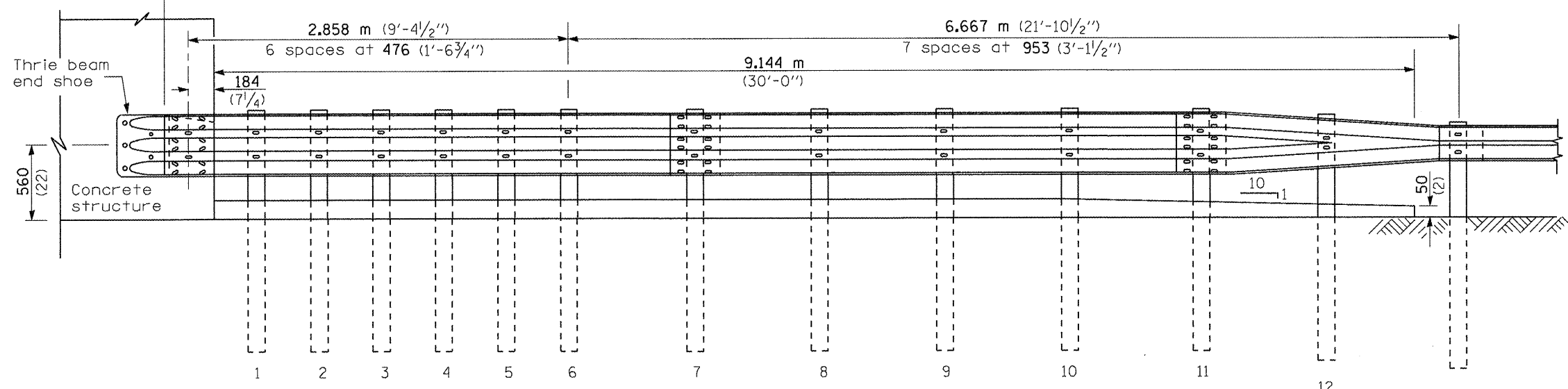
- See Standard 630001 for details of guardrail not shown.
- Thrie beam rail shall be bolted to block-out at all posts.
- See Standard 420401 for details of bridge approach pavement.
- All slope ratios are expressed as units of vertical displacement to units of horizontal displacement (V:H).
- All dimensions are in millimeters (inches) unless otherwise shown.

FILE NAME *	USER NAME * Sparksg	DESIGNED -	REVISED -	STATE OF ILLINOIS DEPARTMENT OF TRANSPORTATION	PRE-MGS HIGHWAY STANDARD 631031-05 TRAFFIC BARRIER TERMINAL, TYPE 6 EFFECTIVE 4-1-06 (SHEET 1 OF 3)	F.A. RTE.	SECTION	COUNTY	TOTAL SHEETS	SHEET NO.
ci:\pwork\p\idot\sparksg\d0262291\067E39-sh-t-207-631031-05_TrafBarTermType6.dgn	PLOT SCALE * 0:26.000 mm / in.	DRAWN -	REVISED -			VAR	*	VAR	18	15
PLOT DATE * Apr-01-2011 09:44:15AM	DATE -	CHECKED -	REVISED -			SCALE:	SHEET NO. OF SHEETS	STA.	TO STA.	CONTRACT NO. 72E39
										ILLINOIS FED. AID PROJECT

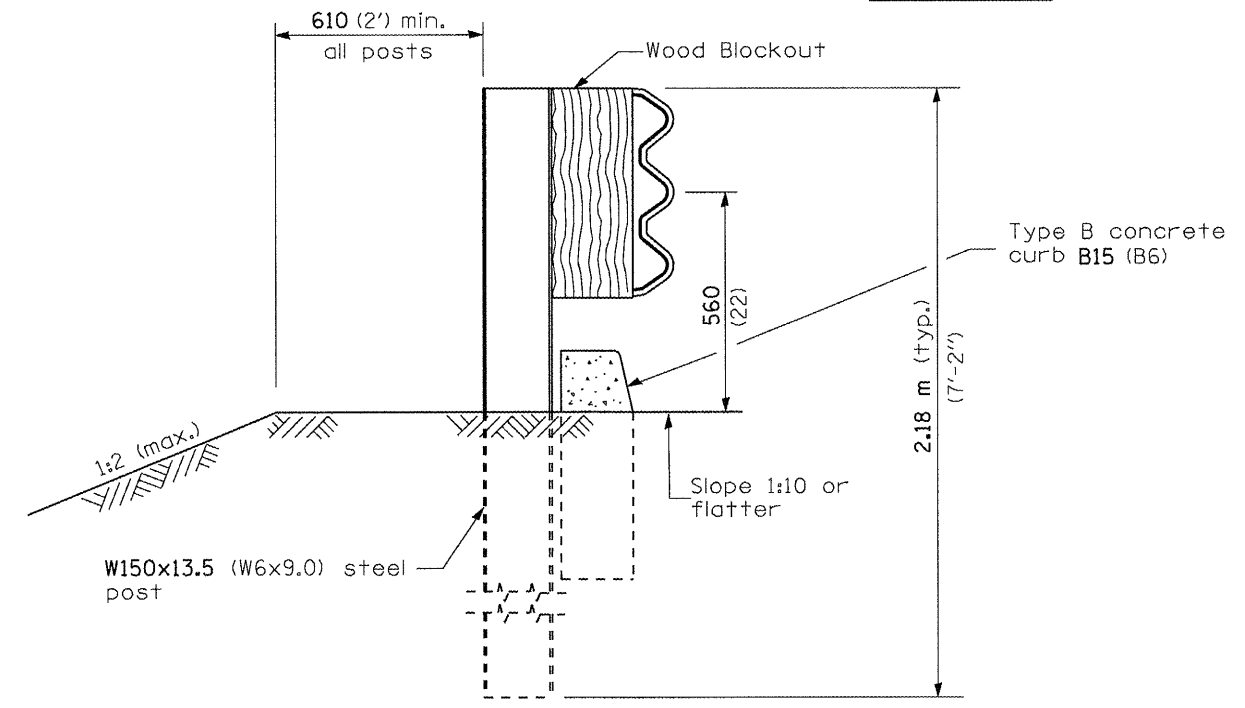
5 Epoxy grouted M20 (¾") anchor bolts with standard washers. After tightening, cut the anchor bolts flush with nuts, and damage the nut to prevent it from loosening.



PLAN

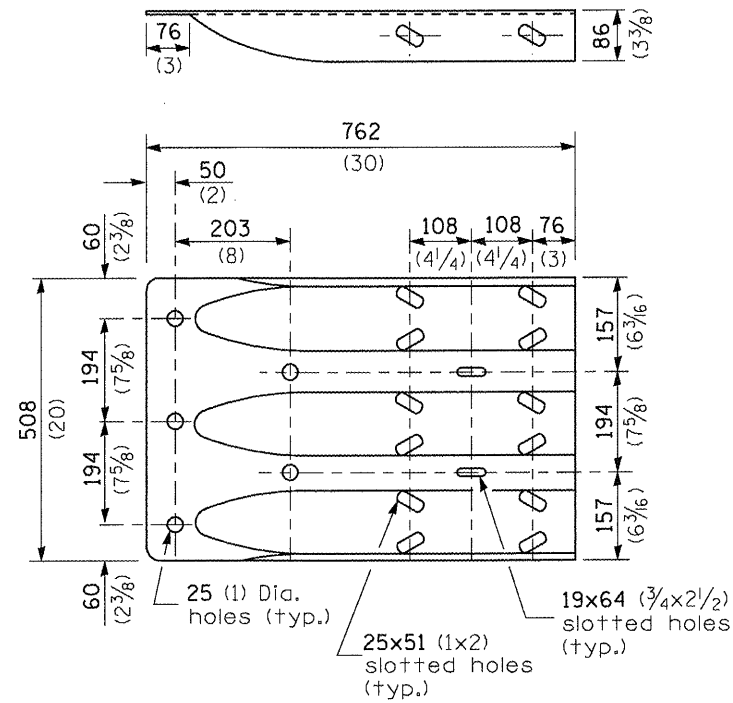


ELEVATION

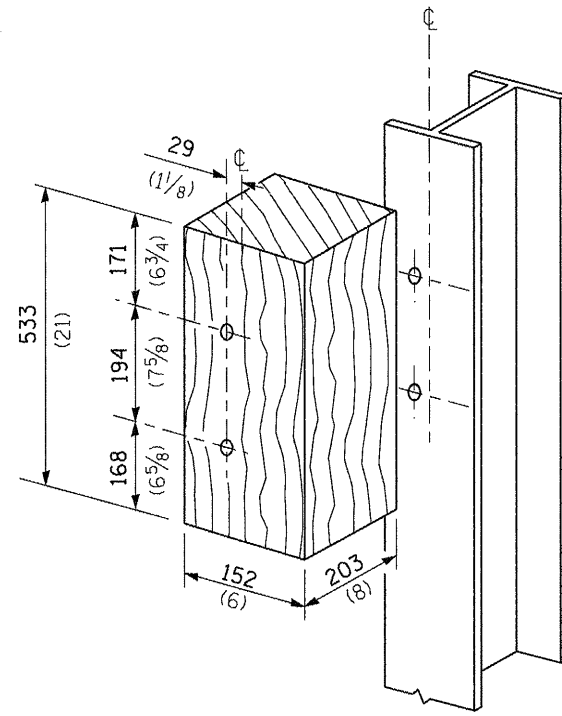


SECTION B-B

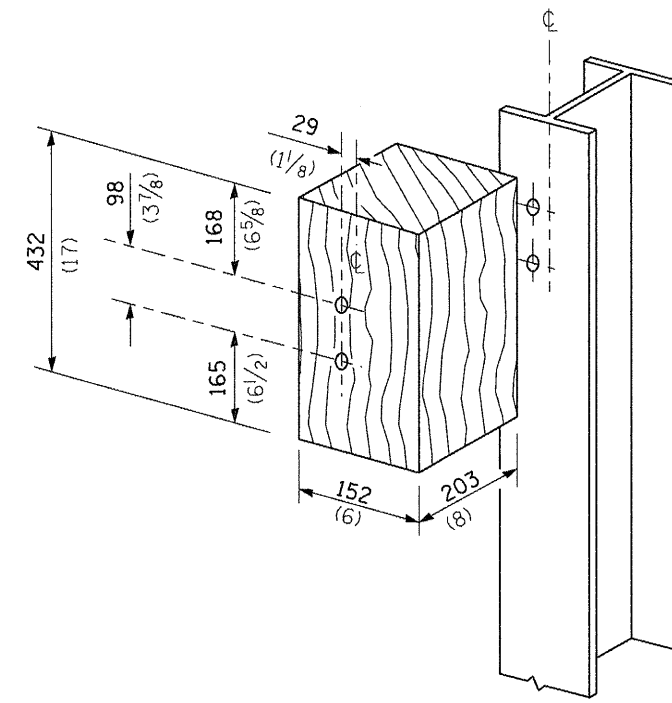
FILE NAME *	USER NAME * Sparkgw	DESIGNED -	REVISED -	STATE OF ILLINOIS DEPARTMENT OF TRANSPORTATION	PRE-MGS HIGHWAY STANDARD 631031-05 TRAFFIC BARRIER TERMINAL, TYPE 6 EFFECTIVE 4-1-06	F.A. RTE.	SECTION	COUNTY	TOTAL SHEETS	SHEET NO.	
c:\pwwork\pwwork\sparkgw\d0262291\067231-ah-207-631031-05_TrafficBarrierTerminalType6.dgn	PLDT SCALE = 0:26.000 ms / in.	DRAWN -	REVISED -			VAR	*	VAR	18	16	
PLDT DATE = Apr-01-2011 09:44:55AM	DATE -	CHECKED -	REVISED -			(SHEET 2 OF 3)		CONTRACT NO. 72E39		ILLINOIS FED. AID PROJECT	
						SCALE:	SHEET NO. OF SHEETS	STA.	TO STA.	* D6 CABLE/GUARDRAIL REPAIR 2011	



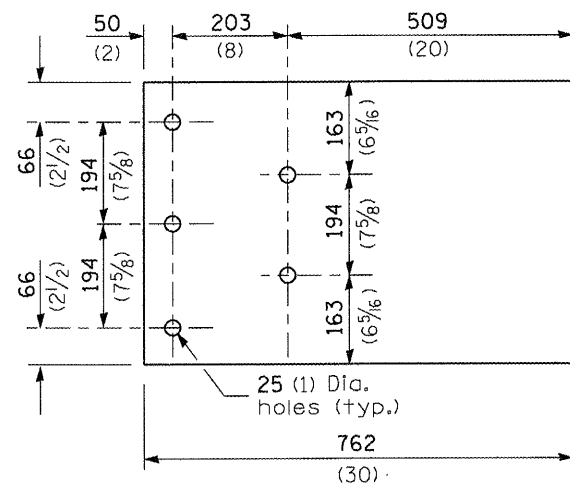
THRIE BEAM END SHOE DETAIL



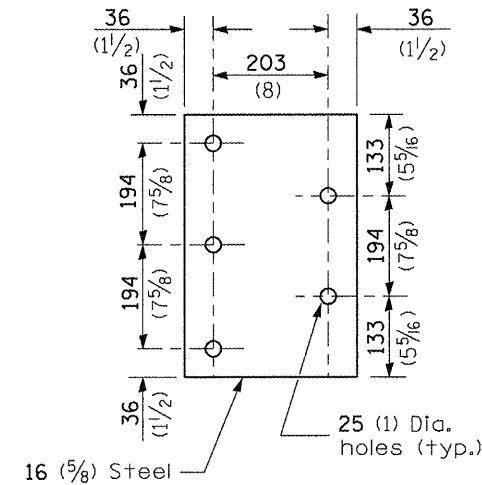
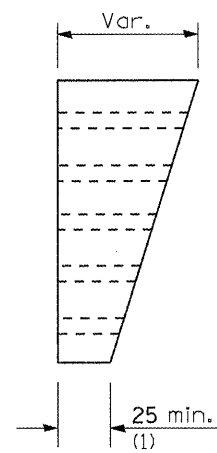
POSTS 1-11 WOOD BLOCKOUT DETAIL



POST 12 WOOD BLOCKOUT DETAIL



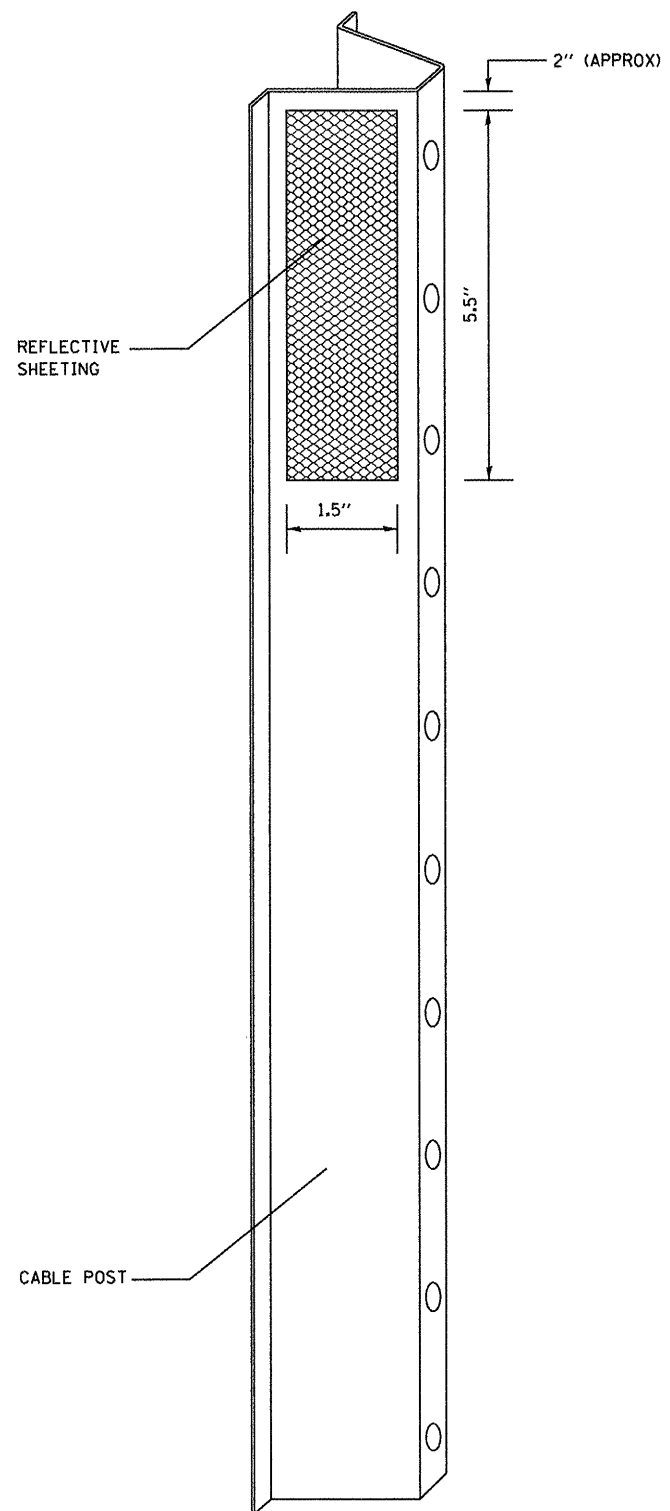
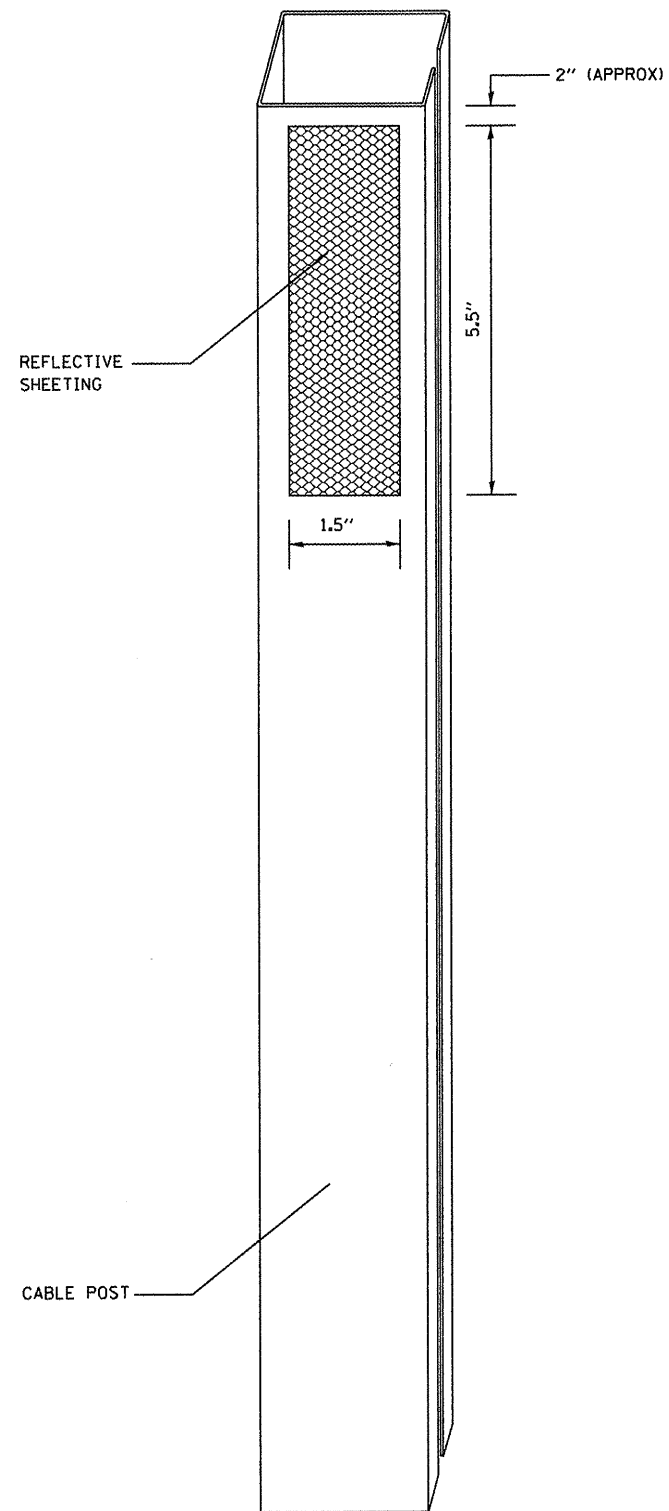
PARAPET WOOD BLOCK-OUT DETAIL



PARAPET STEEL BEARING PLATE DETAIL

(5 each individual 125x125x16 (5x5x5/8) steel plates with centered 25 (1) holes may be substituted for the plate shown.)

FILE NAME =	USER NAME = Sparksg	DESIGNED -	REVISED -	STATE OF ILLINOIS DEPARTMENT OF TRANSPORTATION	PRE-MGS HIGHWAY STANDARD 631031-05 TRAFFIC BARRIER TERMINAL, TYPE 6 EFFECTIVE 4-1-06	F.A. RTE.	SECTION	COUNTY	TOTAL SHEETS	SHEET NO.
es:\pv\work\pwidot\sparksg\d026229\1\0672E39-ahs-207-631031-05-TrafficBarrierType6.dgn	PLOT SCALE = 0:26,000 ms / in.	DRAWN -	REVISED -			VAR	*	VAR	18	17
	PLOT DATE = Apr-01-2011 09:44:15AM	CHECKED -	REVISED -			(SHEET 3 OF 3)			CONTRACT NO. 72E39	
		DATE -	REVISED -			SCALE:	SHEET NO.	OF	SHEETS	STA.



NOTES:

MATERIAL: THE MATERIAL SHALL BE IN ACCORDANCE WITH SECTION 1090 AND 1091 OF THE STANDARD SPECIFICATIONS.

CONSTRUCTION REQUIREMENTS: THE REFLECTIVE SHEETING SHALL BE INSTALLED DIRECTLY ON THE CABLE POSTS. THE REFLECTIVE SHEETING SHALL BE INSTALLED AS SHOWN IN THE PLANS, ON EVERY OTHER POST (IN ORDER TO PROVIDE A SPACING OF 40'). THE SURFACE OF THE POST SHALL BE CLEANED OF ALL CONTAMINANTS PRIOR TO THE INSTALLATION OF THE REFLECTIVE SHEETING. THE SURFACE SHALL BE CLEANED USING A 5-8 PERCENT PHOSPHORIC ACID SOLUTION AND RINSED WITH CLEAN WATER OR AS RECOMMENDED BY THE MANUFACTURER OF THE REFLECTIVE SHEETING AND AS APPROVED BY THE ENGINEER.

BASIS OF PAYMENT: THIS WORK WILL BE PAID FOR AT THE CONTRACT UNIT PRICE EACH FOR CABLE GUARD MARKER.

FILE NAME =	USER NAME = Sparksgw	DESIGNED -	REVISED -	STATE OF ILLINOIS DEPARTMENT OF TRANSPORTATION	DETAILS			F.A. RTE.	SECTION	COUNTY	TOTAL SHEETS	SHEET NO.
c:\pw_work\pwidot\sparksgw\d0262291\0672E39-sht-details.dgn		DRAWN -	REVISED -		VAR	.	VAR	18	18			
PLDT SCALE = 100.0000' / in.		CHECKED -	REVISED -		SCALE: SHEET NO. OF SHEETS STA. TO STA.			CONTRACT NO. 72E39				
PLDT DATE = Apr-01-2011 09:44:20AM		DATE -	REVISED -		ILLINOIS FED. AID PROJECT							