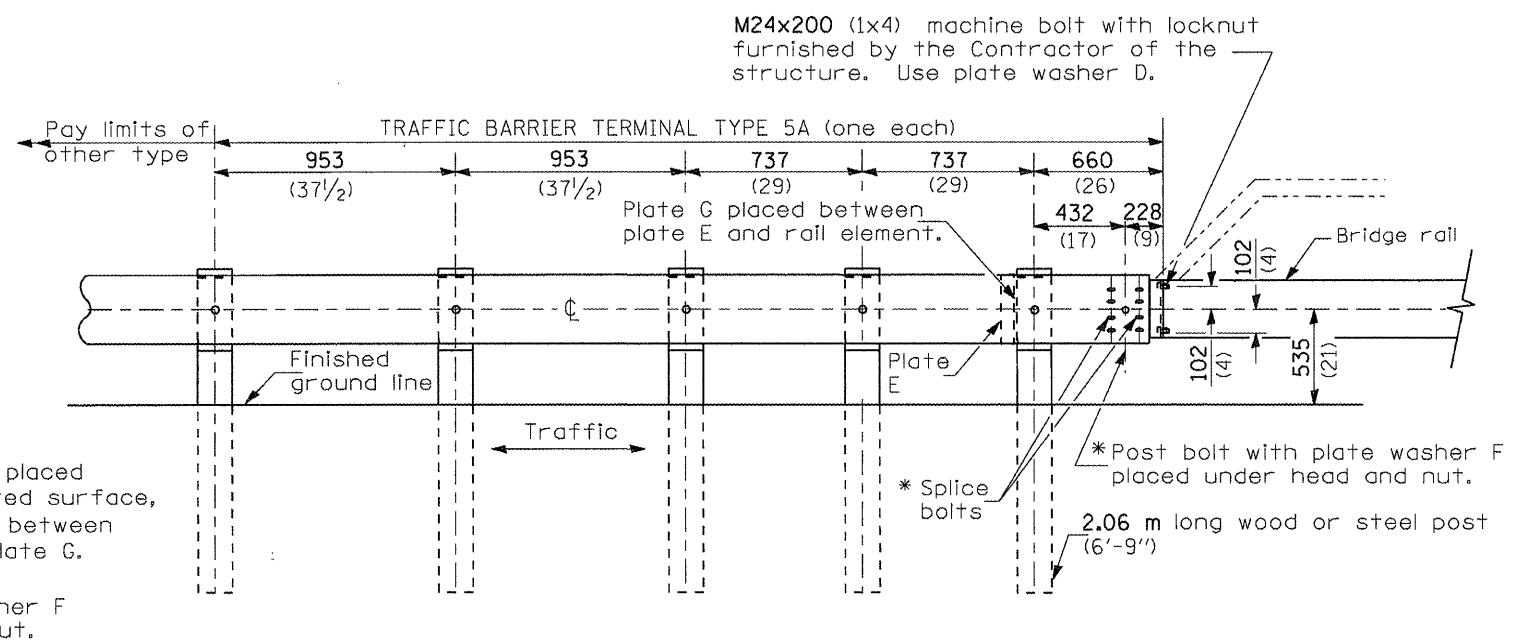


TYPE 5 - CONCRETE BRIDGE PARAPET



TYPE 5A - STEEL BRIDGE RAIL

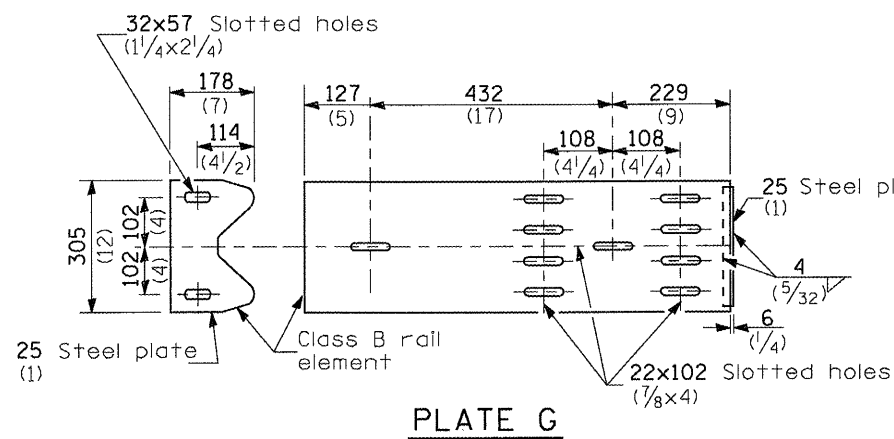


PLATE G

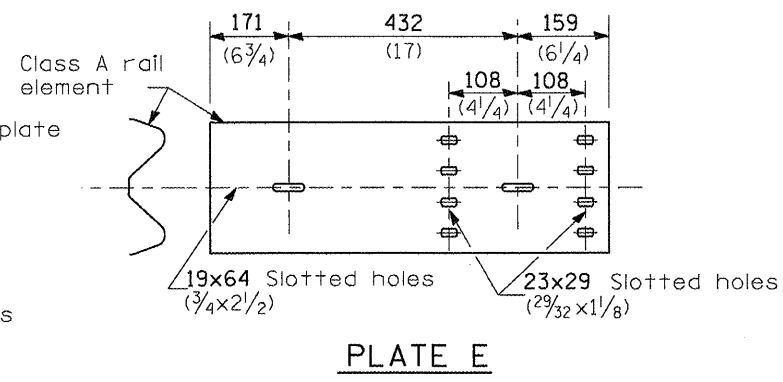
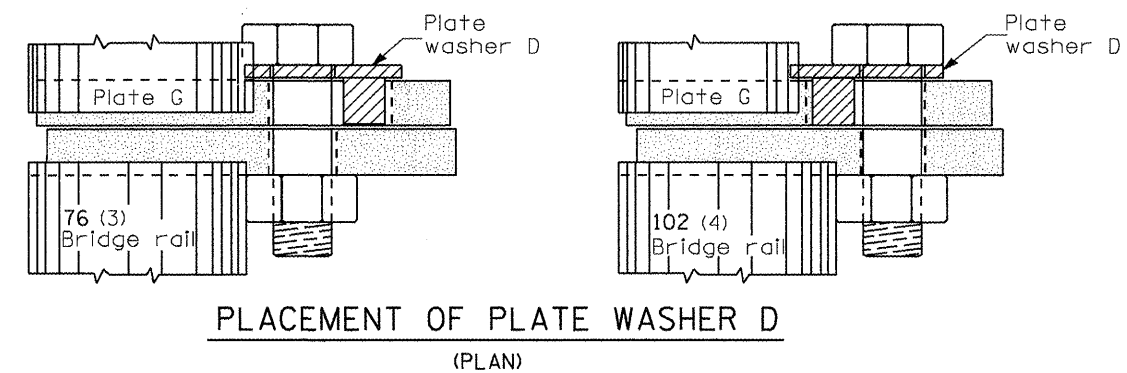


PLATE E



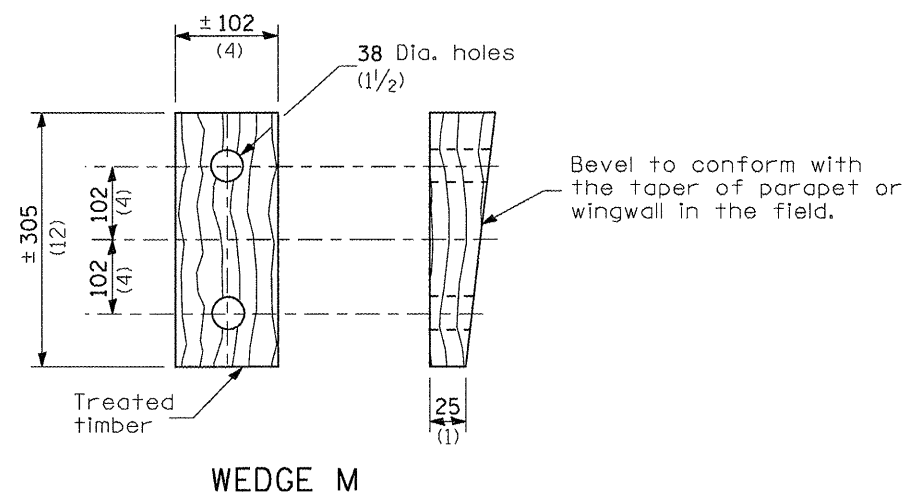
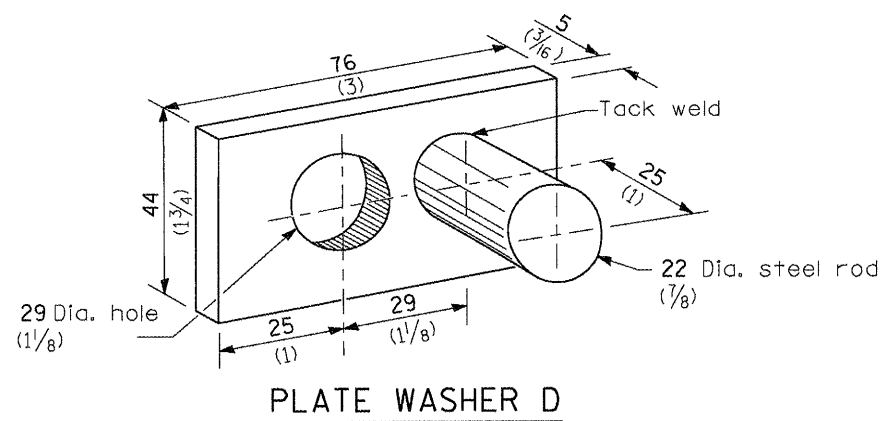
GENERAL NOTES

Install plate washer D so that the 25 mm (1") projection fills the remainder of the slotted holes in the 25 mm (1") end plate on plate G after the M24 (1") dia. bolts are in place.

* Bolts shall be provided with locknut or double nut and shall be tightened only to a point that will allow plate G to be free to move when an expansion joint exists below the connector.

See Standard 630001 for details of guardrail not shown.

All dimensions are in millimeters (inches) unless otherwise shown.



FILE NAME =	USER NAME = Sparksq	DESIGNED -	REVISED -	STATE OF ILLINOIS DEPARTMENT OF TRANSPORTATION	PRE-MGS HIGHWAY STANDARD 631026-02 TRAFFIC BARRIER TERMINAL TYPE 5 & 5A EFFECTIVE 4-1-2006	F.A. RTE.	SECTION	COUNTY	TOTAL SHEETS	SHEET NO.
al\pw\work\p\idots\sparksq\d026229\1\067E39-sht-207-631026-02-TrafBarTermType5&5A.d	DRAWN -	REVISED -	VAR			VAR	18	14		
PLOT SCALE = 0:26.000 m / in.	CHECKED -	REVISED -	SCALE:			SHEET NO. OF SHEETS	STA.	TO STA.	CONTRACT NO. 72E39	
PLOT DATE = Apr-01-2011 09:44:09AM	DATE -	REVISED -	ILLINOIS FED. AID PROJECT							