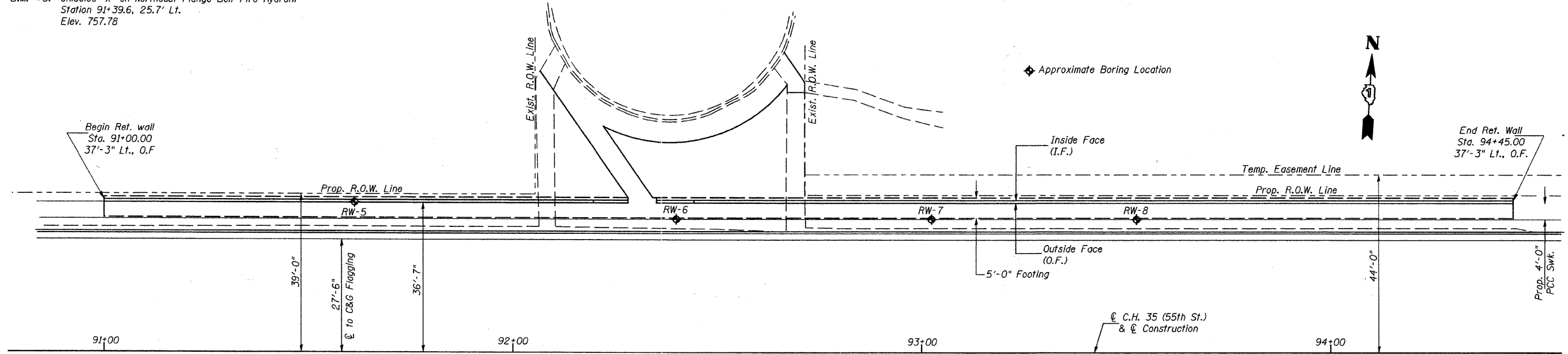
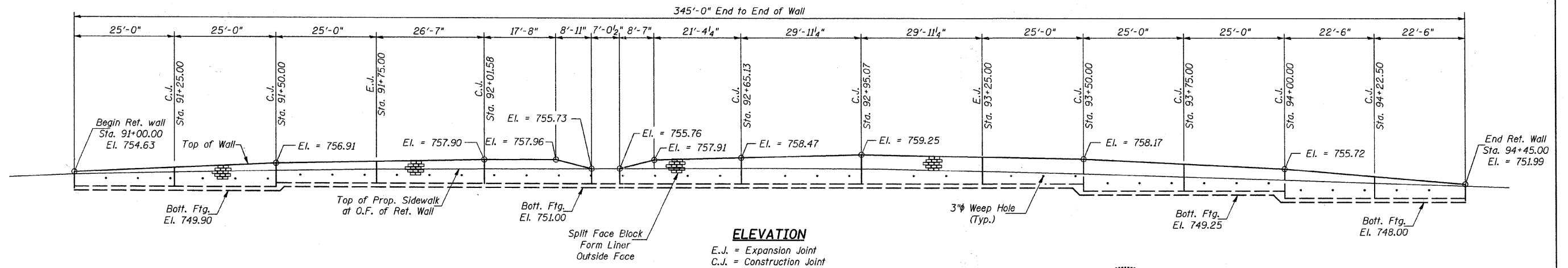


B.M. #5: Chiseled "X" on Northeast Flange Bolt Fire Hydrant
 Station 91+39.6, 25.7' Lt.
 Elev. 757.78



PLAN



ELEVATION

GENERAL NOTES

Reinforcement bars shall conform to the requirements of ASTM A 706 Grade 60

Reinforcement bars designated (E) shall be epoxy coated.

For Total Bill of Material, See Sh. 5 of 5.

For Borings, see Special Provisions.

Fill placement must not vary >1' in elevation on either side of wall until fill at front face (Outside Face) is fully placed.

Concrete in Concrete Retaining Wall to be paid for as Concrete Structures.

DESIGNED	JOH
CHECKED	BAN
DRAWN	TAC
CHECKED	JOH

DESIGN SPECIFICATIONS

AASHTO 17th Edition, 2002

DESIGN STRESSES

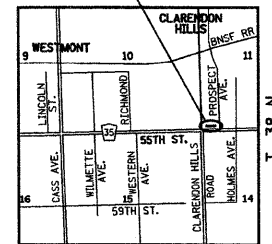
FIELD UNITS

(Concrete)
 $f'_c = 3,500$ p.s.i.
 (Reinforcement Bars)
 $f_y = 60,000$ p.s.i.

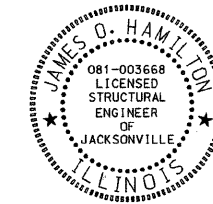
SEISMIC DATA

Seismic Performance Zone (SPC) = A
 Bedrock Acceleration Coefficient (A) = 0.035g
 Soil Site Class = 1.0

Project Location
 R. 11 E. 3rd P.M.



LOCATION SKETCH



Expires: 11/30/2012

James O. Hamilton
 Signature

6/22/2011
 Date

RETAINING WALL #3
GENERAL PLAN & ELEVATION
C.H. 35 (55TH STREET)
SECTION 94-00302-00-FP
DU PAGE COUNTY
STA. 91+00.00 TO STA. 94+45.00

HUTCHISON ENGINEERING, INC. Jacksonville & Shorewood, Illinois Date: 2011	SHEET NO. 1 5 SHEETS	RTE. NO.	SECTION	COUNTY	TOTAL SHEETS	SHEET NO.
		CH 35	94-00302-00-FP	DU PAGE	240	150
				CONTRACT NO. 63609		
				ILLINOIS FED. AID PROJECT		