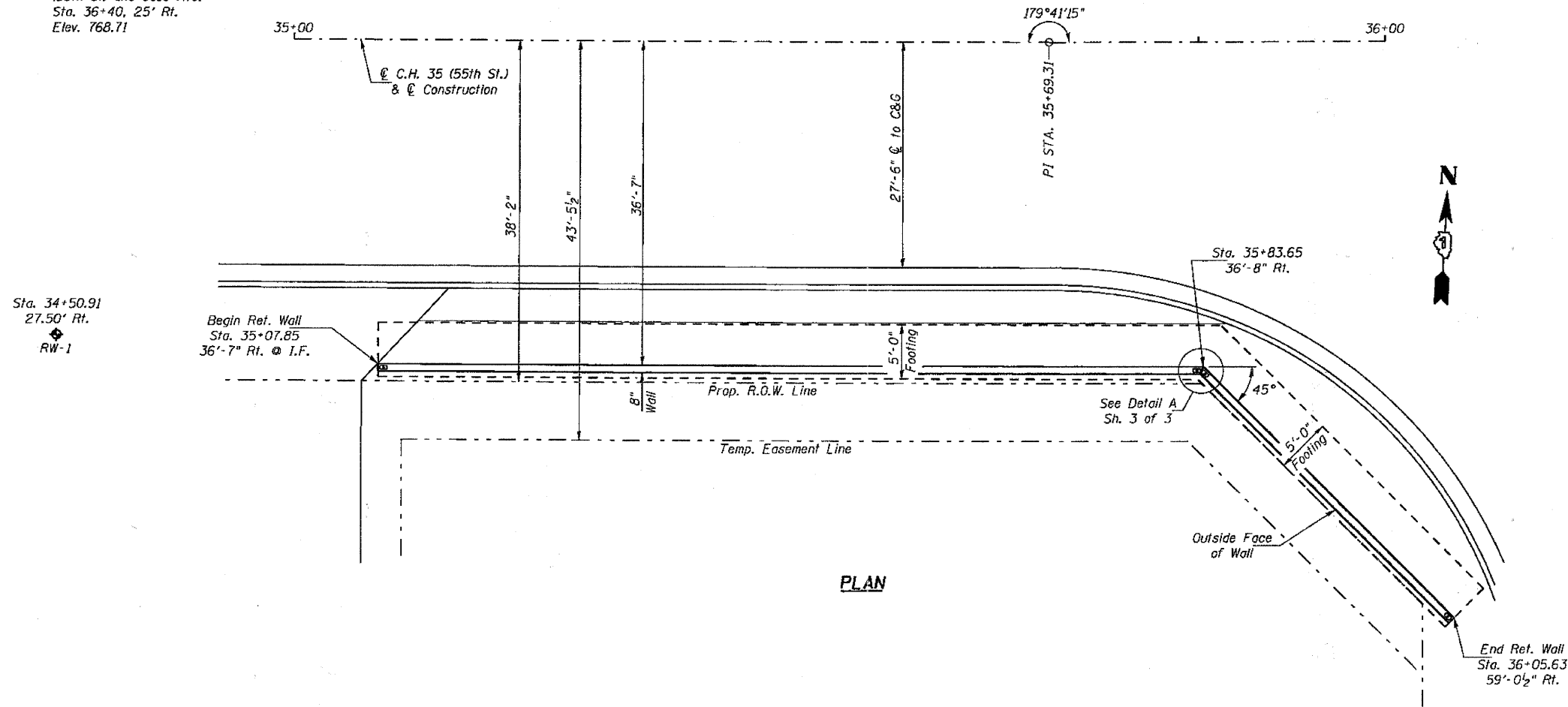
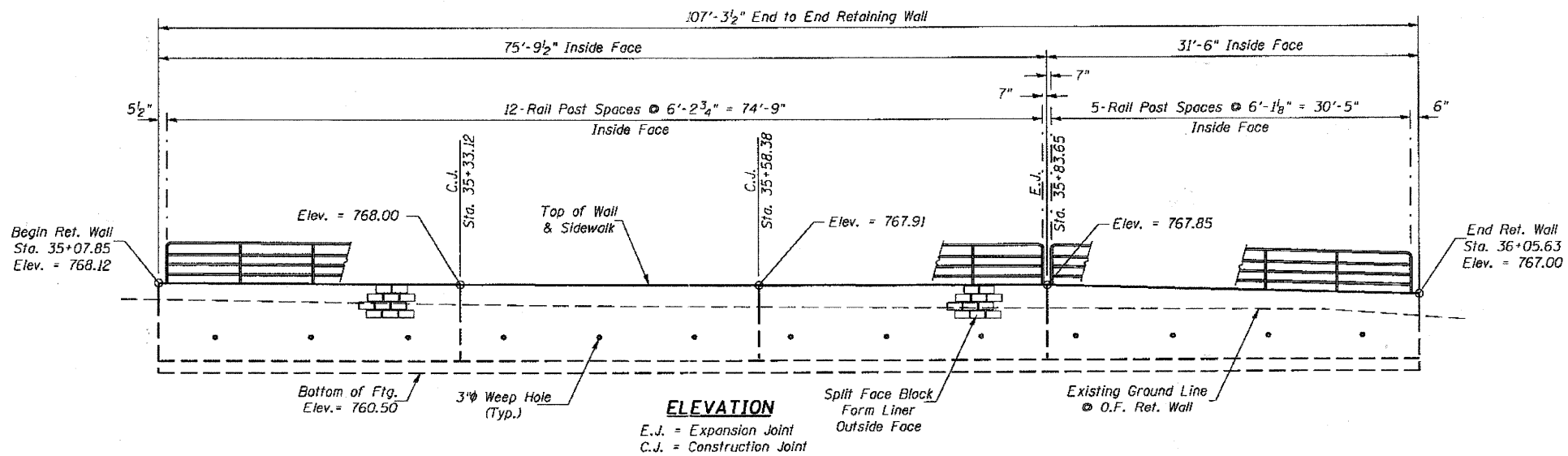


B.M. #7: Chiseled "X" on Northeast Bolt of Large Traffic Signal Base @ Southeast Quadrant of CH 35 (55th St) and Cass Ave. Sta. 36+40, 25' Rt. Elev. 768.71



PLAN

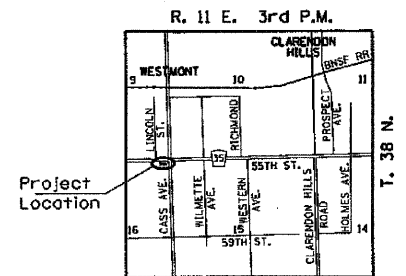


ELEVATION

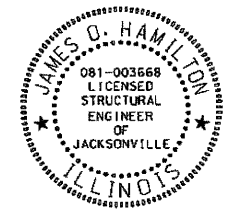
E.J. = Expansion Joint
C.J. = Construction Joint

GENERAL NOTES

Reinforcement bars shall conform to the requirements of ASTM A 706 Grade 60
Reinforcement bars designated (E) shall be epoxy coated.
For Total Bill of Material, See Sh. 3 of 3.
For Borings, see Special Provisions.
Concrete in Concrete Retaining Wall to be paid for as Concrete Structures.



LOCATION SKETCH



Expires: 11/30/2012

James O. Hamilton
Signature
5/13/2011
Date

**RETAINING WALL #1
GENERAL PLAN & ELEVATION
C.H. 35 (55TH STREET)
SECTION 94-00302-00-FP
DU PAGE COUNTY
STA. 35+07.86 TO STA. 36+05.16**

DESIGNED	JOH
CHECKED	BAN
DRAWN	TAC
CHECKED	JOH

DESIGN STRESSES

FIELD UNITS
(Concrete)
f'c = 3,500 p.s.i.
(Reinforcement Bars)
fy = 60,000 p.s.i.

DESIGN SPECIFICATIONS

AASHTO 17th Edition, 2002

HUTCHISON ENGINEERING, INC.
Jacksonville & Shorewood, Illinois
Date: 2011

SHEET NO. 1
3 SHEETS

P.A.U. RTE.	SECTION	COUNTY	TOTAL SHEETS	SHEET NO.
1504	94-00302-00-FP	DU PAGE	240	144
ILLINOIS			CONTRACT NO. 63609 FED. AID PROJECT	