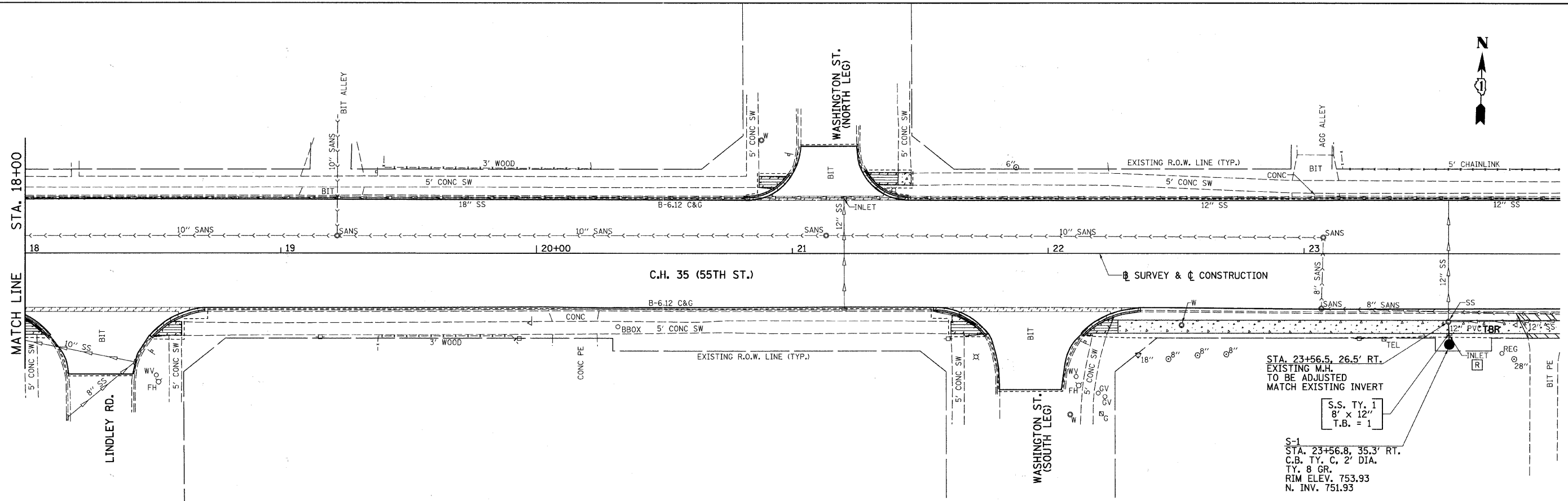


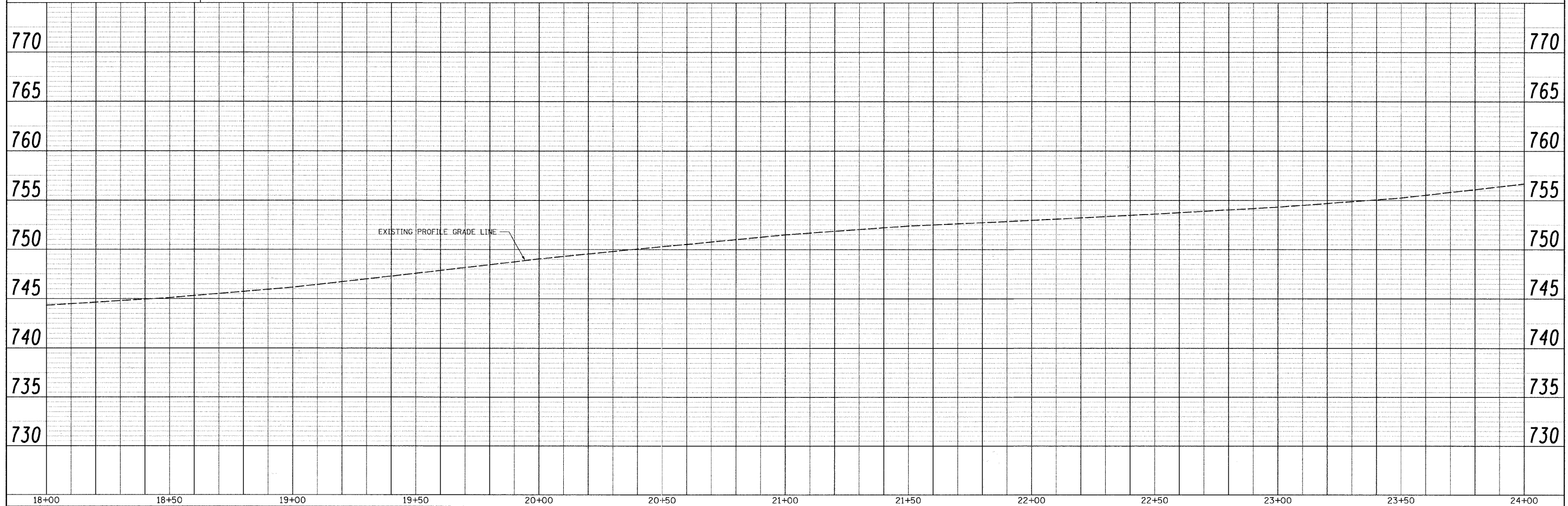


PLAN	SURVEYED	BY	DATE
	PLANNED		
	NOTED		
	REVISIONS		
	NO. OF WAY CHECKED		
	PAID FILE NAME		
	NO.		

PROFILE	SURVEYED	BY	DATE
	PLANNED		
	NOTED		
	REVISIONS		
	NO. OF WAY CHECKED		
	STRUCTURE NOTATIONS		
	NO.		



STA. 23+56.5, 26.5' RT.  
 EXISTING M.H.  
 TO BE ADJUSTED  
 MATCH EXISTING INVERT  
 S.S. TY. 1  
 8' x 12"  
 T.B. = 1  
 S-1  
 STA. 23+56.8, 35.3' RT.  
 C.B. TY. C. 2' DIA.  
 TY. 8 GR.  
 RIM ELEV. 753.93  
 N. INV. 751.93



FILE NAME =	USER NAME = shughes	DESIGNED -	REVISED -	<b>STATE OF ILLINOIS DEPARTMENT OF TRANSPORTATION</b>	<b>C.H. 35 (55TH ST.) DRAINAGE PLAN &amp; PROFILE</b>			F.A.U. RTE.	SECTION	COUNTY	TOTAL SHEETS	SHEET NO.
v:\2791\2791d001.dgn		DRAWN -	REVISED -		1504	94-00302-00-FP	DU PAGE	240	103			
		CHECKED -	REVISED -		CONTRACT NO. 63609							
		DATE -	REVISED -		ILLINOIS FED. AID PROJECT							
PLLOT SCALE = 20.0000' / IN. PLLOT DATE = 5/19/2011				SCALE: H=20 V=5 SHEET NO. 2 OF 11 SHEETS		STA. 18+00 TO STA. 24+00						