

**STATE OF ILLINOIS
DEPARTMENT OF TRANSPORTATION
DIVISION OF HIGHWAYS**

**FAU 1374 (BELMONT AVENUE)
77TH COURT TO 76TH COURT
STREETSCAPE
SECTION No. 10-00112-00-LS
PROJECT No. TE - 00D1(838)
VILLAGE OF ELMWOOD PARK
COOK COUNTY
JOB NO. C-91-115-11**

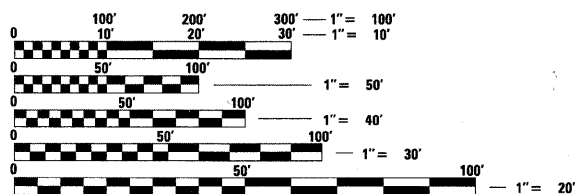
F.A.U. RTE.	SECTION	COUNTY	TOTAL SHEETS	SHEET NO.
1374	10-00112-00-LS	COOK	23	1
FED. ROAD DIST. NO. 1		ILLINOIS	CONTRACT NO. 63608	

<u>DESCRIPTION</u>	<u>INDEX OF SHEETS</u>	<u>SHEET NO.</u>
TITLE SHEET		1
GENERAL NOTES, IDOT STANDARDS AND SUMMARY OF QUANTITIES		2
TYPICAL SECTIONS		3
ALIGNMENTS, TIES & BENCHMARKS		4
EXISTING CONDITIONS & REMOVAL PLAN		5
77TH COURT PROPOSED PLAN & PROFILE		6
BELMONT AVENUE PROPOSED PLAN & PROFILE		7-8
CONSTRUCTION DETAILS		9
LIGHTING GENERAL NOTES		10
LIGHTING PLAN		11
LIGHTING DETAILS		12-14
DISTRICT ONE DETAILS		15-17
77TH COURT CROSS SECTIONS		18
BELMONT AVENUE CROSS SECTIONS		19-23

<u>DISTRICT ONE DETAILS</u>	
PAVEMENT PATCHING OR HMA SURFACED PAVEMENT	BD22
TYPICAL PAVEMENT MARKINGS	TC13
TRAFFIC CONTROL & PROTECTION FOR SIDEROADS, INTERSECTIONS AND DRIVEWAY	TC10

TRAFFIC DATA (BELMONT AVENUE)
DESIGN DESIGNATION: MINOR ARTERIAL (URBAN)
ADT = 21,700 VPD (2009)
POSTED SPEED LIMIT = 35 MPH

TRAFFIC DATA (77TH COURT)
DESIGN DESIGNATION: MINOR ARTERIAL (URBAN)
ADT = < 5000 VPD
POSTED SPEED LIMIT = 25 MPH



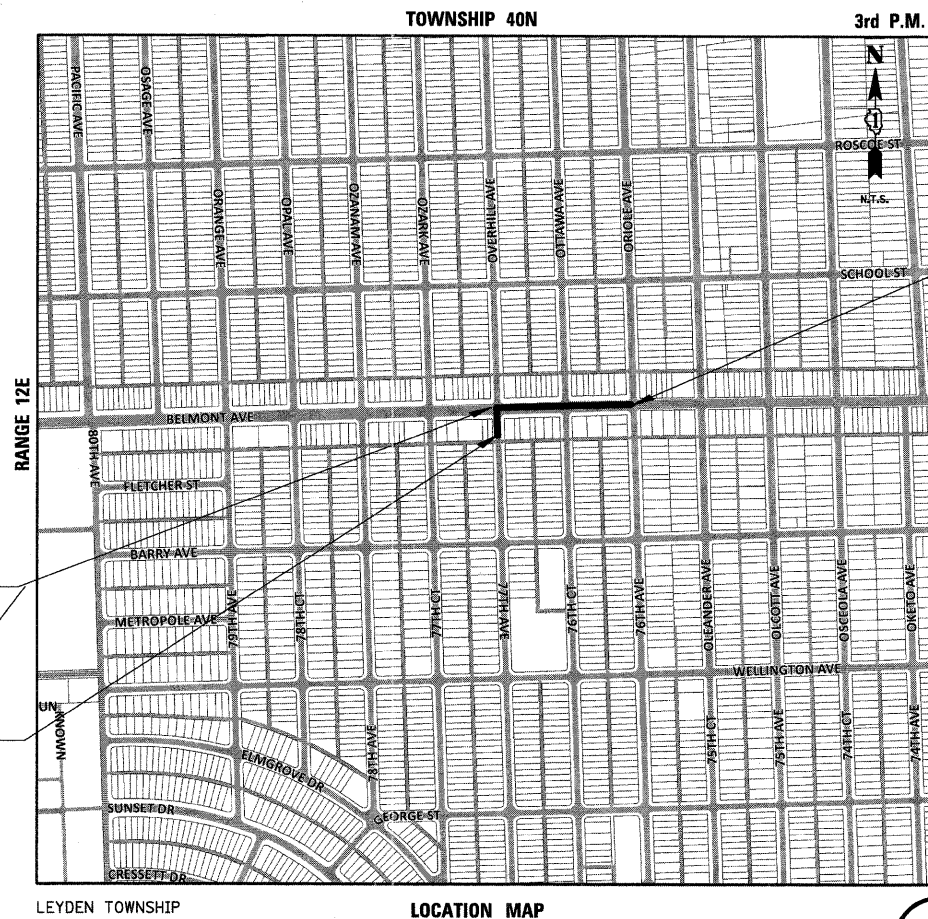
FULL SIZE PLANS HAVE BEEN PREPARED USING STANDARD
ENGINEERING SCALES. REDUCED SIZED PLANS WILL NOT
CONFORM TO STANDARD SCALES. IN MAKING MEASUREMENTS
ON REDUCED PLANS, THE ABOVE SCALES MAY BE USED.

J.U.L.I.E.
JOINT UTILITY LOCATION INFORMATION FOR EXCAVATION
1-800-892-0123

CONTRACT NO. 63608



CHRISTOPHER B. BURKE ENGINEERING LTD.
9575 West Higgins Road, Suite 600
Rosemont, Illinois 60018 (847) 823-0500



**PROJECT BEGINS
STA. 10+00.00**

**77TH CT BEGINS
STA. 30 + 37.03**

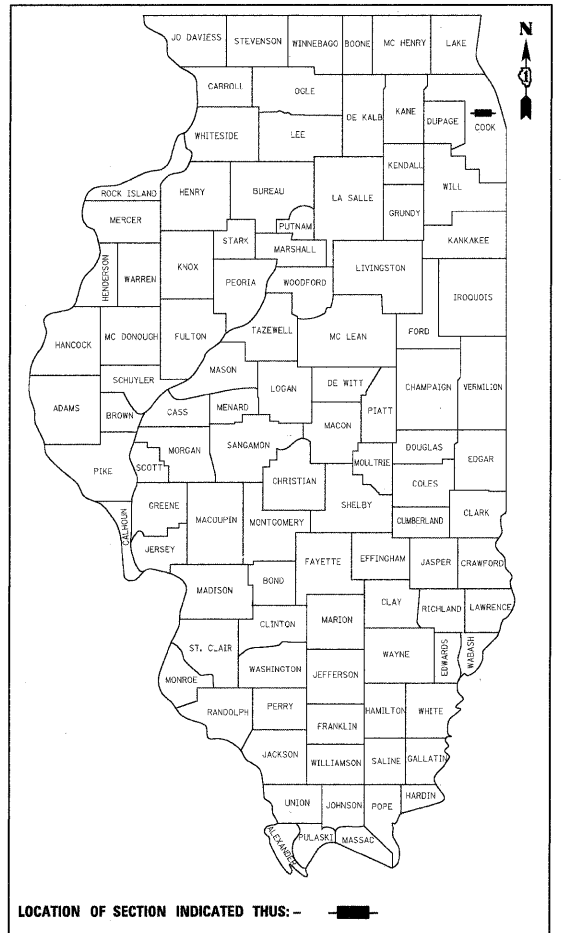
GROSS LENGTH OF PROJECT = 850 LF (0.16 MI)
NET LENGTH OF PROJECT = 850 LF (0.16 MI)



ANTHONY J. DERICO
ILLINOIS REGISTRATION No. 062-057484
EXPIRATION DATE: 11/30/2011



ORION C. GALEY
ILLINOIS REGISTRATION No. 062-060829
EXPIRATION DATE: 11/30/2011



LOCATION OF SECTION INDICATED THUS: -

STATE OF ILLINOIS
DEPARTMENT OF TRANSPORTATION
DIVISION OF HIGHWAYS

APPROVED May 24 2011

VILLAGE MANAGER
VILLAGE OF ELMWOOD PARK

PASSED MAY 24 2011

DISTRICT 1 ENGINEER OF LOCAL ROADS AND STREETS

RELEASING FOR
BID BASED ON
LIMITED REVIEW

June 9, 2011

Diana M. O'Keefe
DEPUTY DIRECTOR OF HIGHWAYS
REGION ONE ENGINEER

ORION C. GALEY
062-060829
LICENSED
PROFESSIONAL
ENGINEER
OF
ILLINOIS

ORION C. GALEY
ILLINOIS REGISTRATION No. 062-060829
EXPIRATION DATE: 11/30/2011

PRINTED BY THE AUTHORITY OF THE STATE OF ILLINOIS

GENERAL NOTES

1. ANY EXISTING OR PROPOSED STORM SEWER DAMAGED BY THE CONTRACTOR DURING CONSTRUCTION SHALL BE REPLACED BY THE CONTRACTOR AT NO ADDITIONAL COST.
2. ALL DOMESTIC METER VAULTS AND DOMESTIC WATER SERVICE BOXES SHALL BE ADJUSTED TO THE PROPOSED GRADE AS DIRECTED BY THE ENGINEER. THIS WORK SHALL BE PAID FOR AS DOMESTIC WATER SERVICE BOXES TO BE ADJUSTED.
3. EXPOSED SUBGRADE MUST BE COVERED WITHIN 24 HOURS OF EXCAVATION. UNSTABLE SUBGRADE AREAS, AS DETERMINED BY THE ENGINEER, RESULTING FROM THE CONTRACTOR'S FAILURE TO COVER THE SUBGRADE SHALL BE EXCAVATED AND BACKFILLED WITH POROUS GRANULAR EMBANKMENT, SUBGRADE AT NO ADDITIONAL COST.
4. THE CONTRACTOR SHALL BE RESPONSIBLE FOR CONTACTING THE OWNERS OF ALL EXISTING UTILITY FACILITIES SO THAT THE UTILITIES AND THEIR APPURTENANCES MAY BE LOCATED AND/OR ADJUSTED, IF NECESSARY, PRIOR TO THE START OF CONSTRUCTION OPERATIONS.
5. THE LOCATIONS OF EXISTING DRAINAGE STRUCTURES, STORM AND SANITARY SEWERS, WATER SERVICE LINES AND OTHER UTILITY LINES ARE APPROXIMATE, AND THE VERTICAL LOCATIONS ARE TO BE DETERMINED IN THE FIELD BY THE CONTRACTOR AT HIS OWN EXPENSE.
6. THE CONTRACTOR SHALL BE RESPONSIBLE FOR THE PROTECTION OF ALL UNDERGROUND OR SURFACE UTILITIES EVEN THOUGH THEY MAY NOT BE SHOWN ON THE PLANS. ANY UTILITY THAT IS DAMAGED BY THE CONTRACTOR DURING CONSTRUCTION SHALL BE REPAIRED TO THE SATISFACTION OF THE ENGINEER, OR REPLACED. SUCH WORK WILL BE AT THE CONTRACTOR'S EXPENSE.
7. WHEN IT IS NECESSARY TO SHUT OFF A WATER MAIN, THE CONTRACTOR SHALL PROVIDE THE VILLAGE OF ELMWOOD PARK (TEL. 708-452-7300) A MINIMUM 48 HOUR ADVANCE NOTICE, AND THE CONTRACTOR WILL BE RESPONSIBLE FOR NOTIFYING ALL AFFECTED RESIDENTS AND BUSINESSES, THE VILLAGE OF ELMWOOD PARK WILL PROVIDE THE NECESSARY FORMS AND DETERMINE THE LIMITS OF AFFECTED AREAS.
8. THE CONTRACTOR SHALL NOT OPEN OR SHUT ANY WATER VALVES OR FIRE HYDRANTS. IF WATER IS NEEDED DURING CONSTRUCTION ACTIVITIES THE CONTRACTOR MUST CONTACT THE ELMWOOD PARK WATER DEPARTMENT AT (708) 452-3945.
9. BEFORE STARTING ANY EXCAVATION, THE CONTRACTOR SHALL CALL "J.U.L.I.E." AT 800-880-0102 FOR FIELD LOCATIONS OF BURIED ELECTRIC, TELEPHONE, CABLE AND GAS FACILITIES. THE VILLAGE OF ELMWOOD PARK PUBLIC WORKS DEPT. AT (708) 452-3945 FOR FIELD LOCATIONS OF BURIED WATER, SANITARY AND STORM FACILITIES (48-HOUR ADVANCE NOTIFICATION IS REQUIRED) AND MEADE ELECTRIC FOR FIELD LOCATIONS OF THE STATE'S ELECTRICAL FACILITIES AT 773-287-7600.
10. TOP-OF-FRAME ELEVATIONS SHOWN ON THE PLANS FOR DRAINAGE STRUCTURES IN THE CURB LINE ARE PROPOSED FLOW LINE ELEVATIONS.
11. DURING CONSTRUCTION OPERATIONS, WHENEVER ANY LOOSE MATERIAL IS DEPOSITED IN THE FLOW LINES OF DRAINAGE STRUCTURES SUCH THAT THE NATURAL FLOW OF WATER IS OBSTRUCTED, IT SHALL BE REMOVED AT THE CLOSE OF EACH WORKING DAY. AT THE CONCLUSION OF CONSTRUCTION, ALL DRAINAGE AND UTILITY STRUCTURES SHALL BE FREE OF DIRT AND DEBRIS.
12. ALL SEWER AND WATER SERVICES CROSSED BY NEW STORM SEWERS SHALL BE PROPERLY LOCATED AND PROTECTED DURING CONSTRUCTION. ANY DAMAGE DONE TO SAID SERVICES NOT CONSIDERED TO BE IN CONFLICT WITH THE PROPOSED CONSTRUCTION SHALL BE REPAIRED BY THE CONTRACTOR AT HIS OWN EXPENSE.
13. THE COST OF CONNECTING PROPOSED STRUCTURES AND THE FIRST 5 FEET OF ASSOCIATED PIPE TO THE EXISTING DRAINAGE SYSTEM SHALL BE CONSIDERED INCLUDED IN THE COST OF THE STRUCTURE.
14. THE ENDS OF EXISTING DRAINAGE LINES AND HOLES IN EXISTING MANHOLES WHICH ARE INT TO BE INCORPORATED INTO THE PROPOSED IMPROVEMENTS DESIGNATED BY THE ENGINEER SHALL BE SEALED WITH A PORTLAND CEMENT MORTAR TO THE SATISFACTION OF THE ENGINEER. COST OF THIS WORK SHALL BE INCLUDED IN THE COST OF THE CONTRACT.
15. THE CONTRACTOR SHALL CONFIRM ALL EXISTING STORM SEWER PIPE SIZES AND INVERTS PRIOR TO ORDERING STRUCTURES. ANY MODIFICATION OF STRUCTURES DUE TO THE FAILURE OF THE CONTRACTOR TO PERFORM THIS TASK SHALL BE AT THE CONTRACTOR'S EXPENSE AND MAY LEAD TO THE REJECTION OF THE STRUCTURE IN THE FIELD. PIPE TYPES INDICATED ON THESE PLANS AT THE STRUCTURE CALL-OUTS ARE THE EXISTING TYPES IDENTIFIED IN THE FIELD.
16. THE CONTRACTOR SHALL PROVIDE ACCESS TO ABUTTING PROPERTIES AT ALL TIMES DURING THE CONSTRUCTION OF THIS PROJECT EXCEPT FOR PERIODS OF SHORT DURATION AS APPROVED BY THE ENGINEER. THIS WORK SHALL BE INCLUDED IN THE COST OF THE CONTRACT.
17. IT SHALL BE THE CONTRACTOR'S RESPONSIBILITY TO VERIFY ALL DIMENSIONS AND CONDITIONS EXISTING IN THE FIELD PRIOR TO ORDERING MATERIALS AND BEGINNING CONSTRUCTION.
18. PAY ITEMS IN THE SUMMARY OF QUANTITIES HAVE BEEN ESTIMATED. IF, IN THE ENGINEER'S OPINION, THE WORK IS NOT REQUIRED, THE ITEM WILL BE DEDUCTED FROM THE CONTRACT AND NO ADDITIONAL COMPENSATION WILL BE ALLOWED.
19. ALL SAWCUTTING SHALL BE INCLUDED IN REMOVAL ITEMS AND SHALL BE PERFORMED PRIOR TO BEGINNING REMOVAL. ANY ITEMS OF WORK REMOVED PRIOR TO SAWCUTTING WILL NOT BE MEASURED FOR PAYMENT.
20. THE CONTRACTOR SHALL BE RESPONSIBLE FOR RE-ERECTING ANY SIGNS AND POSTS REMOVED DURING CONSTRUCTION. RELOCATION OF EXISTING SIGNS SHALL BE CONSIDERED INCLUDED IN THE CONTRACT. IF DURING CONSTRUCTION THE CONTRACTOR DAMAGES ANY EXISTING SIGNS, HE WILL REPLACE THE SIGN AT NO COST.
21. THE CONTRACTOR SHALL SAWCUT AND REMOVE ONLY THE NECESSARY AREA OF EXISTING PAVEMENT NEEDED TO INSTALL PROPOSED STORM SEWER. THIS AREA SHALL BE BACKFILLED TO EXISTING PAVEMENT GRADE USING TRENCH BACKFILL, SPECIAL.
22. THE CONTRACTOR SHALL BE RESPONSIBLE FOR NOTIFYING ALL RESIDENTS/BUSINESSES WITHIN THE PROJECT LIMITS AND THE VILLAGE OF ELMWOOD PARK PRIOR TO ANY ROAD CLOSURE.
23. ANY DEFECTS FOUND IN THE "NEW" CONCRETE CURB & GUTTER AS IDENTIFIED BY THE RESIDENT ENGINEER SHALL BE REMOVED AND REPLACED AT THE CONTRACTORS EXPENSE PRIOR TO PLACEMENT OF BITUMINOUS MATERIALS.
24. IT SHALL BE THE CONTRACTOR'S RESPONSIBILITY TO VERIFY THAT CURB IS DEPRESSED AS INDICATED ON THE PLANS. (SEE IDOT STANDARD 424001).
25. AT THE END OF EACH DAY, IT SHALL BE THE CONTRACTORS RESPONSIBILITY TO ASSURE THAT ALL STREETS ADJACENT TO THE PROJECT ARE FREE OF ALL CONSTRUCTION RELATED DEBRIS INCLUDING DIRT, STONE, NAILS ETC. THIS WORK SHALL BE DONE TO THE SATISFACTION OF THE ENGINEER.
26. THE CONTRACTOR SHALL COMPLETE ALL UTILITY WORK PRIOR TO PAVEMENT REMOVAL. THE CONTRACTOR SHALL ONLY REMOVE THE PORTION OF PAVEMENT NECESSARY TO INSTALL PROPOSED UTILITIES. PAVEMENT REMOVED FOR UTILITY WORK SHALL BE RESTORED AS INDICATED ON THE PLANS. ALL PAVEMENT REMOVED FOR UTILITY WORK MUST BE SAWCUT.

27. THE CONTRACTOR AND ENGINEER SHALL FIELD VERIFY ALL DRAINAGE STRUCTURES TO DETERMINE WHAT WORK IS REQUIRED AT EACH LOCATION.
28. THE CONTRACTOR AND ENGINEER SHALL FIELD VERIFY ALL THE EXISTING CONCRETE PAVEMENT AFTER THE EXISTING BITUMINOUS SURFACE IS REMOVED TO DETERMINE THE AREAS THAT PATCHING IS REQUIRED.
29. PAVEMENT MARKINGS TO BE FIELD LOCATED BY ENGINEER
30. REMOVAL OF ASPHALT ON CURB AND GUTTER SHALL BE INCLUDED IN CURB AND GUTTER REMOVAL.
31. CURB HEIGHTS SHOWN ON THE PLANS ARE ESTIMATED. CONTRACTOR SHALL LOWER THE CURB HEIGHT AS NECESSARY TO ACHIEVE POSITIVE DRAINAGE FROM THE FRONT OF WALK TO THE BACK OF CURB. NO CURB SHALL BE POURED LESS THAN 3 INCHES.
32. THE GENERAL CONTRACTOR IS REQUIRED TO HIRE AN ENVIRONMENTAL FIRM TO CONTINUOUSLY MONITOR FOR WORKERS SAFETY AND SOIL CONTAMINATION AT SEVERAL AREAS. SEE SPECIAL PROVISION AND SUPPLEMENTAL SPECIFICATIONS FOR DETAILS.

HIGHWAY STANDARDS

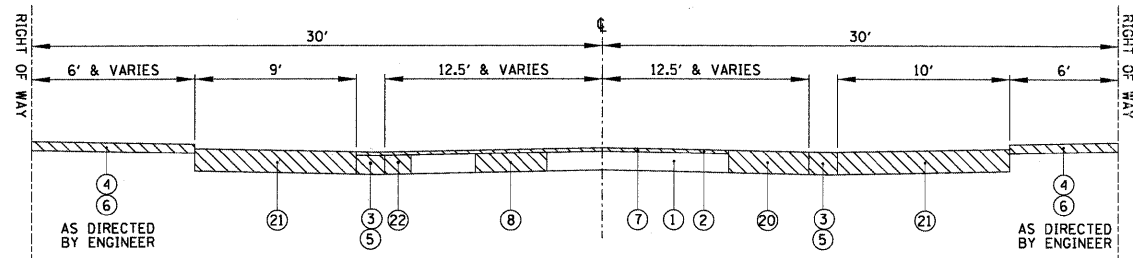
000001-06	STANDARD SYMBOLS, ABBREVIATIONS, AND PATTERNS
424001-05	CURB RAMPS FOR SIDEWALKS
442201-03	CLASS C AND D PATCHES
602301-03	INLET - TYPE A
604001-03	FRAMES AND LIDS TYPE 1
701801-04	LANE CLOSURE MULTI LANE 1 WAY OR 2 WAY
701901-01	TRAFFIC CONTROL DEVICES
780001-02	TYPICAL PAVEMENT MARKINGS

SUMMARY OF QUANTITIES

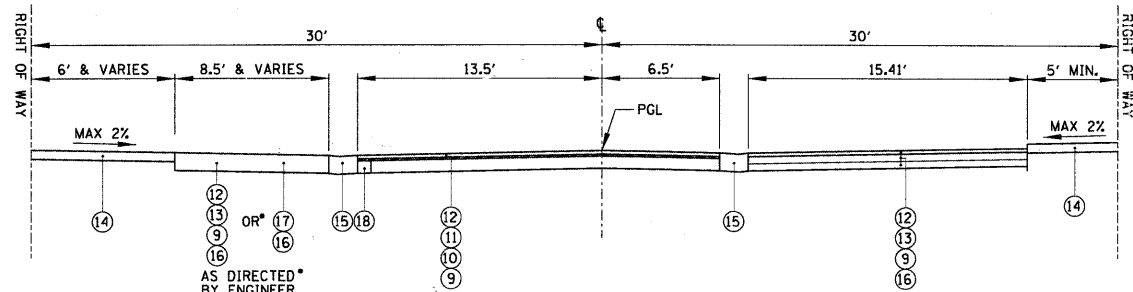
Item No.	Pay Item Description	Unit	Total Quantity	00 31	0031	0031	Non-Participatin
20201200	REMOVAL AND DISPOSAL OF UNSUITABLE MATERIAL	CU YD	10				10
21001000	GEOTECHNICAL FABRIC FOR GROUND STABILIZATION	SQ YD	30				30
28000510	INLET FILTERS	EACH	2	2			
31101400	SUBBASE GRANULAR MATERIAL, TYPE B, 6"	SQ YD	225				225
40600100	BITUMINOUS MATERIALS (PRIME COAT)	GALLON	105	55			50
40600300	AGGREGATE (PRIME COAT)	TON	2	1			1
40603080	HOT-MIX ASPHALT BINDER COURSE, IL 19.0, N50	TON	50				50
40603310	HOT-MIX ASPHALT SURFACE COURSE, MIX "C", N50	TON	45				45
40603340	HOT-MIX ASPHALT SURFACE COURSE, MIX "D", N70	TON	50	50			
42300400	PORTLAND CEMENT CONCRETE DRIVEWAY PAVEMENT, 8 INCH	SQ YD	105				105
42400200	PORTLAND CEMENT CONCRETE SIDEWALK, 5 INCH	SQ FT	4565	4310			255
42400800	DETECTABLE WARNINGS	SQ FT	80	48			32
44000100	PAVEMENT REMOVAL	SQ YD	325	195			130
44000157	HOT-MIX ASPHALT SURFACE REMOVAL, 2"	SQ YD	860	550			310
44000200	DRIVEWAY PAVEMENT REMOVAL	SQ YD	170				170
44000500	COMBINATION CURB AND GUTTER REMOVAL	FOOT	895	570			325
44000600	SIDEWALK REMOVAL	SQ FT	11395	11260			135
44201747	CLASS D PATCHES, TYPE IV, 8 INCH	SQ YD	45				45
550A0050	STORM SEWERS, CLASS A, TYPE 1, 12"	FOOT	16	16			
60234200	INLETS, TYPE A, TYPE 1 FRAME, OPEN LID	EACH	2	2			
60600605	CONCRETE CURB, TYPE B	FOOT	260			260	
*66900200	NON-SPECIAL WASTE DISPOSAL	CU YD	215	215			
*66900450	SPECIAL WASTE PLANS AND REPORTS	L. SUM	1	1			
*66900530	SOIL DISPOSAL ANALYSIS	EACH	4	4			
67100100	MOBILIZATION	L. SUM	1	1			
*78000200	THERMOPLASTIC PAVEMENT MARKING - LINE 4"	FOOT	240				240
*78000400	THERMOPLASTIC PAVEMENT MARKING - LINE 6"	FOOT	180	180			
*83600200	LIGHT POLE FOUNDATION, 24" DIAMETER	FOOT	78		78		
*81603090	Unit Duct, 600V, 3-1C No. 4, 1/C No. 6 Ground, (XLP-Type Use), 1 1/4" Dia. Polyethylene	FOOT	1300		1300		
*81900200	TRENCH BACKFILL FOR ELECTRICAL WORK	FOOT	750		750		
*84200500	REMOVAL OF LIGHT UNIT, SALVAGE	EACH	6		6		
*84200804	REMOVAL OF POLE FOUNDATION	EACH	6		6		
*80237345	TREE, PYRUS CALLERYANA CLEVELAND (CLEVELAND SELECT CALLERY PEAR), 2" CALIPHER, TREE FORM BALLED AND BURLAPPED	EACH	4			4	
*C2C040G3	SHRUB, ITEA VIRGINICA (VIRGINIA SWEETSPIRE)CONTAINER GROWN, 3-GALLON	EACH	8			8	
X4060826	POLYMERIZED LEVELING BINDER (MACHINE METHOD), IL-4.75, N50	TON	40	25			15
X4240430	PORTLAND CEMENT CONCRETE SIDEWALK 5 INCH, SPECIAL	SQ FT	7710			7710	
X6064200	COMBINATION CONCRETE CURB AND GUTTER, TYPE B-6.12 (SPECIAL)	FOOT	920	578			342
X7010216	TRAFFIC CONTROL AND PROTECTION (SPECIAL)	L. SUM	1	1			
XX000959	TRASH RECEPTACLES	EACH	4			4	
XX005425	LANDSCAPE BOLLARDS	EACH	4		4		
*XX006834	ELECTRICAL CONNECTION TO EXISTING LIGHTING SYSTEM	EACH	1		1		
*XX008367	DECORATIVE LIGHTING UNIT, TYPE "D1"	EACH	6		6		
*XX008368	DECORATIVE LIGHTING UNIT, TYPE "D2"	EACH	4		4		
Z0003850	BENCHES	EACH	8			8	
Z0013798	CONSTRUCTION LAYOUT	L. SUM	1	1			
Z0018100	DRAINAGE STRUCTURE ADJUSTMENT (SPECIAL)	EACH	20	15			5
*Z0033026	MAINTAINENCE OF EXISTING LIGHTING SYSTEM, COMPLETE	L. SUM	1		1		
Z0042002	POROUS GRANULAR EMBANKMENT, SUBGRADE	CU YD	10				10

*SPECIALTY ITEMS

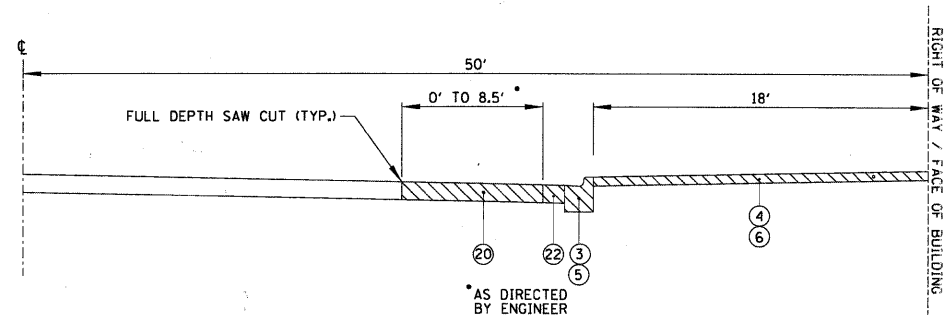
FILE NAME =	USER NAME = ESIDORCZ	DESIGNED -	REVISED -	STATE OF ILLINOIS DEPARTMENT OF TRANSPORTATION	GENERAL NOTES, IDOT STANDARDS & SUMMARY OF QUANTITIES	F.A.U. RTE.	SECTION	COUNTY	TOTAL SHEETS	SHEET NO.
N:\ELMWOODPARK\950253.00004\Civil\NOT_950253.SHT		DRAWN -	REVISED -			1374	10-00112-00-LS	COOK	23	2
PLOT SCALE = 20'		CHECKED -	REVISED -			CONTRACT NO. 63608				
PLOT DATE = 6/2/2011		DATE -	REVISED -			ILLINOIS FED. AID PROJECT				
				SCALE:	SHEET NO.	OF	SHEETS	STA.	TO STA.	



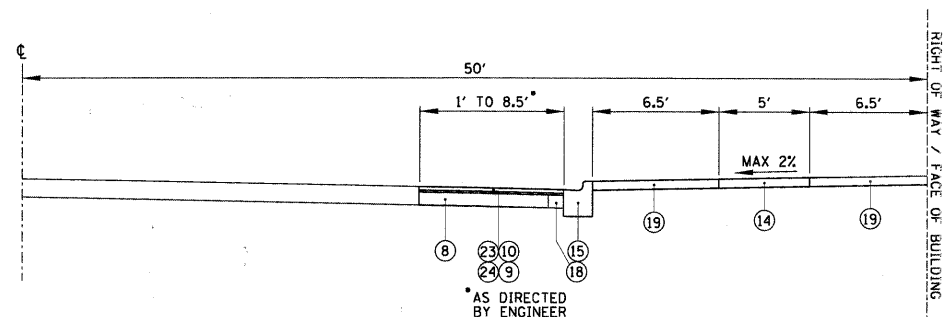
EXISTING TYPICAL SECTION & REMOVAL ITEMS
77TH CT (ALLEY TO BELMONT)
STA. 30+37.03 TO STA. 31+93.28



PROPOSED TYPICAL SECTION
77TH CT (ALLEY TO BELMONT)
STA. 30+37.03 TO STA. 31+93.28



EXISTING TYPICAL SECTION & REMOVAL ITEMS
BELMONT AVENUE (77TH COURT TO 76TH COURT)
STA. 10+20.31 TO STA. 17+53.42



PROPOSED TYPICAL SECTION
BELMONT AVENUE (77TH COURT TO 76TH COURT)
STA. 10+20.31 TO STA. 17+53.42

HOT-MIX ASPHALT MIXTURE REQUIREMENTS

ITEM	VOIDS
PARTIAL RECONSTRUCTION & RESURFACING	
HOT-MIX ASPHALT SURFACE COURSE, MIX "C", N50 (1 1/2") (IL-9.5 MM)	4% @ 50 GYR
HOT-MIX ASPHALT SURFACE COURSE, MIX "D", N70 (1 1/2") (IL-9.5 MM)	4% @ 70 GYR
POLYMERIZED LEVELING BINDER (MACHINE METHOD), IL-4.75, N50 (3/4" AND VARIES)	4% @ 50 GYR
DRIVEWAY REPLACEMENT	
HOT-MIX ASPHALT SURFACE COURSE, MIX "C", N50 (1 1/2") (IL-9.5 MM)	4% @ 50 GYR
HOT-MIX ASPHALT BINDER COURSE, IL-19.0, N50 (4 1/2") (IN 2 LIFTS)	4% @ 50 GYR
PAVEMENT PATCHING	
CLASS D PATCHING, 8" (HMA BINDER IL-19 MM) (IN 3 LIFTS)	4% @ 70 GYR

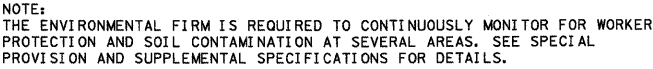
NOTE:

1. THE UNIT WEIGHT USED TO CALCULATE ALL HOT-MIX ASPHALT SURFACE MIXTURES IS 112 LBS/SO YD/IN.
2. THE "AC TYPE" FOR POLYMERIZED HMA MIXES SHALL BE "SBS /SBR PG 70-22" AND FOR NON-POLYMERIZED HMA THE "AC TYPE" SHALL BE "PG 64-22" UNLESS MODIFIED BY DISTRICT ONE SPECIAL PROVISIONS. FOR "PERCENT OF RAP" SEE DISTRICT ONE SPECIAL PROVISIONS.

LEGEND

/// ITEMS TO BE REMOVED

- ① EXISTING PORTLAND CEMENT CONCRETE BASE COURSE, 8"
- ② EXISTING BITUMINOUS BINDER AND SURFACE COURSE
- ③ EXISTING COMBINATION CONCRETE CURB AND GUTTER
- ④ EXISTING PORTLAND CEMENT CONCRETE SIDEWALK
- ⑤ COMBINATION CURB AND GUTTER REMOVAL
- ⑥ SIDEWALK REMOVAL
- ⑦ HOT-MIX ASPHALT SURFACE REMOVAL, 2"
- ⑧ CLASS D PATCHES, TYPE IV, 8 INCH
- ⑨ BITUMINOUS MATERIALS (PRIME COAT)
- ⑩ AGGREGATE (PRIME COAT)
- ⑪ POLYMERIZED LEVELING BINDER (MACHINE METHOD), IL- 4.75, N50 (3/4")
- ⑫ HOT-MIX ASPHALT SURFACE COURSE, MIX "C", N50 - 1.5"
- ⑬ HOT-MIX ASPHALT BINDER COURSE, IL 19.0, N50 - 4.5"
- ⑭ PORTLAND CEMENT CONCRETE SIDEWALK, 5 INCH
- ⑮ COMBINATION CONCRETE CURB AND GUTTER, TYPE B-6.12 (MODIFIED) - (SPECIAL)
- ⑯ SUBBASE GRANULAR MATERIAL, TYPE B, 6"
- ⑰ PORTLAND CEMENT CONCRETE DRIVEWAY PAVEMENT, 8"
- ⑱ PORTLAND CEMENT CONCRETE BASE COURSE, 8" (INCIDENTAL TO CURB AND GUTTER)
- ⑲ PORTLAND CEMENT CONCRETE SIDEWALK, 5 INCH, SPECIAL
- ⑳ PAVEMENT REMOVAL
- ㉑ DRIVEWAY PAVEMENT REMOVAL
- ㉒ PORTLAND CEMENT CONCRETE BASE COURSE REMOVAL (INCIDENTAL)
- ㉓ POLYMERIZED LEVELING BINDER (MACHINE METHOD), IL-4.75, N50 (3/4")
- ㉔ HOT-MIX ASPHALT SURFACE COURSE, MIX "D", N70 (1 1/2")

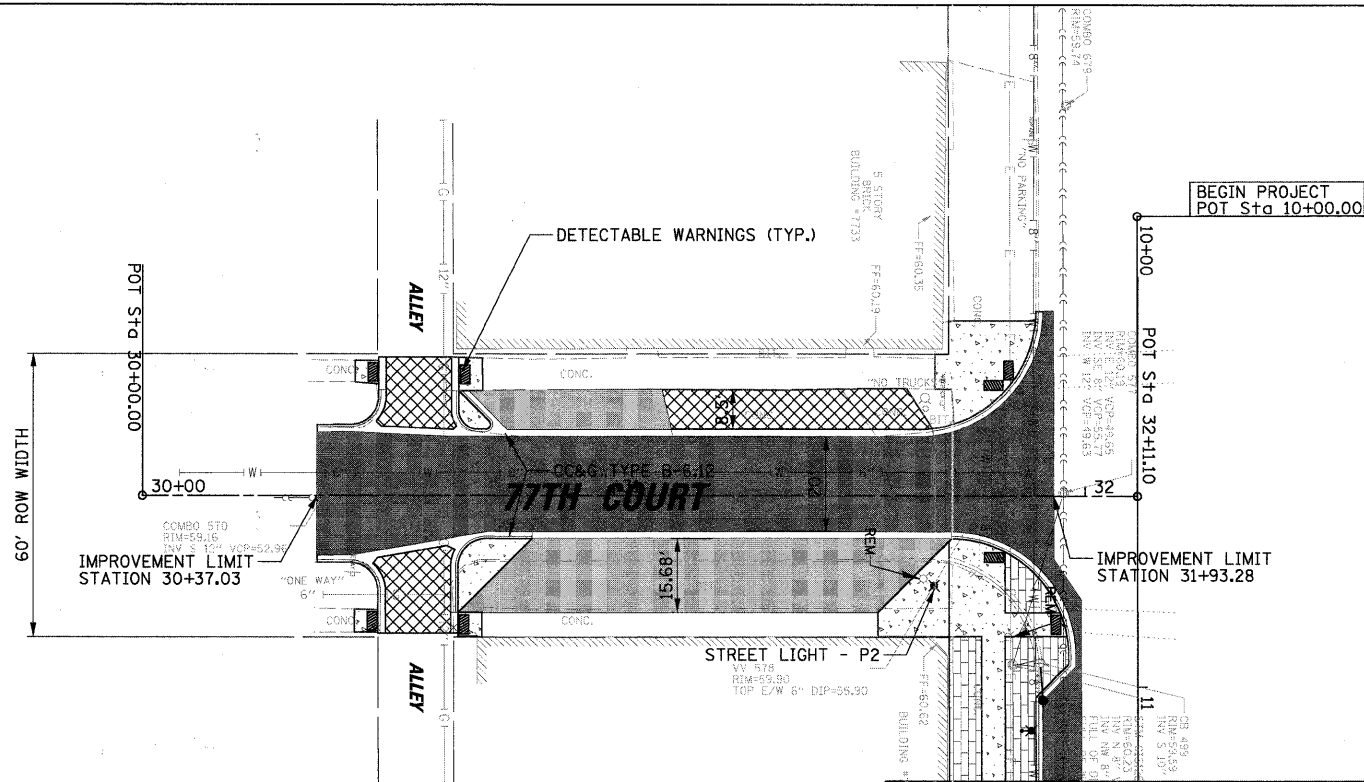


FILE NAME =	USER NAME = ESIGORCZ	DESIGNED -	REVISED -	STATE OF ILLINOIS DEPARTMENT OF TRANSPORTATION	EXISTING CONDITIONS AND REMOVAL PLAN				F.A.U. RTE.	SECTION	COUNTY	TOTAL SHEETS	SHEET NO.
N:\ELWOODPARK\950253.00\04\Civil\REM-950253.SHT	DRAWN -	REVISED -			1374	10-00112-00-LS	COOK	23	5				
PLOT SCALE = 20'	CHECKED -	REVISED -			CONTRACT NO. 63608								
PLOT DATE = 6/2/2011	DATE -	REVISED -			SCALE:	SHEET NO.	OF	SHEETS	STA.	TO STA.	ILLINOIS FED. AID PROJECT		

PLAN	SURVEYED	BY	DATE
	ALIGNED		
	NOTED		
	NO.		

PROFILE	SURVEYED	BY	DATE
	GRADES CHECKED		
	BLM. NOTED		
	NO.		

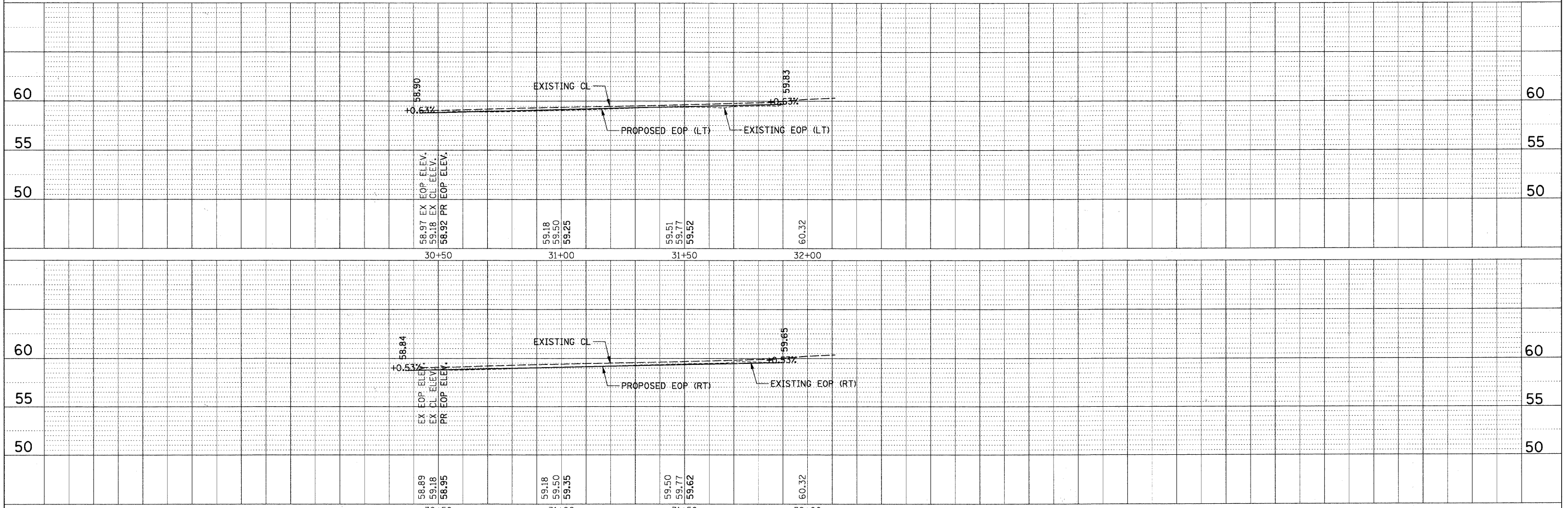
NOTE:
THE ENVIRONMENTAL FIRM IS REQUIRED TO CONTINUOUSLY MONITOR FOR WORKER PROTECTION AND SOIL CONTAMINATION AT SEVERAL AREAS. SEE SPECIAL PROVISION AND SUPPLEMENTAL SPECIFICATIONS FOR DETAILS.



SEE BELMONT RPP SHEET 07

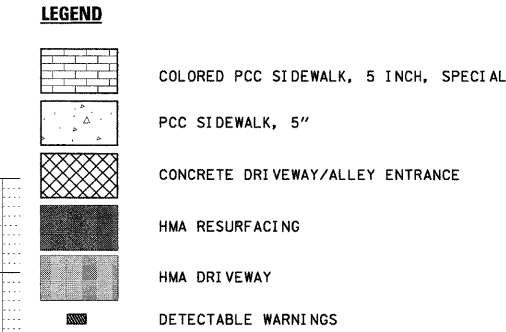
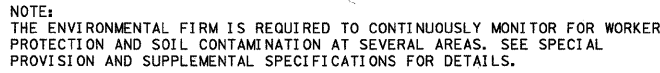
LEGEND

- COLORED PCC SIDEWALK, 5 INCH, SPECIAL
- PCC SIDEWALK, 5"
- CONCRETE DRIVEWAY/ALLEY ENTRANCE
- HMA RESURFACING
- HMA DRIVEWAY
- DETECTABLE WARNINGS



FILE NAME -	USER NAME - ESIDORCZ	DESIGNED -	REVISED -	77TH COURT		F.A.U. RTE.	SECTION	COUNTY	TOTAL SHEETS	SHEET NO.
NAELMWOODPARK\950253.00004\CL\1\RPP.777	ALSHIT	CHECKED -	REVISED -	STA. 30+00 TO STA. 32+11.10		1374	10-00112-00-LS	COOK	23	6
PLOT SCALE = 20'		DRAWN -	REVISED -	SCALE: SHEET NO. OF SHEETS STA. TO STA.		CONTRACT NO. 63608				
PLOT DATE = 6/2/2011		CHECKED -	REVISED -			ILLINOIS FED. AID PROJECT				

PROFILE	SURVEYED	6Y	DATE
	PLOTTED		
NOTE BOOK	GRADES CHECKED		
NO.	B.M. NOTED		
	STRUCTURE NOTAT'NS CHK'D		

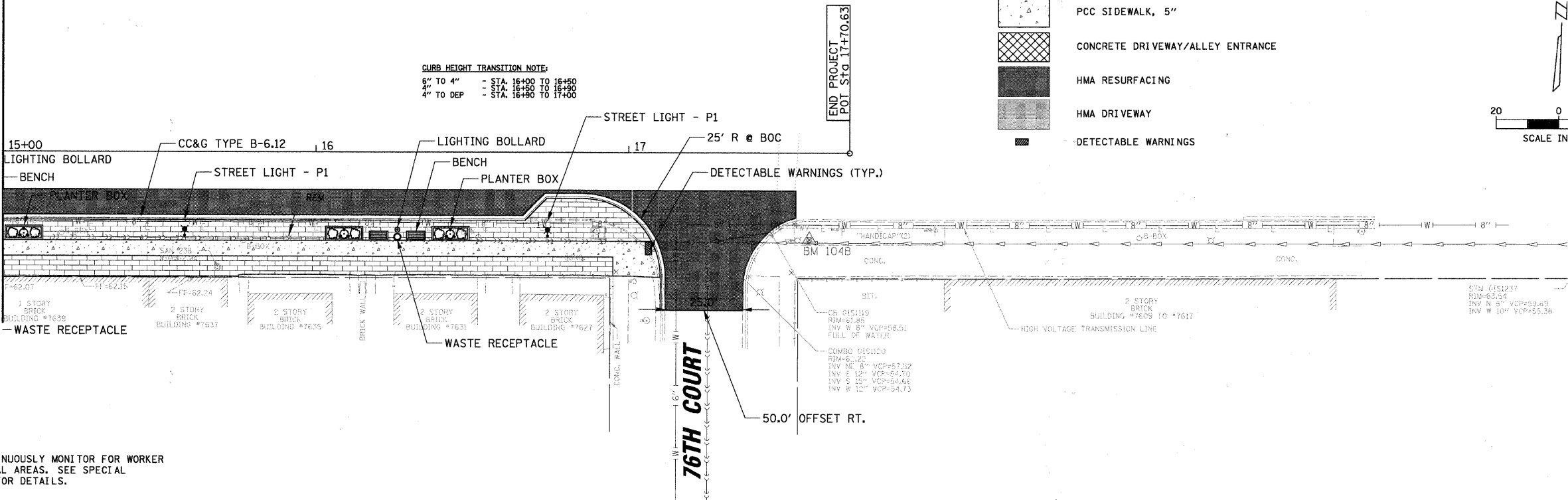


FILE NAME =	USER NAME = ESIDORCZ	DESIGNED -	REVISED -	<div style="text-align: center;"> STATE OF ILLINOIS DEPARTMENT OF TRANSPORTATION </div>	<div style="text-align: center;"> BELMONT AVENUE STA. 10+00 TO STA. 15+00 </div>				F.A.U. R.T.E.	SECTION	COUNTY	TOTAL SHEETS	SHEET NO.
N:\ELMWOODPARK\950253.00\04\Civil\RPP-BELMONT_01.SHT	MONT_01.SHT	DRAWN -	REVISED -						1374	10-00112-00-LS	COOK	23	7
PLOT SCALE = 20'	CHECKED -	REVISED -	<div style="text-align: center;"> CONTRACT NO. 63608 </div>										
PLOT DATE = 6/2/2011	DATE -	REVISED -											
				SCALE:	SHEET NO.	OF	SHEETS	STA.	TO	STA.			

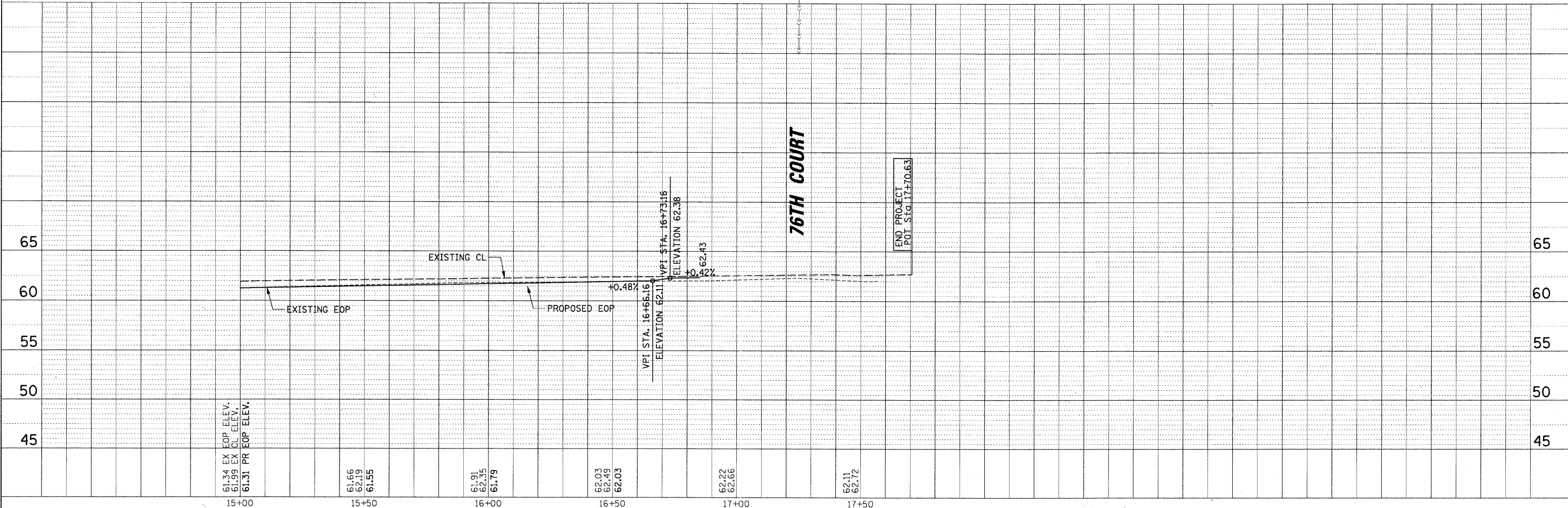
PLAN	SURVEYED	BY	DATE
NO.	NO.		
NOTE BOOK	ALIGNED		
	RT. OF WAY CHECKED		
	PAID FILE NAME		

PROFILE	SURVEYED	BY	DATE
NO.	NO.		
NOTE BOOK	GRADES CHECKED		
	B.M. NOTED		
	STRUCTURE NOTATIONS CHND		

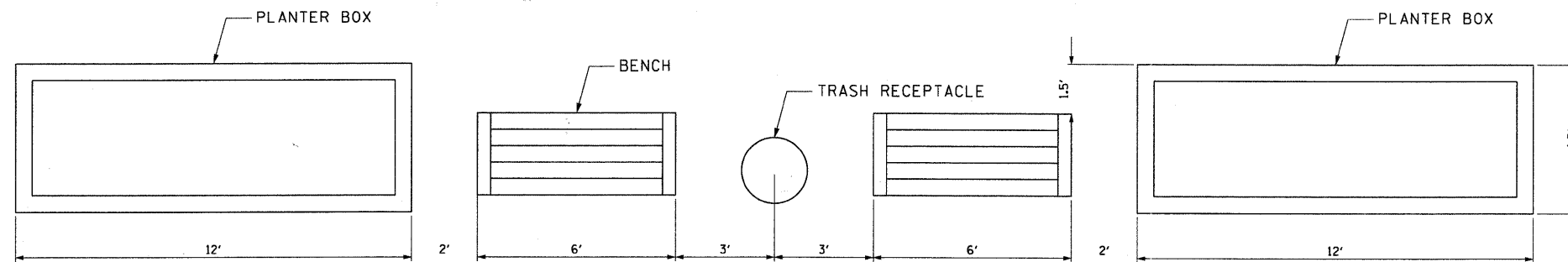
MATCH LINE STA. 15+00



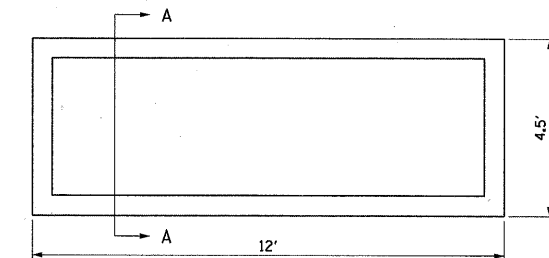
NOTE:
THE ENVIRONMENTAL FIRM IS REQUIRED TO CONTINUOUSLY MONITOR FOR WORKER PROTECTION AND SOIL CONTAMINATION AT SEVERAL AREAS. SEE SPECIAL PROVISION AND SUPPLEMENTAL SPECIFICATIONS FOR DETAILS.



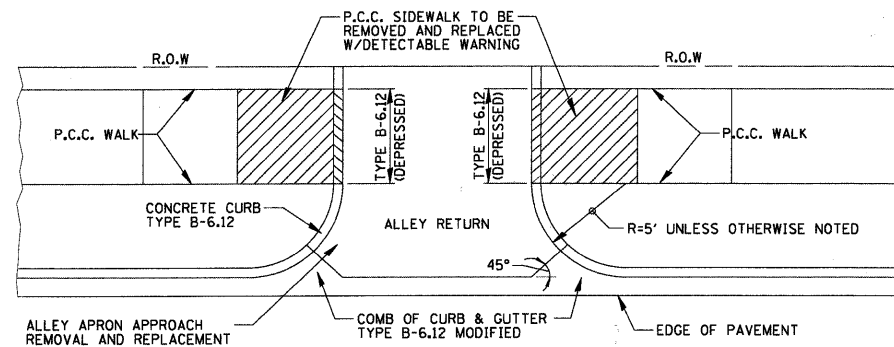
FILE NAME =	USER NAME = ES10RCZ	DESIGNED -	REVISED -	STATE OF ILLINOIS DEPARTMENT OF TRANSPORTATION	BELMONT AVENUE STA. 15 + 00 TO STA. 17 + 70.63	F.A.U. RTE.	SECTION	COUNTY	TOTAL SHEETS	SHEET NO.	CONTRACT NO. 63608
N:\ELMWOODPARK\950253.00004\Civil\NPP.BELMONT_02.SHT	DRAWN -	REVISED -	REVISED -			1374	10-00112-00-LS	COOK	23	8	
PLOT SCALE = 28'	CHECKED -	REVISED -	REVISED -								
PLOT DATE = 6/2/2011	DATE -	REVISED -	REVISED -								
				SCALE:	SHEET NO.	OF	SHEETS	STA.	TO STA.		ILLINOIS FED. AID PROJECT



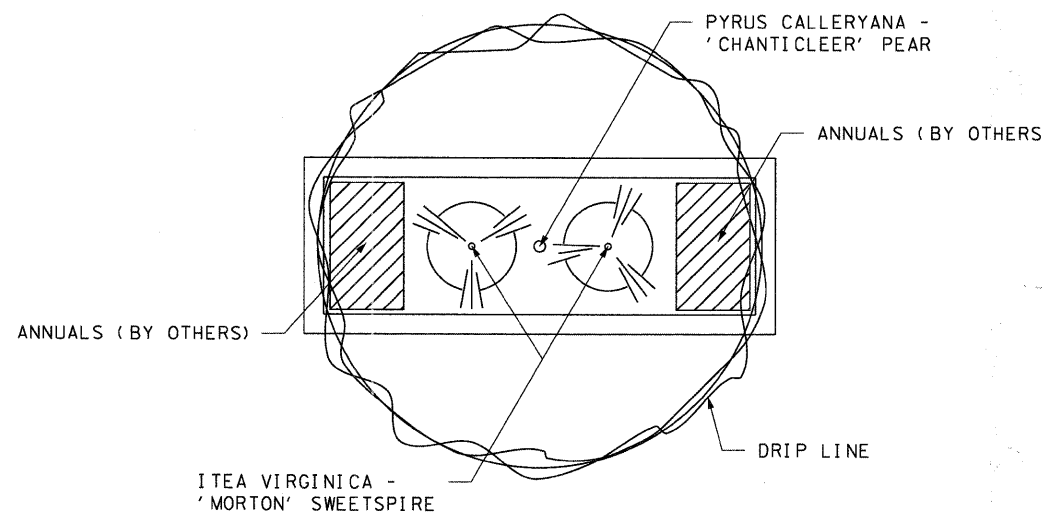
SPACING DETAIL
BELMONT AVENUE PARKWAY



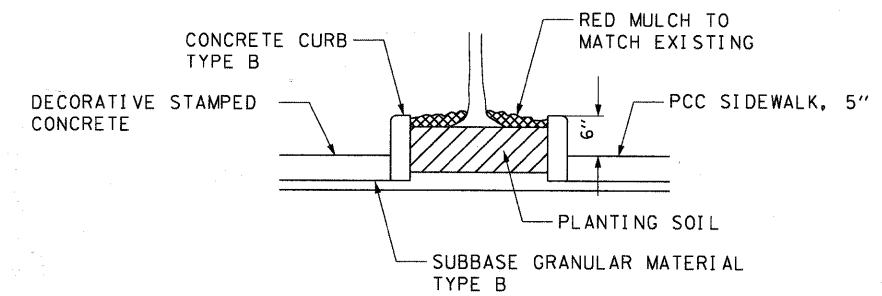
PLANTER BOX



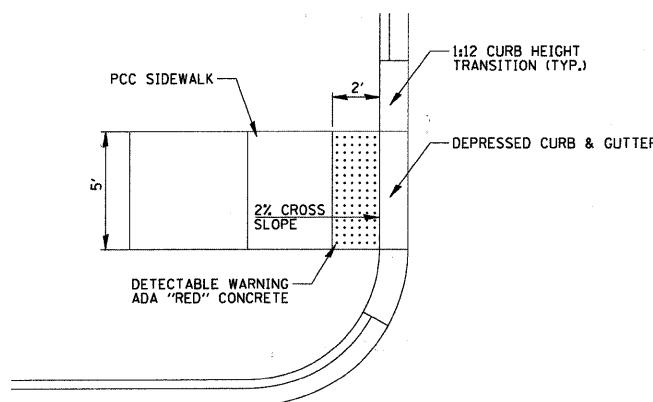
TYPICAL ALLEY RETURN
N.T.S.



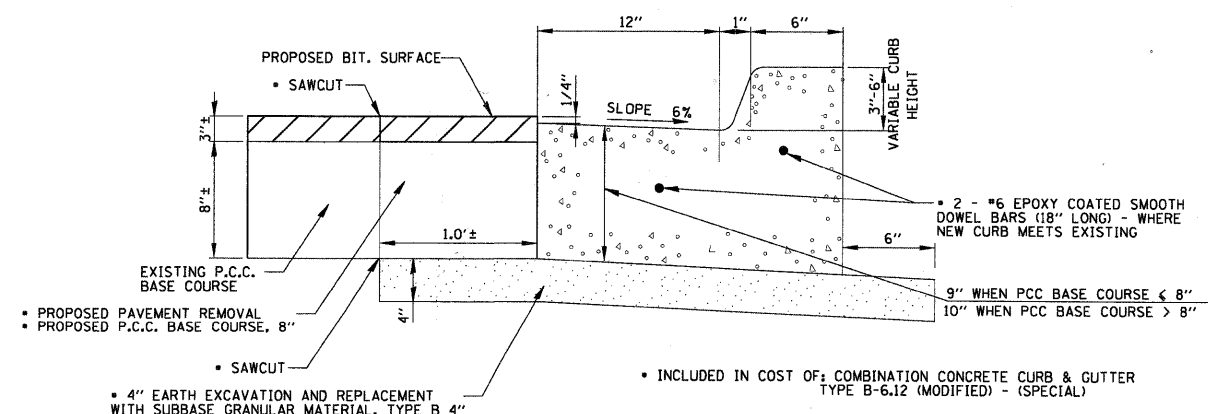
PLANTINGS



SECTION A-A



DETECTABLE WARNING DETAIL
N.T.S.



COMBINATION CONCRETE CURB & GUTTER, TYPE B-6.12 - (SPECIAL)
N.T.S.

FILE NAME =	USER NAME = ESIDORCZ	DESIGNED -	REVISED -	STATE OF ILLINOIS DEPARTMENT OF TRANSPORTATION	CONSTRUCTION DETAILS				F.A.U. RTE.	SECTION	COUNTY	TOTAL SHEETS	SHEET NO.
NAME/LOCATION/PROJECT/DATE/SCALE/PLANT DATE	1374	10-00112-00-LS	COOK		23	1374	10-00112-00-LS	COOK	23	9			
DATE	DATE	DATE	DATE		CONTRACT NO. 63608								
DATE	DATE	DATE	DATE		ILLINOIS FED. AID PROJECT								

LIGHTING GENERAL NOTES

1. ELECTRICAL CONTRACTOR SHALL BE RESPONSIBLE FOR OBTAINING A PERMIT FROM THE VILLAGE OF ELMWOOD PARK BEFORE THE START OF WORK, ANY COST FOR PERMIT SHALL BE INCIDENTAL.
2. THE EXACT LOCATIONS OF ALL UTILITIES SHALL BE VERIFIED BY THE CONTRACTOR BEFORE THE INSTALLATION OF ANY COMPONENTS OF THE LIGHTING SYSTEM. FOR THE LOCATIONS OF THE UTILITIES, CALL JULIE TOLL FREE AT (800) 892-0123.
3. BEFORE INSTALLING LIGHT STANDARDS NEAR OVERHEAD AND UNDERGROUND ELECTRIC UTILITIES SHALL CALL COM ED FOR LOCATION APPROVAL AND MINIMUM CLEARANCE REQUIREMENTS.
4. THE WORK PERFORMED UNDER THIS CONTRACT SHALL IN NO WAY INTERFERE WITH THE NORMAL OPERATION OF ANY EXISTING UTILITY SERVICE. THE CONTRACTOR SHALL FURNISH ALL NECESSARY ITEMS OF EQUIPMENT REQUIRED TO MAINTAIN SUCH NORMAL OPERATION AT NO ADDITIONAL COST TO THE OWNER. THE COST ASSOCIATED FOR THIS WORK SHALL BE CONSIDERED INCIDENTAL TO THE COST OF THE CONTRACT, AND NO ADDITIONAL COMPENSATION SHALL BE AWARDED.
5. ALL REMOVAL OR EXCAVATION ITEMS BEING DISPOSED OF AT AN UNCONTAMINATED SOIL FILL OPERATION OR CLEAN CONSTRUCTION AND DEMOLITION DEBRIS (CCDD) FILL SITE SHALL MEET THE REQUIREMENTS OF PUBLIC ACT 96-1416. ALL COSTS ASSOCIATED WITH MEETING THESE REQUIREMENTS SHALL BE INCLUDED IN THE UNIT PRICE COST FOR THE ASSOCIATED REMOVAL OR EXCAVATION ITEMS IN THE CONTRACT. THESE COSTS SHALL INCLUDE BUT ARE NOT LIMITED TO ALL REQUIRED TESTING, LAB ANALYSIS, CERTIFICATION BY A LICENSED PROFESSIONAL ENGINEER, AND STATE AND LOCAL TIPPING FEE.
6. ALL DISTURBED AREAS WHERE RESTORATION IS NOT COVERED BY APPLICABLE SECTIONS OF THE SPECIAL PROVISIONS MUST BE RESTORED TO THE SATISFACTION OF THE ENGINEER. THE WORK WILL BE CONSIDERED INCIDENTAL TO THE CONTRACT. SEPARATE PAYMENT WILL NOT BE MADE.
7. THE CONTRACTOR SHALL BE SOLELY RESPONSIBLE FOR JOB SITE SAFETY AS WELL AS SUPERVISION/ DIRECTION AND MEANS/METHODS OF CONSTRUCTION.
8. ALL WORK SHALL BE IN ACCORDANCE WITH THE LATEST EDITION OF THE FOLLOWING SPECIFICATIONS, WHICH ARE HEREBY MADE A PART HEREOF:

A. "STANDARD SPECIFICATIONS FOR ROAD AND BRIDGE CONSTRUCTION", AS PREPARED BY IDOT.

B. "THE NATIONAL ELECTRICAL CODE".

C. MUNICIPAL CODES & STANDARDS.
9. NO MATERIALS SHALL BE DELIVERED TO THE JOB SITE UNTIL ALL PERTINENT EQUIPMENT SUBMITTALS HAVE BEEN REVIEWED BY THE ENGINEER.
10. ALL TREE TRIMMING REQUIRED, OR AS DIRECTED BY THE ENGINEER, SHALL BE PERFORMED BY THE CONTRACTOR, AND SHALL BE INCIDENTAL TO THE COST OF THE LIGHT POLE.
11. CAST A GROUND ROD INSIDE EVERY CONCRETE POLE FOUNDATION AND CONNECT TO THE POLE GROUNDING LUG VIA A #6 SOLID COPPER WIRE WITH A MECHANICAL CONNECTION AT THE GROUND ROD AND PIGTAIL SPLICE INSIDE THE POLE HANDHOLE.
12. THE INSTALLATION OF BURIED WARNING TAPE, SPECIFIED AS PART OF "TRENCH AND BACKFILL FOR ELECTRICAL WORK", SHALL BE REVIEWED BY THE ENGINEER PRIOR TO BACKFILLING OR DURING PLOWING OPERATIONS, AS APPLICABLE.
13. THE CONTRACTOR SHALL LABEL ALL WIRES WITH WIRE MARKERS INDICATING THE CIRCUIT ID IN EVERY CONTROLLER, POLE BASE, HAND HOLE AND SPLICE/CONNECTION POINT. WIRE MARKERS SHALL BE MECHANICALLY FASTENED WHITE PLASTIC, TYPE "PLM" AS MANUFACTURED BY PANDUIT OR APPROVED EQUAL.
14. UNIT DUCT SHALL BE 1/4" DIAMETER SCH 40 HDPE WITH 2-1/C #4, 1/C #4 NEUTRAL & 1/C #6 GROUND XLP-TYPE USE CABLES, INSTALLED IN TRENCH, OR AS INDICATED ON THE PLANS.
15. LUMINAIRES SHALL BE LEVEL & HAVE A TIGHT FIT ON MAST ARMS TO THE ENGINEER'S SATISFACTION. THIS WORK SHALL INCLUDE FIELD ADJUSTING OF THE LUMINAIRE WHICH WILL BE INCIDENTAL TO THE COST OF THE CONTRACT.
16. NO POLES SHALL BE ERECTED UNTIL THE RESPECTIVE FOUNDATIONS HAVE CURED, (IF APPLICABLE) AND HAVE BEEN REVIEWED BY THE ENGINEER.
17. TO MAINTAIN THE STRUCTURAL INTEGRITY OF LIGHT POLES WITH MAST ARMS, THEY SHALL NOT BE ERECTED AND LEFT TO STAND WITHOUT LUMINAIRES.
18. ALL POLE HANDHOLES SHALL FACE AWAY FROM TRAFFIC.
19. THE CONTRACTOR SHALL BE RESPONSIBLE FOR THE ESTABLISHMENT OF THE TOP OF FOUNDATION ELEVATION WITH THE FINISHED GRADE.
20. EQUIPMENT GROUND CONDUCTORS SHALL BE SPLICED AND BONDED AT EACH LIGHT POLE OR OTHER PIECE OF EQUIPMENT.
21. IT SHALL BE THE CONTRACTOR'S RESPONSIBILITY TO MARK THE PROPOSED LOCATIONS OF ALL LIGHT POLES FOR EXAMINATION AND CONFIRMATION WITH THE ENGINEER. ALL UTILITIES SHALL BE LOCATED PRIOR TO MARKING PROPOSED LOCATIONS.
22. THE ELECTRICAL CONTRACTOR SHALL FURNISH TWO SETS OF FULL SIZE RECORD DRAWINGS TO THE ENGINEER UPON COMPLETION OF THE LIGHTING AND ELECTRICAL IMPROVEMENTS. THE DRAWINGS SHALL SHOW THE INSTALLED LOCATIONS OF ALL LIGHT POLES, UNDERGROUND CONDUITS/WIRING, HANDHOLES, JUNCTION BOXES & CONTROLLER CABINETS. THE DRAWINGS WILL BE REVIEWED BY THE ENGINEER.
23. PRIOR TO PERFORMING ANY ELECTRICAL WORK, OR TRANSFERING THE MAINTENANCE OF THE EXISTING LIGHTING SYSTEM, THE CONTRACTOR SHALL PERFORM, AND RECORD, ELECTRICAL TESTING OF THE EXISTING LIGHTING SYSTEM. ELECTRICAL TESTING SHALL BE PERFORMED IN THE PRESENCE OF THE ENGINEER, AND IN ACCORDANCE WITH ARTICLE 801.13 OF THE STANDARD SPECIFICATIONS FOR ROAD AND BRIDGE CONSTRUCTION. THE CONTRACTOR SHALL BE REQUIRED TO PERFORM FULL MAINTENANCE OF THE EXISTING LIGHTING SYSTEMS (REFER TO THE SPECIAL PROVISIONS FOR A DESCRIPTION OF THIS WORK).
24. UPON COMPLETION OF THE PROPOSED LIGHTING IMPROVEMENTS, THE CONTRACTOR SHALL AGAIN PERFORM ELECTRICAL TESTING AND VERIFY THAT THE INSTALLTION COMPLIES WITH THE LATEST EDITION OF THE STANDARD SPECIFICATIONS FOR ROAD AND BRIDGE CONSTRUCTION IN ILLINOIS.

LIGHTING BILL OF MATERIALS

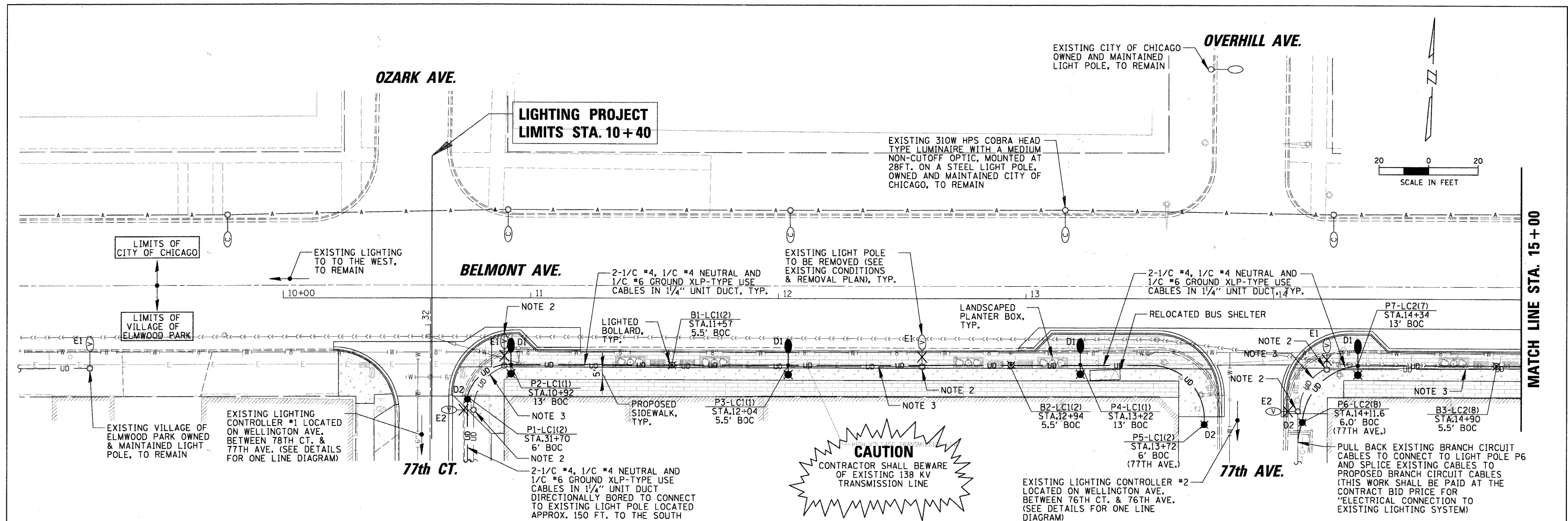
DESCRIPTION	UNIT	QUANTITY
UNIT DUCT, 600V, 3-1C NO.4, 1/C NO.6 GROUND, (XLP-TYPE USE), IN 1/4" DIA. POLYETHYLENE	FOOT	900
UNIT DUCT, 600V, 3-1C NO.4, 1/C NO.6 GROUND, (XLP-TYPE USE), IN 1/4" DIA. POLYETHYLENE, BORED AND PULLED	FOOT	400
TRENCH AND BACKFILL FOR ELECTRICAL WORK	FOOT	750
LIGHT POLE FOUNDATION, 24" DIAMETER	FOOT	78
REMOVAL OF LIGHT UNIT, SALVAGE	EACH	6
REMOVAL OF POLE FOUNDATION	EACH	6
LANDSCAPE BOLLARDS	EACH	4
ELECTRICAL CONNECTION TO EXISTING LIGHTING SYSTEM	EACH	1
DECORATIVE LIGHTING UNIT, TYPE "D1"	EACH	6
DECORATIVE LIGHTING UNIT, TYPE "D2"	EACH	4
MAINTENANCE OF EXISTING LIGHTING SYSTEM COMPLETE	LSUM	1

ABBREVIATIONS

RGS RIDGID GALVANIZED STEEL

CAUTION
NOTICE TO CONTRACTOR

THE CONTRACTOR IS SPECIFICALLY CAUTIONED THE LOCATION AND/OR ELEVATION OF EXISTING AND PROPOSED UTILITIES AS SHOWN ON THESE PLANS. THE INFORMATION IS NOT TO BE RELIED ON AS BEING EXACT OR COMPLETE. THE CONTRACTOR MUST CALL THE LOCAL UTILITY LOCATION CENTER AT LEAST 72 HOURS BEFORE ANY EXCAVATION TO REQUEST EXACT FIELD LOCATIONS OF THE UTILITIES. IT SHALL BE THE RESPONSIBILITY OF THE CONTRACTOR TO INFORM ENGINEER OF ANY EXISTING UTILITIES WHICH CONFLICT WITH THE PROPOSED IMPROVEMENTS.

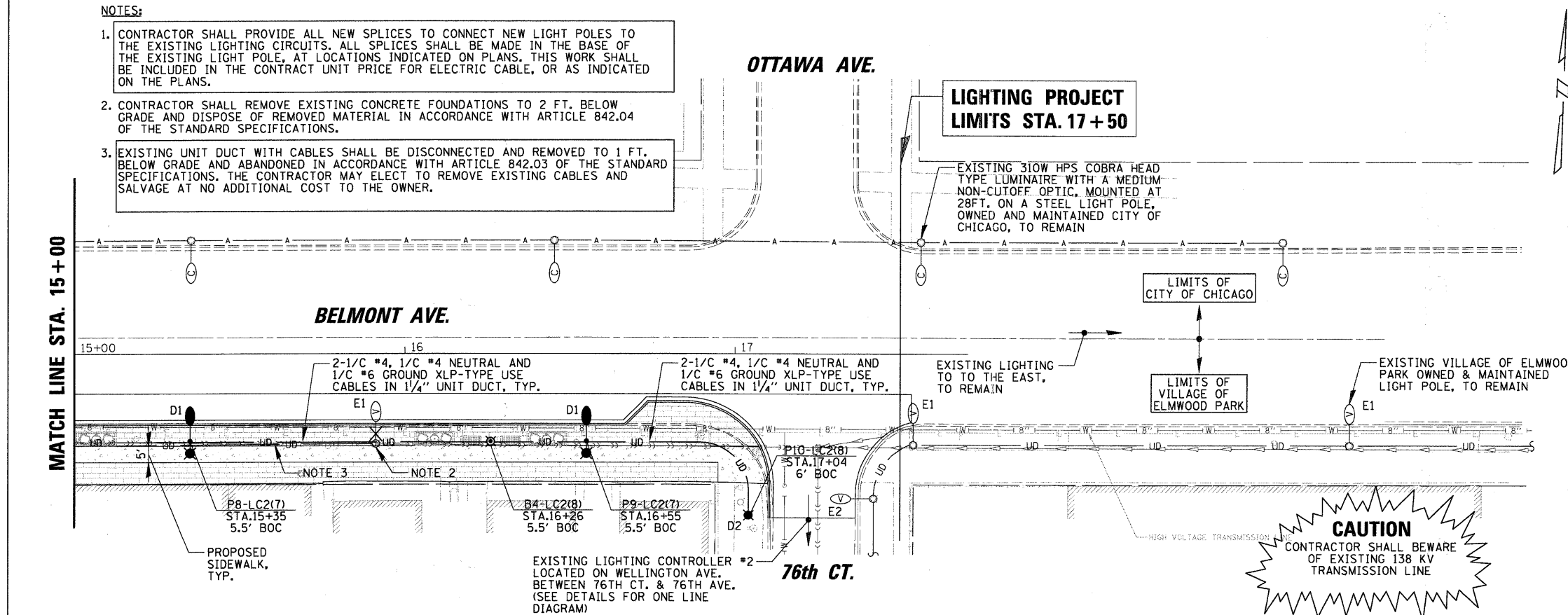


NOTES:

1. CONTRACTOR SHALL PROVIDE ALL NEW SPLICES TO CONNECT NEW LIGHT POLES TO THE EXISTING LIGHTING CIRCUITS. ALL SPLICES SHALL BE MADE IN THE BASE OF THE EXISTING LIGHT POLE, AT LOCATIONS INDICATED ON PLANS. THIS WORK SHALL BE INCLUDED IN THE CONTRACT UNIT PRICE FOR ELECTRIC CABLE, OR AS INDICATED ON THE PLANS.
2. CONTRACTOR SHALL REMOVE EXISTING CONCRETE FOUNDATIONS TO 2 FT. BELOW GRADE AND DISPOSE OF REMOVED MATERIAL IN ACCORDANCE WITH ARTICLE 842.04 OF THE STANDARD SPECIFICATIONS.
3. EXISTING UNIT DUCT WITH CABLES SHALL BE DISCONNECTED AND REMOVED TO 1 FT. BELOW GRADE AND ABANDONED IN ACCORDANCE WITH ARTICLE 842.03 OF THE STANDARD SPECIFICATIONS. THE CONTRACTOR MAY ELECT TO REMOVE EXISTING CABLES AND SALVAGE AT NO ADDITIONAL COST TO THE OWNER.

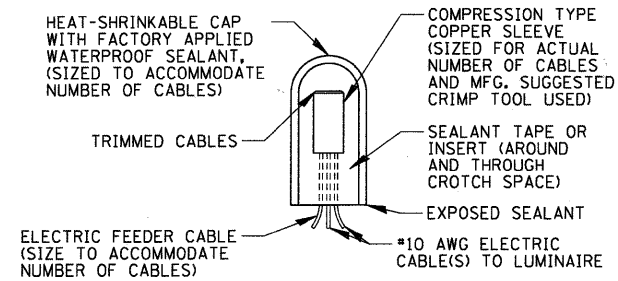
LIGHTING LEGEND

- D1 PROPOSED 250W HIGH PRESSURE SODIUM (HPS) ROADWAY LUMINAIRE WITH MC2 OPTICS MOUNTED AT 35 FT AND A 70W HPS PEDESTRIAN LUMINAIRE MOUNTED AT 16 FT ON A SPUN ALUMINUM LIGHT POLE
- D2 PROPOSED 150W HIGH PRESSURE SODIUM (HPS) ACORN TYPE LUMINAIRE WITH SC5 OPTICS MOUNTED ON A 14 FT FLUTED ORNAMENTAL LIGHT POLE
- E1 EXISTING VILLAGE OF ELMWOOD PARK 250W HPS COBRA HEAD TYPE LUMINAIRE MOUNTED AT 35 FT. ON A SPUN ALUMINUM LIGHT POLE, WITH AN 8 FT MAST ARM, TO REMAIN
- E2 EXISTING VILLAGE OF ELMWOOD PARK 250W HPS COBRA HEAD TYPE LUMINAIRE MOUNTED AT 25 FT. ON A SPUN ALUMINUM LIGHT POLE, WITH AN 15 FT MAST ARM, TO REMAIN
- EXISTING CITY OF CHICAGO 310W HPS COBRA HEAD TYPE LUMINAIRE WITH A MEDIUM NON-CUTOFF OPTIC, MOUNTED AT 28 FT. ON A STEEL LIGHT POLE, WITH AN 8 FT. MAST ARM, TO REMAIN
- EXISTING LIGHT POLE TO BE REMOVED
- UD PROPOSED 2-1/C #4, 1/C #4 NEUTRAL & 1/C #6 GROUND XLP-TYPE USE CABLES IN 1 1/4" UNIT DUCT, INSTALLED IN TRENCH, UNLESS OTHERWISE INDICATED ON THE PLANS
- EXISTING 2-1/C #4, 1/C #4 NEUTRAL & 1/C #6 GROUND XLP-TYPE USE CABLES IN 1 1/4" UNIT DUCT
- PI-LC1(2) LIGHT POLE IDENTIFIER
- EXISTING LIGHTING CONTROLLER IDENTIFIER
- EXISTING BRANCH CIRCUIT IDENTIFIER
- EXISTING LIGHTING CONTROLLER #2
- EXISTING LIGHT POLE STATION
- EXISTING LIGHT POLE SETBACK FROM BACK OF CURB (BOC) TO CENTER OF LIGHT POLE



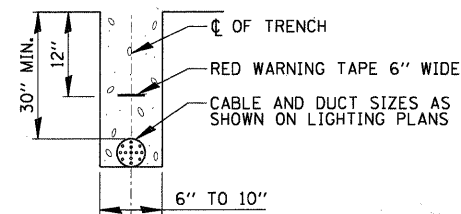
FILE NAME =	USER NAME = ESIDORCZ	DESIGNED KB	REVISED -	STATE OF ILLINOIS DEPARTMENT OF TRANSPORTATION	LIGHTING PLAN				F.A.U. RTE.	SECTION	COUNTY	TOTAL SHEETS	SHEET NO.
N:\ELMWOOD PARK\950253.000\4\Mech\LG.T_950253.02.SHT		DRAWN KB	REVISED -		1374	10-00112-00-LS	COOK	23	11				
PLOT SCALE = 20'		CHECKED AJD	REVISED -		CONTRACT NO. 63608								
PLOT DATE = 5/24/2011		DATE -	REVISED -		SCALE: AS SHOWN	SHEET NO. OF	SHEETS	STA.	TO STA.	ILLINOIS FED. AID PROJECT			

FILE NAME =	USER NAME = KBALLADO	DESIGNED KB	REVISED -	STATE OF ILLINOIS DEPARTMENT OF TRANSPORTATION	N.T.S.				LIGHTING DETAILS				F.A.U. RTE.	SECTION	COUNTY	TOTAL SHEETS	SHEET NO.
N:\ELMWOODPARK\950253.00\04\Mech\LDT_950253.04.SHT		DRAWN KB	REVISED -		1374	10-00112-00-LS	COOK	23	13								
PLOT SCALE = 20'		CHECKED AJD	REVISED -						CONTRACT NO. 63608								
PLOT DATE = 6/13/2011		DATE -	REVISED -		SCALE: N.T.S.				SHEET NO.	OF	SHEETS	STA.	TO STA.	ILLINOIS FED. AID PROJECT			



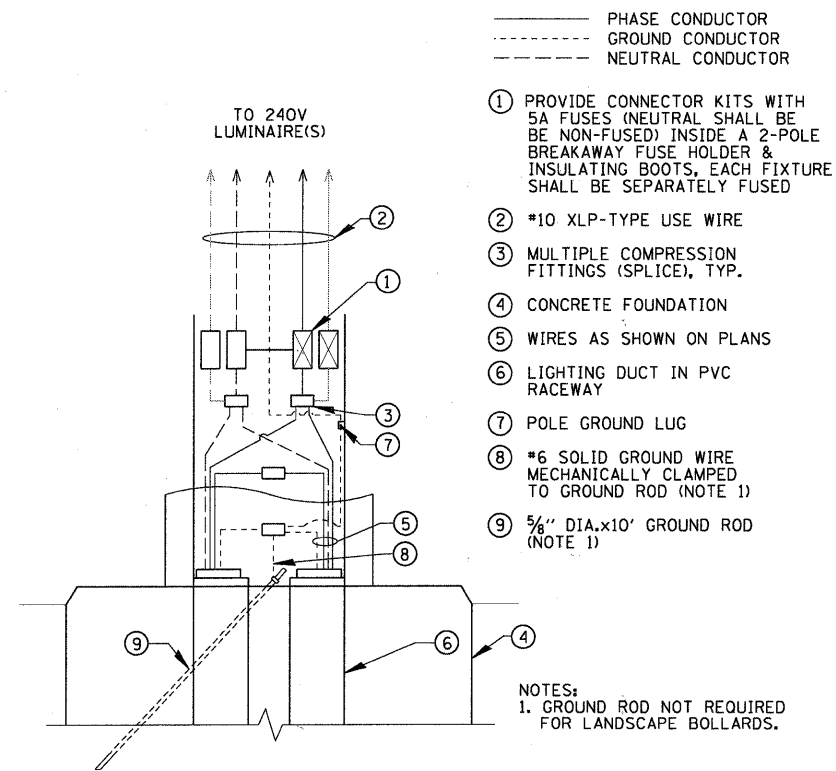
SPlicing ELECTRIC CABLE

N.T.S.



ELECTRIC CONDUIT INSTALLATION

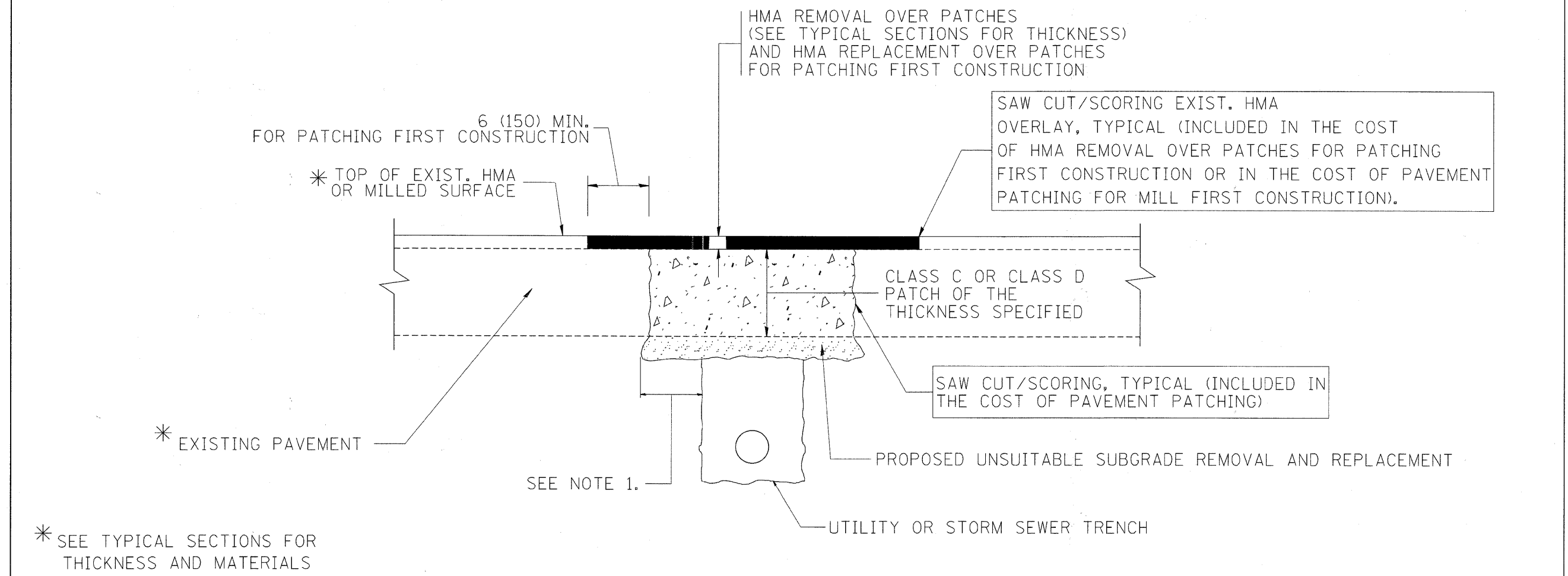
N.T.S.



POLE/BOLLARD HANDHOLE WIRING DIAGRAM

N.T.S.

FILE NAME =	USER NAME = ESIDRCZ	DESIGNED KB	REVISED -	STATE OF ILLINOIS DEPARTMENT OF TRANSPORTATION	LIGHTING DETAILS					F.A.U. RTE.	SECTION	COUNTY	TOTAL SHEETS	SHEET NO.
N:\ELMWOODPARK\952253.00024\Mech\LD.T	60253.05.SHT	DRAWN KB	REVISED -		1374	10-00112-00-LS		COOK	23	14				
PLOT SCALE = 20'		CHECKED AJD	REVISED -		CONTRACT NO. 63608									
PLOT DATE = 5/24/2011		DATE -	REVISED -		ILLINOIS FED. AID PROJECT									
SCALE: N.T.S.					SHEET NO.	OF	SHEETS	STA.	TO STA.					



* SEE TYPICAL SECTIONS FOR THICKNESS AND MATERIALS

NOTES:

1. THE WIDTH OF THE FULL DEPTH PATCH OVER A TRENCH SHALL BE 12 (300) WIDER ON EACH SIDE OF THE TRENCH.
2. FOR METHOD OF MEASUREMENT AND BASIS OF PAYMENT, SEE RECURRING SPECIAL PROVISION "PATCHING WITH HOT-MIX ASPHALT OVERLAY REMOVAL".

SEQUENCE OF CONSTRUCTION (PATCHING FIRST)

1. REMOVE THE EXISTING HMA MATERIAL OVER THE AREA TO BE PATCHED.
2. REMOVE AND REPLACE WITH CLASS C OR D PATCH.
3. REPLACE HMA MATERIAL OVER THE AREA TO BE PATCHED.

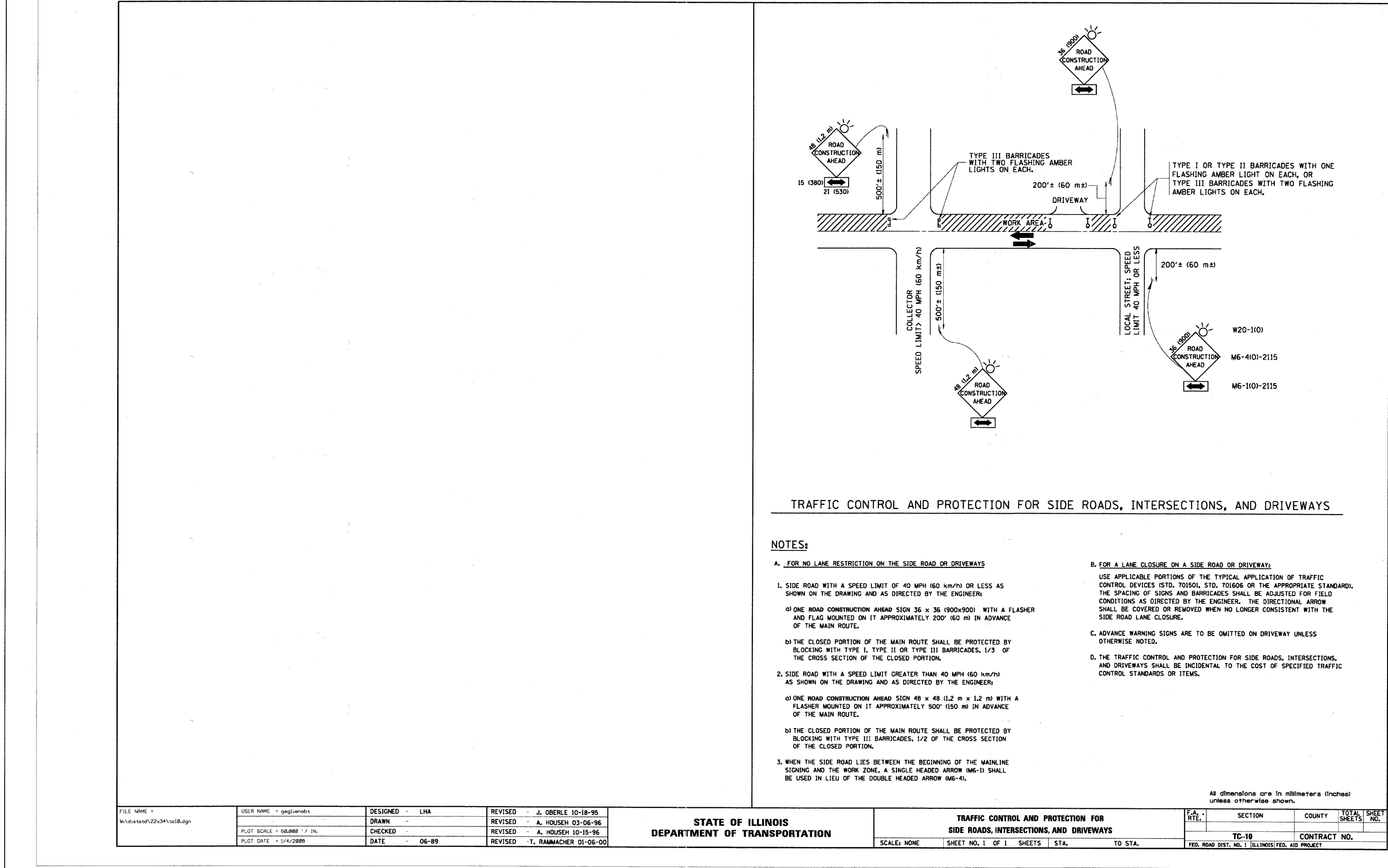
SEQUENCE OF CONSTRUCTION (MILLING FIRST)

1. MILL HMA FIRST IF THERE IS AT LEAST 4 1/2 INCHES OR MORE OF HMA MATERIAL ON TOP OF THE EXISTING PAVEMENT OR IF THE PAVEMENT IS FULL DEPTH HMA. A MINIMUM OF 2 INCHES OF HMA MATERIAL SHALL BE IN PLACE AFTER MILLING.
2. REMOVE AND REPLACE WITH FULL DEPTH CLASS D PATCHES TO TOP OF MILLED SURFACE.

ALL DIMENSIONS ARE IN INCHES (MILLIMETERS) UNLESS OTHERWISE SHOWN.

FILE NAME = c:\projects\diststd22x34\bd22.dgn	USER NAME = bauerdl	DESIGNED - R. SHAH	REVISED - A. ABBAS 04-27-98	STATE OF ILLINOIS DEPARTMENT OF TRANSPORTATION	PAVEMENT PATCHING FOR HMA SURFACED PAVEMENT	F.A. RTE.	SECTION	COUNTY	TOTAL SHEETS	SHEET NO.
		DRAWN -	REVISED - R. BORO 01-01-07							
	PLOT SCALE = 50.000' / IN.	CHECKED -	REVISED - R. BORO 09-04-07							
	PLOT DATE = 10/27/2008	DATE - 10-25-94	REVISED - K. ENG 10-27-08							
SCALE: NONE						SHEET NO. 1 OF 1 SHEETS		STA.		TO STA.
						BD400-04 (BD-22)		CONTRACT NO.		
						FED. ROAD DIST. NO. 1 ILLINOIS FED. AID PROJECT				

FILE NAME = NA\ELMWOODPARK\950253.00004\Civil\DET_950253.02.SHT	USER NAME = ESIDORCZ	DESIGNED -	REVISED -	STATE OF ILLINOIS DEPARTMENT OF TRANSPORTATION	DISTRICT ONE DETAILS	SCALE:	SHEET NO.	OF	SHEETS	STA.	TO STA.	F.A.U. RTE.	SECTION	COUNTY	TOTAL SHEETS	SHEET NO.
		DRAWN -	REVISED -									1374	10-00112-00-LS	COOK	23	15
	PLOT SCALE = 20'	CHECKED -	REVISED -									CONTRACT NO. 63608				
	PLOT DATE = 5/24/2011	DATE -	REVISED -									ILLINOIS FED. AID PROJECT				



TRAFFIC CONTROL AND PROTECTION FOR SIDE ROADS, INTERSECTIONS, AND DRIVEWAYS

NOTES:

A. FOR NO LANE RESTRICTION ON THE SIDE ROAD OR DRIVEWAYS

- SIDE ROAD WITH A SPEED LIMIT OF 40 MPH (60 km/h) OR LESS AS SHOWN ON THE DRAWING AND AS DIRECTED BY THE ENGINEER:
 - ONE ROAD CONSTRUCTION AHEAD SIGN 36 x 36 (900x900) WITH A FLASHER AND FLAG MOUNTED ON IT APPROXIMATELY 200' (60 m) IN ADVANCE OF THE MAIN ROUTE.
 - THE CLOSED PORTION OF THE MAIN ROUTE SHALL BE PROTECTED BY BLOCKING WITH TYPE I, TYPE II OR TYPE III BARRICADES, 1/3 OF THE CROSS SECTION OF THE CLOSED PORTION.
- SIDE ROAD WITH A SPEED LIMIT GREATER THAN 40 MPH (60 km/h) AS SHOWN ON THE DRAWING AND AS DIRECTED BY THE ENGINEER:
 - ONE ROAD CONSTRUCTION AHEAD SIGN 48 x 48 (1.2 m x 1.2 m) WITH A FLASHER MOUNTED ON IT APPROXIMATELY 500' (150 m) IN ADVANCE OF THE MAIN ROUTE.
 - THE CLOSED PORTION OF THE MAIN ROUTE SHALL BE PROTECTED BY BLOCKING WITH TYPE III BARRICADES, 1/2 OF THE CROSS SECTION OF THE CLOSED PORTION.
- WHEN THE SIDE ROAD LIES BETWEEN THE BEGINNING OF THE MAINLINE SIGNING AND THE WORK ZONE, A SINGLE HEADED ARROW (M6-1) SHALL BE USED IN LIEU OF THE DOUBLE HEADED ARROW (M6-4).

B. FOR A LANE CLOSURE ON A SIDE ROAD OR DRIVEWAY:

USE APPLICABLE PORTIONS OF THE TYPICAL APPLICATION OF TRAFFIC CONTROL DEVICES (STD. 701501, STD. 701606 OR THE APPROPRIATE STANDARD). THE SPACING OF SIGNS AND BARRICADES SHALL BE ADJUSTED FOR FIELD CONDITIONS AS DIRECTED BY THE ENGINEER. THE DIRECTIONAL ARROW SHALL BE COVERED OR REMOVED WHEN NO LONGER CONSISTENT WITH THE SIDE ROAD LANE CLOSURE.

C. ADVANCE WARNING SIGNS ARE TO BE OMITTED ON DRIVEWAY UNLESS OTHERWISE NOTED.

D. THE TRAFFIC CONTROL AND PROTECTION FOR SIDE ROADS, INTERSECTIONS, AND DRIVEWAYS SHALL BE INCIDENTAL TO THE COST OF SPECIFIED TRAFFIC CONTROL STANDARDS OR ITEMS.

All dimensions are in millimeters (inches) unless otherwise shown.

FILE NAME = N:\ELMWOODPARK\950253.00004\civ\1\DET.950253.03.SHT	USER NAME = gaglienobt	DESIGNED - LHA	REVISED - J. OBERLE 10-18-95
		DRAWN -	REVISED - A. HOUSEH 03-06-96
	PLOT SCALE = 50.000' / IN.	CHECKED -	REVISED - A. HOUSEH 10-15-96
	PLOT DATE = 1/4/2000	DATE - 06-89	REVISED - T. RAMMACHER 01-06-00

STATE OF ILLINOIS
DEPARTMENT OF TRANSPORTATION

TRAFFIC CONTROL AND PROTECTION FOR
SIDE ROADS, INTERSECTIONS, AND DRIVEWAYS

SCALE: NONE SHEET NO. 1 OF 1 SHEETS STA. TO STA.

F.A.U. RTE.	SECTION	COUNTY	TOTAL SHEETS	SHEET NO.
	TC-10			

FILE NAME = N:\ELMWOODPARK\950253.00004\civ\1\DET.950253.03.SHT	USER NAME = ESIDORCZ	DESIGNED -	REVISED -
		DRAWN -	REVISED -
	PLOT SCALE = 20'	CHECKED -	REVISED -
	PLOT DATE = 5/24/2011	DATE -	REVISED -

STATE OF ILLINOIS
DEPARTMENT OF TRANSPORTATION

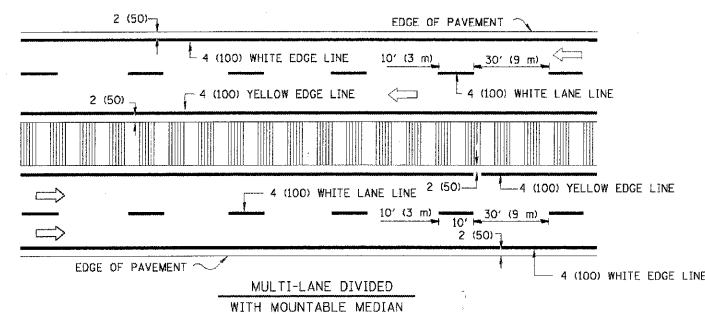
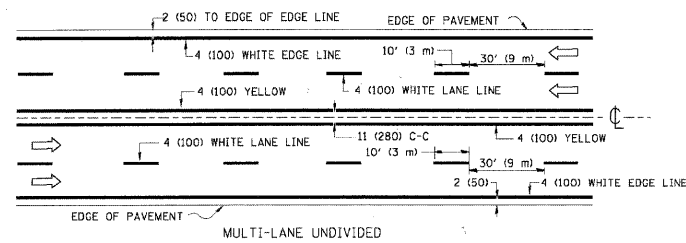
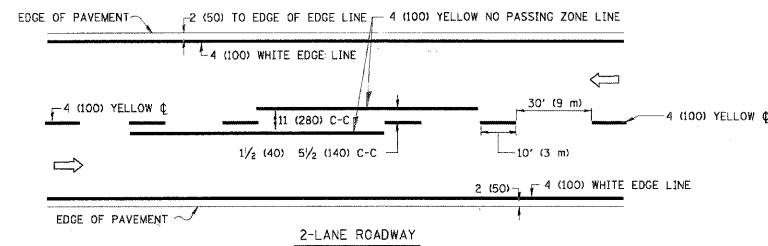
DISTRICT ONE DETAILS

SCALE: SHEET NO. OF SHEETS STA. TO STA.

F.A.U. RTE.	SECTION	COUNTY	TOTAL SHEETS	SHEET NO.
1374	10-00112-00-LS	COOK	23	16

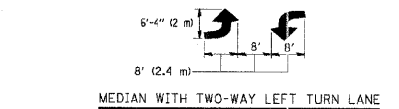
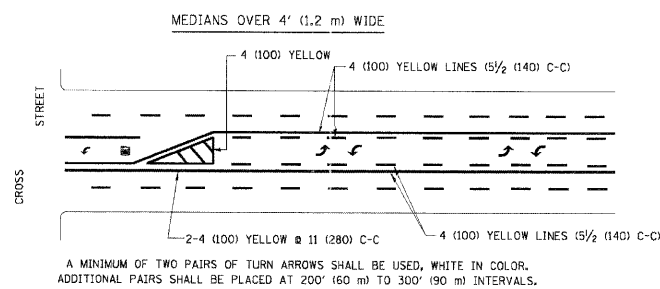
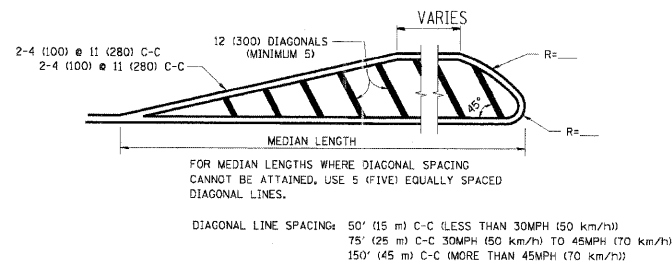
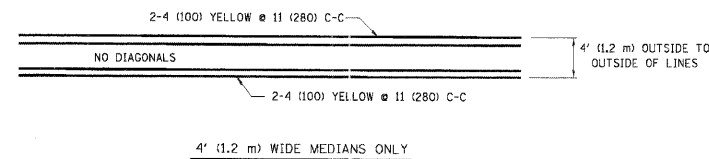
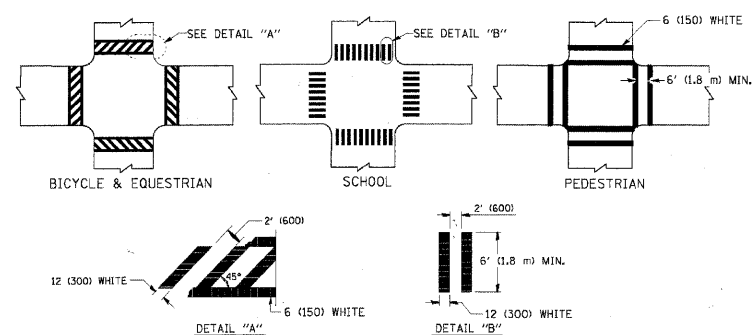
CONTRACT NO. 63608

ILLINOIS FED. AID PROJECT

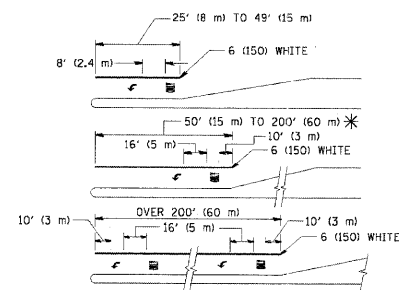


NOTE: MEDIANS WITH BARRIER CURB DO NOT REQUIRE AN EDGE LINE

TYPICAL LANE AND EDGE LINE MARKING

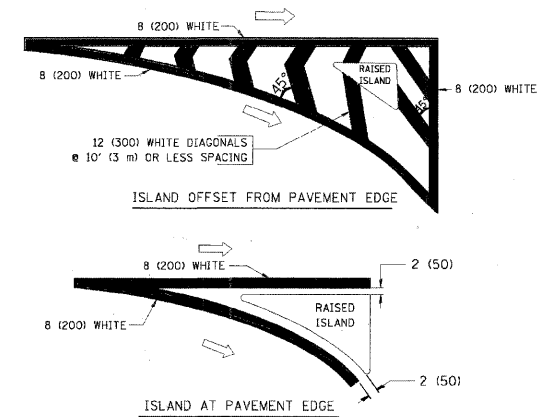


TYPICAL PAINTED MEDIAN MARKING



FULL SIZE LETTERS 8" (2.4 m) AND ARROWS SHALL BE USED.
 ↻ AREA = 15.6 SQ. FT. (1.5 m²) ONLY AREA = 20.8 SQ. FT. (1.9 m²)

* TURN LANES IN EXCESS OF 400' (120 m) IN LENGTH MAY HAVE AN ADDITIONAL SET OF ARROW - "ONLY" INSTALLED MIDWAY BETWEEN THE OTHER TWO SETS OF ARROW - "ONLY".



TYPE OF MARKING	WIDTH OF LINE	PATTERN	COLOR	SPACING / REMARKS
CENTERLINE ON 2 LANE PAVEMENT	4 (100)	SKIP-DASH	YELLOW	10' (3 m) LINE WITH 30' (9 m) SPACE
CENTERLINE ON MULTI-LANE UNDIVIDED PAVEMENT	2 @ 4 (100)	SOLID	YELLOW	11 (280) C-C
NO PASSING ZONE LINES: FOR ONE DIRECTION FOR BOTH DIRECTIONS	4 (100) 2 @ 4 (100)	SOLID SOLID	YELLOW YELLOW	5/2 (140) C-C FROM SKIP-DASH CENTERLINE 11 (280) C-C OMIT SKIP-DASH CENTERLINE BETWEEN
LANE LINES	4 (100) 5 (125) ON FREEWAYS	SKIP-DASH SKIP-DASH	WHITE WHITE	10' (3 m) LINE WITH 30' (9 m) SPACE
DOTTED LINES (EXTENSIONS OF CENTER, LANE OR TURN LANE MARKINGS)	SAME AS LINE BEING EXTENDED	SKIP-DASH	SAME AS LINE BEING EXTENDED	2' (600) LINE WITH 6' (1.8 m) SPACE
EDGE LINES	4 (100)	SOLID	YELLOW-LEFT WHITE-RIGHT	OUTLINE MOUNTABLE MEDIANS IN YELLOW; EDGE LINES ARE NOT USED NEXT TO BARRIER CURB
TURN LANE MARKINGS	6 (150) LINE; FULL SIZE LETTERS & SYMBOLS (8" (21.4m))	SOLID	WHITE	SEE TYPICAL TURN LANE MARKING DETAIL
TWO WAY LEFT TURN MARKING	2 @ 4 (100) EACH DIRECTION	SKIP-DASH AND SOLID	YELLOW	10' (3 m) LINE WITH 30' (9 m) SPACE FOR SKIP-DASH; 5/2 (140) C-C BETWEEN SOLID LINE AND SKIP-DASH LINE
	8' (2.4m) LEFT ARROW	IN PAIRS	WHITE	SEE TYPICAL TWO-WAY LEFT TURN MARKING DETAIL
CROSSWALK LINES (PEDESTRIAN; A. DIAGONALS (BIKE & EQUESTRIAN) B. LONGITUDINAL BARS (SCHOOL))	2 @ 6 (150) 12 (300) @ 45° 12 (300) @ 90°	SOLID SOLID SOLID	WHITE WHITE WHITE	NOT LESS THAN 6' (1.8 m) APART 2' (600) APART SEE TYPICAL CROSSWALK MARKING DETAILS.
STOP LINES	24 (600) ---	SOLID	WHITE	PLACE 4' (1.2 m) IN ADVANCE OF AND PARALLEL TO CROSSWALK, IF PRESENT. OTHERWISE, PLACE AT DESIRED STOPPING POINT, PARALLEL TO CROSSROAD CENTERLINE, WHERE POSSIBLE
PAINTED MEDIANS	2 @ 4 (100) WITH 12 (300) DIAGONALS @ 45° NO DIAGONALS USED FOR 4' (1.2 m) WIDE MEDIANS	SOLID	YELLOW; TWO WAY TRAFFIC WHITE; ONE WAY TRAFFIC	11 (280) C-C FOR THE DOUBLE LINE. SEE TYPICAL PAINTED MEDIAN MARKING.
GORE MARKING AND CHANNELIZING LINES	8 (200) WITH 12 (300) DIAGONALS @ 45°	SOLID	WHITE	DIAGONALS: 15' (4.5 m) C-C (LESS THAN 30MPH (50 km/h)) 20' (6 m) C-C 30MPH (50 km/h) TO 45MPH (70 km/h) 30' (9 m) C-C (OVER 45MPH (70 km/h))
RAILROAD CROSSING	24 (600) TRANSVERSE LINES "RR" IS 6' (1.8 m) LETTERS; 16 (400) LINE FOR "X"	SOLID	WHITE	SEE STATE STANDARD 780001 AREA OF: "X"=3.6 SQ. FT. (0.33 m ²) EACH "X"=54.0 SQ. FT. (5.0 m ²)
SHOULDER DIAGONALS	12 (300) @ 45°	SOLID	WHITE - RIGHT YELLOW - LEFT	50' (15 m) C-C (LESS THAN 30MPH (50 km/h)) 75' (22 m) C-C (30 MPH (50 km/h) TO 45MPH (70 km/h)) 150' (45 m) C-C (OVER 45MPH (70 km/h))

FOR FURTHER DETAILS ON PAVEMENT MARKING REFER TO
STANDARD SPECIFICATIONS FOR ROAD AND BRIDGE
CONSTRUCTION AND STATE STANDARD 780001.

All dimensions are in inches (millimeters) unless otherwise shown.

FILE NAME =	USER NAME = drvakosgn	DESIGNED = EVERS	REVISED = T. RAMMACHER 10-27-94
c:\pw_work\pw\dots\drvakosgn\20100315\to3.dgn		DRAWN =	REVISED = C. JUCIUS 09-09-09
	PLOT SCALE = 50.000' / IN.	CHECKED =	REVISED =
	PLOT DATE = 9/9/2009	DATE = 03-19-90	REVISED =

STATE OF ILLINOIS
DEPARTMENT OF TRANSPORTATION

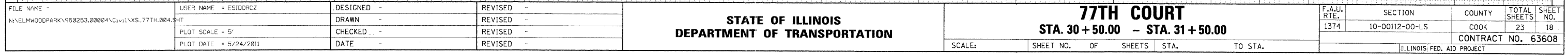
DISTRICT ONE TYPICAL PAVEMENT MARKINGS					F.A. RTE.	SECTION	COUNTY	TOTAL SHEETS	SHEET NO.
					TC-13		CONTRACT NO.		
SCALE: NONE	SHEET NO. 1 OF 1 SHEETS	STA.	TO STA.		FED. ROAD DIST. NO. 1 ILLINOIS FED. AID PROJECT				

FILE NAME =	USER NAME = ESD0RCZ	DESIGNED -	REVISED -
N:\ELMWOODPARK\950253.0004\Civil\DET_950253.04.SHT		DRAWN -	REVISED -
	PLOT SCALE = 28'	CHECKED -	REVISED -
	PLOT DATE = 5/24/2011	DATE -	REVISED -

**STATE OF ILLINOIS
DEPARTMENT OF TRANSPORTATION**

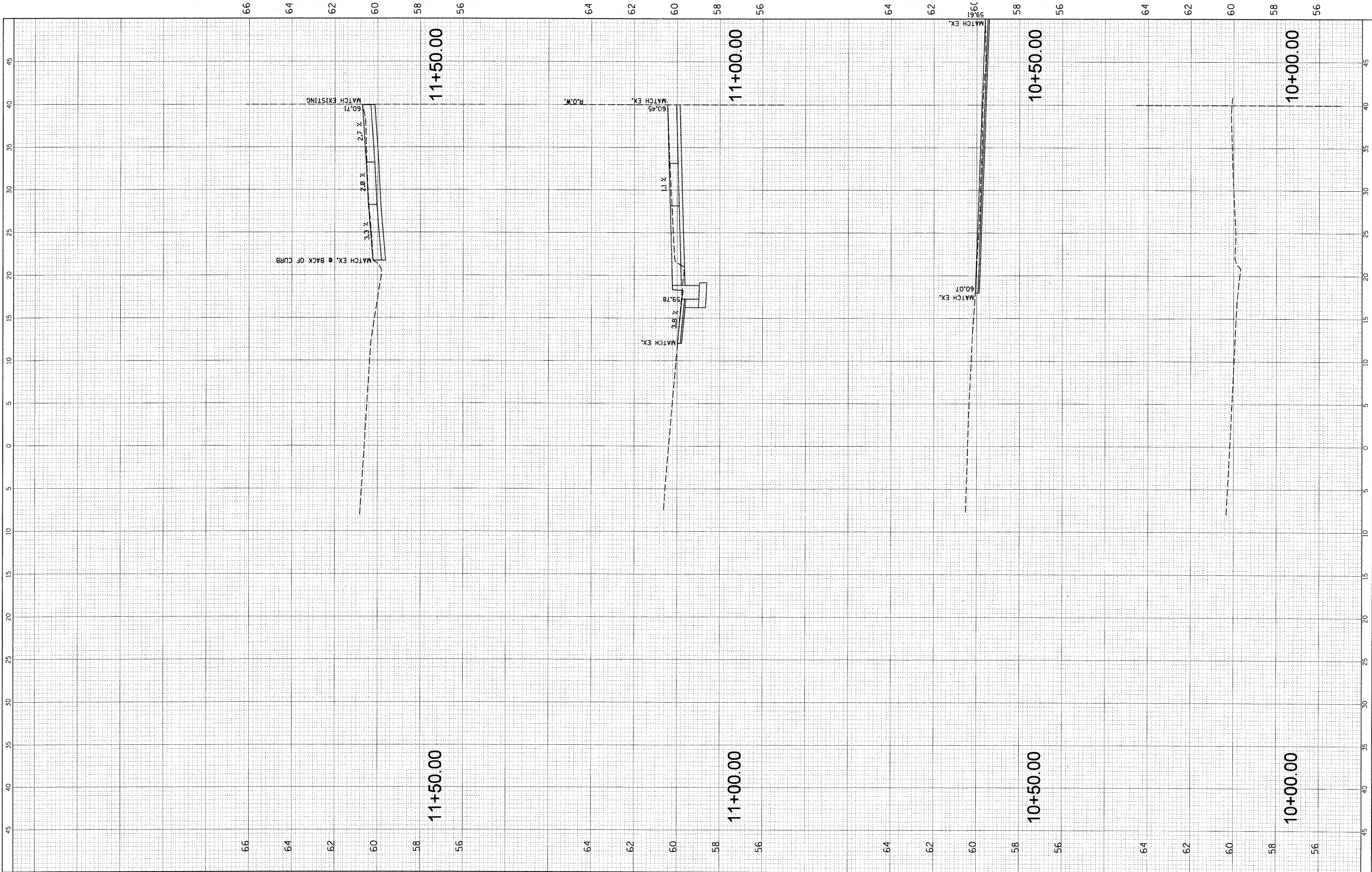
DISTRICT ONE DETAILS					F.A.U. RTE.	SECTION	COUNTY	TOTAL SHEETS	SHEET NO.
					1374	10-00112-00-LS	COOK	23	17
SCALE:	SHEET NO.	OF	SHEETS	STA.	TO STA.				
					CONTRACT NO. 63608				
					ILLINOIS FED. AID PROJECT				

ORIGINAL SURVEY	SURVEYED	BY	DATE
NOTED BOOK	PLOTTED		
	TEMP. AT		
	AREAS		
NO.	AREAS CHECKED		



FINAL SURVEY	SURVEYED	BY	DATE
	PLOTTED		
	NOTE BOOK		
	AREAS		
NO.	CHECKED		

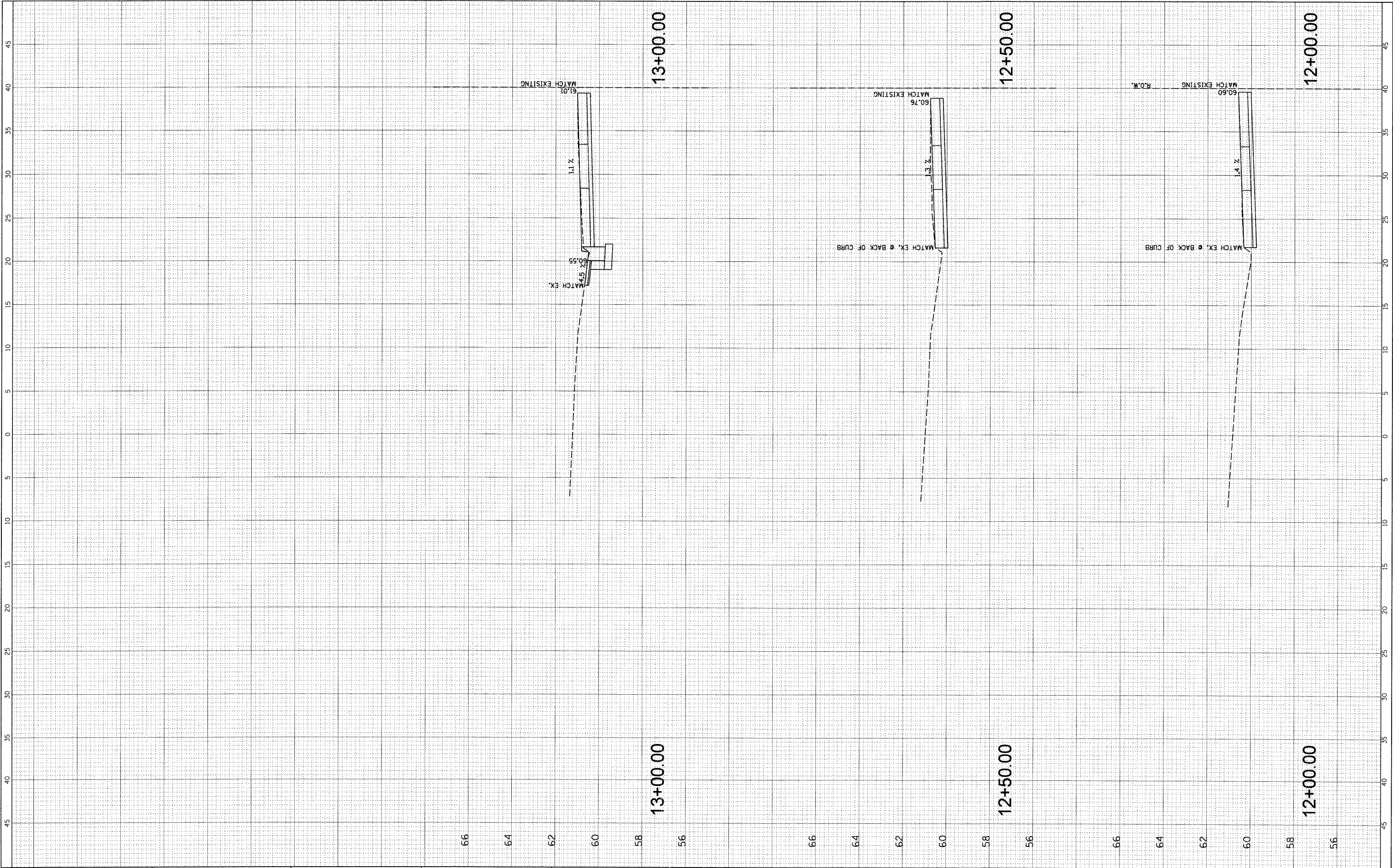
ORIGINAL SURVEY	SURVEYED	BY	DATE
	PLOTTED		
	NOTE BOOK		
	AREAS		
NO.	CHECKED		



FILE NAME = N:\ELMWOODPARK\950253.000\04\CGV11\XS.BELMONT.004.SHT	USER NAME = ESIDORCZ	DESIGNED -	REVISED -									
		DRAWN -	REVISED -									
	PLOT SCALE = 5'	CHECKED -	REVISED -									
	PLOT DATE = 5/24/2011	DATE -	REVISED -									
STATE OF ILLINOIS DEPARTMENT OF TRANSPORTATION				BELMONT AVENUE STA. 10 + 00.00 - STA. 11 + 50.00				F.A.U. RTE. 1374	SECTION 10-00112-00-LS	COUNTY COOK	TOTAL SHEETS 23	SHEET NO. 19
				SCALE: SHEET NO. OF SHEETS STA. TO STA.				CONTRACT NO. 63608 ILLINOIS FED. AID PROJECT				

FINAL SURVEY	SURVEYED	BY	DATE
	PLOTTED		
	NOTE BOOK		
	AREAS CHECKED		

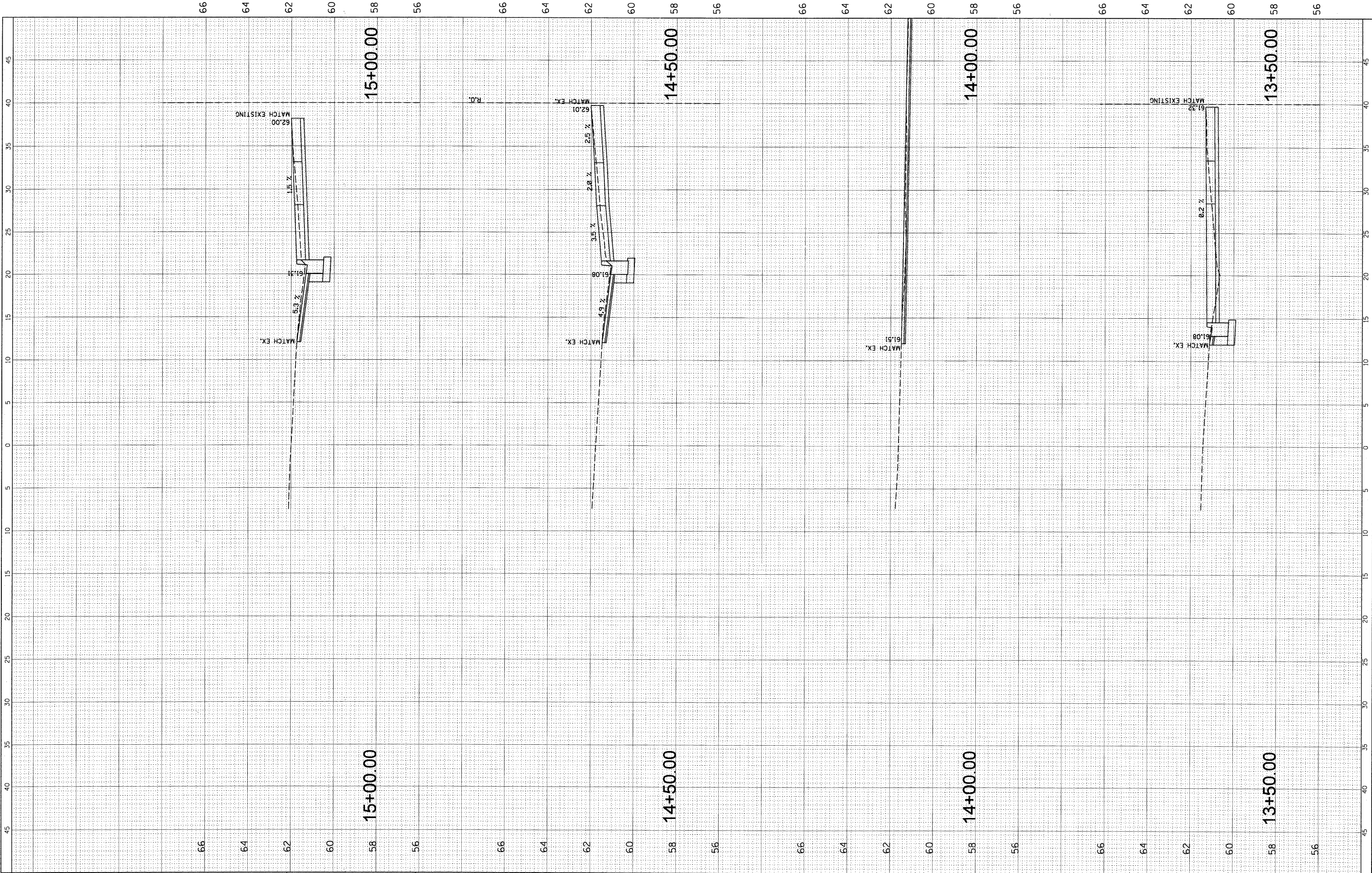
ORIGINAL SURVEY	SURVEYED	BY	DATE
	PLOTTED		
	NOTE BOOK		
	AREAS CHECKED		



FILE NAME =	USER NAME = ESIDORCZ	DESIGNED -	REVISED -	STATE OF ILLINOIS DEPARTMENT OF TRANSPORTATION	BELMONT AVENUE				F.A.U. RTE.	SECTION	COUNTY	TOTAL SHEETS	SHEET NO.
N:\ELMWOODPARK\950253.0000\4\Giv11\XS.BELMONT.024.SHT		DRAWN -	REVISED -		STA. 12+00.00 - STA. 13+00.00				1374	10-00112-00-LS	COOK	23	20
PLOT SCALE = 5'		CHECKED -	REVISED -						CONTRACT NO.				
PLOT DATE = 5/24/2011		DATE -	REVISED -		SCALE: SHEET NO. OF SHEETS STA. TO STA.				ILLINOIS FED. AID PROJECT				

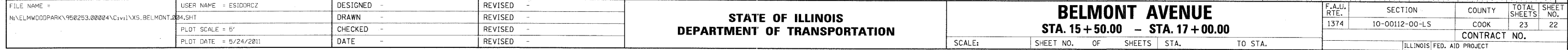
FINAL	SURVEYED	BY	DATE
SURVEY	PLOTTED		
NOTE BOOK	TEMPLATE		
NO.	AREAS	CHECKED	

ORIGINAL	SURVEYED	BY	DATE
SURVEY	PLOTTED		
NOTE BOOK	TEMPLATE		
NO.	AREAS	CHECKED	



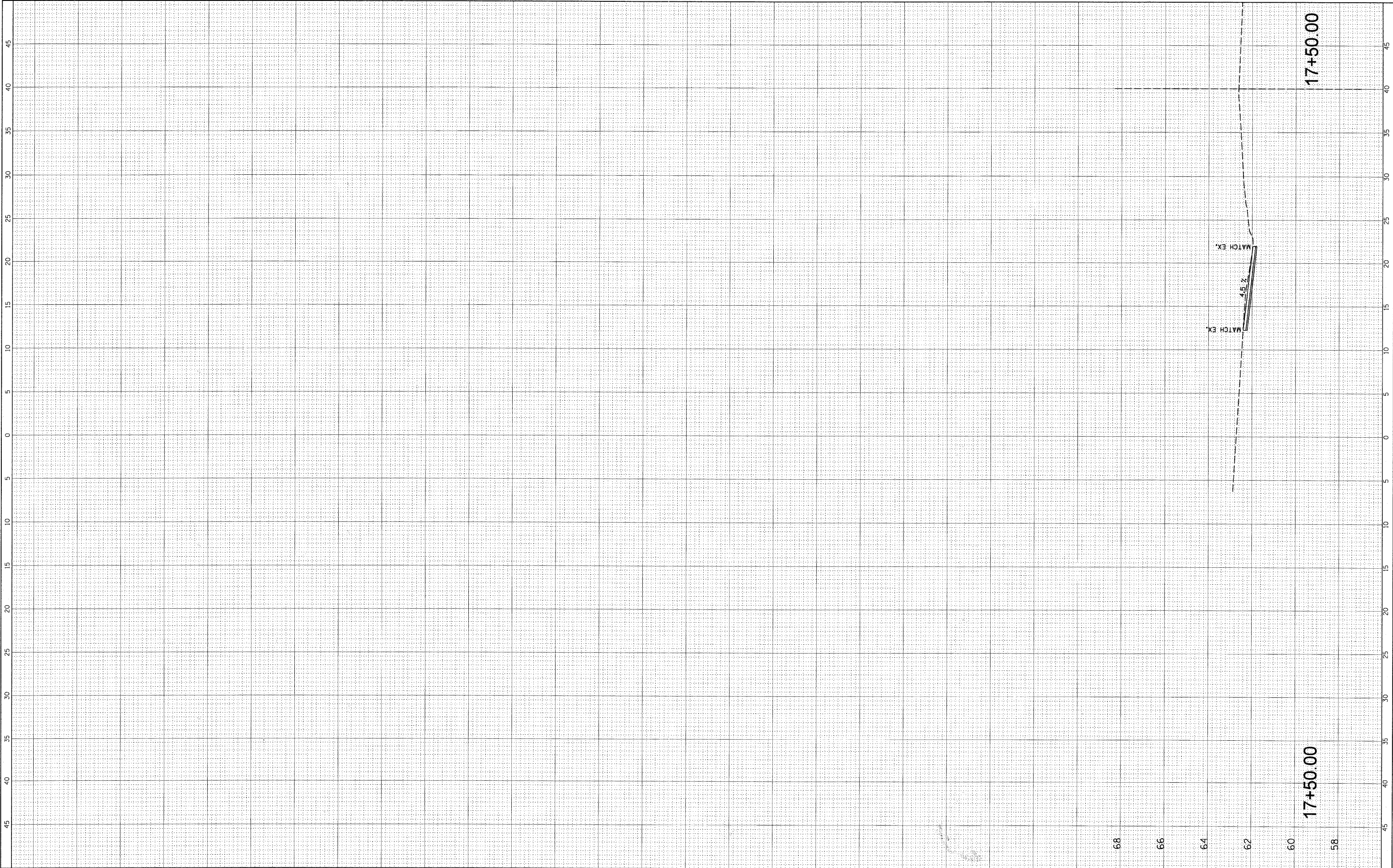
FILE NAME = N:\ELMWOODPARK\960253.000\24\civil\XS.BELMONT.004.SHT	USER NAME = ESIDJRCZ	DESIGNED -	REVISED -	STATE OF ILLINOIS DEPARTMENT OF TRANSPORTATION	BELMONT AVENUE STA. 13 + 50.00 - STA. 15 + 00.00	SCALE: SHEET NO. OF SHEETS STA. TO STA.	F.A.U. RTE.	SECTION	COUNTY	TOTAL SHEETS	SHEET NO.
	PLOT SCALE = 5'	DRAWN -	REVISED -				1374	10-00112-00-LS	COOK	23	21
	PLOT DATE = 5/24/2011	CHECKED -	REVISED -				CONTRACT NO.				
		DATE -	REVISED -				ILLINOIS FED. AID PROJECT				

ORIGINAL SURVEY	SURVEYED _____	BY _____	DATE _____
NOTE BOOK	PLOTTED _____	TEMPLATE _____	
NO.	AREAS _____	AREAS CHECKED _____	



FINAL SURVEY	NO.	SURVEYED	BY	DATE	
					PLOTTED
					TEMPLATE
					AREAS CHECKED

ORIGINAL SURVEY	NO.	SURVEYED	BY	DATE	
					PLOTTED
					TEMPLATE
					AREAS CHECKED



FILE NAME = N:\ELMWOODPARK\950253.000\04\Civil\XS_BELMONT.004.SHT	USER NAME = ESIDORCZ	DESIGNED -	REVISED -	STATE OF ILLINOIS DEPARTMENT OF TRANSPORTATION	BELMONT AVENUE STA. 17 + 50.00 - STA. 17 + 50.00	SCALE: SHEET NO. OF SHEETS STA. TO STA.	F.A.U. RTE.	SECTION	COUNTY	TOTAL SHEETS	SHEET NO.
PLOT SCALE = 5'	CHECKED -	REVISED -	1374				10-00112-00-LS	COOK	23	23	
PLOT DATE = 5/24/2011	DATE -	REVISED -	CONTRACT NO.								
ILLINOIS FED. AID PROJECT											