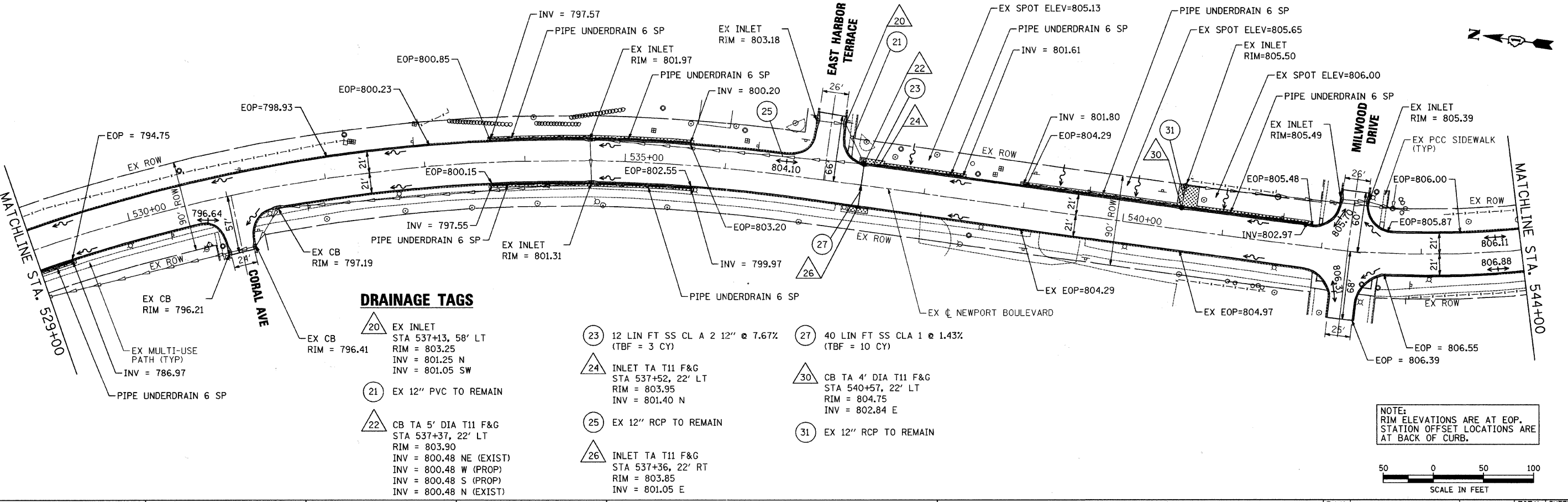


NOTE:
PIPE UNDERDRAIN CONNECTIONS
TO STORM STRUCTURES WILL NOT
BE PAID FOR SEPARATELY, BUT
INCLUDED IN THE COST OF PIPE
UNDERDRAINS 6" (SPECIAL).

DRAINAGE TAGS

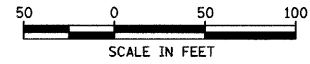
- 10 EX MH TO BE ADJ
STA 519+33, 32' LT
RIM = 788.54
INV = 784.50 NW
INV = 784.50 NE
INV = 784.50 SE
- 11 EX 24" RCP TO REMAIN
- 12 CB TA 4' DIA T8G
STA 521+07, 32' LT
RIM = 788.60
INV = 783.63 NW (CONNECT TO EX)
INV = 783.63 SE (CONNECT TO EX)
- 14 EX MH
STA. 523+01, 32' LT
RIM = 789.31
INV = 782.66 NW
INV = 785.31 SW
INV = 782.66 SE



DRAINAGE TAGS

- 20 EX INLET
STA 537+13, 58' LT
RIM = 803.25
INV = 801.25 N
INV = 801.05 SW
- 21 EX 12" PVC TO REMAIN
- 22 CB TA 5' DIA T11 F&G
STA 537+37, 22' LT
RIM = 803.90
INV = 800.48 NE (EXIST)
INV = 800.48 W (PROP)
INV = 800.48 S (PROP)
INV = 800.48 N (EXIST)
- 23 12 LIN FT SS CL A 2 12" @ 7.67%
(TBF = 3 CY)
- 24 INLET TA T11 F&G
STA 537+52, 22' LT
RIM = 803.95
INV = 801.40 N
- 25 EX 12" RCP TO REMAIN
- 26 INLET TA T11 F&G
STA 537+36, 22' RT
RIM = 803.85
INV = 801.05 E
- 27 40 LIN FT SS CLA 1 @ 1.43%
(TBF = 10 CY)
- 30 CB TA 4' DIA T11 F&G
STA 540+57, 22' LT
RIM = 804.75
INV = 802.84 E
- 31 EX 12" RCP TO REMAIN

NOTE:
RIM ELEVATIONS ARE AT EOP.
STATION OFFSET LOCATIONS ARE
AT BACK OF CURB.



COMPANY NAME: HRGreen.com
PROJECT CONTACT: J. J. Zol
DATE PLOTTED: 5/10/2011 9:46:57 AM
FILE NAME: 86090304-drain-01.dwg
PLOT DRIVER: MCHERRY-1050-p611r-as-is.dvt
PEN TABLE: STANDARD-TRANS.TBL

HRGreen.com
Illinois Professional Design Firm
184-001322

USER NAME = J. J. Zol	DESIGNED - JJS	REVISED -
PLOT SCALE = 1" = 50'	DRAWN - JPA	REVISED -
PLOT DATE = 5/10/2011	CHECKED - AC	REVISED -
	DATE -	REVISED -

VILLAGE OF BARTLETT

**DRAINAGE PLAN
NEWPORT BOULEVARD**

SCALE: 1" = 50' SHEET NO. 1 OF 3 SHEETS STA. 514+55 TO STA. 544+00

F.A.U. RTE. 3805	SECTION 11-00088-00	COUNTY DUPAGE	TOTAL SHEETS 24	SHEET NO. 8
CONTRACT NO. 63604				ILLINOIS FED. AID PROJECT