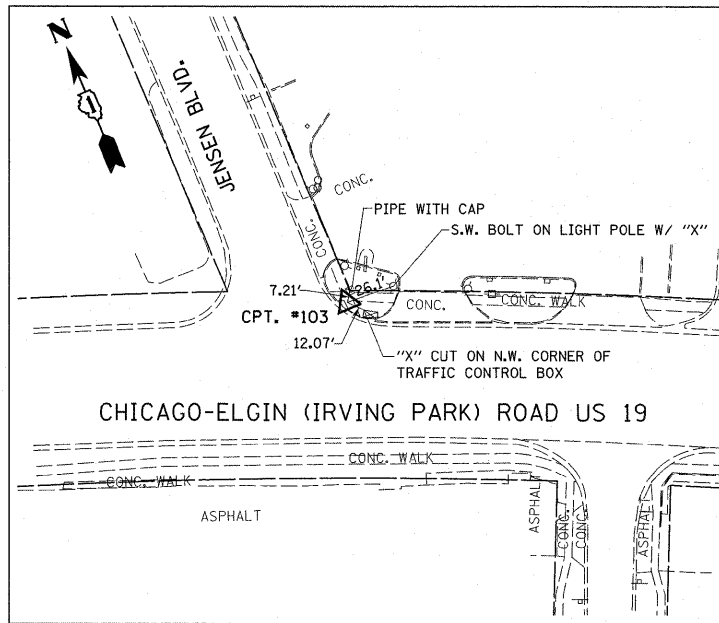
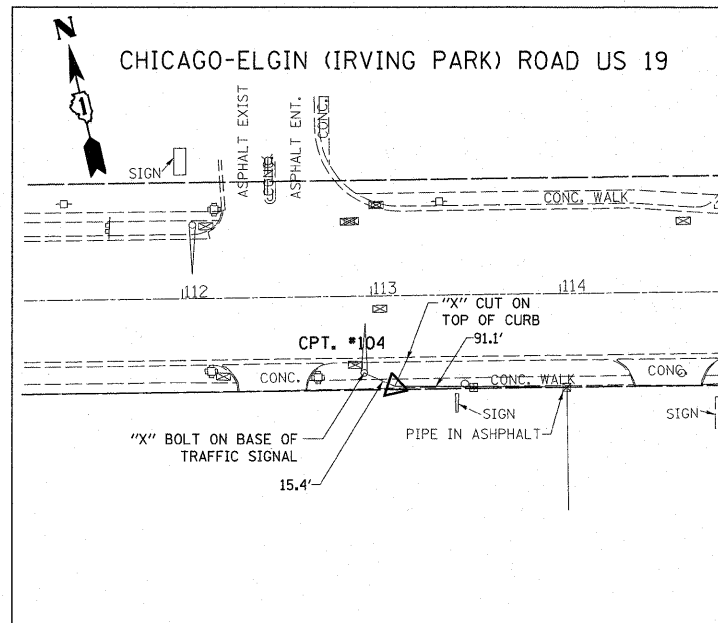


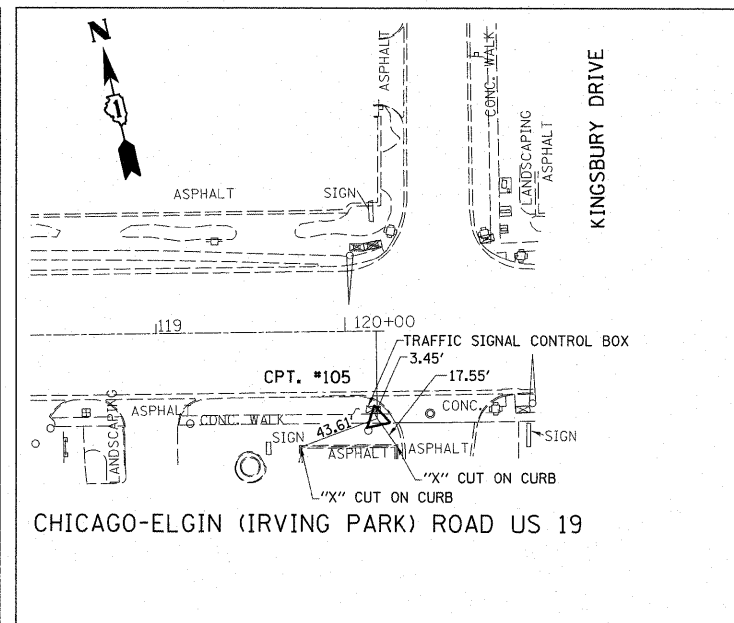
CONTROL POINT #102
 CUT CROSS ON MEDIAN
 STATION 102+20.03, 2.55' LT.
 NORTH: 1,944,828.3329
 EAST: 1,035,098.3110
 ELEV=811.382



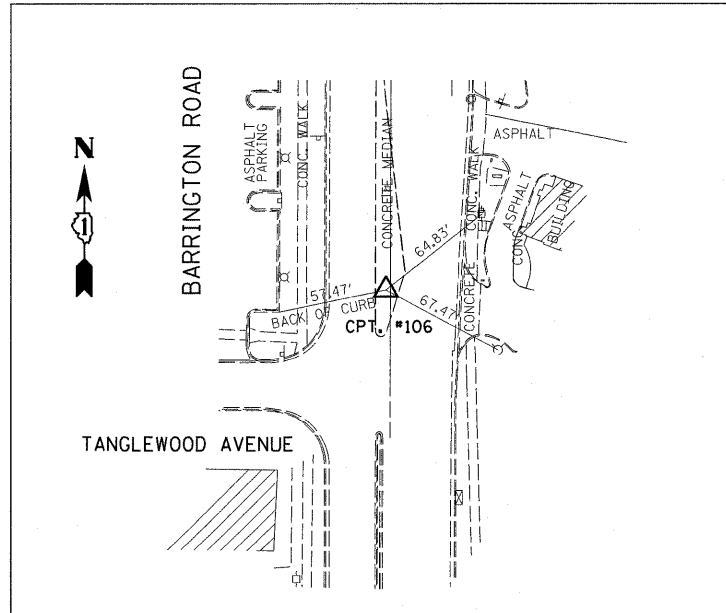
CONTROL POINT #103
 CUT CROSS ON WALK
 NORTH: 1,945,185.2048
 EAST: 1,034,502.4588
 ELEV=816.923



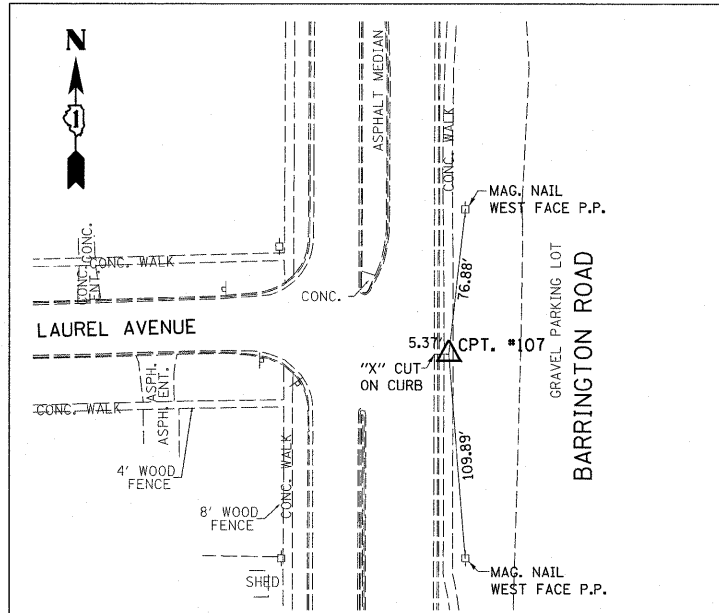
CONTROL POINT #104
 CUT CROSS ON WALK
 STATION 113+34.41, 48.24' RT.
 NORTH: 1,944,407.1394
 EAST: 1,036,105.3899
 ELEV=809.626



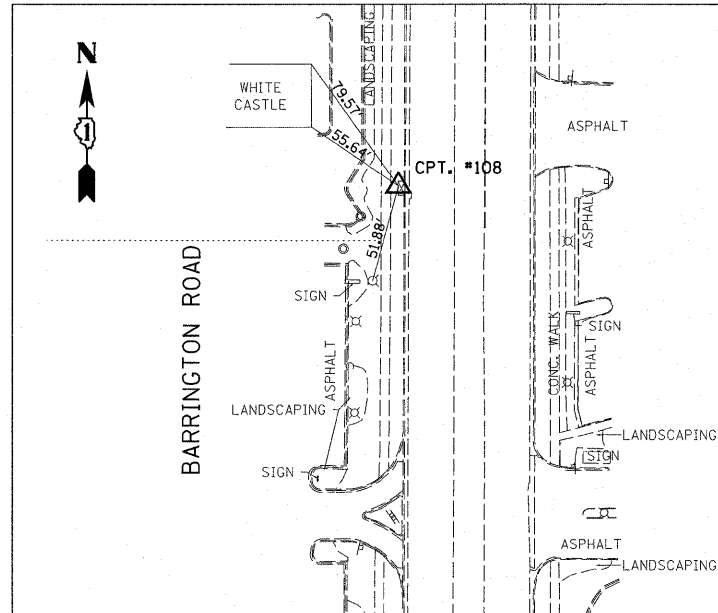
CONTROL POINT #105
 CUT CROSS ON WALK
 STATION 120+16.67, 46.75' RT.
 NORTH: 1,944,268.8709
 EAST: 1,036,796.3617
 ELEV=800.022



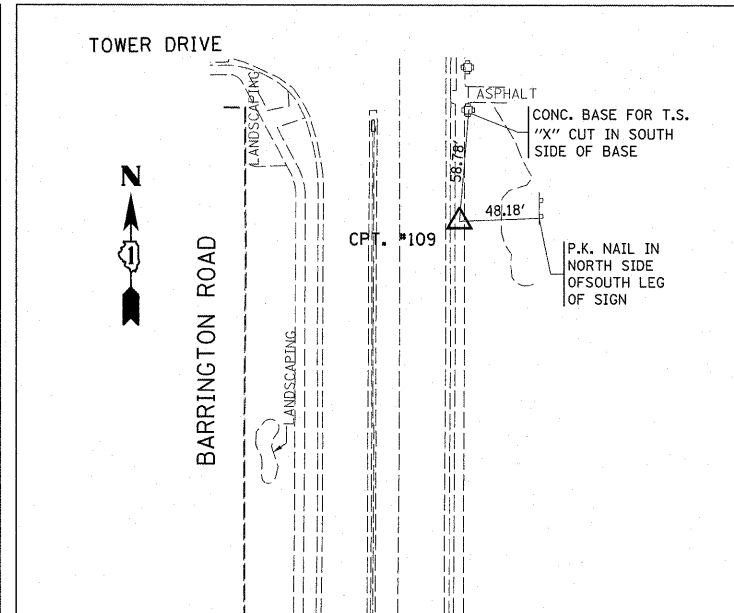
CONTROL POINT #106
 CUT CROSS ON MEDIAN
 STA. 20+50.14, 2.39 LT.
 NORTH: 1,944,246.0881
 EAST: 1,035,512.7249
 ELEV=810.676



CONTROL POINT #107
 CUT CROSS ON WALK
 NORTH: 1,943,649.9923
 EAST: 1,035,553.5145
 ELEV=811.255



CONTROL POINT #108
 CUT CROSS ON HANDHOLE
 NORTH: 1,945,261.9291
 EAST: 1,035,479.4265
 ELEV=797.575



CONTROL POINT #109
 CUT CROSS ON WALK
 NORTH: 1,945,970.3512
 EAST: 1,035,558.5810
 ELEV=798.960

FILE NAME =	USER NAME = midjja	DESIGNED -	REVISED -	STATE OF ILLINOIS DEPARTMENT OF TRANSPORTATION	IL. RTE. 19 (IRVING PARK RD.) AT BARRINGTON RD. ALIGNMENT, TIES & BENCHMARKS			F.A.U. RTE.	SECTION	COUNTY	TOTAL SHEETS	SHEET NO.
cs:\pwwork\pwwork\midjja\d0156246\VP141808\sh-ATB.dgn	DRAWN -	REVISED -	REVISED -		1321	2010-048-N	COOK	53	10			
PLOT SCALE = 1/8"=1'-0" / IN.	CHECKED -	REVISED -	REVISED -		CONTRACT NO. 60L23							
PLOT DATE = 5/12/2011	DATE -	REVISED -	REVISED -		ILLINOIS FED. AID PROJECT							