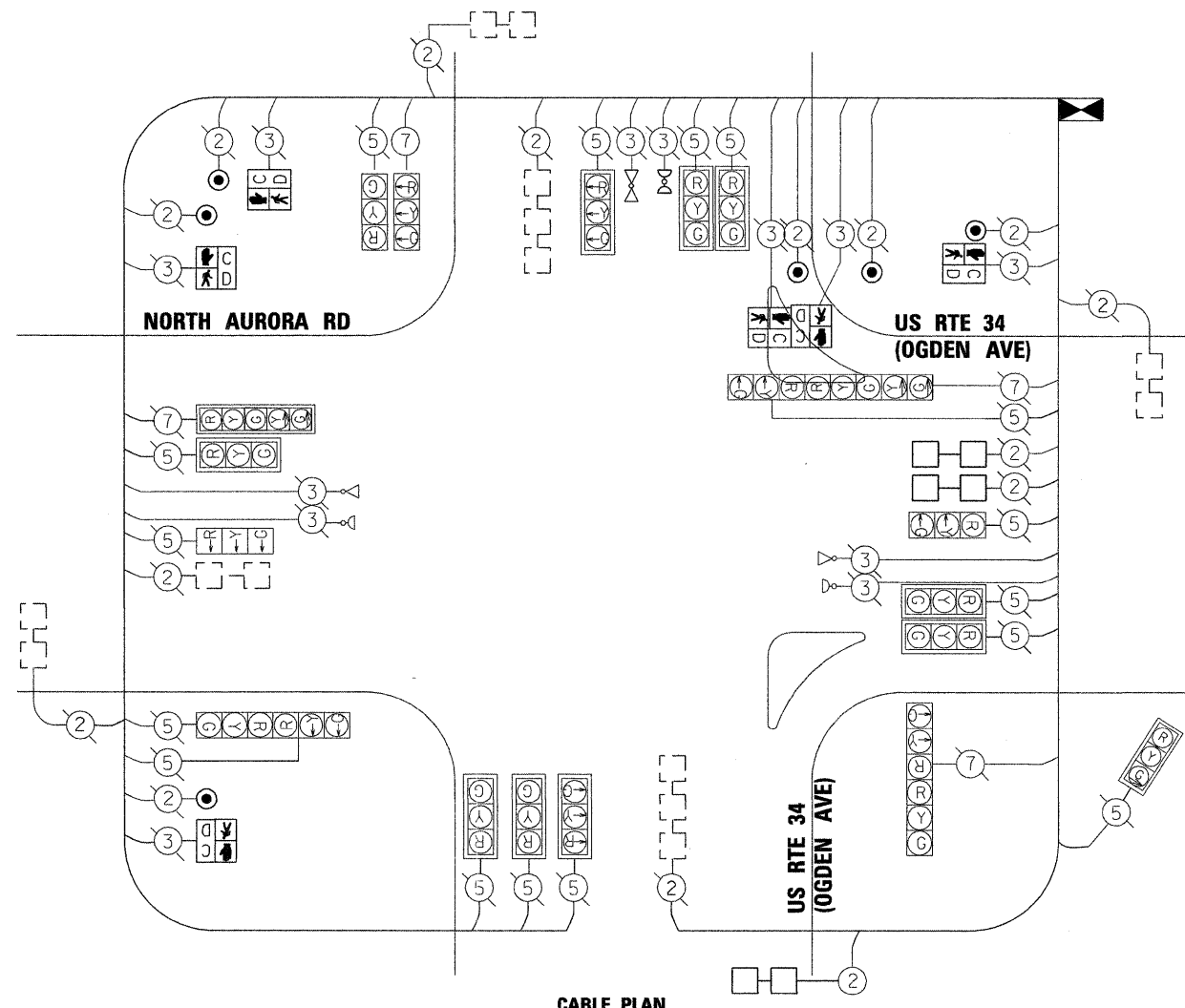


SCHEDULE OF QUANTITIES

ITEM	UNIT	QUANTITY
CONDUIT IN TRENCH, 2" DIA., GALVANIZED STEEL	FOOT	240
HANDHOLE	EACH	1
REBUILD EXISTING HANDHOLE	EACH	1
TRENCH AND BACKFILL FOR ELECTRICAL WORK	FOOT	240
ELECTRIC CABLE IN CONDUIT, SIGNAL, NO. 14 2C	FOOT	475
PEDESTRIAN SIGNAL HEAD, LED, 1-FACE, BRACKET MOUNTED WITH COUNTDOWN TIMER	EACH	4
PEDESTRIAN SIGNAL HEAD, LED, 2-FACE, BRACKET MOUNTED WITH COUNTDOWN TIMER	EACH	1
DETECTOR LOOP REPLACEMENT	FOOT	90
PEDESTRIAN PUSH-BUTTON	EACH	6
REMOVE EXISTING HANDHOLE	EACH	1



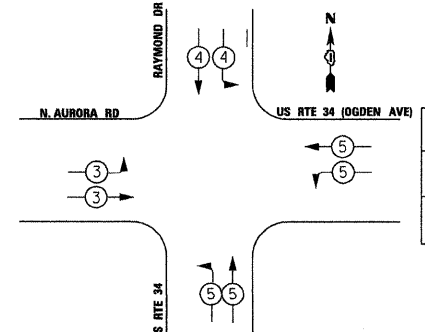
CABLE PLAN

CABLE PLAN LEGEND

EXISTING	PROPOSED	DESCRIPTION
		8" (200mm) TRAFFIC SIGNAL SECTION
		12" (300mm) TRAFFIC SIGNAL SECTION
		12" (300mm) PEDESTRIAN SIGNAL SECTION
		PEDESTRIAN SIGNAL HEAD, INTERNATIONAL SYMBOL, WITH COUNTDOWN TIMER
		CONTROLLER CABINET
		SERVICE INSTALLATION
		VEHICLE DETECTOR, INDUCTION LOOP
		MAGNETIC DETECTOR
		EMERGENCY VEHICLE LIGHT DETECTOR
		CONFIRMATION BEACON
		PUSHBUTTON DETECTOR
		2 DENOTES NUMBER OF CONDUCTORS. ALL CABLE NO. 14 EXCEPT AS INDICATED. ALL LOOP DETECTOR CABLE TO BE SHIELDED.
		SIGNAL FACE WITH BACKPLATE "P" INDICATES PROGRAMMED HEAD.
		RAILROAD CONTROL CABINET
		ILLUMINATED SIGN, FIBER OPTIC "NO LEFT TURN"
		ILLUMINATED SIGN, FIBER OPTIC "NO RIGHT TURN"
		GROUND ROD AT HANDHOLE, DOUBLE HANDHOLE, OR CONTROLLER
		GROUND ROD AT POST OR MAST ARM POLE
		GROUND ROD AT ELECTRIC SERVICE INSTALLATION
		GROUND CABLE IN CONDUIT NO. 6 SOLID COPPER (GREEN)
		FIBER OPTIC CABLE IN CONDUIT NO. 62.5/125 2-MM12F & SM12F
		UNINTERRUPTIBLE POWER SUPPLY (UPS)
		PERFORMED LOOP DETECTION



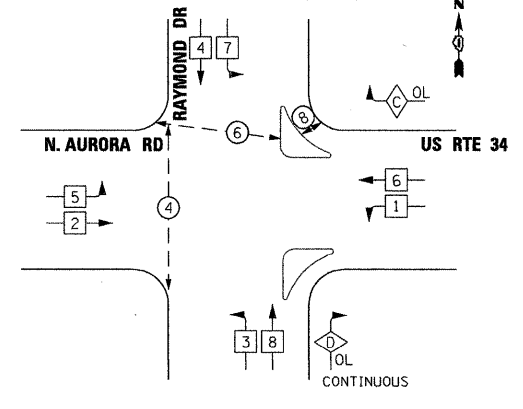
EMERGENCY VEHICLE PREEMPTION SEQUENCE



PROPOSED EMERGENCY VEHICLE PREEMPTORS

EMERGENCY VEHICLE PREEMPTOR	3	4	5	6
MOVEMENT				

PROPOSED CONTROLLER SEQUENCE



PHASE DESIGNATION DIAGRAM

LEGEND

	SINGLE ENTRY PHASE
	DUAL ENTRY PHASE
	OVERLAP
	PEDESTRIAN PHASE
NUMBER REFERS TO ASSOCIATED PHASE	
OVERLAP LETTER	PERMISSIVE PHASE + PROTECTED PHASE
C	= 6 + 7
D	= NONE + ALL PHASE

I.D.O.T TRAFFIC SIGNAL INSTALLATION ELECTRICAL SERVICE REQUIREMENTS

TYPE	NO. OF LAMPS	WATTAGE	OPERATION	TOTAL WATTAGE
SIGNAL (RED)		135	17	0.50
(YELLOW)		135	25	0.25
(GREEN)		135	15	0.25
ARROW		135	12	0.10
PED. SIGNAL	6	90	25	1.00
CONTROLLER		100	100	1.00
ILLUM. SIGN		84		0.05
HOT RIGHT		135	12	1.00
VIDEO VEH. SENSOR		15	15	1.00
FLASHER				0.50
TOTAL				150

ILLINOIS DEPARTMENT OF TRANSPORTATION
DIVISION OF HIGHWAY/DISTRICT 1
201 CENTER CT/SCHAUMBURG, IL 60196-1096

ENERGY SUPPLY - CONTACT: _____
PHONE: 630-691-4379
COMPANY: COMMONWEALTH EDISON

FOUNDATION (DEPTH)	(FEET) (m)	CABLE SLACK	(FEET) (m)	VERTICAL	(FEET) (m)
TYPE A - POST	4, (1.2)	HANDHOLE	6.5, (2.0)	ALL FOUNDATION	1.0, (2.0)
D - CONTROLLER	4, (1.2)	DOUBLE HANDHOLE	13, (4.0)	MAST ARM (1.) POLE	20'+L-2 = (6m+L-0.6m)+
E - M. ARM POLE	()	SIGNAL POST	2, (0.6)	BRACKET MOUNTED	13, (4.0)
		CONTROLLER CAB.	1, (0.3)	PED. PUSHBUTTON	4, (1.2)
		24" (600mm)	10, (3.0)	ELECTRIC SERVICE	13.5, (4.1)
		30" (600mm)	15, (4.5)	SERVICE TO GROUND	13, (4.1)
		36"	15, (4.5)	POST MOUNTED	6, (1.8)
		42"	15, (4.5)		

STATE OF ILLINOIS DEPARTMENT OF TRANSPORTATION

US ROUTE 34 AT NORTH AURORA ROAD /RAYMOND DRIVE

SCHEDULE OF QUANTITIES, CABLE PLAN, PHASE DESIGNATION DIAGRAM, AND EMERGENCY VEHICLE PREEMPTION SEQUENCE

F.A.P. RTE.	SECTION	COUNTY	TOTAL SHEETS	SHEET NO.
311	652X-N-3	DUPAGE	34	21

CONTRACT NO. 60L22

FILE NAME: P:\2009\ME\0006_Ver-Vor_Plan\CADD\W022_US34\Shets\0160L22-SHT-TS02.dgn
PLOT SCALE: 20/0000 / IN.
USER NAME: Millennium Professional Services

MILLENNIA PROFESSIONAL SERVICES
200 22ND Street, Suite 216, Lombard, IL 60148
630.785.0110 voice, 630.839.2566 fax
www.mps-ill.com

DESIGNED - CJD	REVISED -
DRAWN - CJD	REVISED -
CHECKED - TVN	REVISED -
DATE - 5/31/2011	REVISED -

SCALE: N/A SHEET NO. 1 OF 1 SHEETS STA. TO STA.

FED. ROAD DIST. NO. 1 ILLINOIS FED. AID PROJECT
P:\2009\ME\0006_Ver-Vor_Plan\CADD\W022_US34\Shets\0160L22-SHT-TS02.dgn