

STATE OF ILLINOIS
DEPARTMENT OF TRANSPORTATION
DIVISION OF HIGHWAYS
PROPOSED
HIGHWAY PLANS

F.A.P. 311: US ROUTE 34
AT NORTH AURORA ROAD/RAYMOND DRIVE
SECTION: 652X-N-3
LOCATION OF PROJECT
PROJECT: HSIP-0311(045)
DU PAGE COUNTY
C-91-658-10

F.A.P. RTE.	SECTION	COUNTY	TOTAL SHEETS	SHEET NO.
311	652X-N-3	DUPAGE	34	1
FED. ROAD DIST. NO. 1		ILLINOIS	CONTRACT NO. 60L22	

D-91-658-10

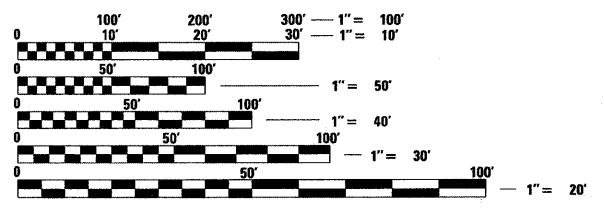


FOR INDEX OF SHEETS, SEE SHEET NO. 2

DESIGN DESIGNATION
US ROUTE 34 (OGDEN AVE)
FUNCTION CLASSIFICATION: MAJOR ARTERIAL
DESIGN SPEED=45 MPH
POSTED SPEED=40 MPH
NORTH AURORA ROAD
FUNCTIONAL CLASSIFICATION=MINOR ARTERIAL
DESIGN SPEED=45 MPH
POSTED SPEED=40 MPH
RAYMOND DR
FUNCTIONAL CLASSIFICATION=MAJOR ARTERIAL
DESIGN SPEED=45 MPH
POSTED SPEED=40 MPH

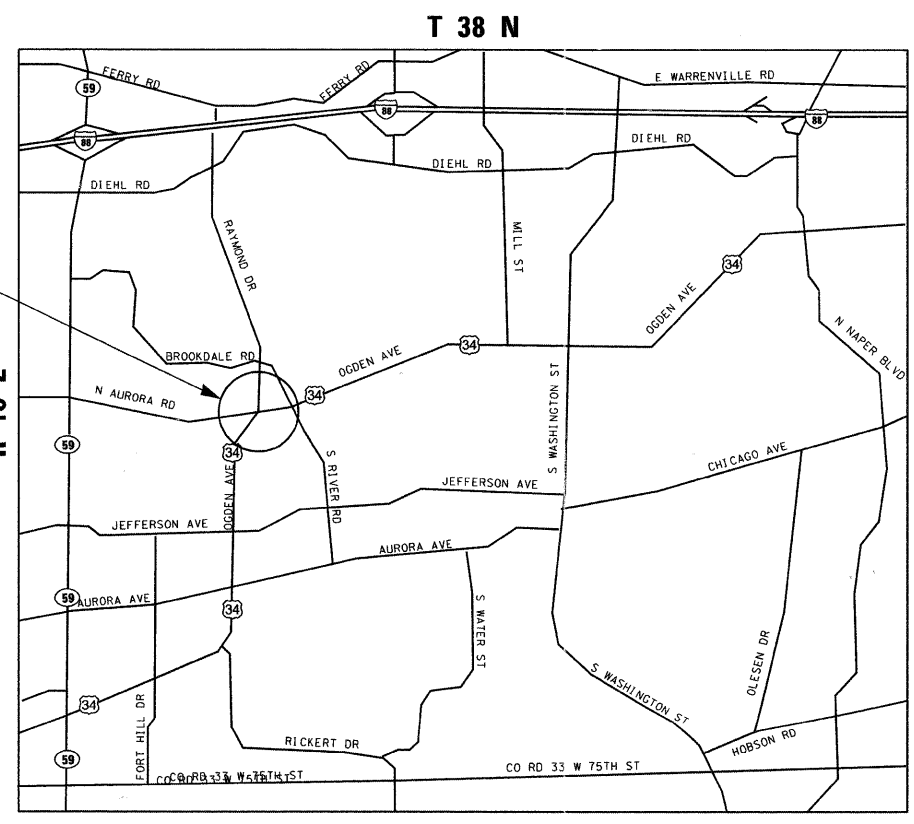
TRAFFIC DATA
US 34 (OGDEN AVE)
2009 ADT=37,000
N. AURORA RD
2009 ADT=17,300
RAYMOND DR
2009 ADT=26,200

PROJECT LOCATED WITHIN THE CITY OF NAPERVILLE



FULL SIZE PLANS HAVE BEEN PREPARED USING STANDARD ENGINEERING SCALES. REDUCED SIZED PLANS WILL NOT CONFORM TO STANDARD SCALES. IN MAKING MEASUREMENTS ON REDUCED PLANS, THE ABOVE SCALES MAY BE USED.

J.U.L.I.E.
JOINT UTILITY LOCATION INFORMATION FOR EXCAVATION
1-800-892-0123 OR 811



SCALE: NTS
NAPERVILLE TOWNSHIP

GROSS & NET LENGTH OF PROJECT = 1650 FT = 0.31 MILES



DISTRICT ONE - PLAN PREP ENGINEER: KEN ENG (847) 705-4247

CONTRACT NO. 60L22

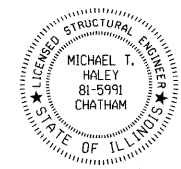
MILLENNIA PROFESSIONAL SERVICES
 THOMAS V. NGO, P.E.
 # 062-058379

Thomas V. Ngo
 DATE: 05/27/2011
 SIGNATURE AND SEAL APPLIES TO DRWG NO 1-18 AND 21



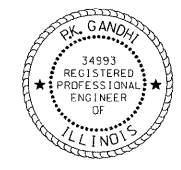
LIN ENGINEERING, LTD.
 MICHAEL T. HALEY, S.E.
 # 81-5991

Michael T. Haley
 DATE: 05/27/2011
 SIGNATURE AND SEAL APPLIES TO DRWG NO 19 TO 20



GANDHI AND ASSOCIATES INC.
 P.K. GANDHI, P.E.
 # 062-034993

P.K. Gandhi
 DATE: 05/27/2011
 SIGNATURE AND SEAL APPLIES TO DRWG NO 22 TO 22



STATE OF ILLINOIS
DEPARTMENT OF TRANSPORTATION
DIVISION OF HIGHWAYS

SUBMITTED May 31 20 11
Diane O'Keefe
 DEPUTY DIRECTOR OF HIGHWAYS, REGION ENGINEER

July 1 20 11
Scott E. Stitt
 acting ENGINEER OF DESIGN AND ENVIRONMENT

July 1 20 11
Christine M. Reeder
 DIRECTOR OF HIGHWAYS, CHIEF ENGINEER

200 22ND Street, Suite 216, Lombard, IL 60148
 630.705.0110 voice, 630.839.2566 fax
 www.mps-il.com

MILLENNIA PROFESSIONAL SERVICES

PRINTED BY THE AUTHORITY
OF THE STATE OF ILLINOIS