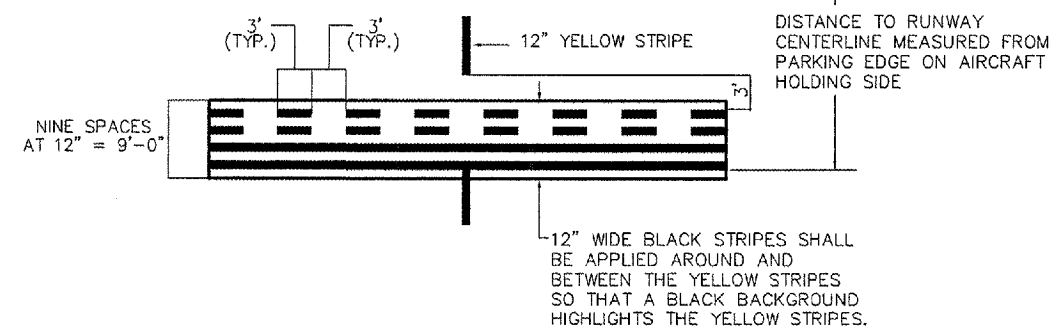
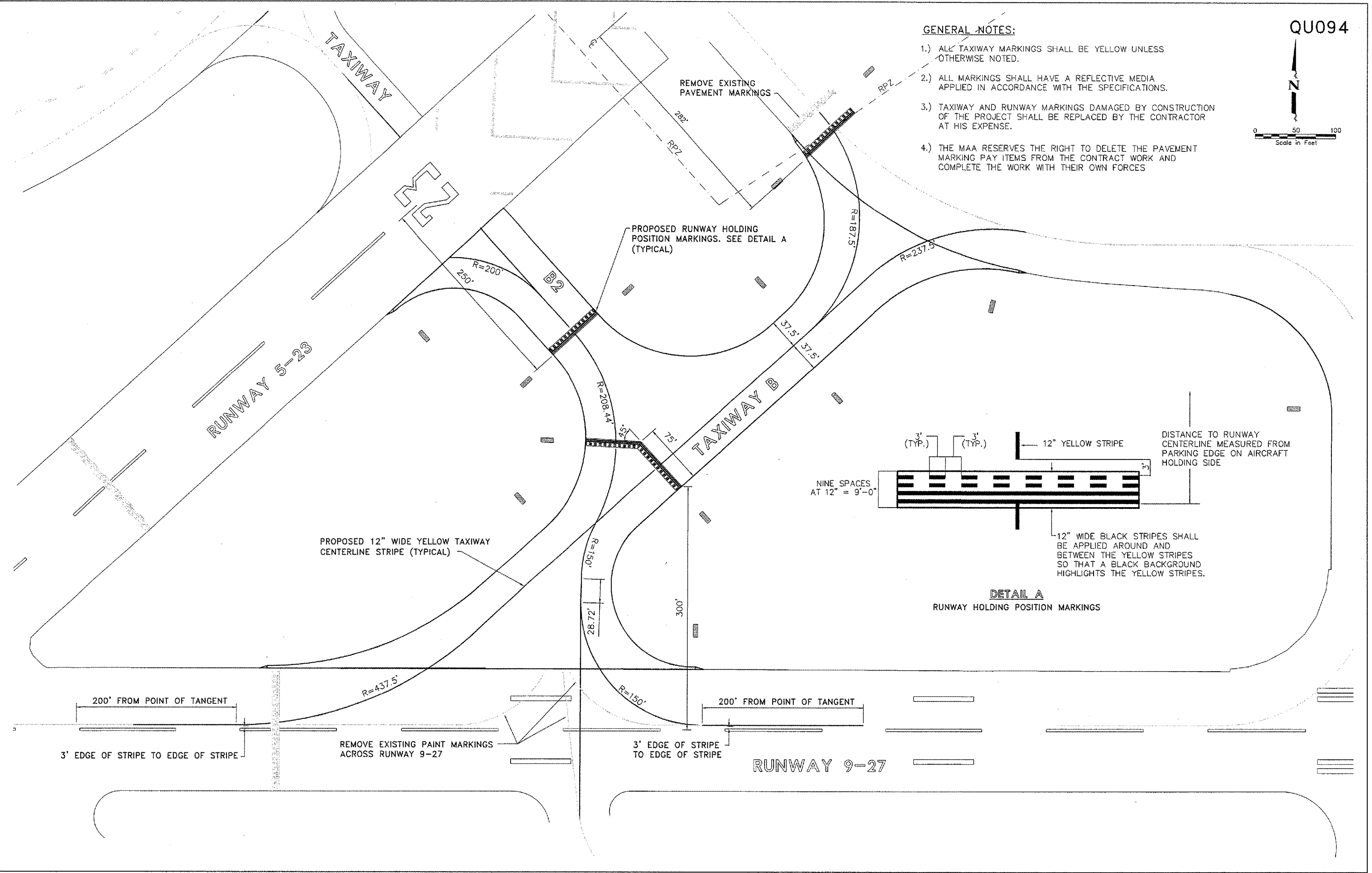


GENERAL NOTES:

- 1.) ALL TAXIWAY MARKINGS SHALL BE YELLOW UNLESS OTHERWISE NOTED.
- 2.) ALL MARKINGS SHALL HAVE A REFLECTIVE MEDIA APPLIED IN ACCORDANCE WITH THE SPECIFICATIONS.
- 3.) TAXIWAY AND RUNWAY MARKINGS DAMAGED BY CONSTRUCTION OF THE PROJECT SHALL BE REPLACED BY THE CONTRACTOR AT HIS EXPENSE.
- 4.) THE MAA RESERVES THE RIGHT TO DELETE THE PAVEMENT MARKING PAY ITEMS FROM THE CONTRACT WORK AND COMPLETE THE WORK WITH THEIR OWN FORCES



DETAIL A
RUNWAY HOLDING POSITION MARKINGS



REVISIONS		
NO.	ITEM	DATE

PLOTTING SCALE: 1:50
DRAWN BY: MJK
CHECKED BY:
DATE: MAY 2005

McCLURE ENGINEERING ASSOCIATES, INC.
4700 Kennedy Drive East Moline, Illinois 61214
(309) 792-9360 FAX (309) 792-8874
Design Firm License: Illinois #184-000816
Copyright 2005 by McClure Engineering Associates, Inc.